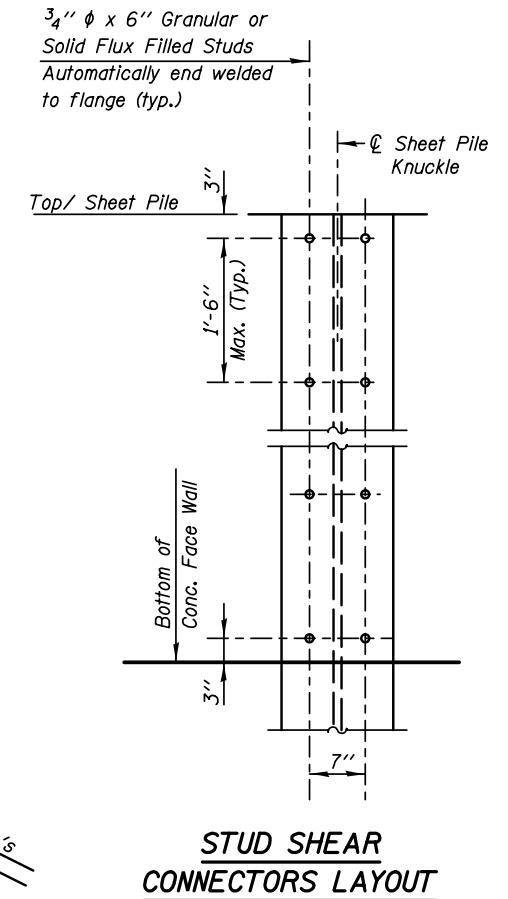
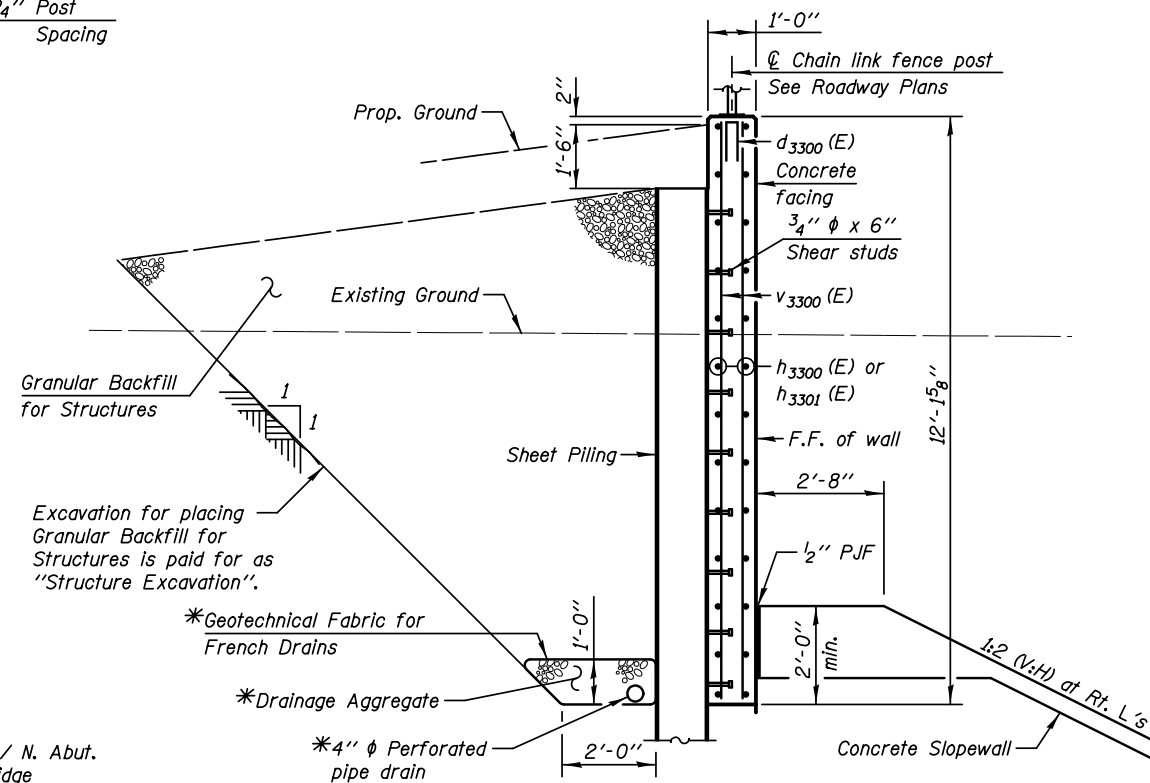


DESIGN CRITERIA

Required Section Modulus = 28.6 in³/ft
Minimum Tip Elevation = 698.00

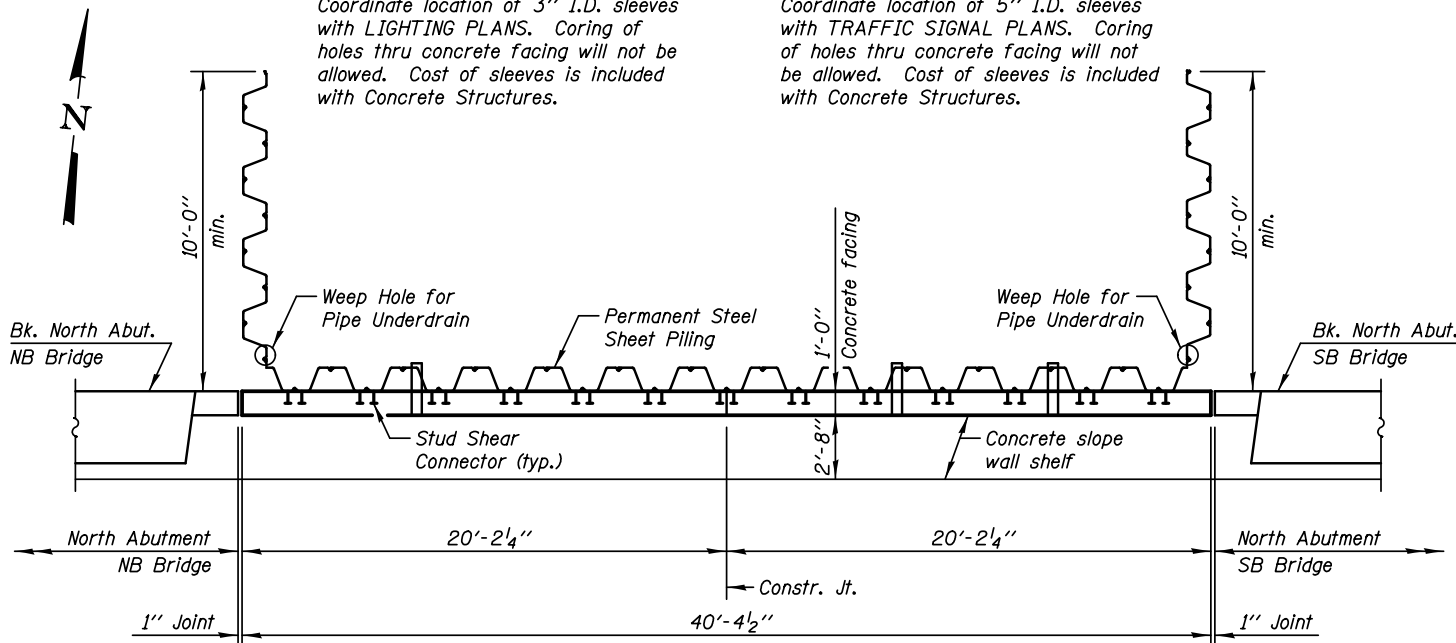


NOTE B

Coordinate location of 3" I.D. sleeves with LIGHTING PLANS. Coring of holes thru concrete facing will not be allowed. Cost of sleeves is included with Concrete Structures.

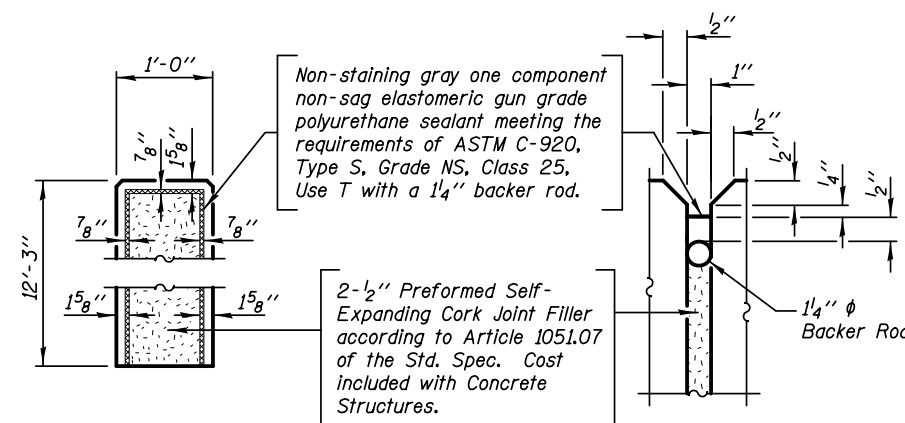
NOTE A

Coordinate location of 5" I.D. sleeves with TRAFFIC SIGNAL PLANS. Coring of holes thru concrete facing will not be allowed. Cost of sleeves is included with Concrete Structures.

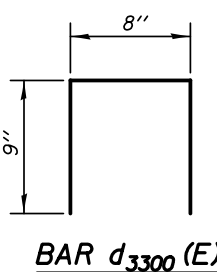
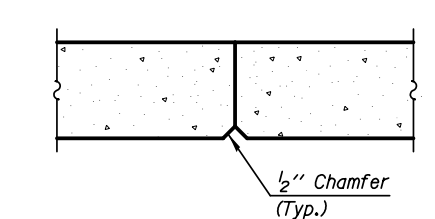


SECTION THRU SHEET PILING WALL

*Included in the cost of Pipe Underdrains for Structures.



1" JOINT DETAILS



BILL OF MATERIAL

BAR	NO.	SIZE	LENGTH	SHAPE		
d3300(E)	8	#4	2'-2"	┌		
h3300(E)	52	#5	19'-10"	—		
h3301(E)	26	#5	6'-0"	—		
v3300(E)	84	#5	11'-9"	—		
Structure Excavation					Cu. Yd.	91.0
Concrete Structures					Cu. Yd.	20.0
Stud Shear Connectors					Each	234
Reinforcement Bars, Epoxy Coated					Pound	2280
Permanent Steel Sheet Piling					Sq. Ft.	2183.0
Granular Backfill for Structures					Cu. Yd.	112.0
Pipe Underdrains for Structures 4"					Foot	40.0

NOTES

See Sheet SA-45, SA-47 and SA-48 for North Abutment Details.

MIN. BAR LAP

#5 - 2'-5"

TOLLWAY WALL EW123.3R,WB

KNIGHT
Engineers & Architects

DESIGNED - WPM	REVISION
CHECKED - TB	REVISION
SCALE - NONE	REVISION
DATE - 10/15/2012	REVISION
DRAWN - TB	REVISION
CHECKED - WPM	REVISION

STATE OF ILLINOIS
DEPARTMENT OF TRANSPORTATION

RETAINING WALL - NORTH ABUTMENT
S.N. 022-2029 (SB) TOLLWAY B.N. 826
S.N. 022-2030 (NB) TOLLWAY B.N. 825
SHEET NO. SA-50 OF 63 SHEETS

F.A.P. RTE.	SECTION	COUNTY	TOTAL SHEETS	SHEET NO.
338	(112 & 113) WRS-5	DUPAGE	963	634
CONTRACT NO. 60131				
ILLINOIS FED. AID PROJECT				