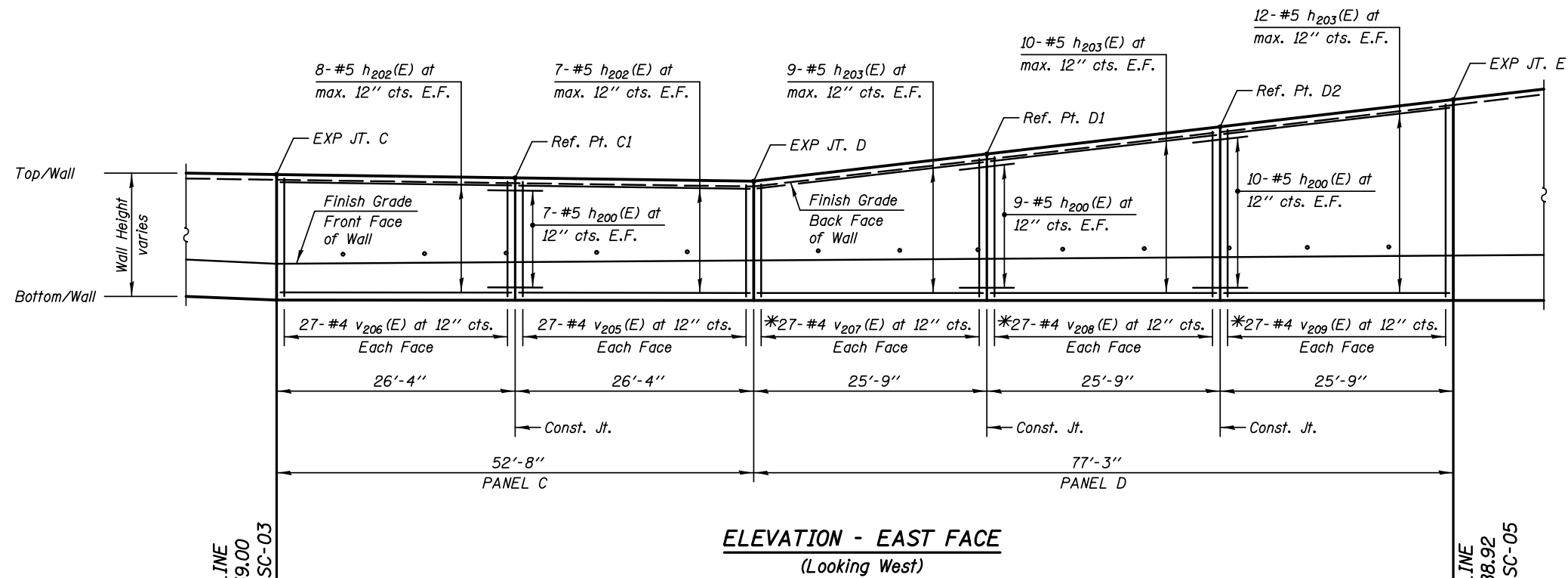


Note:
For Top/Wall Elevations, Bottom/Wall Elevations & Wall Height SEE TABLE.



PILE DATA:

Pile No.	Top Elev.	Bottom Elev.	Length Ft.	No of Studs
PC-1	704.68	680.68	24.00	10
PC-2	704.62	680.62	24.00	10
PC-3	704.55	680.55	24.00	10
PC-4	704.49	680.49	24.00	10
PC-5	704.42	681.42	23.00	10
PC-6	704.35	681.35	23.00	10
PD-1	704.48	681.48	23.00	10
PD-2	705.01	681.01	24.00	10
PD-3	705.53	680.53	25.00	10
PD-4	706.06	680.06	26.00	12
PD-5	706.58	679.58	27.00	12
PD-6	707.10	679.10	28.00	12
PD-7	707.63	677.63	30.00	14
PD-8	708.15	677.15	31.00	14
PD-9	708.68	675.68	33.00	14

SHAFT SIZES

Pile Size	Shaft Excavation Size
HP14	2'-6"
W24	3'-0"

Notes

All Dimensions are along Front Face of Wall.

For Typical Sections & Bill of Material, SEE Sheet SC-06

*See Bar Cutting Diagram Sheet SC-06

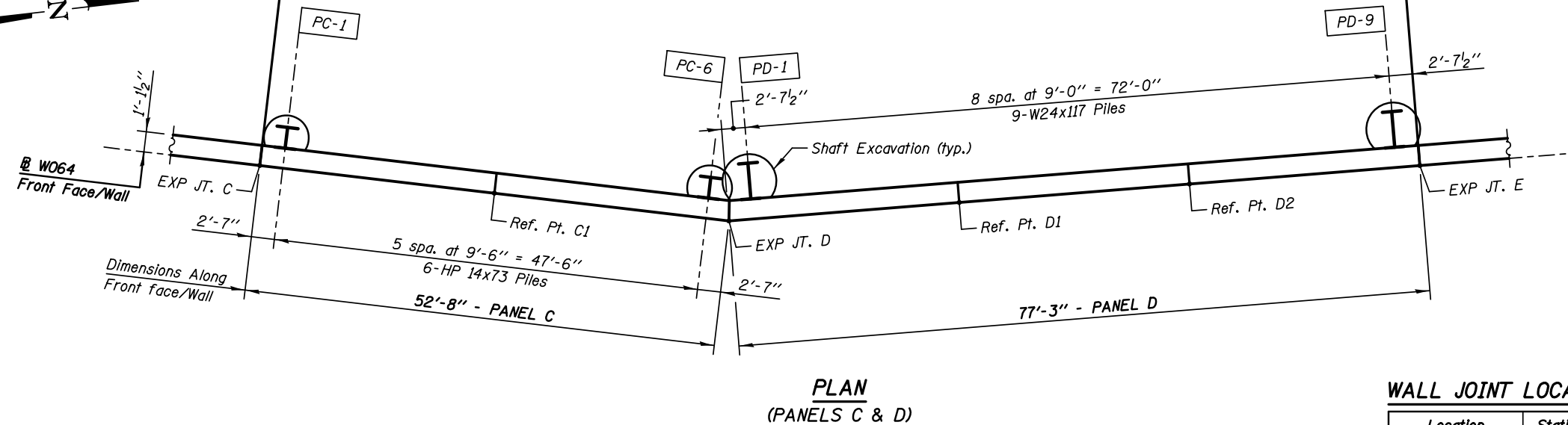
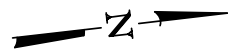
**Bottom of Form Liner Elevations are 1'-0" (1.0') higher than Finish Grade Elevations.

LEGEND

E.F. Each Face

Min Bar Laps

#5 Bars = 2'-5" (Horiz. Top Bars)



WALL JOINT LOCATIONS, HEIGHTS & ELEVATIONS

Location Ref. Points	Station on W064	Wall Height	Top/Wall Elevation	Bottom/Wall Elevation	Finish Grade Elev.	Bottom/Liner Elev.**
Exp. Jt. - C	1+59.00	6'-11"	706.37	699.45	701.45	702.45
C.J. - C1	1+85.33	6'-9"	706.19	699.44	701.54	702.54
Exp. Jt. - D	2+11.67	6'-7"	706.00	699.42	701.63	702.63
C.J. - D1	2+37.42	8'-1"	707.50	699.42	701.72	702.72
C.J. - D2	2+63.17	9'-7"	709.00	699.42	701.81	702.81
Exp. Jt. - E	2+88.92	11'-1"	710.50	699.42	701.90	702.90

KNIGHT
Engineers & Architects

DESIGNED - TB	REVISIONS
CHECKED - WPM	REVISIONS
DRAWN - TB	REVISIONS
CHECKED - WPM	REVISIONS

STATE OF ILLINOIS
DEPARTMENT OF TRANSPORTATION

PLAN & ELEVATION - PANELS C & D
STRUCTURE NUMBER 022-W064

F.A.P. RTE.	SECTION	COUNTY	TOTAL SHEETS	SHEET NO.
338	(112 & 113) WRS-5	DUPAGE	963	655
CONTRACT NO. 60131				

SHEET NO. SC-04 OF 10 SHEETS

ILLINOIS FED. AID PROJECT