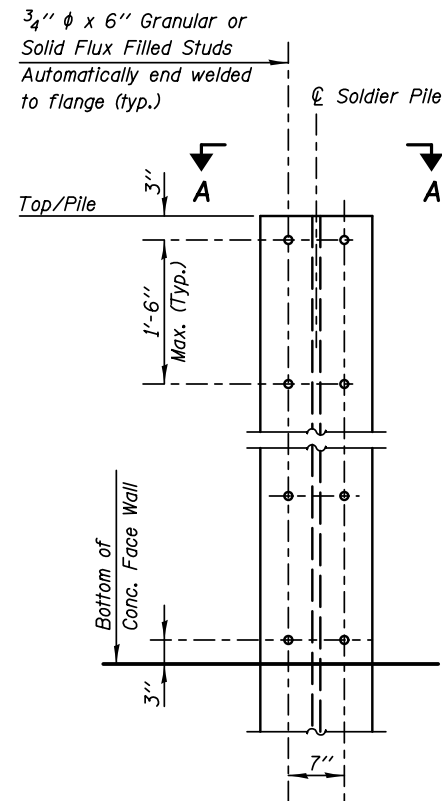
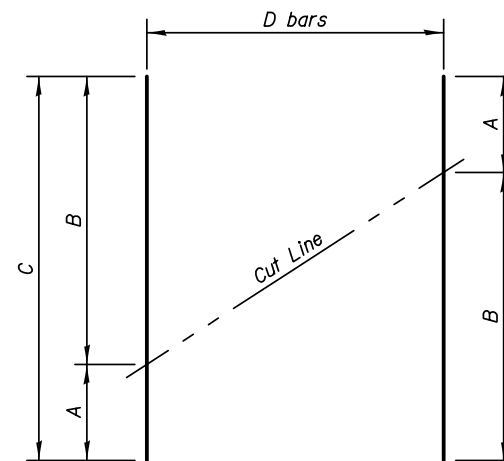


**TYPICAL WALL SECTION**

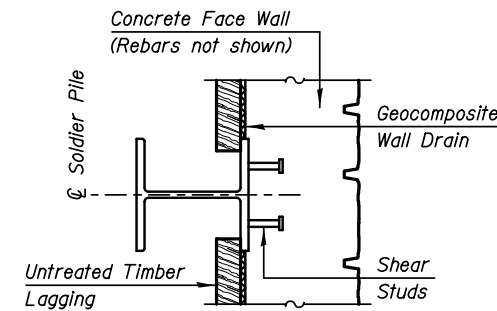


**STUD SHEAR CONNECTORS LAYOUT**



**BAR CUTTING DIAGRAM**

Order bars full length. Cut as shown and use remainder of bars in opposite face.



**SECTION A-A - PLAN**

BAR	A	B	C	D
v200(E)	3'-10"	4'-4"	8'-2"	27
v201(E)	4'-4"	4'-10"	9'-2"	27
v202(E)	4'-10"	5'-4"	10'-2"	27
v204(E)	5'-9"	6'-3"	12'-0"	27
v207(E)	6'-3"	7'-9"	14'-0"	27
v208(E)	7'-9"	9'-3"	17'-0"	27
v209(E)	9'-3"	10'-9"	20'-0"	27
v210(E)	10'-9"	12'-3"	23'-0"	27
v211(E)	12'-3"	13'-9"	26'-0"	27
v212(E)	13'-9"	11'-3"	25'-0"	23
v213(E)	11'-3"	8'-9"	20'-0"	23
v214(E)	8'-9"	6'-0"	14'-9"	25
v215(E)	6'-0"	3'-3"	9'-3"	25

**BILL OF MATERIAL**

BAR	NO.	SIZE	LENGTH	SHAPE
h200(E)	166	#5	6'-0"	————
h201(E)	78	#5	26'-2"	————
h202(E)	30	#5	26'-0"	————
h203(E)	118	#5	25'-5"	————
h204(E)	54	#5	21'-11"	————
h205(E)	34	#5	23'-11"	————
v200(E)	27	#4	8'-2"	————
v201(E)	27	#4	9'-2"	————
v202(E)	27	#4	10'-2"	————
v203(E)	54	#4	5'-4"	————
v204(E)	27	#4	12'-0"	————
v205(E)	108	#4	6'-3"	————
v206(E)	54	#4	6'-5"	————
v207(E)	27	#4	14'-0"	————
v208(E)	27	#4	17'-0"	————
v209(E)	27	#4	20'-0"	————
v210(E)	27	#4	23'-0"	————
v211(E)	27	#4	26'-0"	————
v212(E)	23	#4	25'-0"	————
v213(E)	23	#4	20'-0"	————
v214(E)	25	#4	14'-9"	————
v215(E)	25	#4	9'-3"	————
Structure Excavation			Cu. Yd.	115.0
Concrete Structures			Cu. Yd.	150.0
Form Liner Textured Surface			Sq. Ft.	1555.0
Concrete Sealer			Sq. Ft.	3011.0
Stud Shear Connectors			Each	650
Reinforcement Bars, Epoxy Coated			Pound	13680
Drilling and Setting Soldier Piles (In Soil)			Cu. Ft.	8519.0
Furnishing Soldier Piles (HP14x73)			Foot	546.0
Furnishing Soldier Piles (W24x68)			Foot	130.0
Furnishing Soldier Piles (W24x117)			Foot	874.0

**LEGEND:**  
E.F. Each Face

**KNIGHT**  
Engineers & Architects

DESIGNED - TB  
CHECKED - WPM  
SCALE - NONE  
DATE - 10/15/2012

REVIS  
REVISED  
DRAWN - TB  
CHECKED - WPM

REVIS  
REVISED  
REVISED  
REVISED

**STATE OF ILLINOIS  
DEPARTMENT OF TRANSPORTATION**

**WALL SECTIONS AND DETAILS  
STRUCTURE NUMBER 022-W064**

SHEET NO. SC-06 OF 10 SHEETS

F.A.P. RTE.	SECTION	COUNTY	TOTAL SHEETS	SHEET NO.
338	(112 & 113) WRS-5	DUPAGE	963	657
CONTRACT NO. 60131				

ILLINOIS FED. AID PROJECT