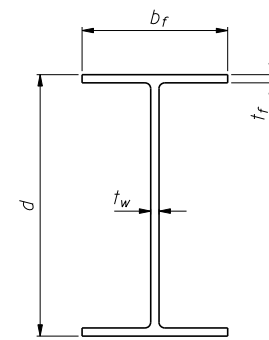
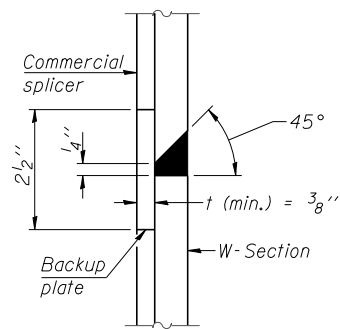


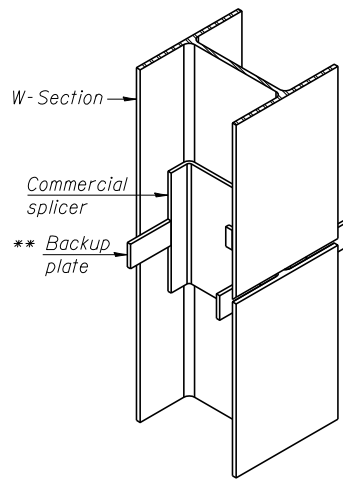
ELEVATION



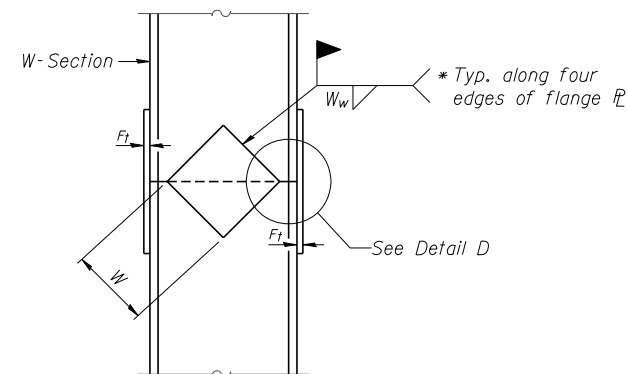
| Designation | Depth d | Flange width b _f | Flange thickness t _f | Web thickness t _w | Encasement diameter A |
|-------------|----------------------------------|-----------------------------|---------------------------------|---------------------------------|-----------------------|
| W27x146 | 27 ³ / ₈ " | 14" | 1" | 5 ⁵ / ₈ " | 36" |



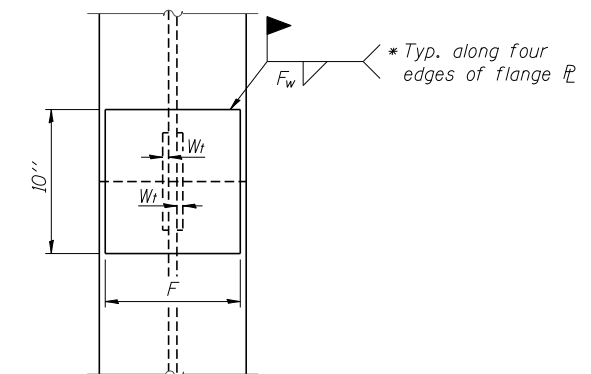
DETAIL "B"



ISOMETRIC VIEW

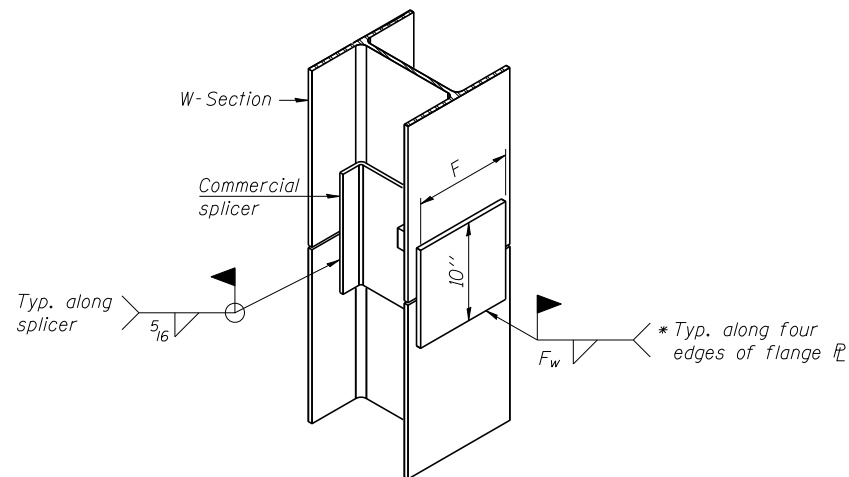


ELEVATION

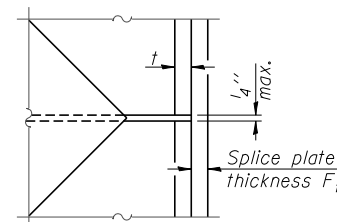


END VIEW

WELDED COMMERCIAL SPLICE



ISOMETRIC VIEW



DETAIL D

| Designation | F | F _t | F _w | W | W _t | W _w |
|-------------|-----|---------------------------------|---------------------------------|----------------------------------|---------------------------------|---------------------------------|
| W27x146 | 12" | 1 ¹ / ₄ " | 3 ³ / ₄ " | 16 ³ / ₄ " | 5 ⁵ / ₈ " | 3 ³ / ₈ " |

WELDED PLATE FIELD SPLICE

WELDED COMMERCIAL SPLICE ALTERNATE

- * Interrupt welds 1/4" from end of web and/or each flange.
- ** Remove portions of backup plates that extend outside the flanges.

Note:
The steel W-Sections shall be according to AASHTO M270 Grade 36.

PILE SPLICE DETAILS
SN 022-W065



Zroka Engineering, P.C.
4216 North Hermitage
Chicago, IL 60613

| | | |
|----------------------------|----------------|-----------|
| USER NAME = SAW | DESIGNED - LAS | REVISED - |
| | CHECKED - DAZ | REVISED - |
| PLOT SCALE = 0.1667' / IN. | DRAWN - SAW | REVISED - |
| PLOT DATE = 10/9/2012 | CHECKED - JLA | REVISED - |

STATE OF ILLINOIS
DEPARTMENT OF TRANSPORTATION

PILE SPLICE DETAILS
STRUCTURE NUMBER 022-W065

SHEET NO. SD-9 OF SD-11 SHEETS

| | | | | |
|--------------------|-------------------|--------|--------------|-----------|
| F.A.P. RTE. | SECTION | COUNTY | TOTAL SHEETS | SHEET NO. |
| 338/IL 59 | (112 & 113) WRS-5 | DUPAGE | 963 | 670 |
| CONTRACT NO. 60131 | | | | |

ILLINOIS FED. AID PROJECT

FILE NAME = ...E0131-W065-009-PileSpliceDetails.dgn