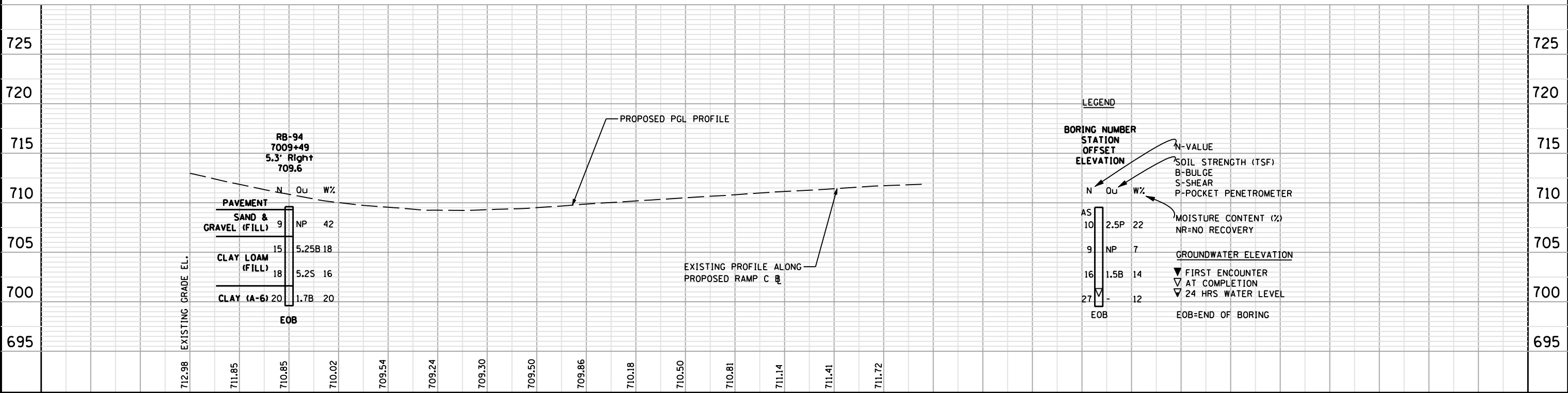
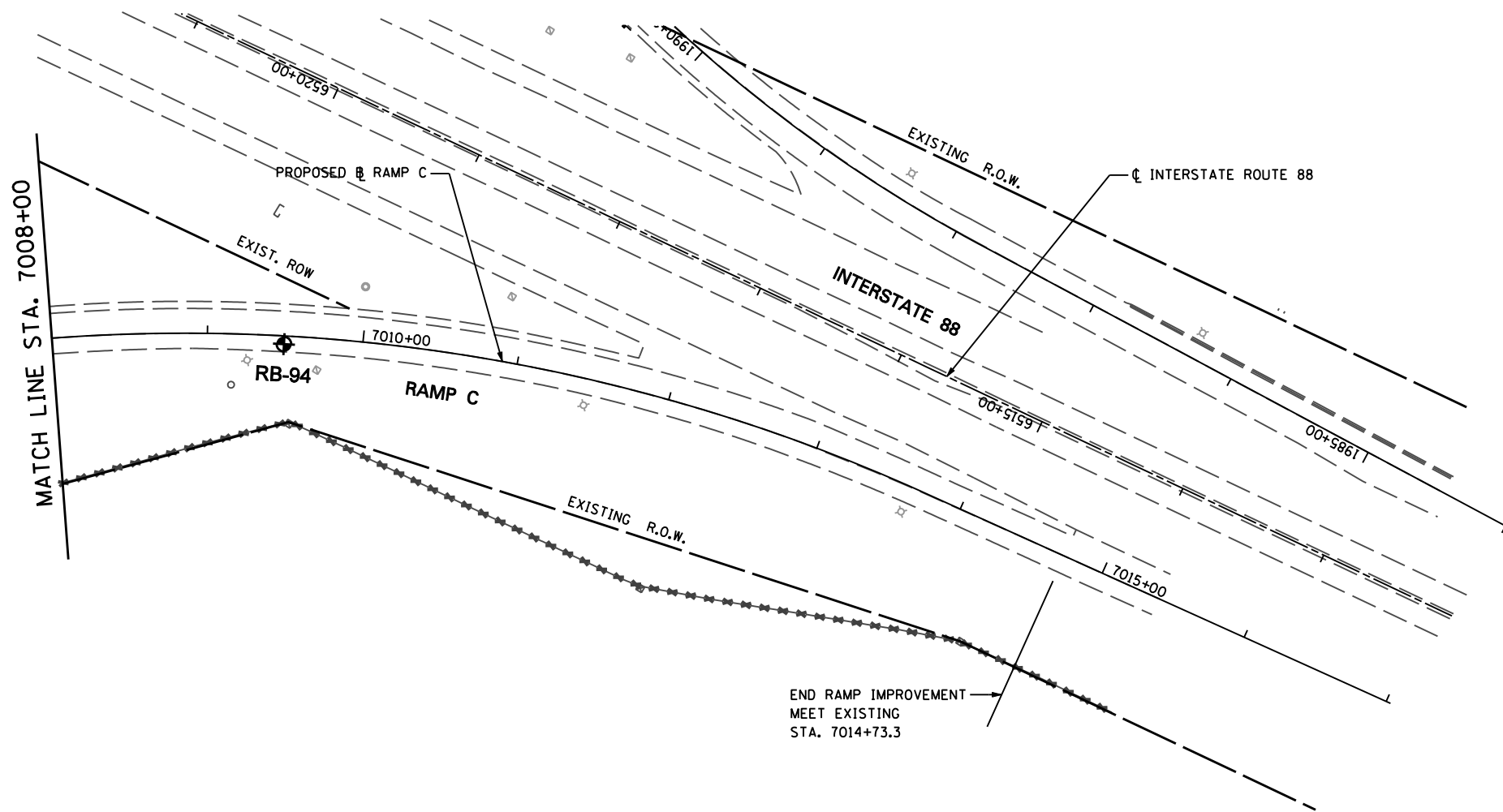


PLAN	SURVEYED	BY	DATE
	PLOTTED		
	GRADES CHECKED		
	STRUCTURE NOTATIONS CHKD		
	NOTE BOOK NO.		
	FILE NAME		

PROFILE	SURVEYED	BY	DATE
	PLOTTED		
	GRADES CHECKED		
	STRUCTURE NOTATIONS CHKD		
	NOTE BOOK NO.		
	FILE NAME		



LEGEND

N	Qu	W%	N-VALUE
AS	2.5P	22	SOIL STRENGTH (TSF)
10			B-BULGE
9	NP	7	S-SHEAR
16	1.5B	14	P-POCKET PENETROMETER
27		12	MOISTURE CONTENT (%)
			NR=NO RECOVERY
			GROUNDWATER ELEVATION
			▼ FIRST ENCOUNTER
			▽ AT COMPLETION
			▽ 24 HRS WATER LEVEL
			EOB=END OF BORING

Geo Services, Inc. Geotechnical, Environmental & Civil Engineering 805 Amherst Court, Suite 204 Naperville, Illinois 60565 (630) 355-2836	USER NAME :	DESIGNED - RWC	REVISED -	STATE OF ILLINOIS DEPARTMENT OF TRANSPORTATION	SOIL BORING PLAN / PROFILE - RAMP C		F.A.P. RTE.	SECTION	COUNTY	TOTAL SHEETS	SHEET NO.
	PLOT SCALE :	DRAWN - RWC	REVISED -				338/IL 59	(112 & 113) WRS-5	DUPAGE	963	699
	PLOT DATE :	CHECKED - AJP	REVISED -				CONTRACT NO. 60131				
		DATE - 5/17/2012	REVISED -				FED. ROAD DIST. NO. ILLINOIS FED. AID PROJECT				
SCALE: AS SHOWN SHEET NO. 2 OF 2 SHEETS STA. 7000+00 TO STA. 7007+86											