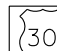




**ROUTE MARKERS**


 FOR U.S. ROUTES  
M1-40-2424

 FOR ILLINOIS ROUTES  
M1-50-2424

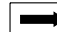
 R.R. UNMARKED ROUTES  
SPECIAL 24" x 18" VARIABLE  
4" BLACK LETTERS ON WHITE  
REFLECTIVE BACKGROUND


**ARROWS SIGNS**

 M5-1L-2115

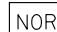
 M5-1R-2115

 M6-1-2115

 M6-1-2115

 M6-3-2115

**CARDINAL DIRECTION & DETOUR SIGNS**

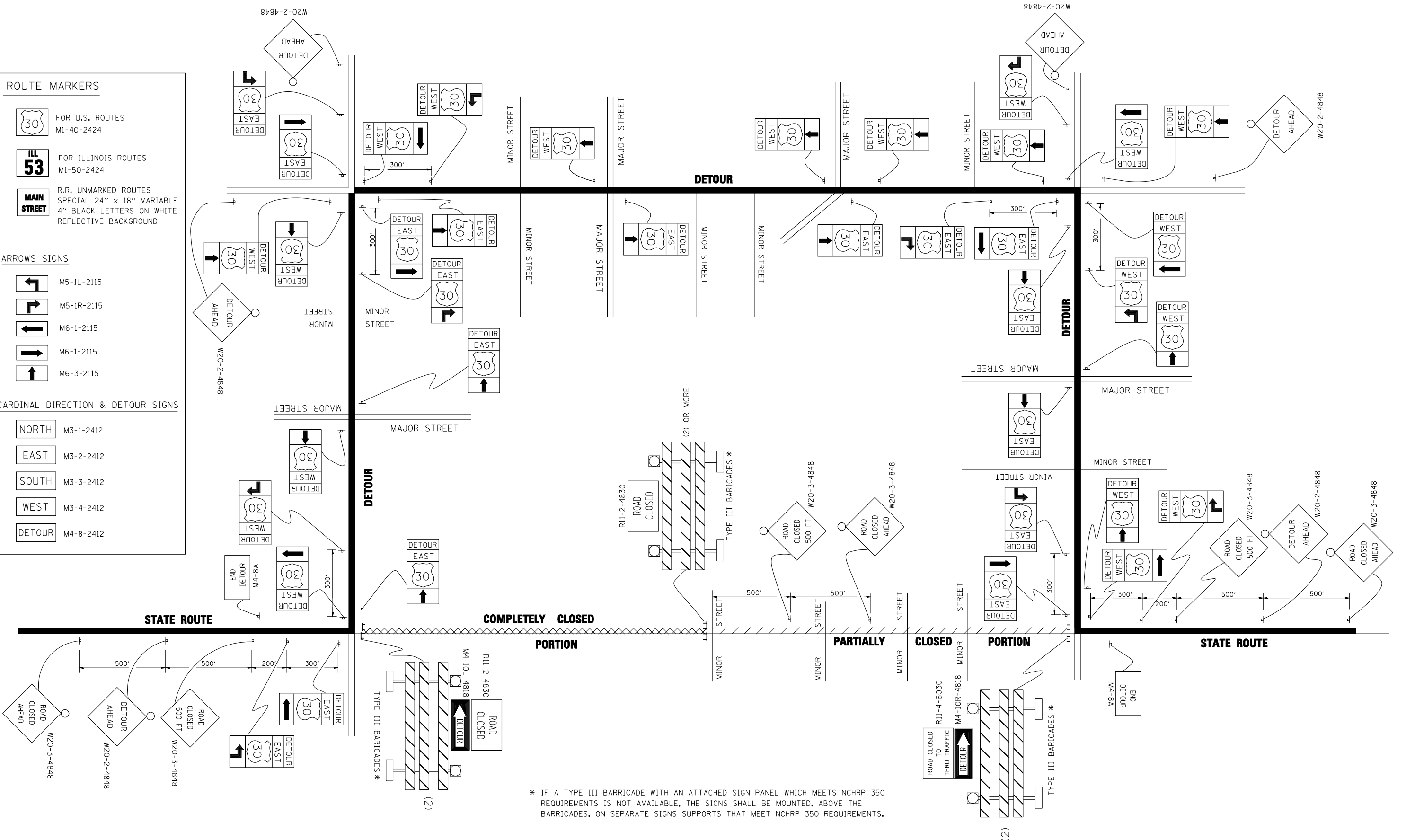
 NORTH M3-1-2412

 EAST M3-2-2412

 SOUTH M3-3-2412

 WEST M3-4-2412

 DETOUR M4-8-2412



\* IF A TYPE III BARRICADE WITH AN ATTACHED SIGN PANEL WHICH MEETS NCHRP 350 REQUIREMENTS IS NOT AVAILABLE, THE SIGNS SHALL BE MOUNTED, ABOVE THE BARRICADES, ON SEPARATE SIGNS SUPPORTS THAT MEET NCHRP 350 REQUIREMENTS.

FILE NAME =	USER NAME = drivakosgn	DESIGNED -	REVISED - 10-18-02
ct:\pw\work\PWIDOT\DRIVAKOSGN\10108315\10121.dgn		DRAWN -	REVISED - R. BORO 09-14-09
		PLOT SCALE = 49.9999' / IN.	REVISED -
		CHECKED -	REVISED -
		DATE -	REVISED -

**STATE OF ILLINOIS  
DEPARTMENT OF TRANSPORTATION**

<b>DETOUR SIGNING FOR CLOSING STATE HIGHWAYS</b>			
SCALE: NONE	SHEET NO. 1 OF 1 SHEETS	STA.	TO STA.

F.A. RTE.	SECTION	COUNTY	TOTAL SHEETS	SHEET NO.
338	(112 & 113)WRS-5	DUPAGE	963	727
<b>TC-21</b>		CONTRACT NO. 60I31		
FED. ROAD DIST. NO. 1 ILLINOIS FED. AID PROJECT				