

STATE OF ILLINOIS
DEPARTMENT OF TRANSPORTATION
DIVISION OF HIGHWAYS

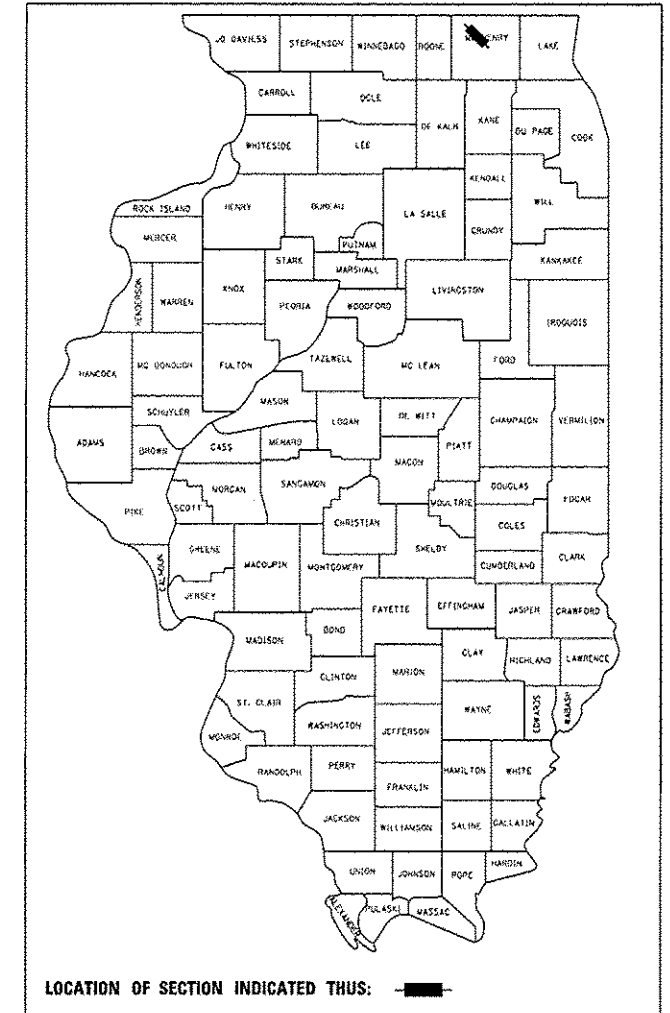
F.A.P. RTE.	SECTION	COUNTY	TOTAL SHEETS	SHEET NO.
305	29R-RS-4	McHENRY	25	1
FED. ROAD DIST. NO. 1	ILLINOIS		FED AID PROJECT	
D-91-298-11			CONTRACT NO. 60N28	
*25+1=26				

PROPOSED HIGHWAY PLANS

F.A.P 305 (US ROUTE 14)
SECTION 29R-RS-4
IL ROUTE 23 TO BUNKER HILL ROAD
RESURFACING (3P)
PROJECT: HD-0305(050)
MCHENRY COUNTY
C-91-298-11

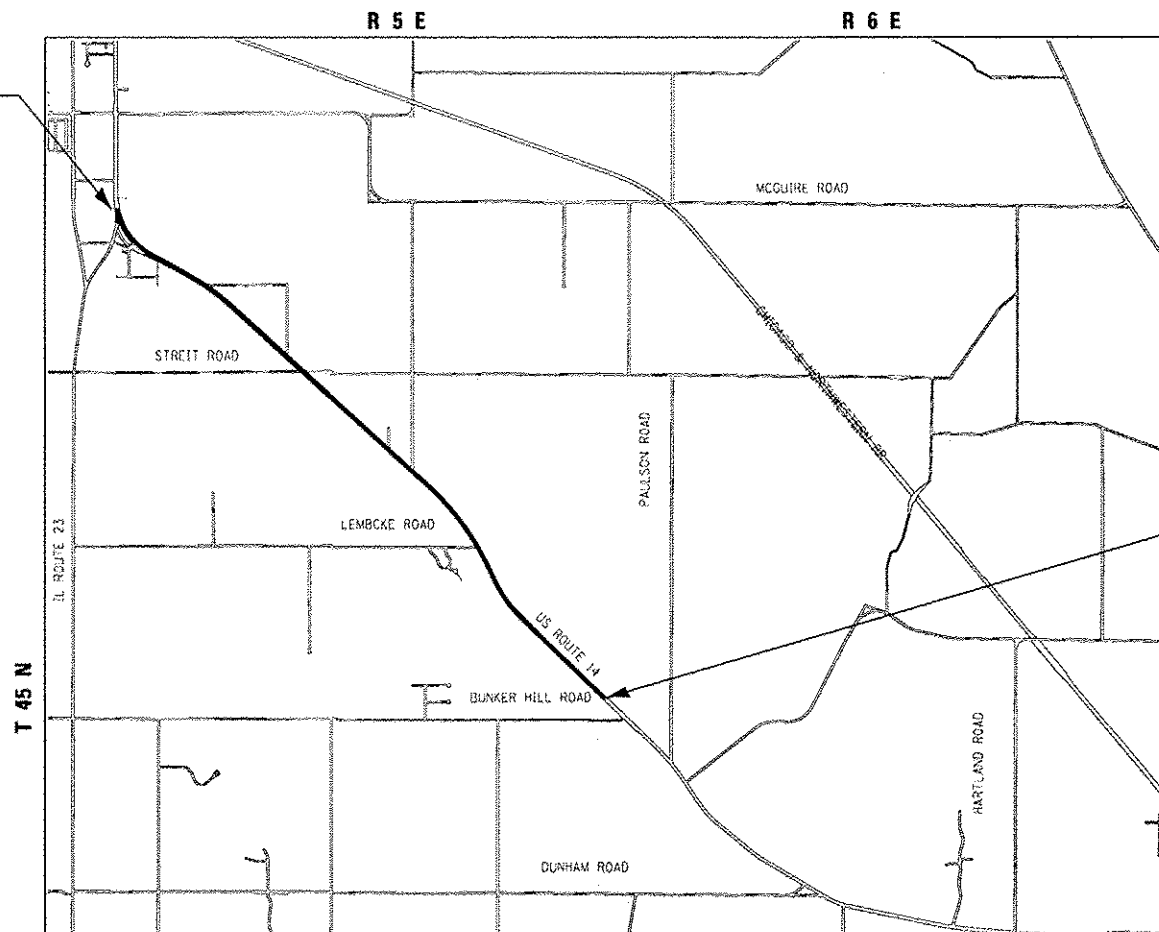
FOR INDEX OF SHEETS, SEE SHEET NO. 2

IMPROVEMENT LOCATED WITHIN
THE CITY OF HARVARD AND
UNINCORPORATED McHENRY COUNTY

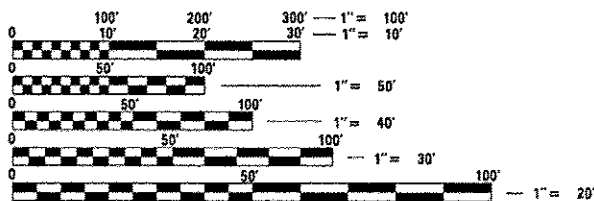


PROJECT BEGINS
STA 5+76

PROJECT ENDS
STA 227+69



TRAFFIC DATA
US ROUTE 14
2009 ADT = 7,400
SPEED LIMIT = 55 MPH



FULL SIZE PLANS HAVE BEEN PREPARED USING STANDARD ENGINEERING SCALES. REDUCED SIZED PLANS WILL NOT CONFORM TO STANDARD SCALES. IN MAKING MEASUREMENTS ON REDUCED PLANS, THE ABOVE SCALES MAY BE USED.

SCALE: NTS

DUNHAM & HARTLAND TOWNSHIPS
GROSS LENGTH OF IMPROVEMENT = 22,193 LF OR 4.203 MILES
NET LENGTH OF IMPROVEMENT = 22,193 LF OR 4.203 MILES

STATE OF ILLINOIS
DEPARTMENT OF TRANSPORTATION
DIVISION OF HIGHWAYS

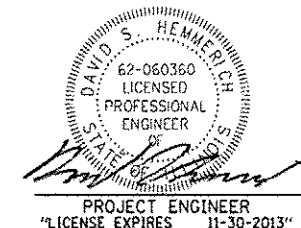
SUBMITTED October 15 2012
John Fatzmann DEPUTY DIRECTOR OF HIGHWAYS, REGION ENGINEER
John D. Baranzelli, P.E. ENGINEER OF DESIGN AND ENVIRONMENT
William R. Frey, Jr. DIRECTOR OF HIGHWAYS, CHIEF ENGINEER

Call Before You Dig
JULIE ILLINOIS ONE-CALL SYSTEM

CONTACT JULIE AT 811 OR 800-892-0123 WITH THE FOLLOWING:
COUNTY = McHENRY
CITY-TOWNSHIP = DUNHAM & HARTLAND
SEC. & 1/4 SEC. NO. = 11, 12, 13, 18, 19, 20
48 HOURS (2 working days) BEFORE YOU DIG

DISTRICT ONE -
PROJECT MANAGER: KEN ENG (847) 705-4247 (IDOT)
PROJECT ENGINEER: ROBERT LENZINI (815) 459-1260 (BAXTER & WOODMAN)

CONTRACT NO. 60N28



PRINTED BY THE AUTHORITY
OF THE STATE OF ILLINOIS