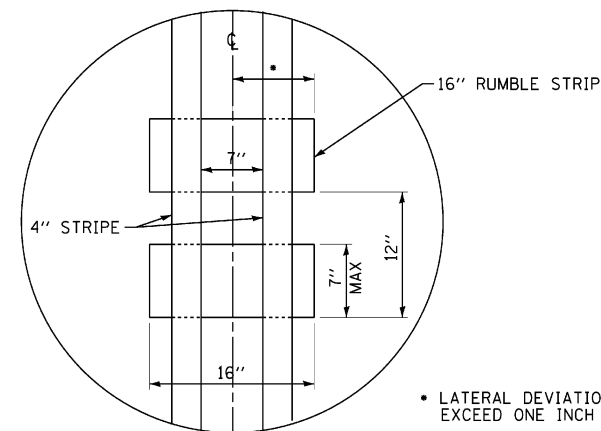
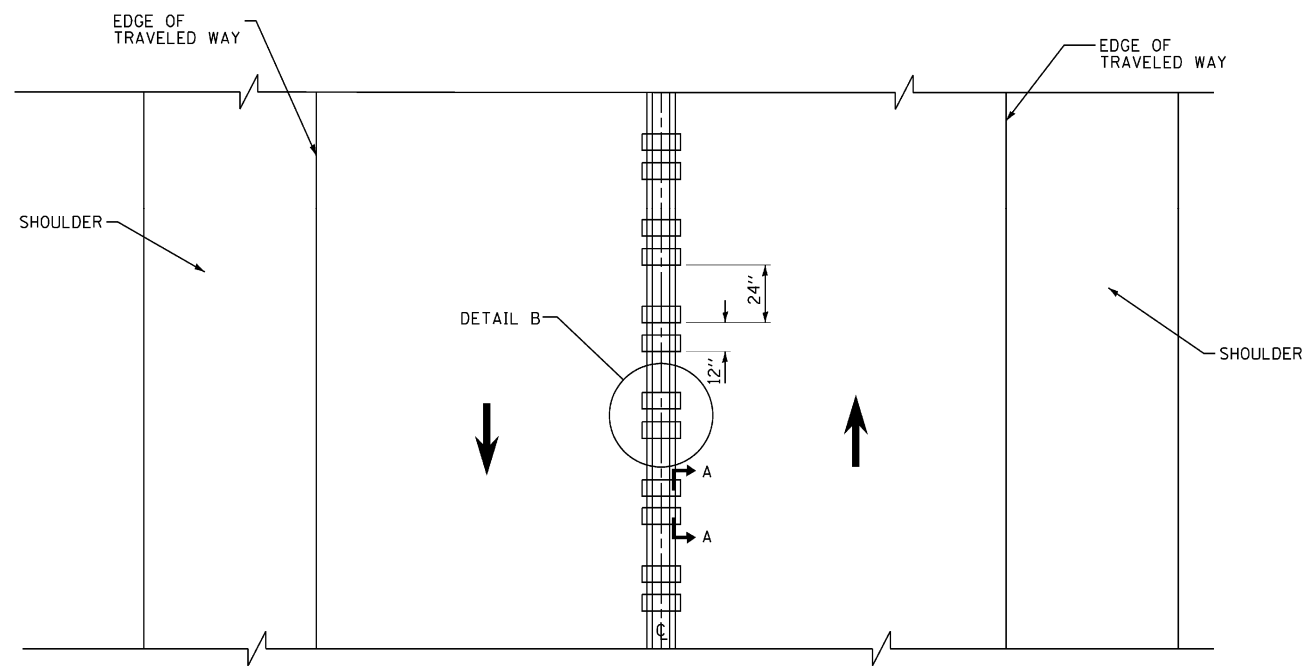


SECTION A-A



DETAIL B

• LATERAL DEVIATION SHALL NOT EXCEED ONE INCH IN 100 FEET.



TWO-WAY ROAD

GENERAL NOTES

SEE STANDARD 780001 FOR OTHER STRIPING LAYOUTS.

RUMBLE STRIPS SHALL NOT BE PLACED ON BRIDGES.

ALL RUMBLE STRIPS SHALL BE MILLED.

CENTERLINE RUMBLE STRIPS SHALL BE CONTINUOUS THROUGH CONNECTIONS OF SIDEROADS WITH NO LEFT TURN LANES.

DISCONTINUE CENTERLINE RUMBLE STRIPS THROUGH THE LIMITS OF ALL LEFT TURN LANES, INCLUDING ANY LANE TAPER SECTIONS.

WHERE USED, ADJUST SPACING OF RAISED REFLECTIVE PAVEMENT MARKERS TO FALL IN WIDER GAP BETWEEN RUMBLE STRIPS.

HOT-SPRAY THERMOPLASTIC PAVEMENT MARKING WILL BE USED OVER THE RUMBLE STRIPES.

COPYRIGHT © 2012 BY BAXTER & WOODMAN, INC. ALL RIGHTS RESERVED. PROJECT NO. 100153-W018-MISC-DETS.dgn
 DESIGNED BY DSH, DRAWN BY KAR, CHECKED BY LDH, DATE 12-13-10
 LICENSE NO. 185-002123-EXPRES 4/30/2013
 \\cpr.baxwood.com\proj\Bcrs\CRystal\100153-W018-14-11-23 To Bunker Hill\CADD SURVEY\DRAWINGS\DCNS\100153-W018-MISC-DETS.dgn



DESIGNED	- DSH	REVISED	-
DRAWN	- KAR	REVISED	-
CHECKED	- LDH	REVISED	-
DATE	- 12-13-10	FILE	- 100153-W018-MISC-DETS.dgn

**STATE OF ILLINOIS
DEPARTMENT OF TRANSPORTATION**

**US ROUTE 14
IL ROUTE 23 TO BUNKER HILL ROAD
RUMBLE STRIPES FOR CENTERLINE, NON-FREWAY**

SCALE: NONE

STA. TO STA.

F.A.P. RTE.	SECTION	COUNTY	TOTAL SHEETS	SHEET NO.
305	29R-RS-4	McHENRY	25	16
C-91-298-11			CONTRACT NO. 60N28	
FED. ROAD DIST. NO. 1 ILLINOIS FED AID PROJECT				