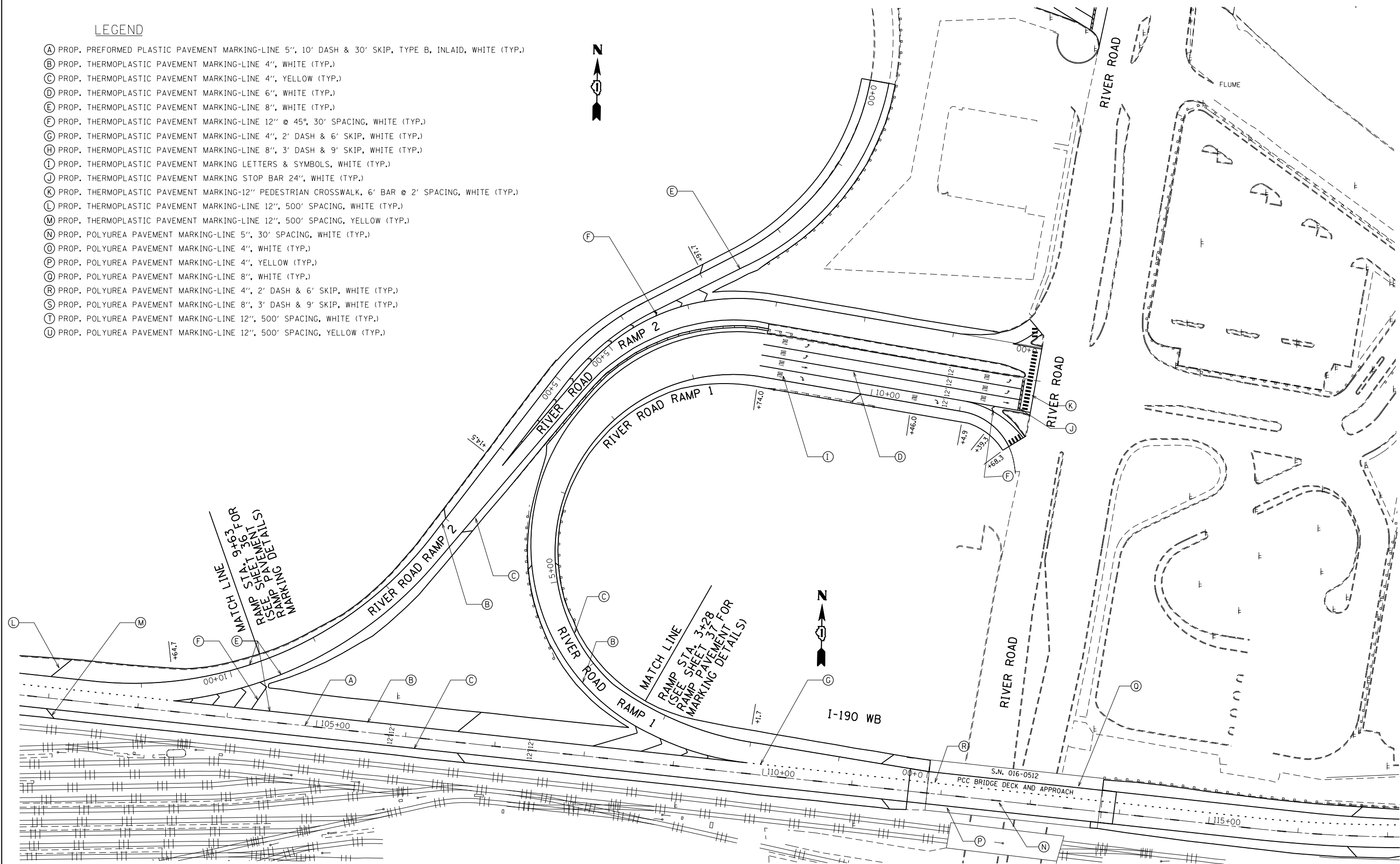


**LEGEND**

- (A) PROP. PREFORMED PLASTIC PAVEMENT MARKING-LINE 5", 10' DASH & 30' SKIP, TYPE B, INLAID, WHITE (TYP.)
- (B) PROP. THERMOPLASTIC PAVEMENT MARKING-LINE 4", WHITE (TYP.)
- (C) PROP. THERMOPLASTIC PAVEMENT MARKING-LINE 4", YELLOW (TYP.)
- (D) PROP. THERMOPLASTIC PAVEMENT MARKING-LINE 6", WHITE (TYP.)
- (E) PROP. THERMOPLASTIC PAVEMENT MARKING-LINE 8", WHITE (TYP.)
- (F) PROP. THERMOPLASTIC PAVEMENT MARKING-LINE 12" @ 45°, 30' SPACING, WHITE (TYP.)
- (G) PROP. THERMOPLASTIC PAVEMENT MARKING-LINE 4", 2' DASH & 6' SKIP, WHITE (TYP.)
- (H) PROP. THERMOPLASTIC PAVEMENT MARKING-LINE 8", 3' DASH & 9' SKIP, WHITE (TYP.)
- (I) PROP. THERMOPLASTIC PAVEMENT MARKING LETTERS & SYMBOLS, WHITE (TYP.)
- (J) PROP. THERMOPLASTIC PAVEMENT MARKING STOP BAR 24", WHITE (TYP.)
- (K) PROP. THERMOPLASTIC PAVEMENT MARKING-12" PEDESTRIAN CROSSWALK, 6' BAR @ 2' SPACING, WHITE (TYP.)
- (L) PROP. THERMOPLASTIC PAVEMENT MARKING-LINE 12", 500' SPACING, WHITE (TYP.)
- (M) PROP. THERMOPLASTIC PAVEMENT MARKING-LINE 12", 500' SPACING, YELLOW (TYP.)
- (N) PROP. POLYUREA PAVEMENT MARKING-LINE 5", 30' SPACING, WHITE (TYP.)
- (O) PROP. POLYUREA PAVEMENT MARKING-LINE 4", WHITE (TYP.)
- (P) PROP. POLYUREA PAVEMENT MARKING-LINE 4", YELLOW (TYP.)
- (Q) PROP. POLYUREA PAVEMENT MARKING-LINE 8", WHITE (TYP.)
- (R) PROP. POLYUREA PAVEMENT MARKING-LINE 4", 2' DASH & 6' SKIP, WHITE (TYP.)
- (S) PROP. POLYUREA PAVEMENT MARKING-LINE 8", 3' DASH & 9' SKIP, WHITE (TYP.)
- (T) PROP. POLYUREA PAVEMENT MARKING-LINE 12", 500' SPACING, WHITE (TYP.)
- (U) PROP. POLYUREA PAVEMENT MARKING-LINE 12", 500' SPACING, YELLOW (TYP.)



|  |                         |            |           |
|--|-------------------------|------------|-----------|
| FILE NAME =  | USER NAME = rodriguezma | DESIGNED - | REVISED - |
| ei:\pw\work\p\dot\rodriguezma\d0299718\132812-sht-pmk2.dgn |                         | DRAWN -    | REVISED - |
|  |                         | CHECKED -  | REVISED - |
|  |                         | DATE -     | REVISED - |

**STATE OF ILLINOIS  
DEPARTMENT OF TRANSPORTATION**

**PAVEMENT MARKING PLAN  
I-190 (O'HARE AIRPORT TO I-90)**

|                    |                       |        |                           |           |
|--------------------|-----------------------|--------|---------------------------|-----------|
| F.A.I. RTE.        | SECTION               | COUNTY | TOTAL SHEETS              | SHEET NO. |
| 190                | (0101.6 & 0102.5)RS-2 | COOK   | 85                        | 42        |
| CONTRACT NO. 60T33 |                       |        | ILLINOIS FED. AID PROJECT |           |

SHEET OF SHEETS STA. TO STA.