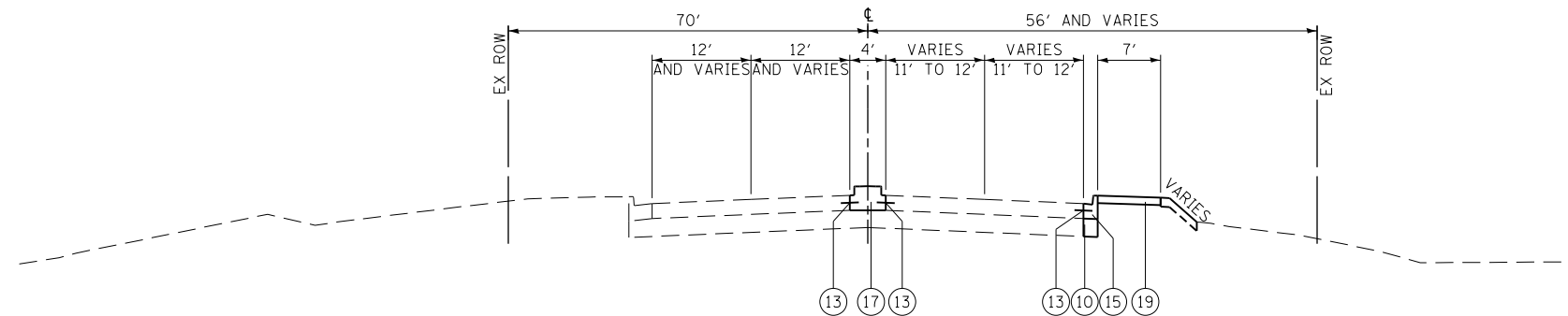
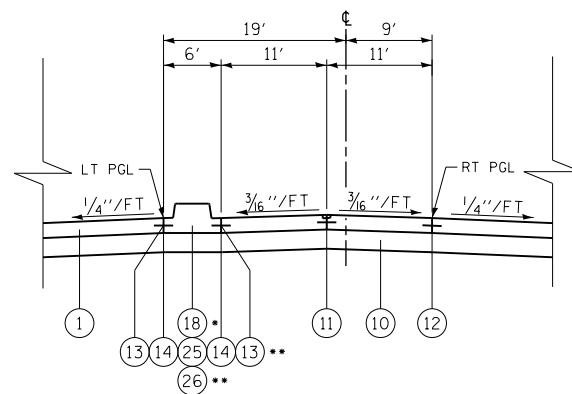


PROPOSED TYPICAL SECTION  
WILLOW ROAD  
STATION 720+56.00 TO STATION 726+76.26  
STATION 726+52.56 TO STATION 729+22.08

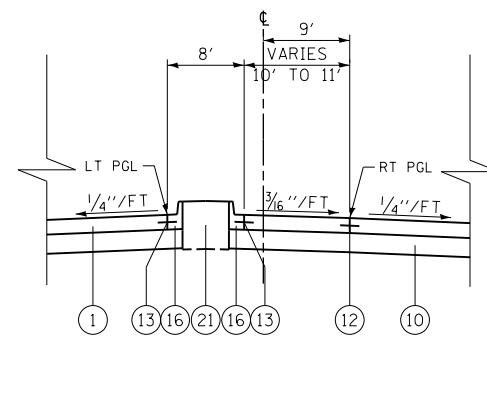


PROPOSED TYPICAL SECTION  
WILLOW ROAD  
STATION 726+76.26 TO STATION 737+38.97

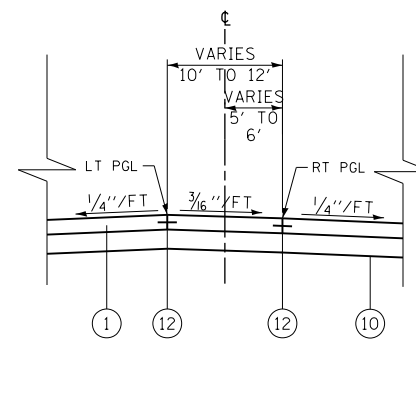
NOTE: SEE SHEET NO. 492 FOR BRIDGE TYPICAL SECTION FROM STATION 730+12.38 TO STATION 733+28.93



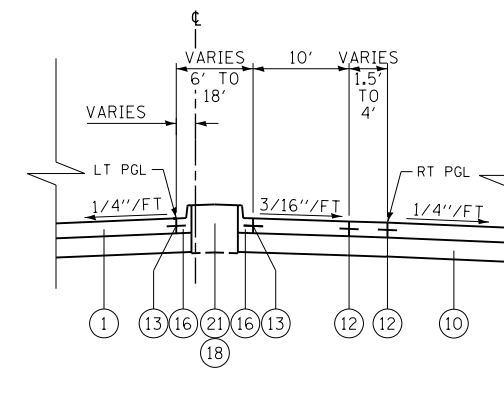
PROPOSED DUAL LEFT TURN LANE DETAIL  
WILLOW ROAD  
EASTBOUND  
STATION 633+76.00 TO STATION 640+52.49  
WESTBOUND  
STATION 642+38.60 TO STATION 647+40.00



PROPOSED SINGLE LEFT TURN LANE  
RAISED MEDIAN DETAIL  
WILLOW ROAD  
EASTBOUND  
STATION 649+25.00 TO STATION 652+45.00  
STATION 658+95.00 TO STATION 664+71.00  
STATION 692+98.00 TO STATION 696+24.00  
WESTBOUND  
STATION 653+83.00 TO STATION 657+03.00  
STATION 665+60.00 TO STATION 668+92.00  
STATION 697+19.00 TO STATION 700+45.00



PROPOSED SINGLE LEFT TURN LANE  
FLUSH MEDIAN DETAIL  
WILLOW ROAD  
EASTBOUND  
STATION 688+40.00 TO STATION 691+91.00  
STATION 706+98.00 TO STATION 711+88.50  
WESTBOUND  
STATION 669+53.35 TO STATION 673+00.00  
STATION 678+94.00 TO STATION 682+57.00  
STATION 711+88.50 TO STATION 714+06.00



PROPOSED SINGLE OFFSET LEFT TURN LANE  
RAISED MEDIAN DETAIL  
WILLOW ROAD  
EASTBOUND  
STATION 715+45.00 TO STATION 718+12.36  
STATION 720+56.00 TO STATION 722+77.31  
WESTBOUND  
STATION 719+03.60 TO STATION 720+71.00  
STATION 723+72.22 TO STATION 725+60.00

EXISTING

- (A) HOT-MIX ASPHALT SURFACE AND BINDER COURSE
- (B) PORTLAND CEMENT CONCRETE PAVMENT (8 1/4" AND VARIES)
- (C) PORTLAND CEMENT CONCRETE PAVEMENT (9" AND VARIES)
- (D) PORTLAND CEMENT CONCRETE PAVEMENT (10" AND VARIES)
- (E) PORTLAND CEMENT CONCRETE PAVEMENT (12 1/4" AND VARIES)
- (F) STABILIZED BASE COURSE (8" AND VARIES)
- (G) SUB-BASE GRANULAR MATERIAL (4" AND VARIES)
- (H) AGGREGATE SUBGRADE (12")
- (I) GRASS MEDIAN
- (J) CONCRETE MEDIAN, TY SB-6.06
- (K) CONCRETE MEDIAN, TY SB-6.12
- (L) COMBINATION CONCRETE CURB & GUTTER, TY B-6.12
- (M) COMBINATION CONCRETE CURB & GUTTER, TY B-6.24
- (N) BITUMINOUS SHOULDER
- (O) AGGREGATE WEDGE SHOULDER, TY B
- (P) PORTLAND CEMENT CONCRETE SIDEWALK (5")
- (Q) MULTI-USE PATH
- (R) MEDIAN BARRIER

PROPOSED

- (1) PORTLAND CEMENT CONCRETE PAVEMENT 9 1/4" (JOINTED)
- (2) PORTLAND CEMENT CONCRETE PAVEMENT 10 1/4" (JOINTED)
- (3) HOT-MIX ASPHALT SURFACE COURSE, MIX "D", N70 2"
- (4) POLYMERIZED HOT-MIX ASPHALT SURFACE COURSE, MIX "F", N90 2"
- (5) HOT-MIX ASPHALT BINDER COURSE, IL-19, N70 7 1/2"
- (6) HOT-MIX ASPHALT BINDER COURSE, IL-19, N90 12 1/4"
- (7) HOT-MIX ASPHALT SHOULDERS, 7 1/2"
- (8) HOT-MIX ASPHALT SHOULDERS, 12 1/4"
- (9) NOT USED
- (10) AGGREGATE SUBGRADE IMPROVEMENT 12"
- (11) LONGITUDINAL SAWED JOINT NO. 6 X 2'-6" LONG DEFORMED TIE BARS (EPOXY COATED) AT 2'-6" C-C (STANDARD 420001-07) (INCLUDED IN THE COST OF PCC PAVEMENT)
- (12) LONGITUDINAL CONSTRUCTION JOINT NO. 6 X 2' LONG DEFORMED TIE BARS GROUTED-IN-PLACE (EPOXY COATED) AT 2'-C-C (STANDARD 420001-07) (INCLUDED IN THE COST OF PCC PAVEMENT)
- (13) NO. 6 X 2' LONG DEFORMED TIE BARS GROUTED-IN-PLACE (EPOXY COATED) AT 2'-C-C (STANDARD 420001-07) (INCLUDED IN THE COST OF COMBINATION CURB & GUTTER OR CONCRETE MEDIAN)
- (14) COMBINATION CONCRETE CURB & GUTTER, TY B-6.12
- (15) COMBINATION CONCRETE CURB & GUTTER, TY B-6.24
- (16) COMBINATION CONCRETE CURB & GUTTER, TY B-9.12 (MODIFIED)
- (17) CONCRETE MEDIAN, TY SB-6.06
- (18) CONCRETE MEDIAN, TY SB-9.12
- (19) PORTLAND CEMENT CONCRETE SIDEWALK 5"
- (20) TOPSOIL FURNISH AND PLACE 6" AND SODDING OR SEEDING AS NOTED ON PLANS
- (21) TOPSOIL FURNISH AND PLACE, 30" AND SODDING OR LANDSCAPING AS NOTED ON PLANS
- (22) PIPE UNDERDRAINS, FABRIC LINED TRENCH 4"
- (23) BRICK SIDEWALK
- (24) CONCRETE MEDIAN SURFACE, 4 INCH
- (25) STAMPED COLORED CONCRETE MEDIAN SURFACE, 4 INCH (SPECIAL)
- (26) AGGREGATE BASE COURSE, TYPE B

FILE NAME =	USER NAME = BAW:tor.t	DESIGNED - JLV	REVISED -
G:\CH11\0158\Road\Sheets\0160T35-SHT-TYPICAL.dgn		DRAWN - KAL	REVISED -
		CHECKED - RCB	REVISED -
		DATE - 10/31/2012	REVISED -

STATE OF ILLINOIS  
DEPARTMENT OF TRANSPORTATION

TYPICAL SECTIONS

SCALE: N.T.S. SHEET NO. 29 OF 919 SHEETS

F.A.P. R.T.E.	SECTION	COUNTY	TOTAL SHEETS	SHEET NO.
305	(1920.01,1518,2022&1922,4BIR	COOK	919	29
CONTRACT NO. 60T35				
FED. ROAD DIST. NO. 1 ILLINOIS FED. AID PROJECT				