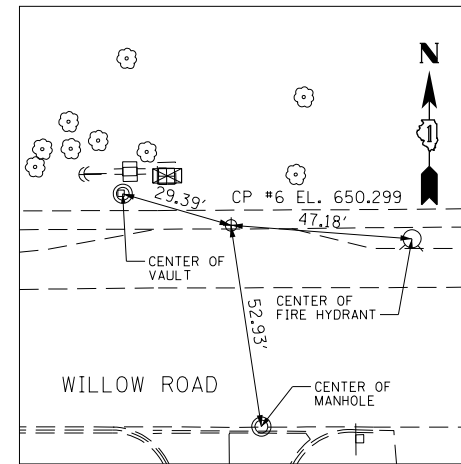


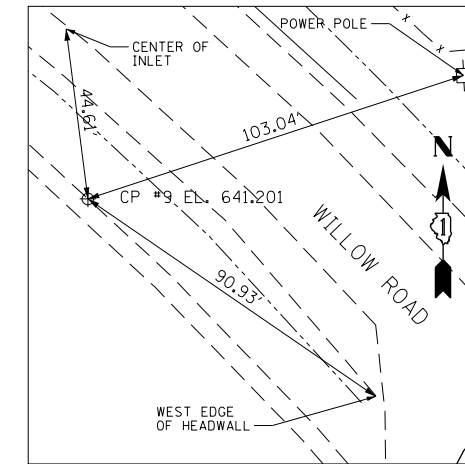
**CONTROL POINT #3**

CUT "X" AT SOUTHERN END OF ISLAND ON NORTH SIDE WILLOW RD INTERSECTION WITH THREE LAKES DR AND FOX MEADOW DR.  
 STA 653+08.2056 60.7085' LT  
 N 1,918,498.1390 E 1,130,416.0060



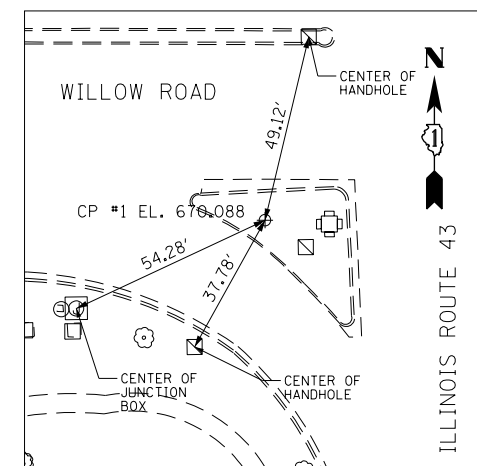
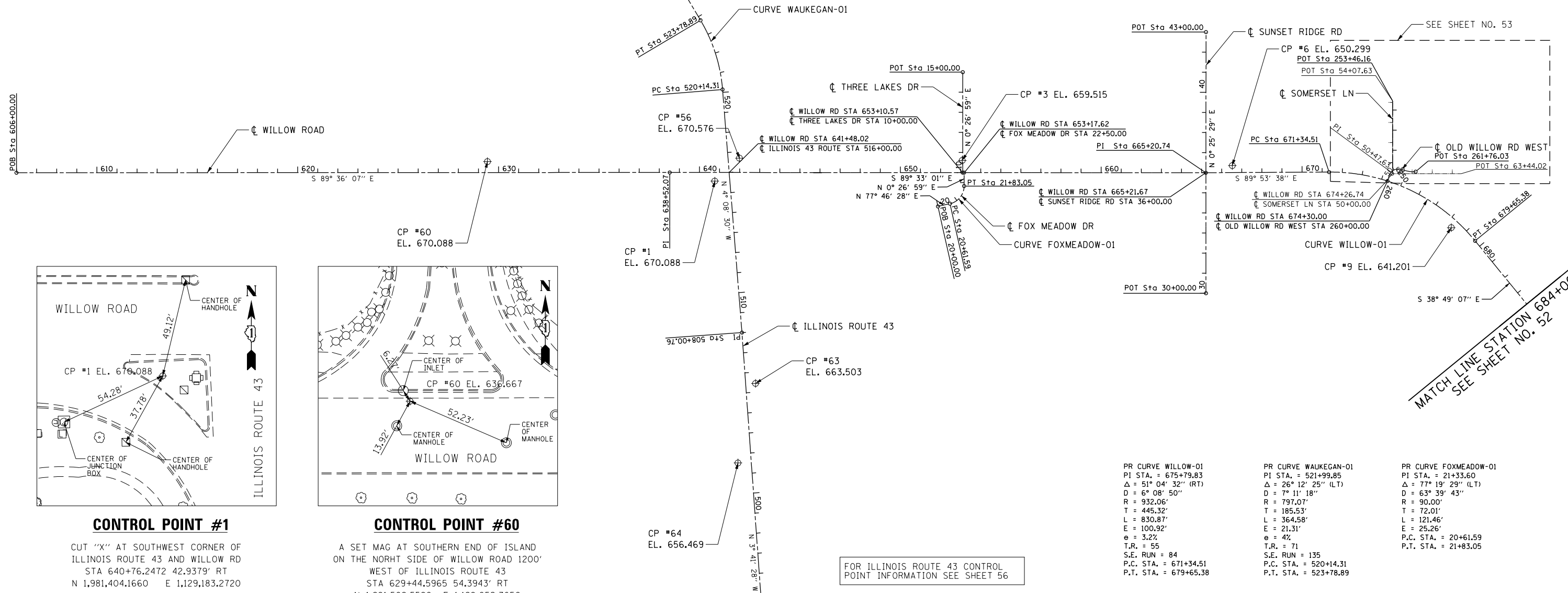
**CONTROL POINT #6**

CUT "X" AT NORTH SIDE OF WILLOW RD ± 100' EAST OF SUNSET RIDGE RD IN LINE WITH CL OF ENTRANCE TO SHELL  
 STA 666+52.8696 34.6538' LT  
 N 1,981,462.3240 E 1,131,760.2200



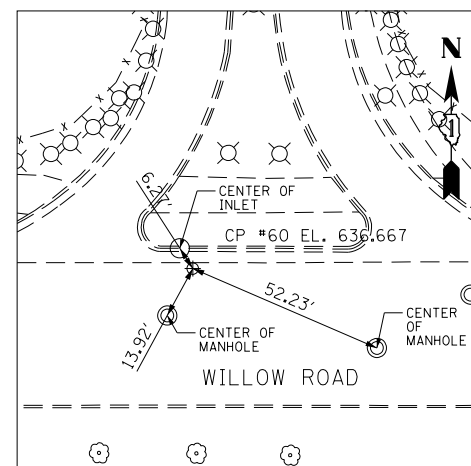
**CONTROL POINT #9**

CUT "X" ± 120' NORTHERLY OF CL TO BRACKEN LN ON EAST EDGE OF SIDEWALK (WEST SIDE WILLOW RD).  
 STA 678+33.0350 41.3837' RT  
 N 1,981,145.6310 E 1,132,848.0310



**CONTROL POINT #1**

CUT "X" AT SOUTHWEST CORNER OF ILLINOIS ROUTE 43 AND WILLOW RD  
 STA 640+76.2472 42.9379' RT  
 N 1,981,404.1660 E 1,129,183.2720



**CONTROL POINT #60**

A SET MAG AT SOUTHERN END OF ISLAND ON THE NORTH SIDE OF WILLOW ROAD 1200' WEST OF ILLINOIS ROUTE 43  
 STA 629+44.5965 54.3943' RT  
 N 1,981,509.5590 E 1,128,052.3650

FOR ILLINOIS ROUTE 43 CONTROL POINT INFORMATION SEE SHEET 56

|   |   |   |
|---|---|---|
| PR CURVE WILLOW-01<br>PI STA. = 675+79.83<br>Δ = 51° 04' 32" (RT)<br>D = 6° 08' 50"<br>R = 932.06'<br>T = 445.32'<br>L = 830.87'<br>E = 100.92'<br>e = 3.2%<br>T.R. = 55<br>S.E. RUN = 84<br>P.C. STA. = 671+34.51<br>P.T. STA. = 679+65.38 | PR CURVE WAUKEGAN-01<br>PI STA. = 521+99.85<br>Δ = 26° 12' 25" (LT)<br>D = 7° 11' 18"<br>R = 797.07'<br>T = 185.53'<br>L = 364.58'<br>E = 21.31'<br>e = 4%<br>T.R. = 71<br>S.E. RUN = 135<br>P.C. STA. = 520+14.31<br>P.T. STA. = 523+78.89 | PR CURVE FOXMEADOW-01<br>PI STA. = 21+33.60<br>Δ = 77° 19' 29" (LT)<br>D = 63° 39' 43"<br>R = 90.00'<br>T = 72.01'<br>L = 121.46'<br>E = 25.26'<br>P.C. STA. = 20+61.59<br>P.T. STA. = 21+83.05 |
|---|---|---|

MATCH LINE STATION 684+00  
 SEE SHEET NO. 52

|  |                     |                   |           |
|--|---------------------|-------------------|-----------|
| FILE NAME =                                  | USER NAME = BAW:ort | DESIGNED - JLV    | REVISED - |
| g:\ch11\0158\road\Sheets\0160T35-SHT-AT1.dgn |                     | DRAWN - KAL       | REVISED - |
| PLOT SCALE = 500.000' / in.                  |                     | CHECKED - RCB     | REVISED - |
| PLOT DATE = 11/1/2012                        |                     | DATE - 10/31/2012 | REVISED - |

**STATE OF ILLINOIS  
 DEPARTMENT OF TRANSPORTATION**

**ALIGNMENT, TIES AND BENCHMARKS**

SCALE: 1" = 250' SHEET NO. 51 OF 919 SHEETS

|   |                              |        |                    |           |
|---|------------------------------|--------|--------------------|-----------|
| F.A.P. RTE.                                     | SECTION                      | COUNTY | TOTAL SHEETS       | SHEET NO. |
| 305   | (1920.01,1518,2022&1922.4)BR | COOK   | 919                | 51        |
| FED. ROAD DIST. NO. 1 ILLINOIS FED. AID PROJECT |                              |        | CONTRACT NO. 60T35 |           |