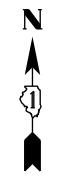
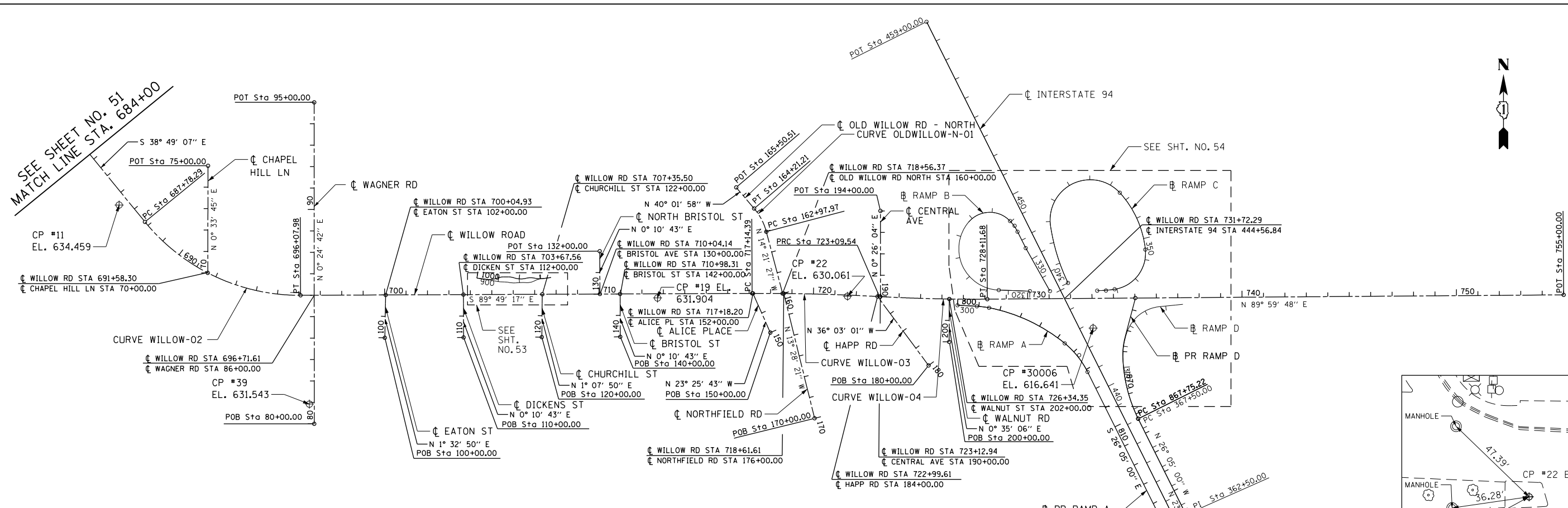


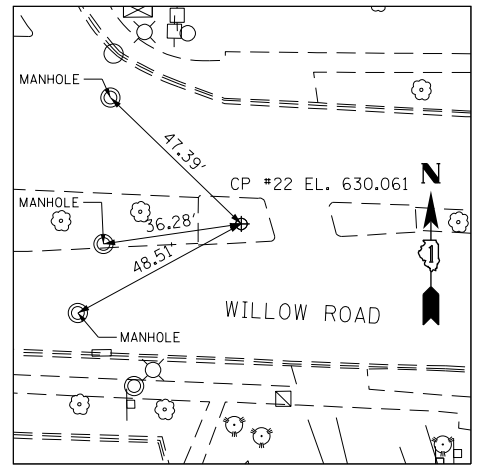
SEE SHEET NO. 51
MATCH LINE STA. 684+00



PR CURVE WILLOW-02 PI STA. = 692+22.89 Δ = 51° 00' 10" (LT) D = 6° 08' 50" R = 932.06' T = 444.60' L = 829.69' E = 100.61' e = 3.2% T.R. = 55 S.E. RUN = 84 P.C. STA. = 687+78.29 P.T. STA. = 696+07.98	PR CURVE WILLOW-03 PI STA. = 720+12.05 Δ = 3° 22' 14" (RT) D = 0° 33' 59" R = 10,117.00' T = 297.66' L = 595.14' E = 4.38' e = NC P.C. STA. = 717+14.39 P.T. STA. = 723+09.54	PR CURVE WILLOW-04 PI STA. = 725+60.69 Δ = 3° 33' 09" (LT) D = 0° 42' 27" R = 8,098.70' T = 251.15' L = 502.15' E = 3.89' e = NC P.C. STA. = 723+09.54 P.T. STA. = 728+11.68	PR CURVE OLDWILLOW-N-01 PI STA. = 163+60.64 Δ = 25° 40' 31" (LT) D = 20° 50' 05" R = 275.00' T = 62.67' L = 123.23' E = 7.05' P.C. STA. = 162+97.97 P.T. STA. = 164+21.21
---------------------------------------------------------------------------------------------------------------------------------------------------------------------------------------------------------------------------------------------	-------------------------------------------------------------------------------------------------------------------------------------------------------------------------------------------------------------	------------------------------------------------------------------------------------------------------------------------------------------------------------------------------------------------------------	------------------------------------------------------------------------------------------------------------------------------------------------------------------------------------------------------

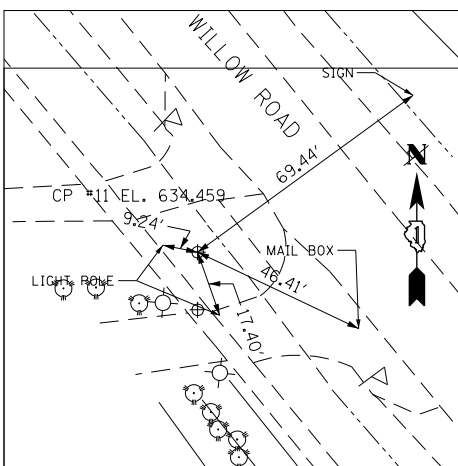
BENCHMARK 1U

ELEV. 633.16
CUT "X" IN SOUTH EAST CORNER OF HANDRAIL (S.W. LEVEL) AT NORTH EAST CORNER OF WILLOW RD BRIDGE OVER MIDDLE FORK OF NORTH CHICAGO RIVER



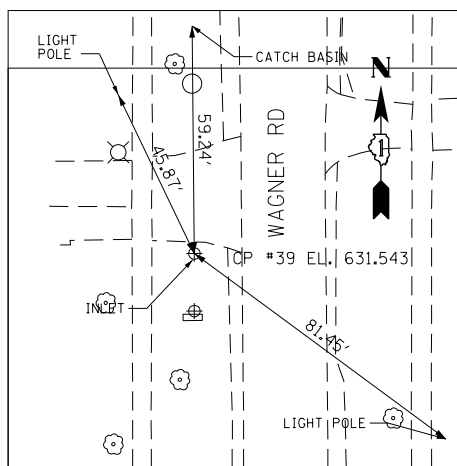
CONTROL POINT #22

CUT "X" ± 8' WEST OF EAST EDGE OF ISLAND IN FRONT OF WALGREENS ± 150' WEST OF CENTRAL AVE AND HAPP RD.
STA 721+59.3890 5,5317' RT
N 1,980,074.561 E 1,136,750.1040



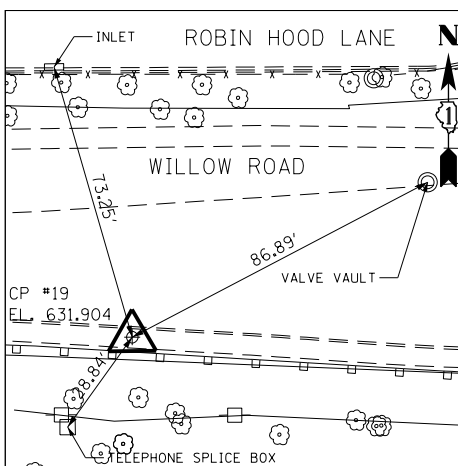
CONTROL POINT #11

CUT "X" IN C OF SIDEWALK JUST NORTH OF DRIVEWAY TO 2158 WILLOW ROAD
STA 686+40.9984 43,5751' RT
N 1,980,525.2720 E 1,133,355.8340



CONTROL POINT #39

CUT "X" ON CONCRETE BARREL FOR CATCH BASIN LOCATED IN FRONT OF RES. AT 320 WAGNER RD (SOUTH OF WILLOW RD).
STA 696+46.8673 507,8377' RT
N 1,979,589.8810 E 1,134,236.4450



CONTROL POINT #19

CUT "X" +/- 2' SOUTH OF SOUTH BACK OF CURB TO WILLOW ROAD & +/- 175' E OF C OF BRISTOL STREET
STA 712+72.9967 19,3993' RT
N 1,980,073.2390 E 1,135,864.0900



STATE OF ILLINOIS
DEPARTMENT OF TRANSPORTATION

ALIGNMENT, TIES AND BENCHMARKS

SCALE: 1" = 250' SHEET NO. 52 OF 919 SHEETS

FOR INTERSTATE 94 CONTROL POINT INFORMATION SEE SHEET 56

FILE NAME = g:\ch11\0158\road\Sheets\0160T35-SHT-AT82.dgn	USER NAME = BAW\ort	DESIGNED -	REVISED -	<table border="1"> <tr> <td>F.A.P. RTE.</td> <td>SECTION</td> <td>COUNTY</td> <td>TOTAL SHEETS</td> <td>SHEET NO.</td> </tr> <tr> <td>305</td> <td>(1920.01,1518,2022&1922,4BIR</td> <td>COOK</td> <td>919</td> <td>52</td> </tr> <tr> <td colspan="5">CONTRACT NO. 60T35</td> </tr> <tr> <td colspan="5">FED. ROAD DIST. NO. 1 ILLINOIS FED. AID PROJECT</td> </tr> </table>	F.A.P. RTE.	SECTION	COUNTY	TOTAL SHEETS	SHEET NO.	305	(1920.01,1518,2022&1922,4BIR	COOK	919	52	CONTRACT NO. 60T35					FED. ROAD DIST. NO. 1 ILLINOIS FED. AID PROJECT				
F.A.P. RTE.	SECTION	COUNTY	TOTAL SHEETS		SHEET NO.																			
305	(1920.01,1518,2022&1922,4BIR	COOK	919		52																			
CONTRACT NO. 60T35																								
FED. ROAD DIST. NO. 1 ILLINOIS FED. AID PROJECT																								
PLOT SCALE = 500.000' / in.	CHECKED -	REVISED -	REVISED -																					
PLOT DATE = 11/1/2012	DATE = 10/31/2012	REVISED -	REVISED -																					