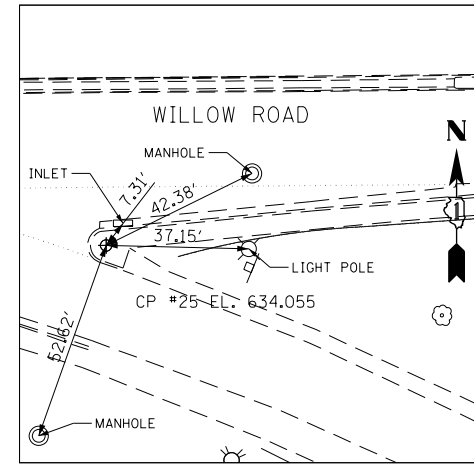


EX CURVE RAMP A-01  
 PI STA. = 301+19.22  
 $\Delta = 8^\circ 00' 01''$  (RT)  
 D = 14° 00' 31"  
 R = 409.00'  
 T = 28.60'  
 L = 57.11'  
 E = 1.00'  
 P.C. STA. = 300+90.62  
 P.T. STA. = 301+47.73

EX CURVE RAMP A-02  
 PI STA. = 303+49.02  
 $\Delta = 28^\circ 19' 07''$  (RT)  
 D = 7° 10' 52"  
 R = 797.87'  
 T = 201.29'  
 L = 394.35'  
 E = 25.00'  
 P.C. STA. = 301+47.73  
 P.T. STA. = 305+42.08

EX CURVE RAMP A-03  
 PI STA. = 306+29.16  
 $\Delta = 24^\circ 02' 20''$  (RT)  
 D = 14° 00' 31"  
 R = 409.00'  
 T = 87.08'  
 L = 171.60'  
 E = 9.17'  
 P.C. STA. = 305+42.08  
 P.T. STA. = 307+13.68



**CONTROL POINT #25**

CUT "X" AT SOUTHWEST CORNER OF BRIDGE OVER I-94 AT WESTERLY END OF SIDEWALK NEAR EASTBOUND WILLOW RD TO SOUTHBOUND I-94.  
 STA 729+26.8623 43.7139' RT  
 N 1,980,012.6630 E 1,137,517.2950

EX CURVE RAMP B-01  
 PI STA. = 325+39.43  
 $\Delta = 127^\circ 52' 43''$  (RT)  
 D = 29° 42' 42"  
 R = 192.84'  
 T = 394.32'  
 L = 430.40'  
 E = 246.11'  
 P.C. STA. = 321+45.11  
 P.T. STA. = 325+75.51

EX CURVE RAMP B-02  
 PI STA. = 327+21.91  
 $\Delta = 96^\circ 47' 25''$  (RT)  
 D = 44° 04' 25"  
 R = 130.00'  
 T = 146.40'  
 L = 219.61'  
 E = 65.79'  
 P.C. STA. = 325+75.51  
 P.T. STA. = 327+95.12

EX CURVE RAMP B-03  
 PI STA. = 328+26.04  
 $\Delta = 16^\circ 52' 50''$  (RT)  
 D = 27° 29' 59"  
 R = 208.35'  
 T = 30.92'  
 L = 61.38'  
 E = 2.28'  
 P.C. STA. = 327+95.12  
 P.T. STA. = 328+56.50

EX CURVE RAMP C-01  
 PI STA. = 341+41.43  
 $\Delta = 17^\circ 24' 08''$  (RT)  
 D = 6° 12' 00"  
 R = 924.12'  
 T = 141.43'  
 L = 280.68'  
 E = 10.76'  
 P.C. STA. = 340+00.00  
 P.T. STA. = 342+80.68

EX CURVE RAMP C-02  
 PI STA. = 348+87.20  
 $\Delta = 145^\circ 40' 51''$  (RT)  
 D = 30° 35' 37"  
 R = 187.28'  
 T = 606.52'  
 L = 476.18'  
 E = 447.49'  
 P.C. STA. = 342+80.68  
 P.T. STA. = 347+56.86

EX CURVE RAMP C-03  
 PI STA. = 349+10.12  
 $\Delta = 36^\circ 51' 09''$  (RT)  
 D = 12° 27' 20"  
 R = 460.00'  
 T = 153.26'  
 L = 295.87'  
 E = 24.86'  
 P.C. STA. = 347+56.86  
 P.T. STA. = 350+52.73

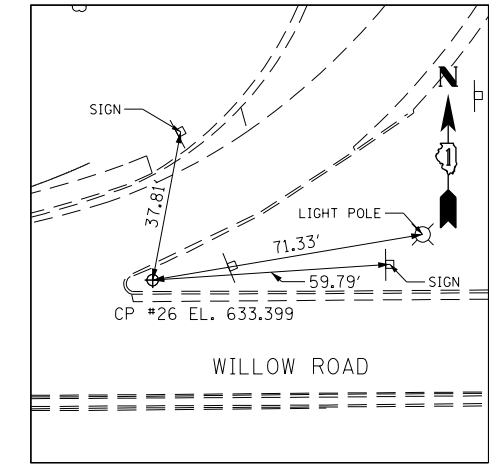
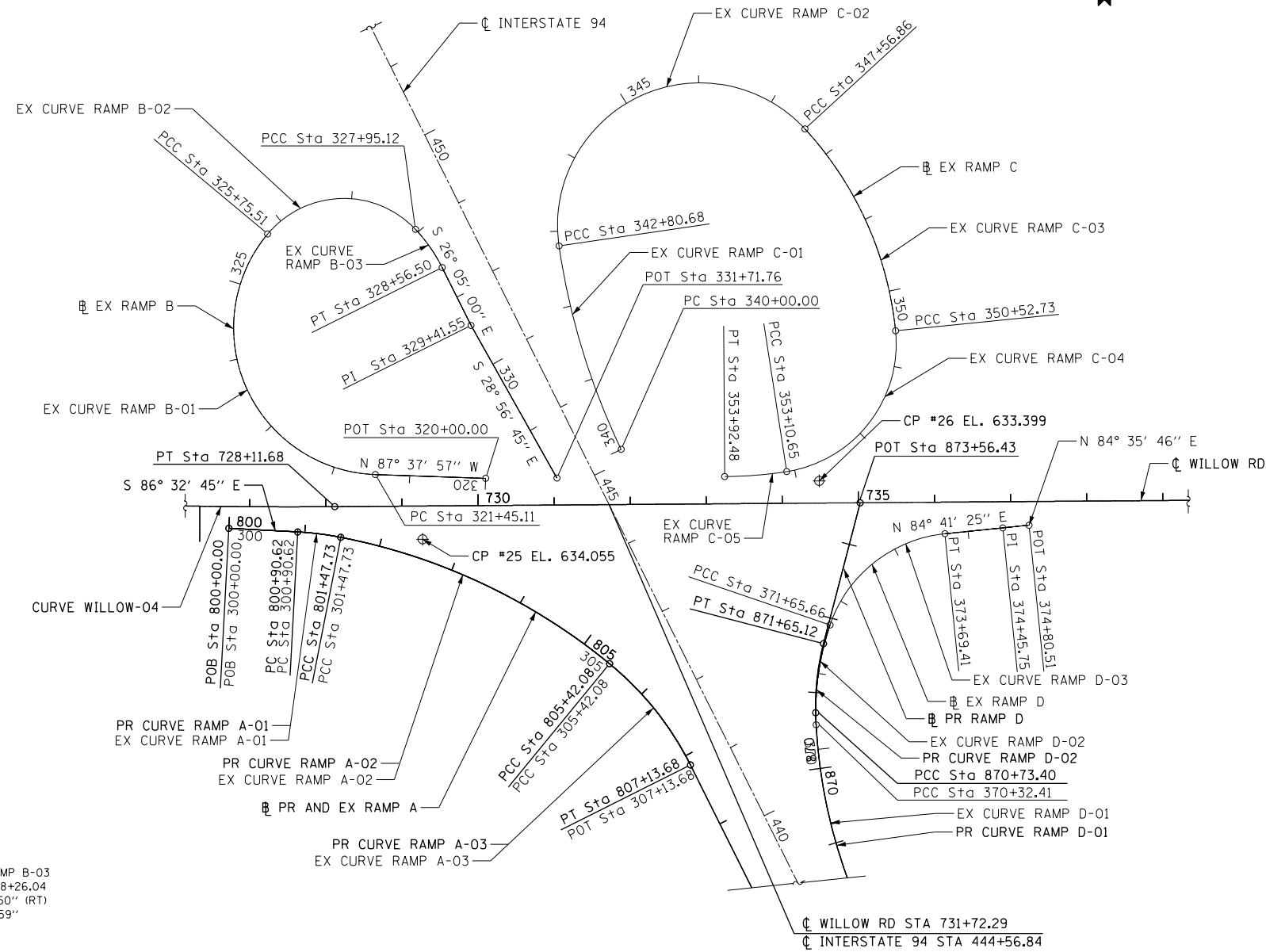
EX CURVE RAMP C-04  
 PI STA. = 352+13.85  
 $\Delta = 86^\circ 55' 40''$  (RT)  
 D = 33° 42' 12"  
 R = 170.00'  
 T = 161.12'  
 L = 257.92'  
 E = 64.22'  
 P.C. STA. = 350+52.73  
 P.T. STA. = 353+10.65

EX CURVE RAMP C-05  
 PI STA. = 353+51.64  
 $\Delta = 8^\circ 23' 13''$  (RT)  
 D = 10° 14' 57"  
 R = 559.03'  
 T = 40.99'  
 L = 81.83'  
 E = 1.50'  
 P.C. STA. = 353+10.65  
 P.T. STA. = 353+92.48

PR CURVE RAMP A-01  
 PI STA. = 801+19.22  
 $\Delta = 8^\circ 00' 01''$  (RT)  
 D = 14° 00' 31"  
 R = 409.00'  
 T = 28.60'  
 L = 57.11'  
 E = 1.00'  
 P.C. STA. = 800+90.62  
 P.T. STA. = 801+47.73

PR CURVE RAMP A-02  
 PI STA. = 803+49.02  
 $\Delta = 28^\circ 19' 07''$  (RT)  
 D = 7° 10' 52"  
 R = 797.87'  
 T = 201.29'  
 L = 394.35'  
 E = 25.00'  
 P.C. STA. = 801+47.73  
 P.T. STA. = 805+42.08

PR CURVE RAMP A-03  
 PI STA. = 806+29.16  
 $\Delta = 24^\circ 02' 20''$  (RT)  
 D = 14° 00' 31"  
 R = 409.00'  
 T = 87.08'  
 L = 171.60'  
 E = 9.17'  
 P.C. STA. = 805+42.08  
 P.T. STA. = 807+13.68



**CONTROL POINT #26**

CUT "X" ON SIDEWALK NORTH SIDE WILLOW RD END OF OFF RAMP FROM I-94 NORTHBOUND TO WILLOW RD WESTBOUND ± 20' WEST OF SIGN "DO NOT ENTER"  
 STA 734+48.6665 29.1489' LT  
 N 1,980,085.5560 E 1,138,039.0950

PR CURVE RAMP D-01  
 PI STA. = 869+26.67  
 $\Delta = 24^\circ 43' 28''$  (RT)  
 D = 8° 17' 30"  
 R = 691.00'  
 T = 151.45'  
 L = 298.18'  
 E = 16.40'  
 e = 6.00%  
 T.R. = SEE SHEET NO. 271  
 S.E. RUN = SEE SHEET NO. 271  
 P.C. STA. = 867+75.22  
 P.T. STA. = 870+73.40

PR CURVE RAMP D-02  
 PI STA. = 871+19.57  
 $\Delta = 16^\circ 14' 57''$  (RT)  
 D = 17° 43' 03"  
 R = 323.38'  
 T = 46.17'  
 L = 91.71'  
 E = 3.28'  
 e = 6.00%  
 T.R. = SEE SHEET NO. 271  
 S.E. RUN = SEE SHEET NO. 271  
 P.C. STA. = 870+73.40  
 P.T. STA. = 871+65.12

EX CURVE RAMP D-01  
 PI STA. = 368+93.21  
 $\Delta = 23^\circ 25' 00''$  (RT)  
 D = 8° 17' 30"  
 R = 691.00'  
 T = 143.20'  
 L = 282.41'  
 E = 14.68'  
 P.C. STA. = 367+50.00  
 P.T. STA. = 370+32.41

EX CURVE RAMP D-02  
 PI STA. = 370+99.85  
 $\Delta = 21^\circ 48' 48''$  (RT)  
 D = 16° 22' 13"  
 R = 350.00'  
 T = 67.44'  
 L = 133.25'  
 E = 6.44'  
 P.C. STA. = 370+32.41  
 P.T. STA. = 371+65.66

EX CURVE RAMP D-03  
 PI STA. = 372+80.27  
 $\Delta = 65^\circ 26' 14''$  (RT)  
 D = 32° 06' 59"  
 R = 178.40'  
 T = 114.61'  
 L = 203.75'  
 E = 33.64'  
 P.C. STA. = 371+65.66  
 P.T. STA. = 373+69.41

FILE NAME =	USER NAME = BAW\rtort	DESIGNED -	REVISED -
g:\ch11\0158\road\Sheets\0160T35-SHT-ATB4.dgn		DRAWN -	REVISED -
	PLOT SCALE = 200.000' / in.	CHECKED -	REVISED -
	PLOT DATE = 11/1/2012	DATE - 10/31/2012	REVISED -

**STATE OF ILLINOIS  
 DEPARTMENT OF TRANSPORTATION**

**ALIGNMENT, TIES AND BENCHMARKS**

SCALE: 1" = 100' SHEET NO. 54 OF 919 SHEETS

F.A.P. RTE.	SECTION	COUNTY	TOTAL SHEETS	SHEET NO.
305	(1920.01,1518,2022&1922,4BIR	COOK	919	54
FED. ROAD DIST. NO. 1 ILLINOIS FED. AID PROJECT			CONTRACT NO. 60T35	