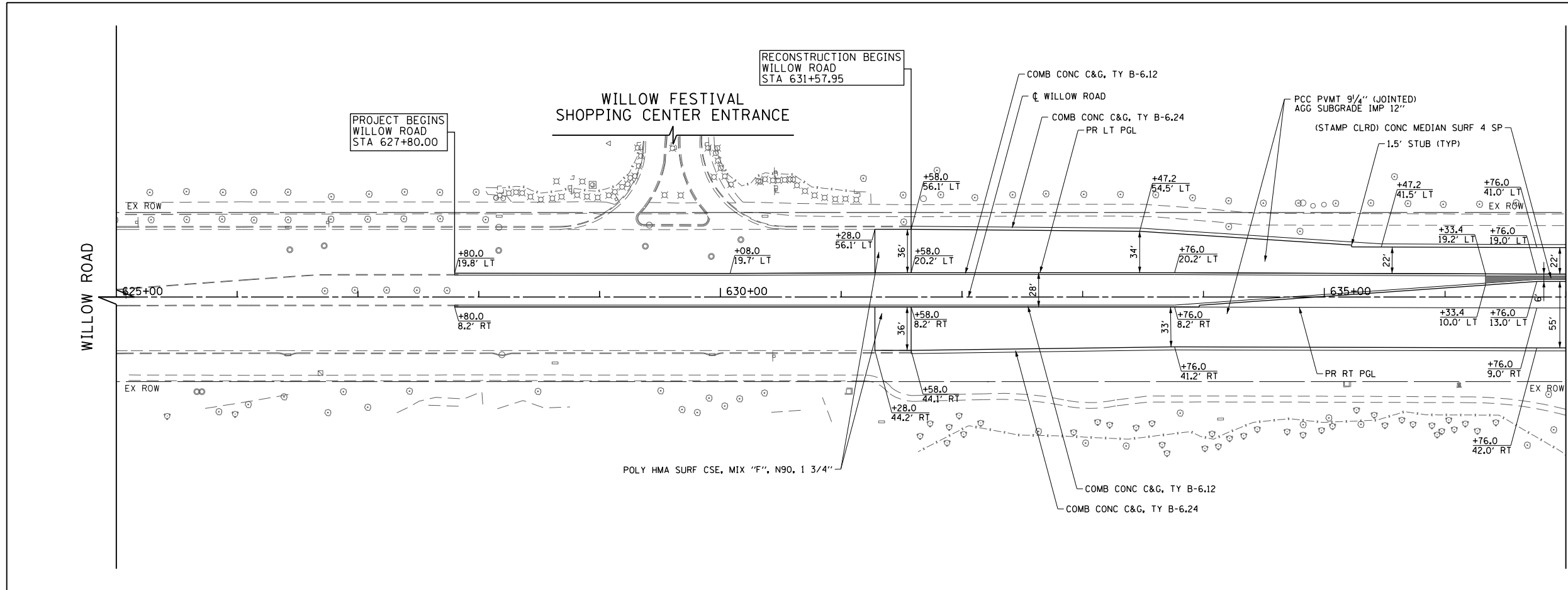


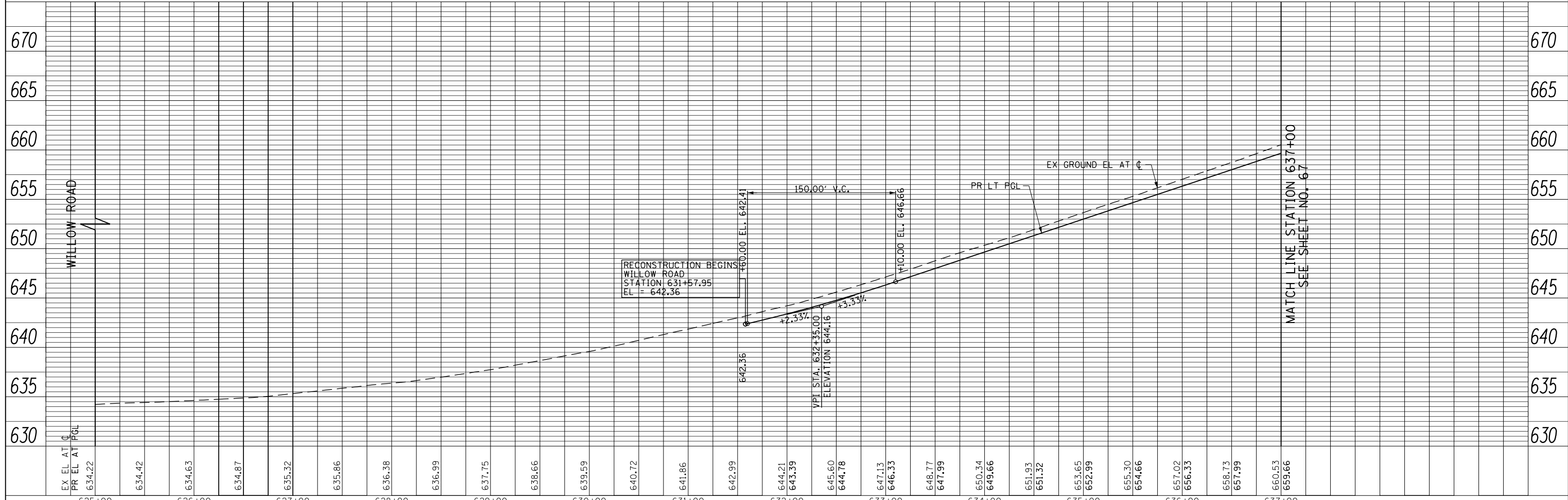
PLAN	SURVEYED	BY	DATE
	PLOTTED		
	CHECKED		
	ALIGNED		
	FILE NAME		
	NO.		

PROFILE	SURVEYED	BY	DATE
	GRADES CHECKED		
	STRUCTURE		
	NOTATIONS CHK'D		
	NO.		



MATCH LINE STATION 637+00  
SEE SHEET NO. 67

- NOTES:**
- FOR SUNSET RIDGE ROAD PLAN AND PROFILE SEE SHEET NO. 79
  - FOR WAGNER ROAD PLAN AND PROFILE SEE SHEET NO. 80
  - FOR INTERSTATE 94 RAMP A AND RAMP D PLAN AND PROFILE SEE SHEET NO. 81 TO 84
  - FOR SOMERSET LANE / OLD WILLOW ROAD PLAN SEE SHEET NO. 99
  - FOR SIDEWALK AND DRIVEWAY PLANS SEE SHEET NO. 94 TO 98
  - FOR INTERSECTION AND INTERSTATE 94 RAMP AND AUXILIARY LANE PAVING PLANS SEE SHEET NO. 264 TO 275
  - FOR PEDESTRIAN REFUGE ISLAND, ISLAND, CURB AND GUTTER TRANSITION, AND MEDIAN TRANSITION DETAILS SEE SHEET NO. 101 TO 103
  - FOR PROPOSED RIGHT PGL PROFILE SEE SHEET NO. 85 TO 90
  - THE GENERAL CONTRACTOR IS REQUIRED TO HIRE AN ENVIRONMENTAL FIRM WITH AT LEAST FIVE (5) DOCUMENTED LEAKING UNDERGROUND STORAGE TANK CLEANUPS OR THAT IS PRE-QUALIFIED IN HAZARDOUS WASTE BY THE DEPARTMENT TO REMEDIATE THE SOIL CONTAMINATION AND MONITOR FOR WORKER PROTECTION.



MATCH LINE STATION 637+00  
SEE SHEET NO. 67

FILE NAME =	USER NAME = BAW:ort	DESIGNED - JLV	REVISED -	<p align="center"><b>STATE OF ILLINOIS</b> <b>DEPARTMENT OF TRANSPORTATION</b></p> <p align="center"><b>WILLOW ROAD PLAN AND PROFILE</b></p>	F.A.P. RTE.	SECTION	COUNTY	TOTAL SHEETS	SHEET NO.
g:\ch11\0158\road\Sheets\160135-SHT-PLNPRF-01.dgn		DRAWN - KAL	REVISED -		305	(1920.01,1518,2022&1922,4BR)	COOK	919	66
PLOT SCALE = 100.000' / in.		CHECKED - RCB	REVISED -		CONTRACT NO. 60T35				
PLOT DATE = 11/28/2012		DATE - 10/31/2012	REVISED -		FED. ROAD DIST. NO. 1 ILLINOIS FED. AID PROJECT				

SCALE: HORIZ: 1"=50'  
VERT: 1"=5'  
SHEET NO. 66 OF 919 SHEETS STA. 625+00 TO STA. 637+00