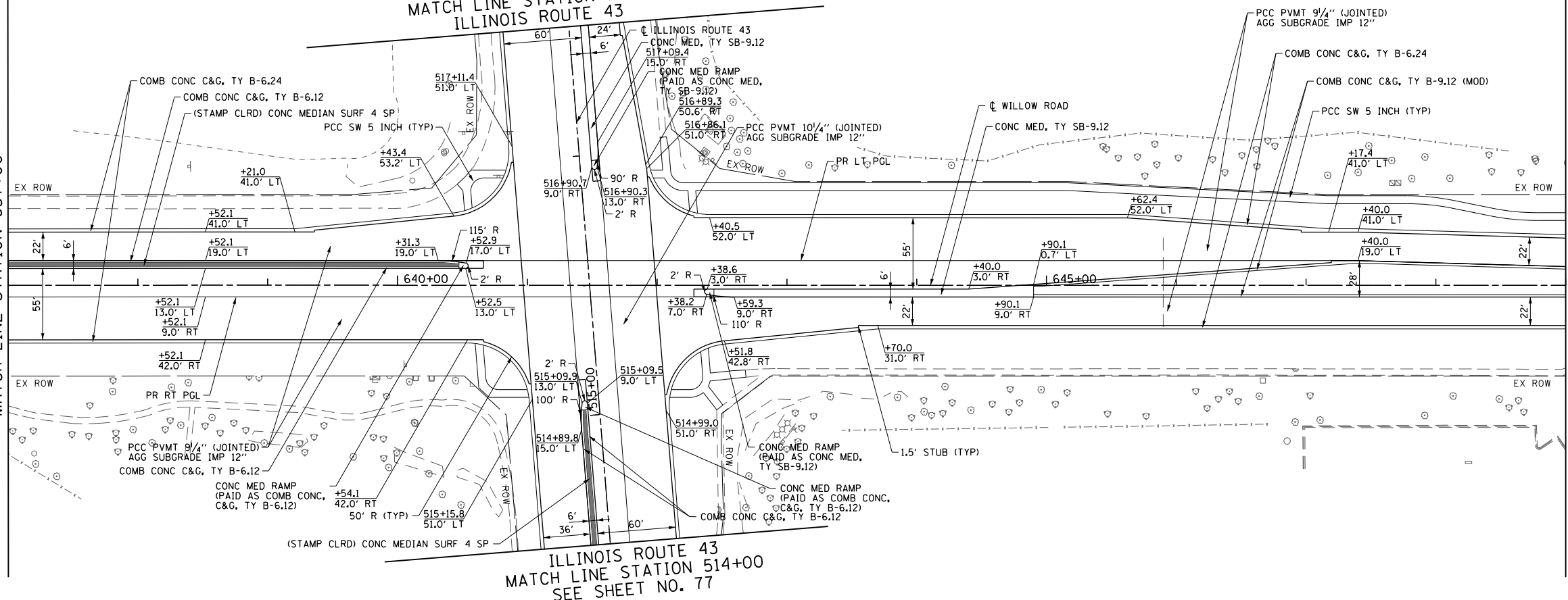


SEE SHEET NO. 78
MATCH LINE STATION 518+00
ILLINOIS ROUTE 43



SEE SHEET NO. 66
MATCH LINE STATION 637+00

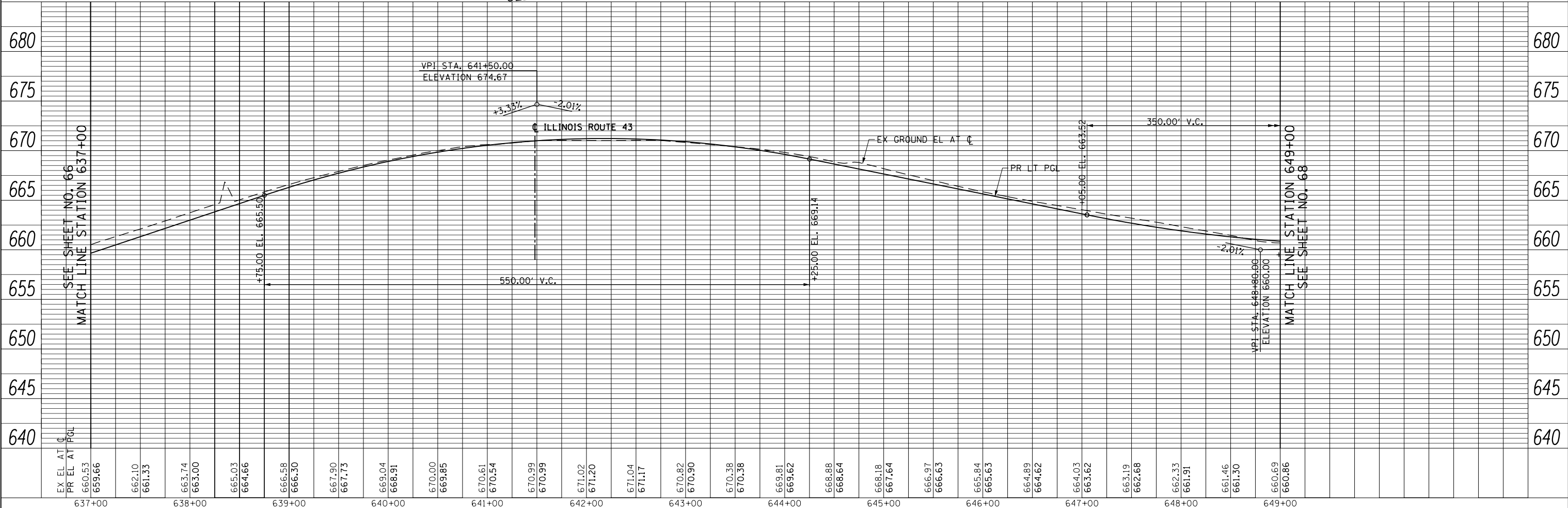
MATCH LINE STATION 649+00
SEE SHEET NO. 68



- NOTES:
- FOR SUNSET RIDGE ROAD PLAN AND PROFILE SEE SHEET NO. 79
 - FOR WAGNER ROAD PLAN AND PROFILE SEE SHEET NO. 80
 - FOR INTERSTATE 94 RAMP A AND RAMP D PLAN AND PROFILE SEE SHEET NO. 81 TO 84
 - FOR SOMERSET LANE / OLD WILLOW ROAD PLAN SEE SHEET NO. 99
 - FOR SIDEWALK AND DRIVEWAY PLANS SEE SHEET NO. 94 TO 98
 - FOR INTERSECTION AND INTERSTATE 94 RAMP AND AUXILIARY LANE PAVING PLANS SEE SHEET NO. 264 TO 275
 - FOR PEDESTRIAN REFUGE ISLAND, ISLAND, CURB AND GUTTER TRANSITION, AND MEDIAN TRANSITION DETAILS SEE SHEET NO. 101 TO 103
 - FOR PROPOSED RIGHT PGL PROFILE SEE SHEET NO. 85 TO 90
 - THE GENERAL CONTRACTOR IS REQUIRED TO HIRE AN ENVIRONMENTAL FIRM WITH AT LEAST FIVE (5) DOCUMENTED LEAKING UNDERGROUND STORAGE TANK CLEANUPS OR THAT IS PRE-QUALIFIED IN HAZARDOUS WASTE BY THE DEPARTMENT TO REMEDIATE THE SOIL CONTAMINATION AND MONITOR FOR WORKER PROTECTION.

PLAN	SURVEYED	DATE
NOTE BOOK	PLOTTED	BY
NO.	CHECKED	
	FILE NAME	

PROFILE	SURVEYED	DATE
NOTE BOOK	GRADES CHECKED	BY
NO.	STRUCTURE	
	NOTATIONS CHKD	



FILE NAME =	USER NAME = BAW:ort	DESIGNED - JLV	REVISED -	F.A.P. RTE.	SECTION	COUNTY	TOTAL SHEETS	SHEET NO.
g:\ch11\158\road\Sheets\160T35-SHT-PLNPRF-02.dgn		DRAWN - KAL	REVISED -	305	(1920.01,1518,2022&1922,4BR)	COOK	919	67
PLOT SCALE = 100.000' / in.		CHECKED - RCB	REVISED -	CONTRACT NO. 60T35				
PLOT DATE = 11/28/2012		DATE - 10/31/2012	REVISED -	FED. ROAD DIST. NO. 1 ILLINOIS FED. AID PROJECT				

STATE OF ILLINOIS
DEPARTMENT OF TRANSPORTATION

WILLOW ROAD PLAN AND PROFILE

SCALE: HORIZ: 1"=50'
VERT: 1"=5'
SHEET NO. 67 OF 919 SHEETS STA. 637+00 TO STA. 649+00