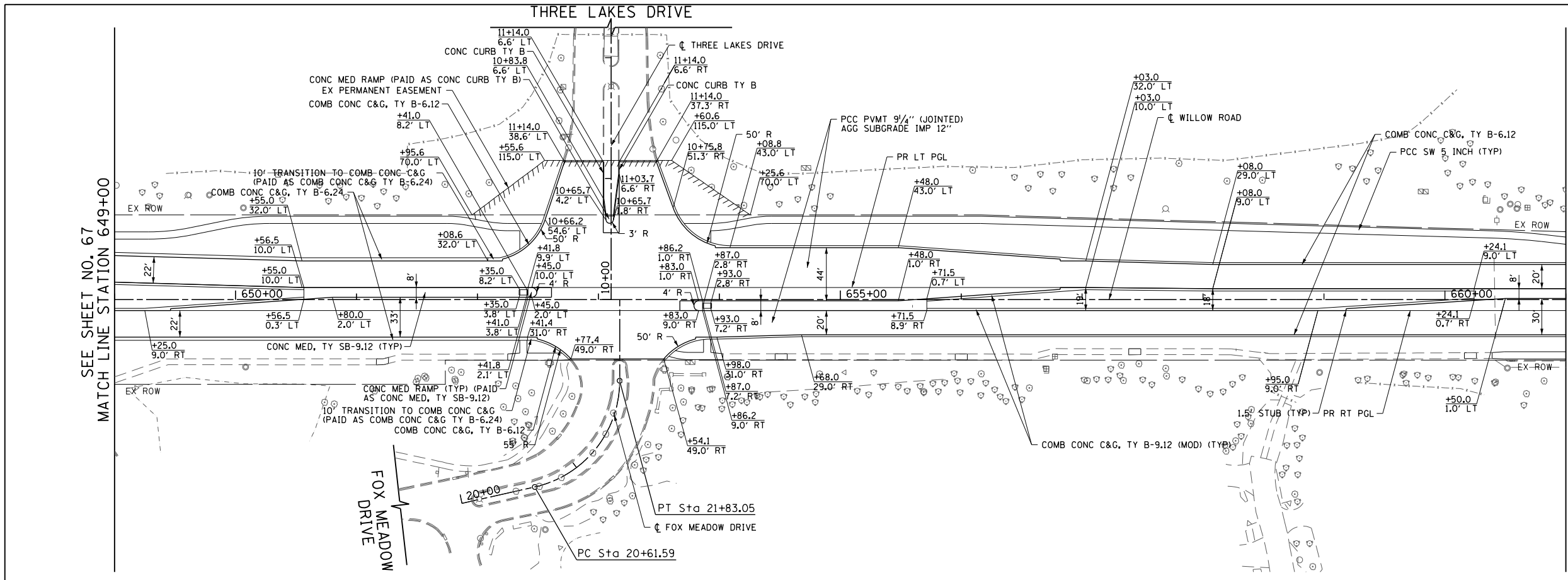


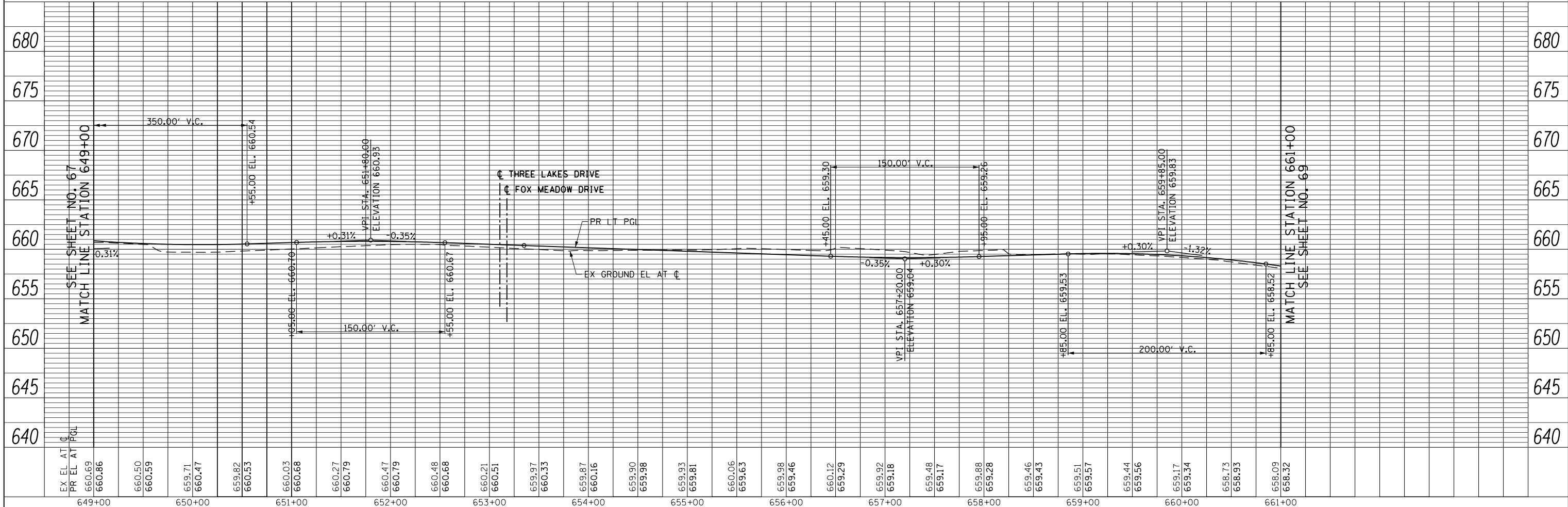
| | | |
|------|-----------|------|
| PLAN | SURVEYED | DATE |
| | PLOTTED | BY |
| | CHECKED | |
| | NO. _____ | |
| | FILE NAME | |

| | | |
|---------|-----------|------|
| PROFILE | SURVEYED | DATE |
| | PLOTTED | BY |
| | CHECKED | |
| | NO. _____ | |
| | FILE NAME | |



MATCH LINE STATION 661+00
SEE SHEET NO. 69

- NOTES:
- FOR SUNSET RIDGE ROAD PLAN AND PROFILE SEE SHEET NO. 79
 - FOR WAGNER ROAD PLAN AND PROFILE SEE SHEET NO. 80
 - FOR INTERSTATE 94 RAMP A AND RAMP D PLAN AND PROFILE SEE SHEET NO. 81 TO 84
 - FOR SOMERSET LANE / OLD WILLOW ROAD PLAN SEE SHEET NO. 99
 - FOR SIDEWALK AND DRIVEWAY PLANS SEE SHEET NO. 94 TO 98
 - FOR INTERSECTION AND INTERSTATE 94 RAMP AND AUXILIARY LANE PAVING PLANS SEE SHEET NO. 264 TO 275
 - FOR PEDESTRIAN REFUGE ISLAND, ISLAND, CURB AND GUTTER TRANSITION, AND MEDIAN TRANSITION DETAILS SEE SHEET NO. 101 TO 103
 - FOR PROPOSED RIGHT PGL PROFILE SEE SHEET NO. 85 TO 90
 - THE GENERAL CONTRACTOR IS REQUIRED TO HIRE AN ENVIRONMENTAL FIRM WITH AT LEAST FIVE (5) DOCUMENTED LEAKING UNDERGROUND STORAGE TANK CLEANUPS OR THAT IS PRE-QUALIFIED IN HAZARDOUS WASTE BY THE DEPARTMENT TO REMEDIATE THE SOIL CONTAMINATION AND MONITOR FOR WORKER PROTECTION.



MATCH LINE STATION 661+00
SEE SHEET NO. 69

| | | | | | | | | |
|--|---------------------|-------------------|-----------|---|------------------------------|--------|--------------|-----------|
| FILE NAME = | USER NAME = BAW:ort | DESIGNED - JLV | REVISED - | F.A.P. RTE. | SECTION | COUNTY | TOTAL SHEETS | SHEET NO. |
| g:\ch11\0158\road\Sheets\160135-SHT-PLN\PRF-03.dgn | | DRAWN - KAL | REVISED - | 305 | (1920.01,1518,2022&1922,4BR) | COOK | 919 | 68 |
| PLOT SCALE = 100.000' / in. | | CHECKED - RCB | REVISED - | CONTRACT NO. 60T35 | | | | |
| PLOT DATE = 11/28/2012 | | DATE - 10/31/2012 | REVISED - | FED. ROAD DIST. NO. 1 ILLINOIS FED. AID PROJECT | | | | |

STATE OF ILLINOIS
DEPARTMENT OF TRANSPORTATION

WILLOW ROAD PLAN AND PROFILE

SCALE: HORIZ: 1"=50'
VERT: 1"=5'
SHEET NO. 68 OF 919 SHEETS
STA. 649+00 TO STA. 661+00