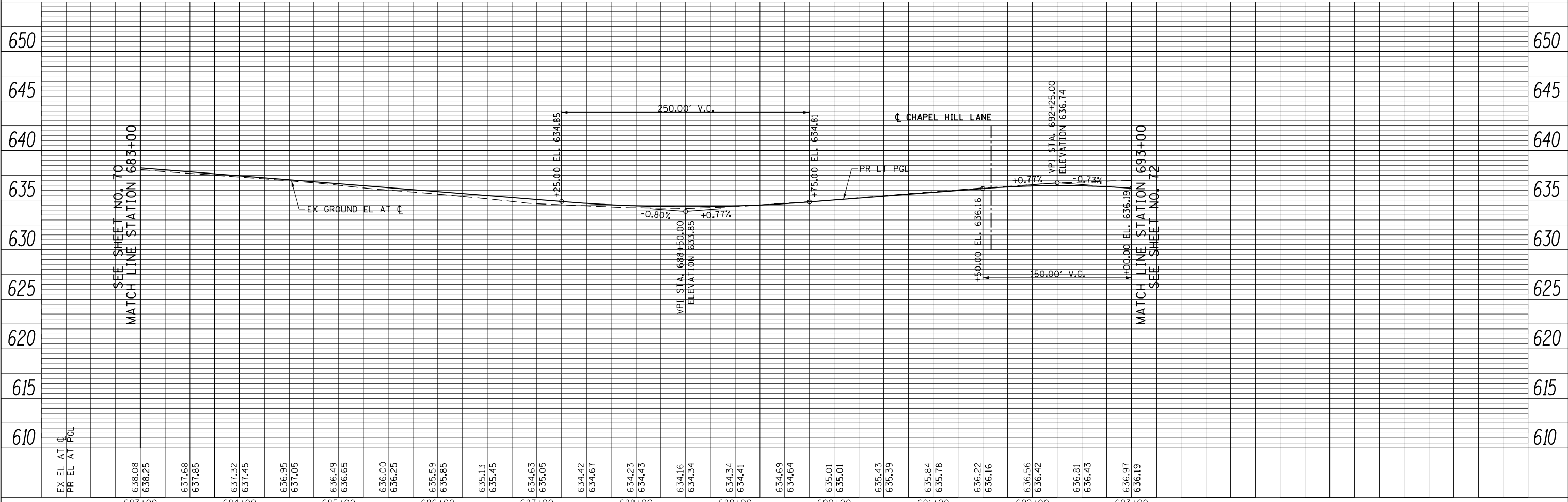
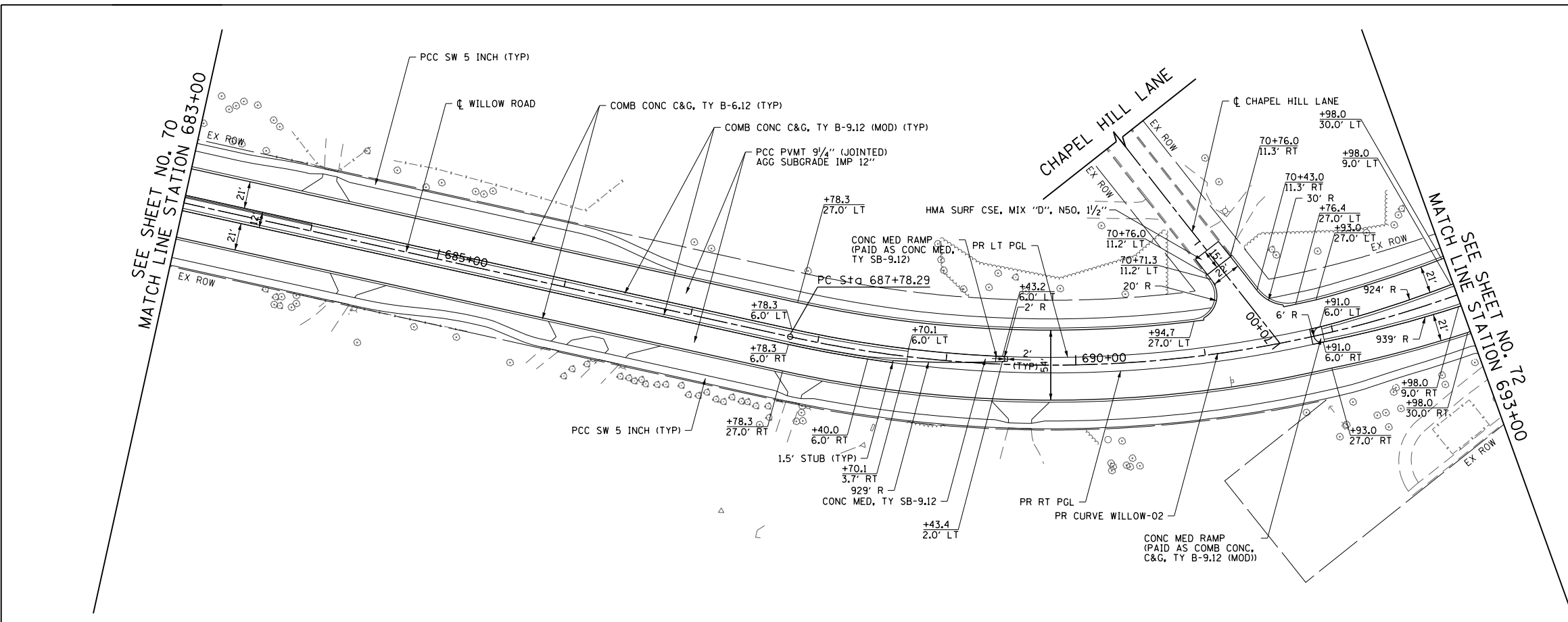


PLAN	SURVEYED	BY	DATE
	PLOTTED		
	GRADES CHECKED		
	STRUCTURE NOTATIONS CHECKED		
	NOTE BOOK NO.		
	CADD FILE NAME		

PROFILE	SURVEYED	BY	DATE
	PLOTTED		
	GRADES CHECKED		
	STRUCTURE NOTATIONS CHECKED		
	NOTE BOOK NO.		
	CADD FILE NAME		

PR CURVE WILLOW-02
 PI STA. = 692+22.89
 $\Delta = 51^\circ 00' 10''$ (LT)
 D = 6° 08' 50''
 R = 932.06'
 T = 444.60'
 L = 829.69'
 E = 100.61'
 e = 3.2%
 T.R. = 55
 S.E. RUN = 84
 P.C. STA. = 687+78.29
 P.T. STA. = 696+07.98

- NOTES:**
- FOR SUNSET RIDGE ROAD PLAN AND PROFILE SEE SHEET NO. 79
 - FOR WAGNER ROAD PLAN AND PROFILE SEE SHEET NO. 80
 - FOR INTERSTATE 94 RAMP A AND RAMP D PLAN AND PROFILE SEE SHEET NO. 81 TO 84
 - FOR SOMERSET LANE / OLD WILLOW ROAD PLAN SEE SHEET NO. 99
 - FOR SIDEWALK AND DRIVEWAY PLANS SEE SHEET NO. 94 TO 98
 - FOR INTERSECTION AND INTERSTATE 94 RAMP AND AUXILIARY LANE PAVING PLANS SEE SHEET NO. 264 TO 275
 - FOR PEDESTRIAN REFUGE ISLAND, ISLAND, CURB AND GUTTER TRANSITION, AND MEDIAN TRANSITION DETAILS SEE SHEET NO. 101 TO 103
 - FOR PROPOSED RIGHT PGL PROFILE SEE SHEET NO. 85 TO 90
 - THE GENERAL CONTRACTOR IS REQUIRED TO HIRE AN ENVIRONMENTAL FIRM WITH AT LEAST FIVE (5) DOCUMENTED LEAKING UNDERGROUND STORAGE TANK CLEANUPS OR THAT IS PRE-QUALIFIED IN HAZARDOUS WASTE BY THE DEPARTMENT TO REMEDIATE THE SOIL CONTAMINATION AND MONITOR FOR WORKER PROTECTION.



FILE NAME =	USER NAME = BAW:ort	DESIGNED - JLV	REVISED -
g:\ch11\0158\road\Sheets\160T35-SHT-PLNPRF-06.dgn		DRAWN - KAL	REVISED -
PLOT SCALE = 100.000' / in.		CHECKED - RCB	REVISED -
PLOT DATE = 11/28/2012		DATE - 10/31/2012	REVISED -

STATE OF ILLINOIS
 DEPARTMENT OF TRANSPORTATION

WILLOW ROAD PLAN AND PROFILE

SCALE: HORIZ: 1"=50'
 VERT: 1"=5'
 SHEET NO. 71 OF 919 SHEETS STA. 683+00 TO STA. 693+00

F.A.P. RTE.	SECTION	COUNTY	TOTAL SHEETS	SHEET NO.
305	(1920.01,1518,2022&1922.4)BR	COOK	919	71
CONTRACT NO. 60T35				
FED. ROAD DIST. NO. 1 ILLINOIS FED. AID PROJECT				