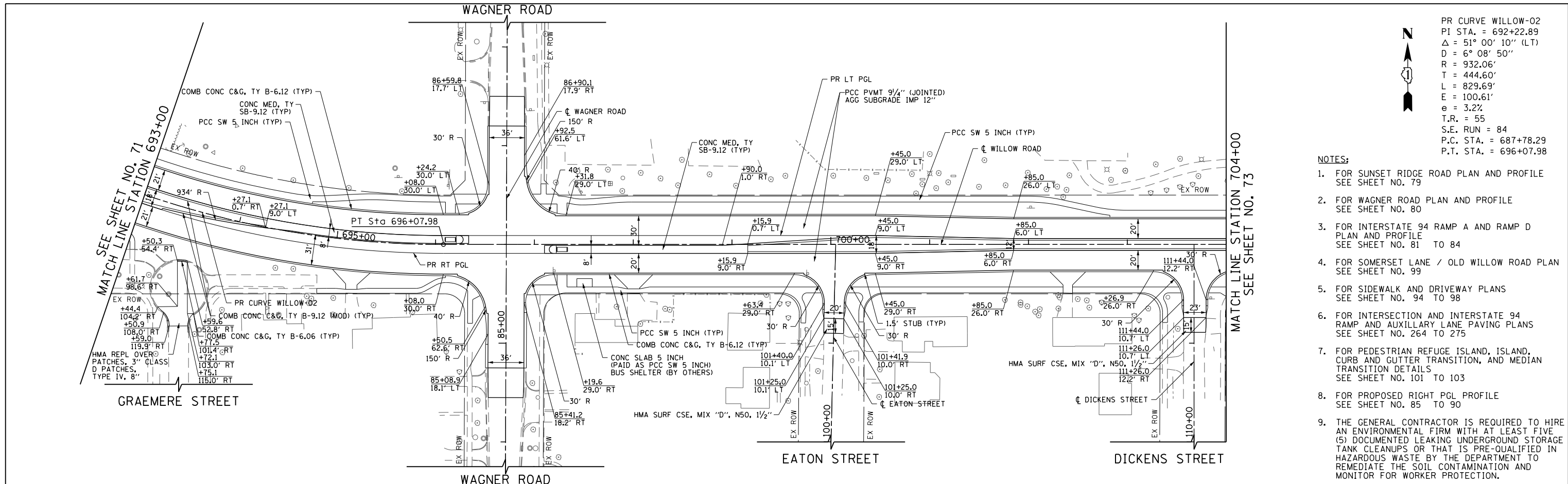


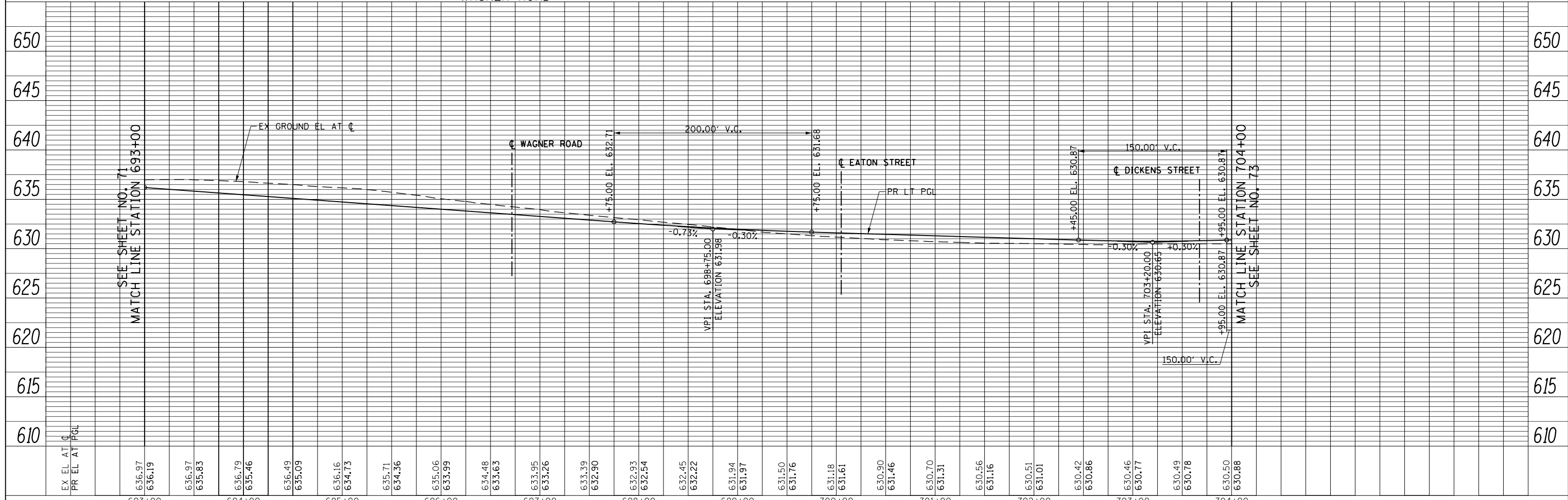
PLAN	SURVEYED	DATE
NOTE BOOK	PLOTTED	BY
NO.	CHECKED	
	FILE NAME	

PROFILE	SURVEYED	DATE
NOTE BOOK	PLOTTED	BY
NO.	CHECKED	
	FILE NAME	



PR CURVE WILLOW-02
 PI STA. = 692+22.89
 $\Delta = 51^\circ 00' 10''$ (LT)
 D = 6° 08' 50''
 R = 932.06'
 T = 444.60'
 L = 829.69'
 E = 100.61'
 e = 3.2%
 T.R. = 55
 S.E. RUN = 84
 P.C. STA. = 687+78.29
 P.T. STA. = 696+07.98

- NOTES:**
- FOR SUNSET RIDGE ROAD PLAN AND PROFILE SEE SHEET NO. 79
 - FOR WAGNER ROAD PLAN AND PROFILE SEE SHEET NO. 80
 - FOR INTERSTATE 94 RAMP A AND RAMP D PLAN AND PROFILE SEE SHEET NO. 81 TO 84
 - FOR SOMERSET LANE / OLD WILLOW ROAD PLAN SEE SHEET NO. 99
 - FOR SIDEWALK AND DRIVEWAY PLANS SEE SHEET NO. 94 TO 98
 - FOR INTERSECTION AND INTERSTATE 94 RAMP AND AUXILIARY LANE PAVING PLANS SEE SHEET NO. 264 TO 275
 - FOR PEDESTRIAN REFUGE ISLAND, ISLAND, CURB AND GUTTER TRANSITION, AND MEDIAN TRANSITION DETAILS SEE SHEET NO. 101 TO 103
 - FOR PROPOSED RIGHT PGL PROFILE SEE SHEET NO. 85 TO 90
 - THE GENERAL CONTRACTOR IS REQUIRED TO HIRE AN ENVIRONMENTAL FIRM WITH AT LEAST FIVE (5) DOCUMENTED LEAKING UNDERGROUND STORAGE TANK CLEANUPS OR THAT IS PRE-QUALIFIED IN HAZARDOUS WASTE BY THE DEPARTMENT TO REMEDIATE THE SOIL CONTAMINATION AND MONITOR FOR WORKER PROTECTION.



FILE NAME =	USER NAME = BAW:ort	DESIGNED - JLV	REVISED -	STATE OF ILLINOIS DEPARTMENT OF TRANSPORTATION	WILLOW ROAD PLAN AND PROFILE	F.A.P. RTE.	SECTION	COUNTY	TOTAL SHEETS	SHEET NO.	
g:\ch11\158\road\Sheets\1610135-SHT-PLNPRF-07.dgn		DRAWN - KAL	REVISED -			305	(1920.01,1518,2022&1922,4)BR	COOK	919	72	
PLOT SCALE = 100.000' / in.		CHECKED - RCB	REVISED -			CONTRACT NO. 60T35					
PLOT DATE = 11/28/2012		DATE - 10/31/2012	REVISED -			FED. ROAD DIST. NO. 1 ILLINOIS FED. AID PROJECT					

SCALE: HORIZ. 1"=50'
 VER. 1"=5'
 SHEET NO. 72 OF 919 SHEETS
 STA. 693+00 TO STA. 704+00