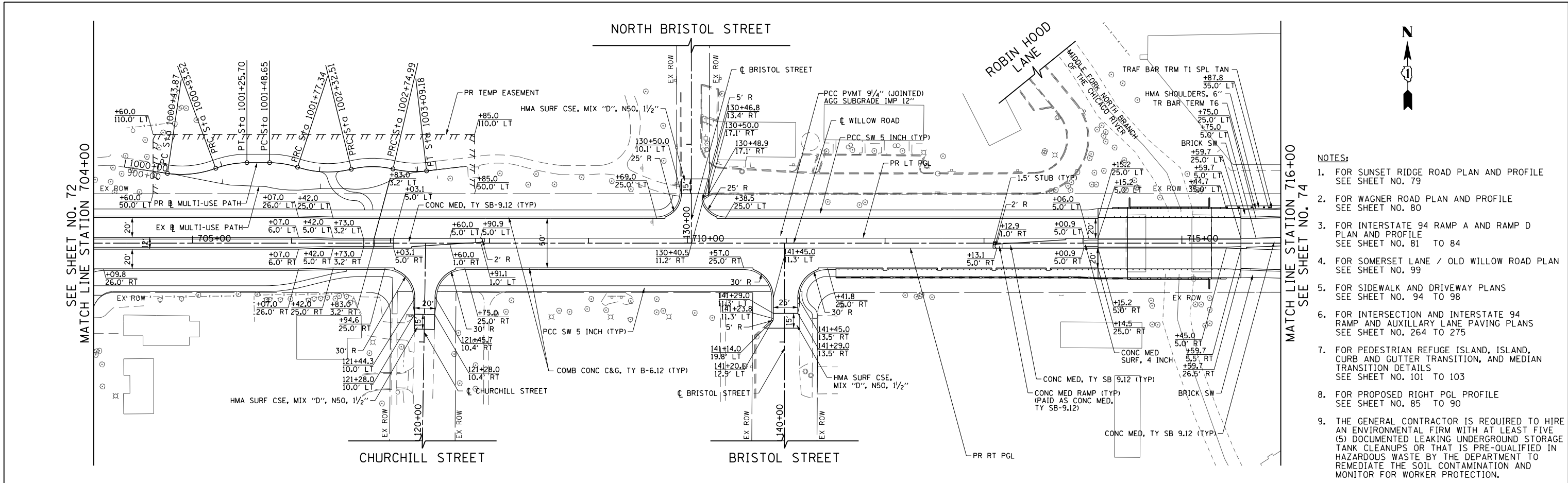
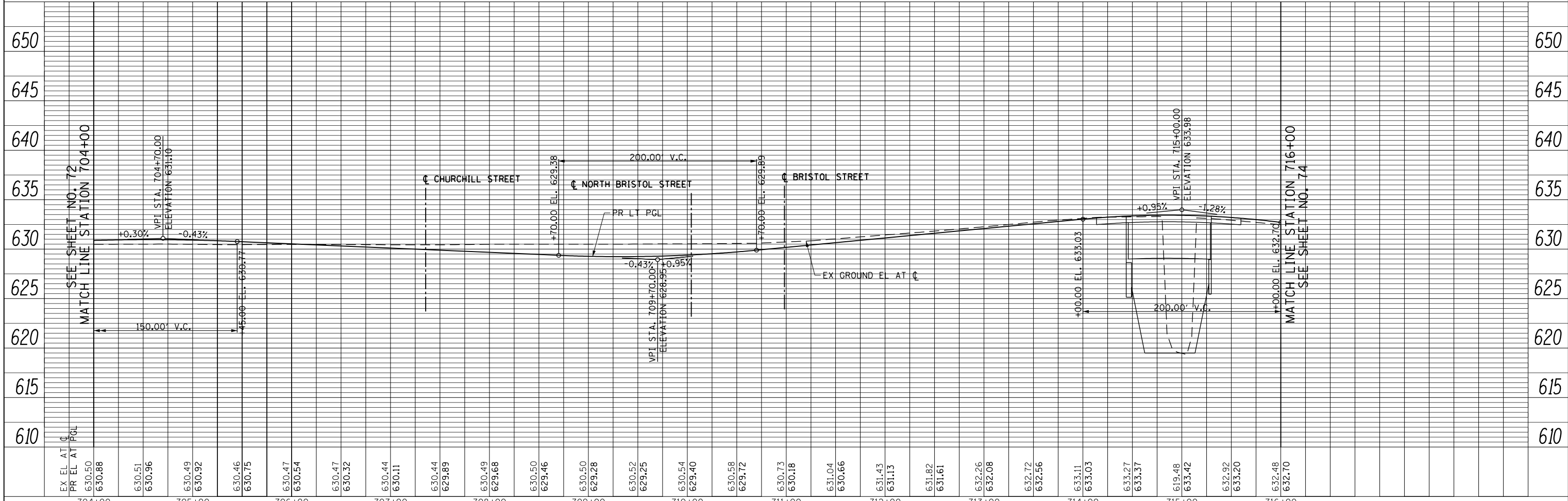


PLAN	SURVEYED	BY	DATE
NOTE BOOK NO.	PLOTTED		
	CHECKED		
	ALIGNED		
	FILE NAME		

PROFILE	SURVEYED	BY	DATE
NOTE BOOK NO.	GRADES CHECKED		
	STRUCTURE NOTATIONS CHECKED		



- NOTES:**
- FOR SUNSET RIDGE ROAD PLAN AND PROFILE SEE SHEET NO. 79
 - FOR WAGNER ROAD PLAN AND PROFILE SEE SHEET NO. 80
 - FOR INTERSTATE 94 RAMP A AND RAMP D PLAN AND PROFILE SEE SHEET NO. 81 TO 84
 - FOR SOMERSET LANE / OLD WILLOW ROAD PLAN SEE SHEET NO. 99
 - FOR SIDEWALK AND DRIVEWAY PLANS SEE SHEET NO. 94 TO 98
 - FOR INTERSECTION AND INTERSTATE 94 RAMP AND AUXILIARY LANE PAVING PLANS SEE SHEET NO. 264 TO 275
 - FOR PEDESTRIAN REFUGE ISLAND, ISLAND, CURB AND GUTTER TRANSITION, AND MEDIAN TRANSITION DETAILS SEE SHEET NO. 101 TO 103
 - FOR PROPOSED RIGHT PGL PROFILE SEE SHEET NO. 85 TO 90
 - THE GENERAL CONTRACTOR IS REQUIRED TO HIRE AN ENVIRONMENTAL FIRM WITH AT LEAST FIVE (5) DOCUMENTED LEAKING UNDERGROUND STORAGE TANK CLEANUPS OR THAT IS PRE-QUALIFIED IN HAZARDOUS WASTE BY THE DEPARTMENT TO REMEDIATE THE SOIL CONTAMINATION AND MONITOR FOR WORKER PROTECTION.



FILE NAME = g:\ch11\0158\road\Sheets\160135-SHT-PLNPRF-08.dgn	USER NAME = BAW:ort	DESIGNED - JLV	REVISED -	STATE OF ILLINOIS DEPARTMENT OF TRANSPORTATION	WILLOW ROAD PLAN AND PROFILE	F.A.P. RTE. 305	SECTION (1920.01,1518,2022&1922.4BR)	COUNTY COOK	TOTAL SHEETS 919	SHEET NO. 73
PLOT SCALE = 100.000' / in.	CHECKED - RCB	REVISED -	SCALE: HORIZ. 1"=50'			SHEET NO. 73 OF 919 SHEETS	STA. 704+00 TO STA. 716+00	CONTRACT NO. 60T35		
PLOT DATE = 11/28/2012	DATE = 10/31/2012	REVISED -	VERT. 1"=5'			FED. ROAD DIST. NO. 1 ILLINOIS FED. AID PROJECT				