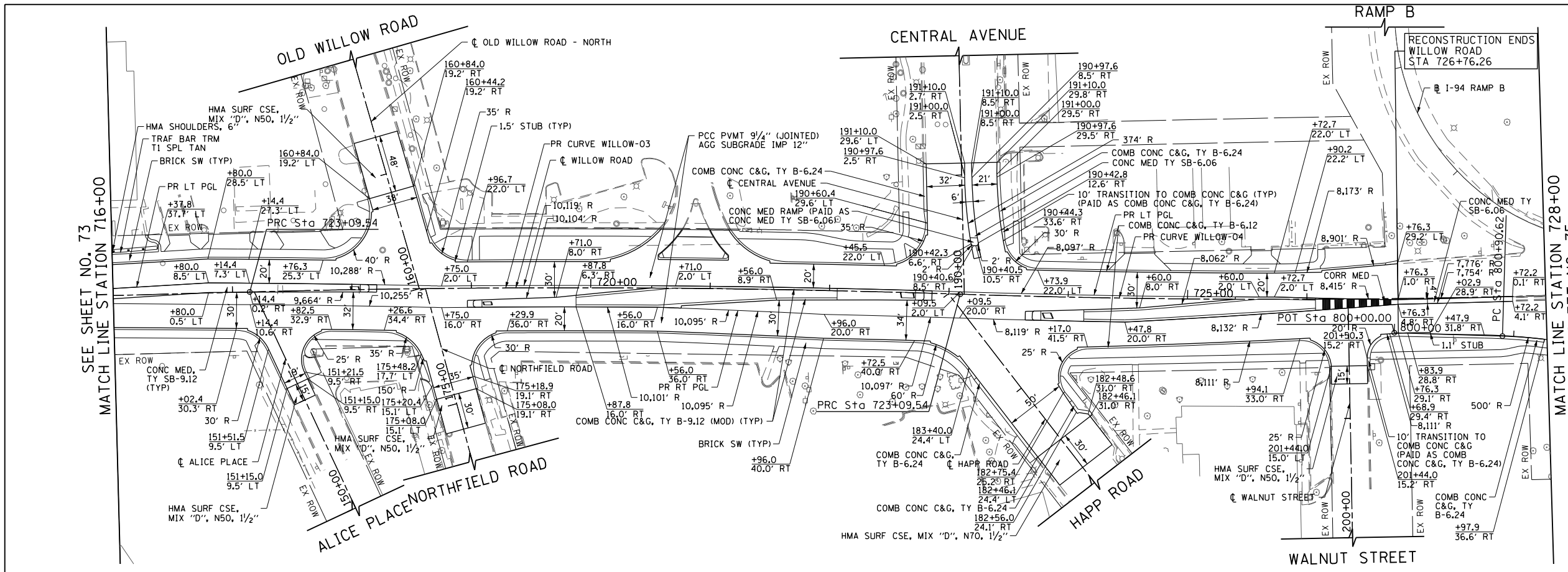
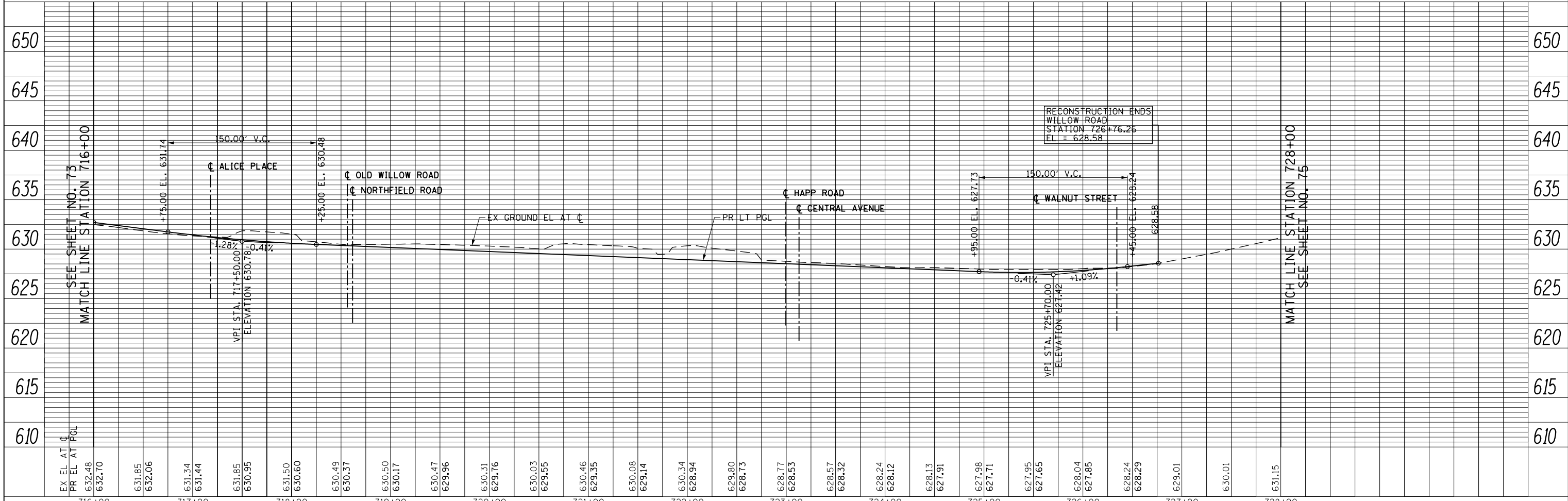


PLAN	SURVEYED	DATE
	PLOTTED	BY
	GRADES CHECKED	
	STRUCTURE NOTATIONS CHECKED	
	NOTE BOOK NO.	

PROFILE	SURVEYED	DATE
	PLOTTED	BY
	GRADES CHECKED	
	STRUCTURE NOTATIONS CHECKED	
	NOTE BOOK NO.	



- PR CURVE WILLOW-03
PI STA. = 720+12.05
 $\Delta = 3^\circ 22' 14''$ (RT)
D = 0° 33' 59"
R = 10,117.00'
T = 297.66'
L = 595.14'
E = 4.38'
e = NC
P.C. STA. = 717+14.39
P.T. STA. = 723+09.54
- PR CURVE WILLOW-04
PI STA. = 725+60.69
 $\Delta = 3^\circ 33' 09''$ (LT)
D = 0° 42' 27"
R = 8,098.70'
T = 251.15'
L = 502.15'
E = 3.89'
e = NC
P.C. STA. = 723+09.54
P.T. STA. = 728+11.68
- NOTES:
- FOR SUNSET RIDGE ROAD PLAN AND PROFILE SEE SHEET NO. 79
 - FOR WAGNER ROAD PLAN AND PROFILE SEE SHEET NO. 80
 - FOR INTERSTATE 94 RAMP A AND RAMP D PLAN AND PROFILE SEE SHEET NO. 81 TO 84
 - FOR SOMERSET LANE / OLD WILLOW ROAD PLAN SEE SHEET NO. 99
 - FOR SIDEWALK AND DRIVEWAY PLANS SEE SHEET NO. 94 TO 98
 - FOR INTERSECTION AND INTERSTATE 94 RAMP AND AUXILIARY LANE PAVING PLANS SEE SHEET NO. 264 TO 275
 - FOR PEDESTRIAN REFUGE ISLAND, ISLAND, CURB AND GUTTER TRANSITION, AND MEDIAN TRANSITION DETAILS SEE SHEET NO. 101 TO 103
 - FOR PROPOSED RIGHT PGL PROFILE SEE SHEET NO. 85 TO 90
 - THE GENERAL CONTRACTOR IS REQUIRED TO HIRE AN ENVIRONMENTAL FIRM WITH AT LEAST FIVE (5) DOCUMENTED LEAKING UNDERGROUND STORAGE TANK CLEANUPS OR THAT IS PRE-QUALIFIED IN HAZARDOUS WASTE BY THE DEPARTMENT TO REMEDIATE THE SOIL CONTAMINATION AND MONITOR FOR WORKER PROTECTION.



FILE NAME =	USER NAME = BAW\rt	DESIGNED - JLV	REVISED -	F.A.P. RTE.	SECTION	COUNTY	TOTAL SHEETS	SHEET NO.
g:\ch11\0158\road\Sheets\160135-SHT-PLNPRF-09.dgn		DRAWN - KAL	REVISED -	305	(1920.01,1518,2022&1922.4BR)	COOK	919	74
PLOT SCALE = 100.000 / in.		CHECKED - RCB	REVISED -	CONTRACT NO. 60T35				
PLOT DATE = 11/28/2012		DATE = 10/31/2012	REVISED -	FED. ROAD DIST. NO. 1 ILLINOIS FED. AID PROJECT				

STATE OF ILLINOIS
DEPARTMENT OF TRANSPORTATION

WILLOW ROAD PLAN AND PROFILE

SCALE: HORIZ. 1"=50'
VERT. 1"=5'
SHEET NO. 74 OF 919 SHEETS
STA. 716+00 TO STA. 728+00