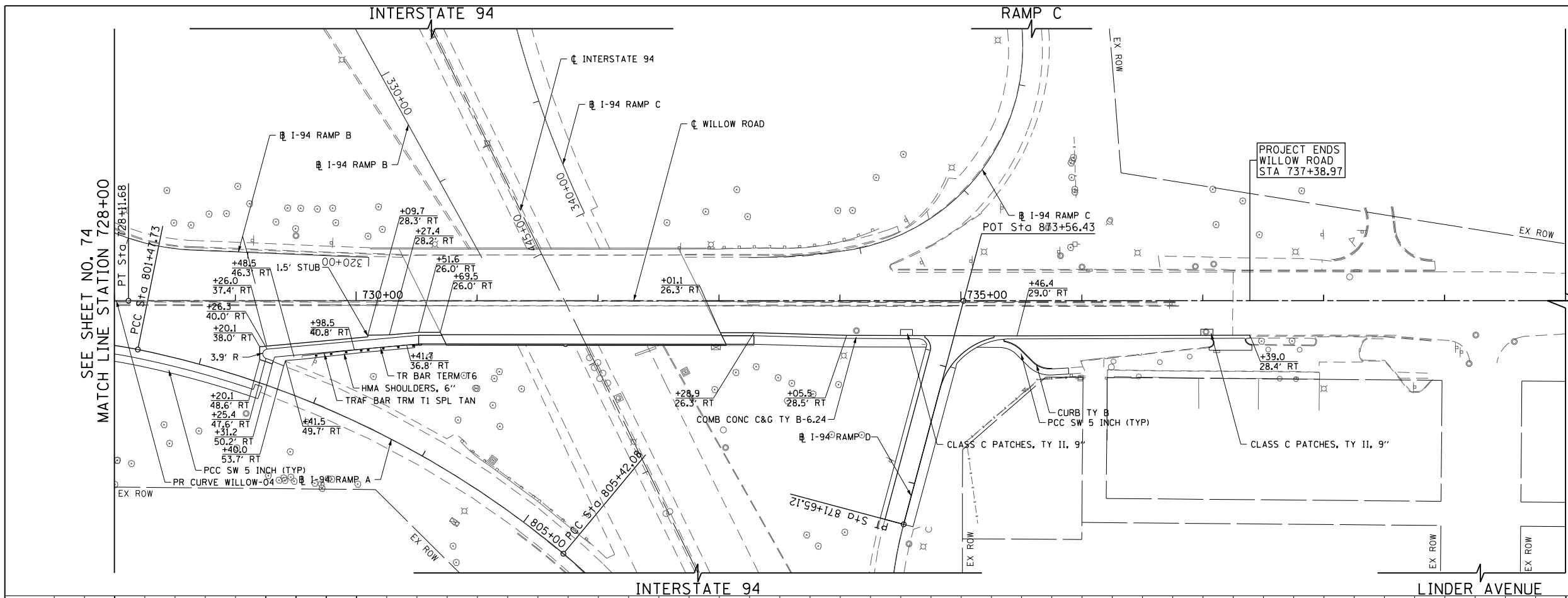


PLAN	SURVEYED	BY	DATE
	PLOTTED		
	CHECKED		
	ALIGNED		
	CAD FILE NAME		
	NO.		

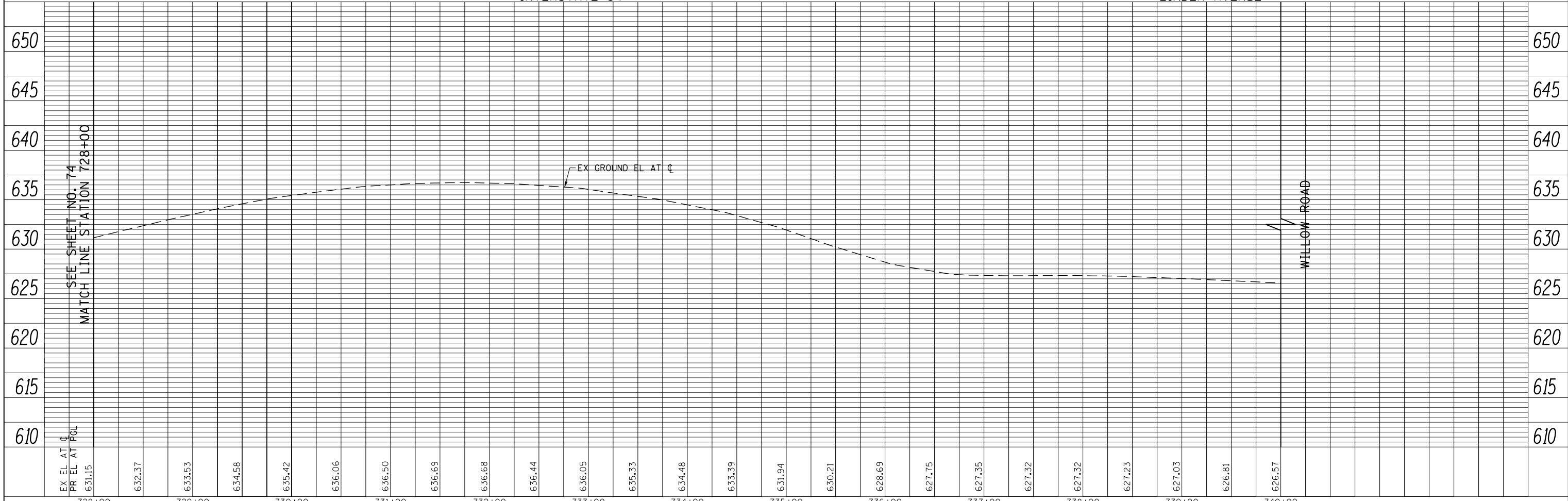
PROFILE	SURVEYED	BY	DATE
	PLOTTED		
	CHECKED		
	GRADES		
	STRUCTURE		
	NOTATIONS		
	CHKD		
	NO.		



N

PR CURVE WILLOW-04
 PI STA. = 725+60.69
 $\Delta = 3^\circ 33' 09''$ (LT)
 $D = 0^\circ 42' 27''$
 $R = 8,098.70'$
 $T = 251.15'$
 $L = 502.15'$
 $E = 3.89'$
 $e = NC$
 P.C. STA. = 723+09.54
 P.T. STA. = 728+11.68

- NOTES:**
- FOR SUNSET RIDGE ROAD PLAN AND PROFILE SEE SHEET NO. 79
 - FOR WAGNER ROAD PLAN AND PROFILE SEE SHEET NO. 80
 - FOR INTERSTATE 94 RAMP A AND RAMP D PLAN AND PROFILE SEE SHEET NO. 81 TO 84
 - FOR SOMERSET LANE / OLD WILLOW ROAD PLAN SEE SHEET NO. 99
 - FOR SIDEWALK AND DRIVEWAY PLANS SEE SHEET NO. 94 TO 98
 - FOR INTERSECTION AND INTERSTATE 94 RAMP AND AUXILIARY LANE PAVING PLANS SEE SHEET NO. 264 TO 275
 - FOR PEDESTRIAN REFUGE ISLAND, ISLAND, CURB AND GUTTER TRANSITION, AND MEDIAN TRANSITION DETAILS SEE SHEET NO. 101 TO 103
 - FOR PROPOSED RIGHT PGL PROFILE SEE SHEET NO. 85 TO 90
 - THE GENERAL CONTRACTOR IS REQUIRED TO HIRE AN ENVIRONMENTAL FIRM WITH AT LEAST FIVE (5) DOCUMENTED LEAKING UNDERGROUND STORAGE TANK CLEANUPS OR THAT IS PRE-QUALIFIED IN HAZARDOUS WASTE BY THE DEPARTMENT TO REMEDIATE THE SOIL CONTAMINATION AND MONITOR FOR WORKER PROTECTION.



FILE NAME =	USER NAME = BAW:ort	DESIGNED - JLV	REVISED -
g:\ch11\0158\road\Sheets\160135-SHT-PLNPRF-10.dgn		DRAWN - KAL	REVISED -
		CHECKED - RCB	REVISED -
		DATE - 10/31/2012	REVISED -

**STATE OF ILLINOIS
DEPARTMENT OF TRANSPORTATION**

WILLOW ROAD PLAN AND PROFILE

SCALE: HORIZ: 1"=50'
 VERT: 1"=5'
 SHEET NO. 75 OF 919 SHEETS STA. 728+00 TO STA. 740+00

F.A.P. RTE.	SECTION	COUNTY	TOTAL SHEETS	SHEET NO.
305	(1920.01,1518,2022&1922,4)BR	COOK	919	75
CONTRACT NO. 60T35				
FED. ROAD DIST. NO. 1 ILLINOIS FED. AID PROJECT				