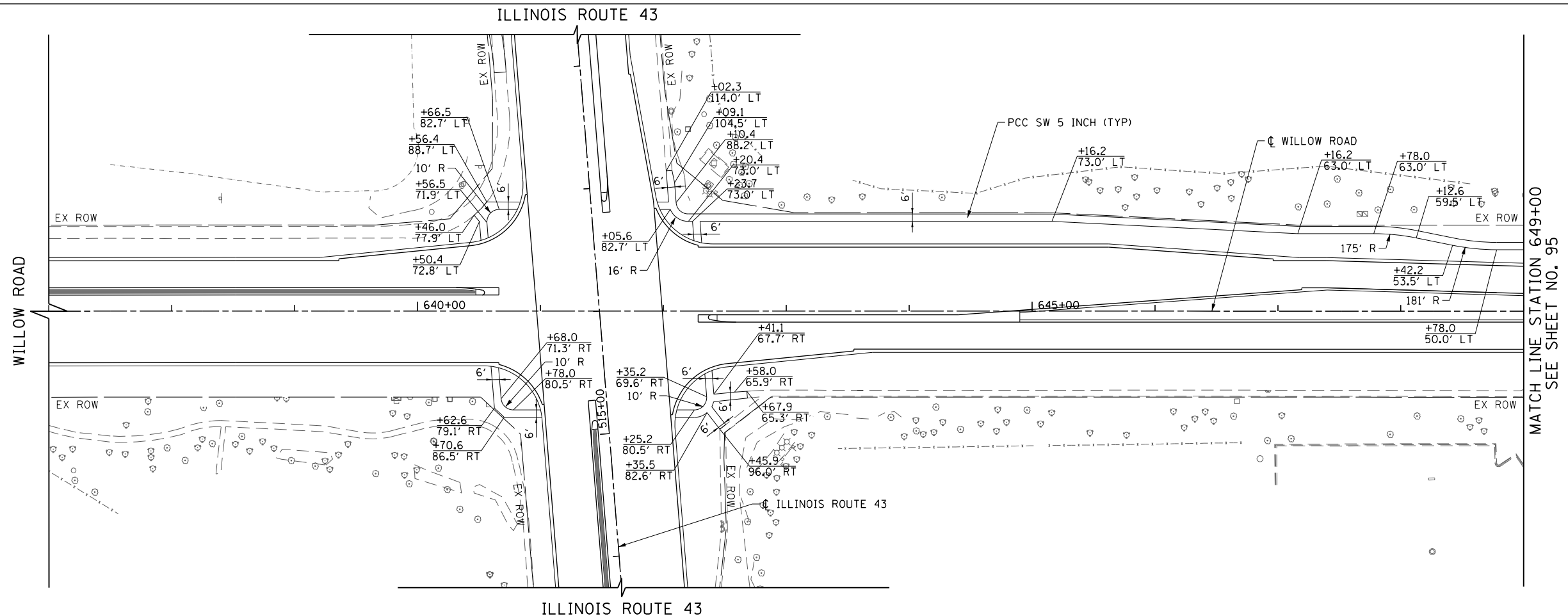
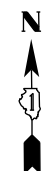


**LEGEND**

- (A) HMA SURF CSE, MIX "D", N50 - 2"  
HMA BASE CSE, 6"
- (B) HMA SURF CSE, MIX "D", N50 - 2"  
HMA BASE CSE, 8"
- (C) PCC DRV PVMT, 6"
- (D) PCC DRV PVMT, 8"



MATCH LINE STATION 649+00  
SEE SHEET NO. 95

- NOTE:**
1. ALL DRIVEWAY FLARES SHALL BE 15' (1:1 RATE).
  2. ALL SIDEWALK RAMP MUST BE ADA COMPLIANT.
  3. ALL SIDEWALK EAST OF THE WILLOW ROAD BRIDGE OVER THE MIDDLE FORK NORTH BRANCH OF THE CHICAGO RIVER TO WALNUT STREET SHALL BE BRICK SIDEWALK.
  4. FOR ADDITIONAL DRIVEWAY DETAILS SEE SHEET NO. 515 TO 516
  5. FOR MULTI-USE PATH AND CONNECTION DETAILS SEE SHEET NO. 100
  6. FOR SIDEWALK TRANSITION FROM 6' TO 4' SEE SHEET NO. 103

FILE NAME =	USER NAME = BAW:tor.t	DESIGNED - JLV	REVISED -	<b>STATE OF ILLINOIS DEPARTMENT OF TRANSPORTATION</b>	<b>WILLOW ROAD SIDEWALK AND DRIVEWAY PLAN</b>	F.A.P. RTE.	SECTION	COUNTY	TOTAL SHEETS	SHEET NO.		
G:\CH11\0158\Road\Sheets\0160T35-SHT-S0\WLK-01.dgn						DRAWN - KAL	REVISED -	305	(1920.01,1518,2022&1922.4)BR	COOK	919	94
PLOT SCALE = 100.000' / in.						CHECKED - RCB	REVISED -	CONTRACT NO. 60T35				
PLOT DATE = 11/28/2012						DATE - 10/31/2012	REVISED -	FED. ROAD DIST. NO. 1   ILLINOIS   FED. AID PROJECT				
						SCALE: 1" = 50'		SHEET NO. 94 OF 919 SHEETS		STA. 637+00 TO STA. 649+00		