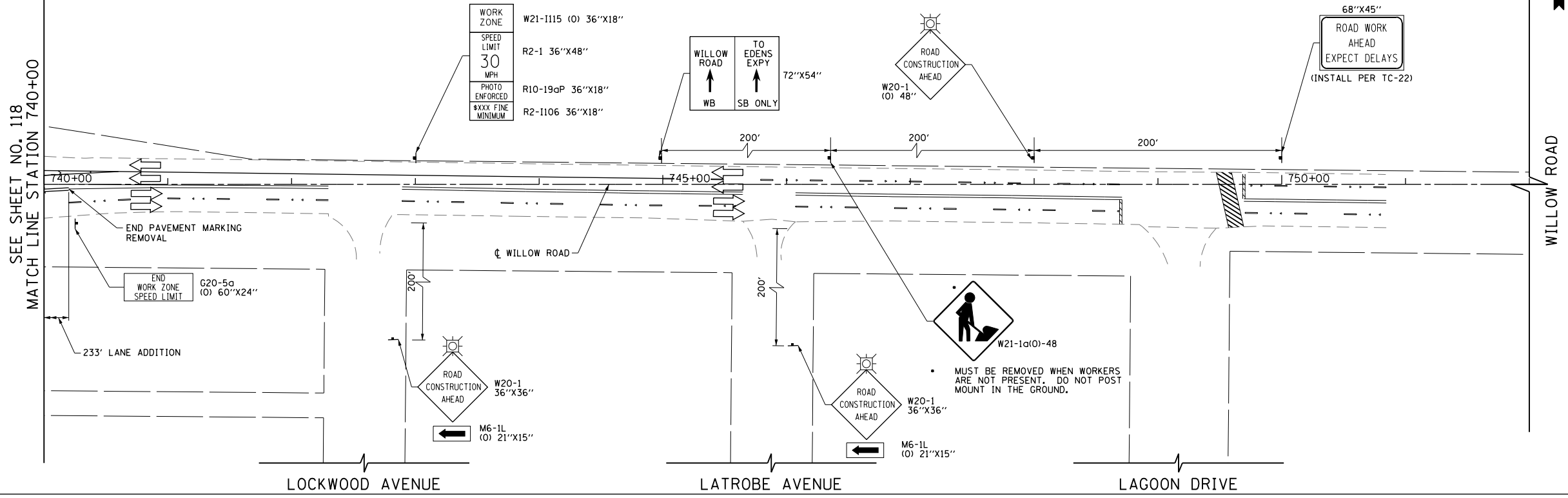
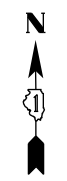


SEE SHEET NO. 118  
MATCH LINE STATION 740+00



LEGEND

|  |  |
|--|--|
|  | CONSTRUCTION WORK ZONE   |
|  | POST-STAGE 1 CONSTRUCTION WORK ZONE  |
|  | PRE-STAGE 3 CONSTRUCTION WORK ZONE   |
|  | TEMPORARY PAVEMENT TO BE CONSTRUCTED PRE-STAGE 1   |
|  | TEMPORARY PAVEMENT TO BE CONSTRUCTED POST-STAGE 1  |
|  | ARROW BOARD  |
|  | SIGN TO BE PLACED ON PERMANENT OR PORTABLE SUPPORT   |
|  | MONODIRECTIONAL FLASHING LIGHT   |
|  | DRUMS WITH STEADY BURN MONO-DIRECTIONAL LIGHT @ 50' C-C (TYP), 25' C-C IN CURVES AND RADII, AND 20' C-C IN TAPERS                |
|  | DRUMS WITH STEADY BURN BI-DIRECTIONAL LIGHT @ 50' C-C (TYP), 25' C-C IN CURVES AND RADII, AND 20' C-C IN TAPERS                  |
|  | TYPE III BARRICADE WITH TWO (2) FLASHING LIGHTS  |
|  | VERTICAL PANELS WITH STEADY BURN MONO-DIRECTIONAL LIGHT @ 50' C-C (TYP), 25' C-C IN CURVES AND RADII, AND 20' C-C IN TAPERS      |
|  | DOUBLE VERTICAL PANELS WITH STEADY BURN BI-DIRECTIONAL LIGHT @ 50' C-C (TYP), 25' C-C IN CURVES AND RADII, AND 20' C-C IN TAPERS |
|  | MONO-DIRECTIONAL INDICATOR BARRICADES WITH STEADY BURN LIGHTS @ 20' C-C  |
|  | DIRECTION OF TRAFFIC FLOW  |
|  | 1 DRIVEWAY ENTRANCE 30" X 30" SEE TC-26  |
|  | 2 DRIVEWAY ENTRANCE 30" X 30" SEE TC-26  |
|  | 3 R3-2 24" X 24"   |
|  | 4 STOP R1-1  |
|  | 5 CAUTION NEW LANES OPEN STOP HERE 30" X 36"   |
|  | 6 ONE WAY R6-1R 36" X 12"  |

|   |                      |                |            |
|---|----------------------|----------------|------------|
| FILE NAME = G:\CH11\0158\Road\Road-GV\Sheets\0160T35-SHT-STAGING-1-07.dgn | USER NAME = BAW\rt.t | DESIGNED - DBC | REVISED -  |
| PLOT SCALE = 100.000' / in.   | CHECKED - RCB        | REVISIED -     | REVISIED - |
| PLOT DATE = 11/29/2012  | DATE - 10/31/2012    | REVISIED -     | REVISIED - |

**STATE OF ILLINOIS  
DEPARTMENT OF TRANSPORTATION**

**SUGGESTED CONSTRUCTION PROCEDURES AND  
MAINTENANCE OF TRAFFIC – WILLOW ROAD STAGE 1**

SCALE: 1" = 50' SHEET NO. 119 OF 919 SHEETS STA. 740+00 TO STA. 752+00

|   |                              |        |                    |           |
|---|------------------------------|--------|--------------------|-----------|
| F.A.P. RTE.                                     | SECTION                      | COUNTY | TOTAL SHEETS       | SHEET NO. |
| 305   | 1920..01,1518,2022&1922,4B1R | COOK   | 919                | 119       |
| FED. ROAD DIST. NO. 1 ILLINOIS FED. AID PROJECT |                              |        | CONTRACT NO. 60T35 |           |