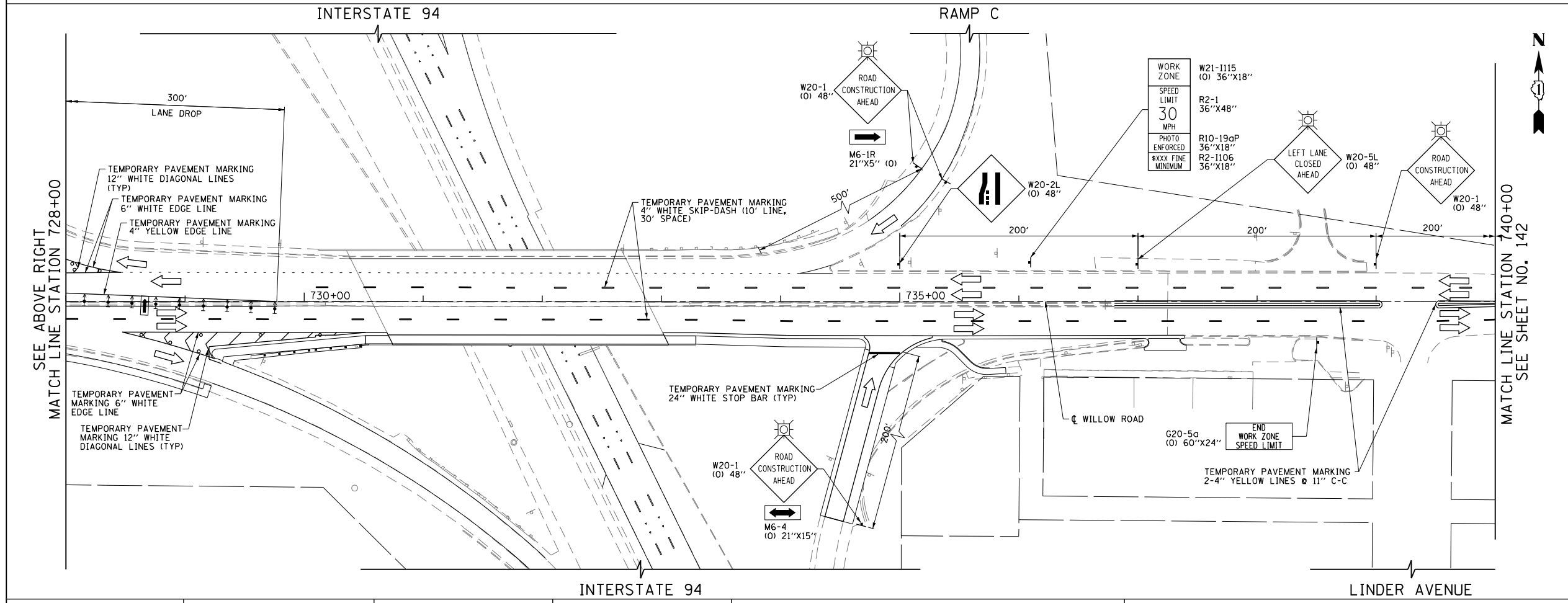


- (A) TEMPORARY PAVEMENT MARKING 24" WHITE STOP BAR (TYP)
- (B) TEMPORARY PAVEMENT MARKING 8" WHITE CROSSWALK LINE (TYP)
- (C) TEMPORARY PAVEMENT MARKING 2-4" YELLOW LINES @ 11" C-C
- (D) TEMPORARY PAVEMENT MARKING 6" WHITE TURN LANE LINE
- (E) TEMPORARY PAVEMENT MARKING 6" WHITE EDGE LINE
- (F) TEMPORARY PAVEMENT MARKING 12" WHITE DIAGONAL LINES (TYP)
- (G) TEMPORARY PAVEMENT MARKING 12" YELLOW DIAGONAL LINES (TYP)
- (H) TEMPORARY PAVEMENT MARKING 4" WHITE SKIP-DASH (10' LINE, 30' SPACE)
- (I) TEMPORARY PAVEMENT MARKING WHITE LETTERS & SYMBOLS (TYP)
- (J) TEMPORARY PAVEMENT MARKING 6" WHITE SKIP-DASH (2' LINE, 6' SPACE)

LEGEND

	CONSTRUCTION WORK ZONE
	POST-STAGE 1 CONSTRUCTION WORK ZONE
	PRE-STAGE 3 CONSTRUCTION WORK ZONE
	TEMPORARY PAVEMENT TO BE CONSTRUCTED PRE-STAGE 1
	TEMPORARY PAVEMENT TO BE CONSTRUCTED POST-STAGE 1
	ARROW BOARD
	SIGN TO BE PLACED ON PERMANENT OR PORTABLE SUPPORT
	MONODIRECTIONAL FLASHING LIGHT
	DRUMS WITH STEADY BURN MONO-DIRECTIONAL LIGHT @ 50' C-C (TYP), 25' C-C IN CURVES AND RADII, AND 20' C-C IN TAPERS
	DRUMS WITH STEADY BURN BI-DIRECTIONAL LIGHT @ 50' C-C (TYP), 25' C-C IN CURVES AND RADII, AND 20' C-C IN TAPERS
	TYPE III BARRICADE WITH TWO (2) FLASHING LIGHTS
	VERTICAL PANELS WITH STEADY BURN MONO-DIRECTIONAL LIGHT @ 50' C-C (TYP), 25' C-C IN CURVES AND RADII, AND 20' C-C IN TAPERS
	DOUBLE VERTICAL PANELS WITH STEADY BURN BI-DIRECTIONAL LIGHT @ 50' C-C (TYP), 25' C-C IN CURVES AND RADII, AND 20' C-C IN TAPERS
	MONO-DIRECTIONAL INDICATOR BARRICADES WITH STEADY BURN LIGHTS @ 20' C-C
	DIRECTION OF TRAFFIC FLOW
	1 DRIVEWAY ENTRANCE 30" X 30" SEE TC-26
	2 DRIVEWAY ENTRANCE 30" X 30" SEE TC-26
	3 R3-2 24" X 24"
	4 R1-1 STOP
	5 CAUTION NEW LANES OPEN STOP HERE 30" X 36"
	6 R6-1R 36" X 12" ONE WAY



FILE NAME =	USER NAME = BAW:tor.t	DESIGNED - DBC	REVISED -
G:\CH11\0158\Road\Road-GV\Sheets\0160T35-SHT-STAGING-3-06.dgn		DRAWN - FY	REVISED -
PLOT SCALE = 100.000' / in.		CHECKED - RCB	REVISED -
PLOT DATE = 11/29/2012		DATE - 10/31/2012	REVISED -

**STATE OF ILLINOIS
DEPARTMENT OF TRANSPORTATION**

**SUGGESTED CONSTRUCTION PROCEDURES AND
MAINTENANCE OF TRAFFIC - WILLOW ROAD STAGE 3**

SCALE: 1" = 50' SHEET NO. 141 OF 919 SHEETS STA. 716+00 TO STA. 740+00

F.A.P. RTE.	SECTION	COUNTY	TOTAL SHEETS	SHEET NO.
305	1920,01,1518,2022&1922,4BIR	COOK	919	141
FED. ROAD DIST. NO. 1 ILLINOIS FED. AID PROJECT			CONTRACT NO. 60T35	