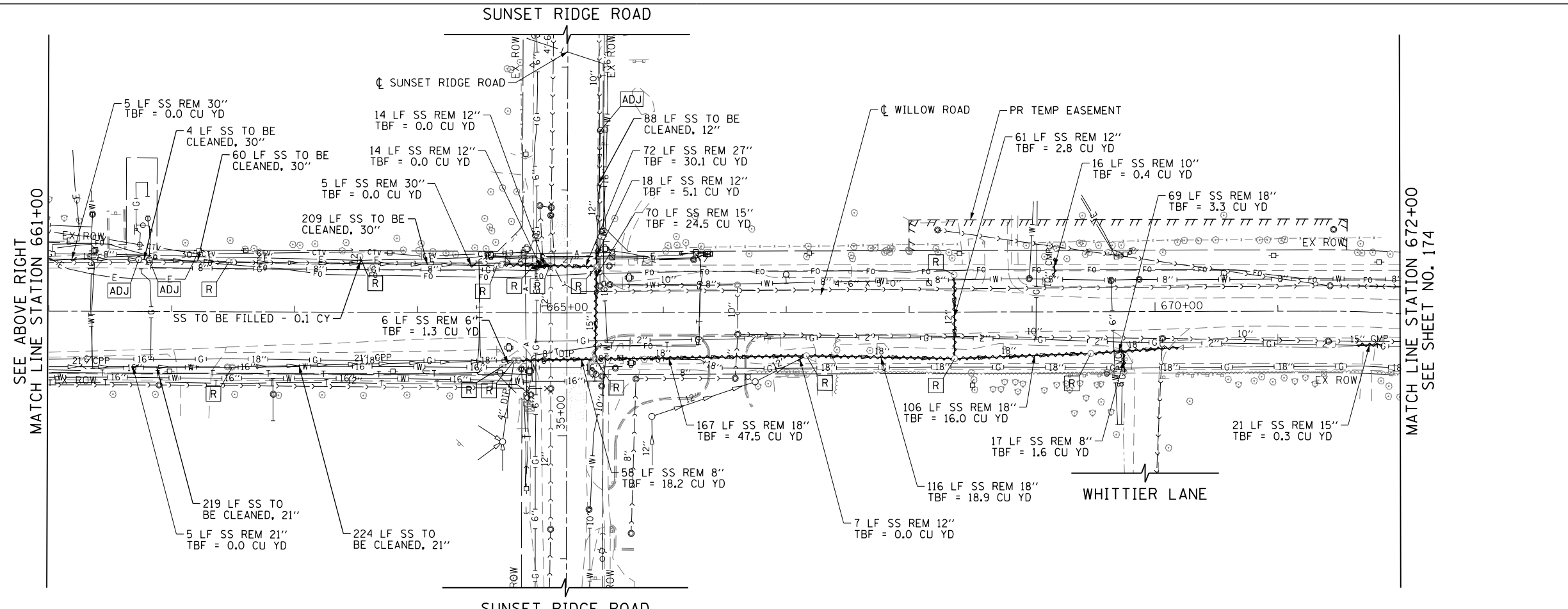


- LEGEND**
- STORM SEWER REMOVAL
 - DRAINAGE STRUCTURE REMOVAL
 - DRAINAGE STRUCTURE ADJUSTED



FILE NAME =	USER NAME = BAW\ort	DESIGNED - JLV	REVISED -	STATE OF ILLINOIS DEPARTMENT OF TRANSPORTATION	WILLOW ROAD DRAINAGE REMOVAL PLAN		F.A.P. RTE.	SECTION	COUNTY	TOTAL SHEETS	SHEET NO.
g:\ch11\0158\road\Sheets\0160135-SHT-DR-REM-02.dgn		DRAWN - KAL	REVISED -		305	(1920.01,1518,2022&1922,4BR)	COOK	919	173		
PLOT SCALE = 100.000' / in.		CHECKED - RCB	REVISED -		CONTRACT NO. 60T35						
PLOT DATE = 11/1/2012		DATE - 10/31/2012	REVISED -		SCALE: 1" = 50'	SHEET NO. 173 OF 919 SHEETS	STA. 649+00	TO STA. 672+00	FED. ROAD DIST. NO. 1	ILLINOIS	FED. AID PROJECT