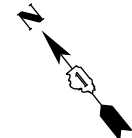
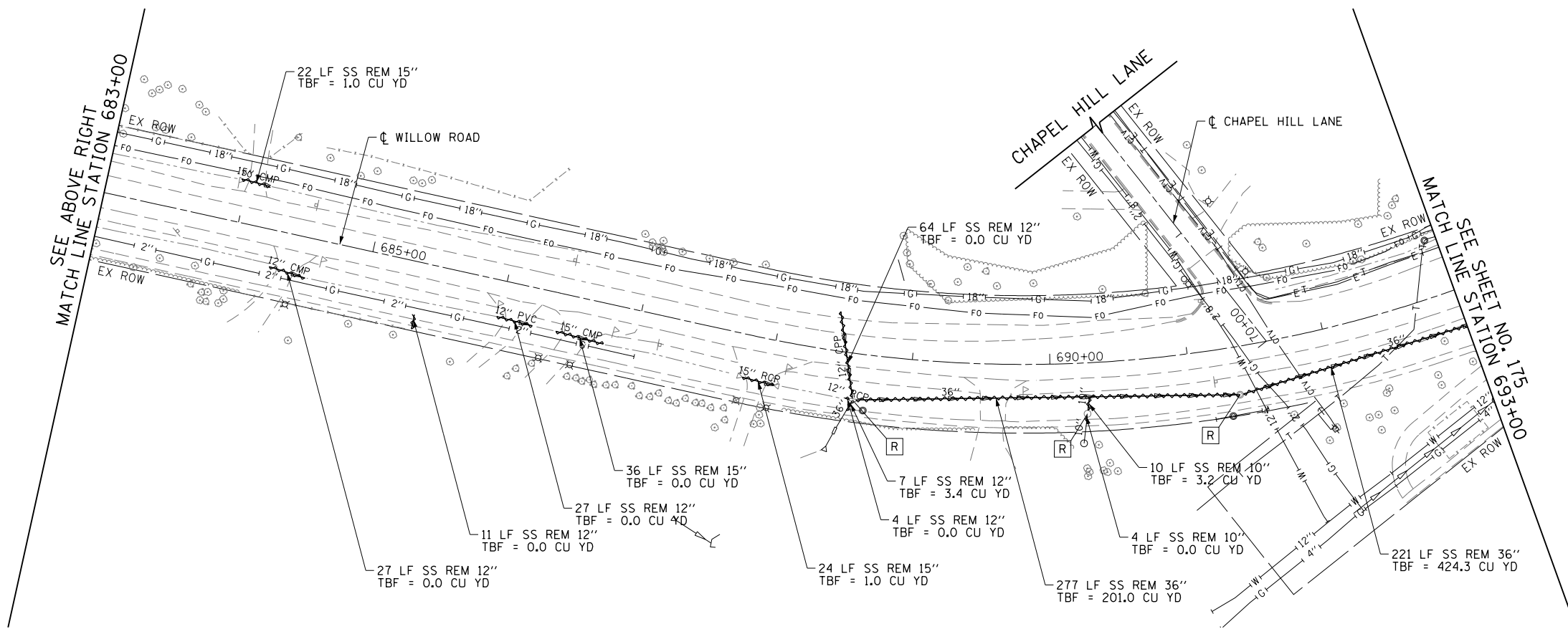


- LEGEND**
- STORM SEWER REMOVAL
 - DRAINAGE STRUCTURE REMOVAL
 - DRAINAGE STRUCTURE ADJUSTED



FILE NAME =	USER NAME = BAW:ort	DESIGNED - JLV	REVISED -	STATE OF ILLINOIS DEPARTMENT OF TRANSPORTATION	WILLOW ROAD DRAINAGE REMOVAL PLAN	F.A.P. RTE.	SECTION	COUNTY	TOTAL SHEETS	SHEET NO.	
g:\ch11\0158\road\Sheets\0160T35-SHT-DR-REM-03.dgn		DRAWN - KAL	REVISED -			305	(1920.01,1518,2022&1922.4)R	COOK	919	174	
PLOT SCALE = 100.000' / in.		CHECKED - RCB	REVISED -			CONTRACT NO. 60T35					
PLOT DATE = 11/1/2012		DATE - 10/31/2012	REVISED -			SCALE: 1" = 50'	SHEET NO. 174 OF 919 SHEETS	STA. 672+00	TO STA. 693+00	FED. ROAD DIST. NO. 1 ILLINOIS FED. AID PROJECT	