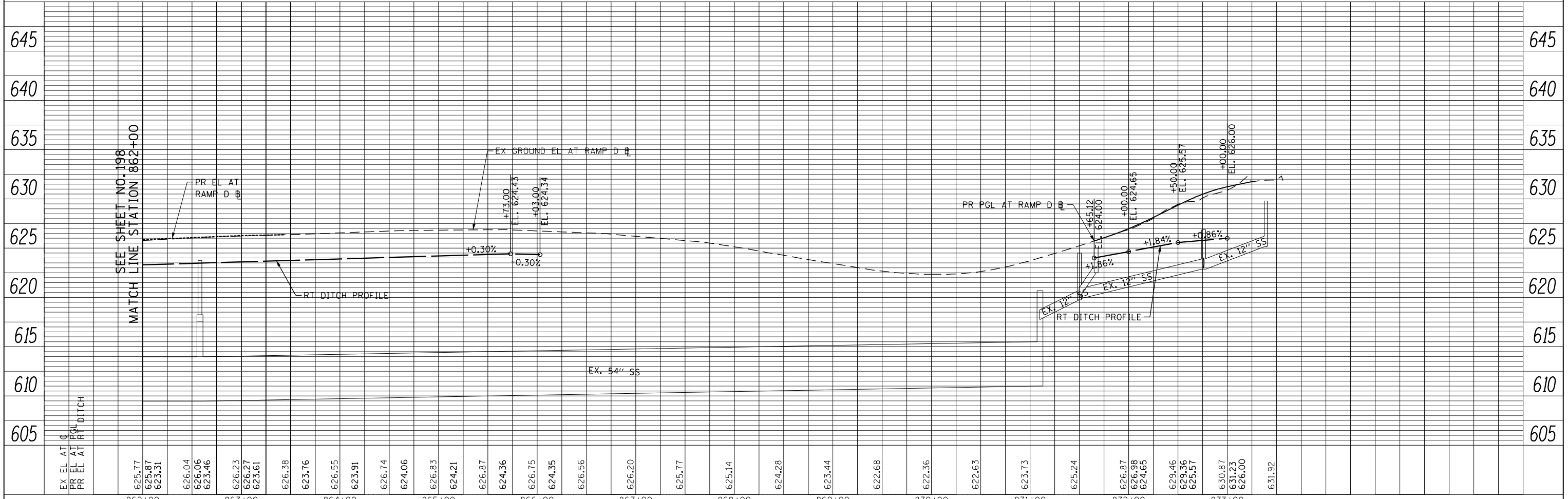
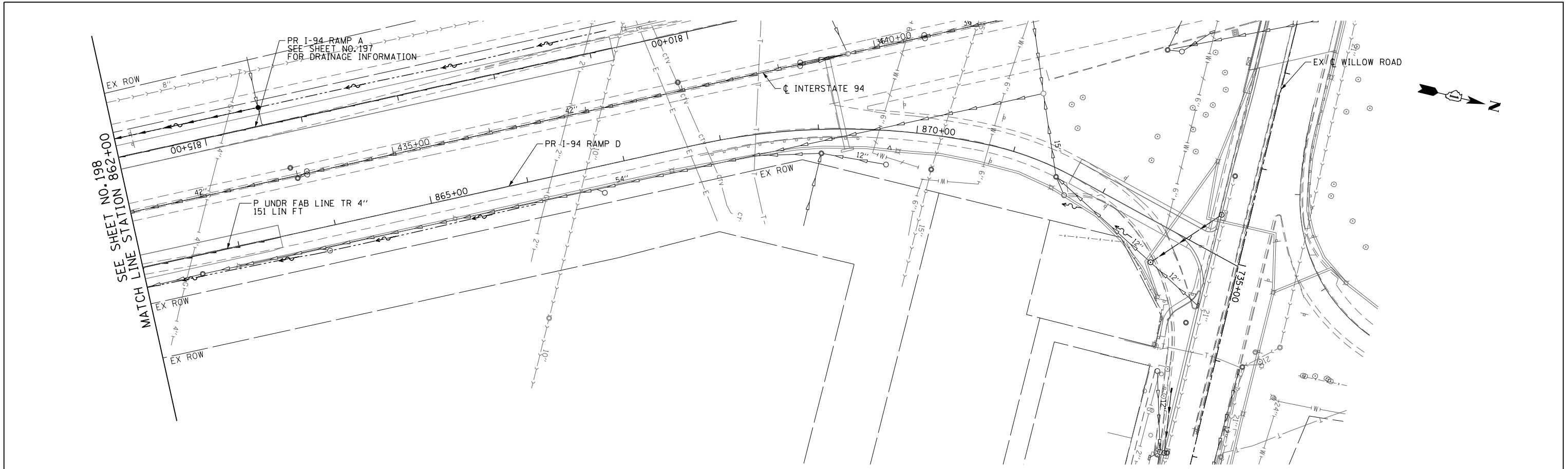


PLAN	SURVEYED	BY	DATE
	PLOTTED		
	CHECKED		
	FILE NAME		
	NO.		

PROFILE	SURVEYED	BY	DATE
	PLOTTED		
	CHECKED		
	STRUCTURE		
	NOTATIONS		
	NO.		



FILE NAME =	USER NAME = BAW:ort	DESIGNED - JLV	REVISED -
g:\chil\0158\road\Sheets\DI60T35-SHT-DRAIN-21.dgn		DRAWN - KAL	REVISED -
PLOT SCALE = 100.000' / in.		CHECKED - RCB	REVISED -
PLOT DATE = 11/1/2012		DATE - 10/31/2012	REVISED -

**STATE OF ILLINOIS  
DEPARTMENT OF TRANSPORTATION**

**INTERSTATE 94 RAMP D DRAINAGE AND UTILITY PLAN AND PROFILE**

SCALE: HORIZ: 1"=50'  
VERT: 1"=5'  
SHEET NO. 199 OF 919 SHEETS STA. 862+00 TO STA. 873+56

F.A.P. RTE.	SECTION	COUNTY	TOTAL SHEETS	SHEET NO.
305	(1920.01,1518,2022&1922.4)BR	COOK	919	199
FED. ROAD DIST. NO. 1 ILLINOIS FED. AID PROJECT			CONTRACT NO. 60T35	