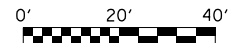
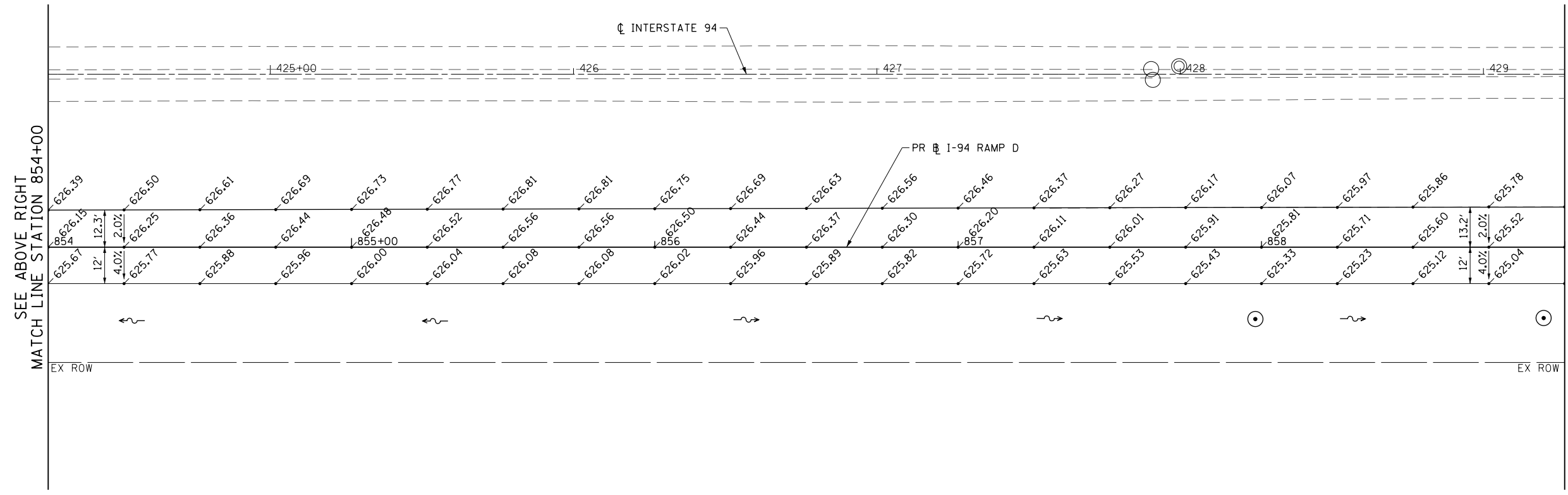


PT	STATION	OFFSET	ELEV
A	850+00.00	0.00'	621.17
B	850+25.00	0.00'	621.69
C	850+50.00	0.00'	622.16
D	850+75.00	0.00'	622.59
E	851+00.00	0.00'	622.95

- NOTES:
- ELEVATIONS ARE GIVEN EVERY 25' UNLESS OTHERWISE NOTED.
 - CROSS-SLOPE OF AUXILIARY LANE AND SHOULDER ARE 2.0% AND 4.0%, RESPECTIVELY, UNLESS OTHERWISE NOTED.



FILE NAME =	USER NAME = BAW:ort	DESIGNED - JLV	REVISED -
G:\CH11\0158\Road\Sheets\0160T35-SHT-INTERSEC-11.dgn		DRAWN - MNB	REVISED -
	PLOT SCALE = 40.000' / in.	CHECKED - RCB	REVISED -
	PLOT DATE = 12/6/2012	DATE - 10/31/2012	REVISED -

**STATE OF ILLINOIS
DEPARTMENT OF TRANSPORTATION**

INTERSTATE 94 RAMP D AUXILIARY LANE PAVING PLAN

SCALE: 1" = 20' SHEET NO. 274 OF 919 SHEETS STA. 850+00 TO STA. 859+00

F.A.P. RTE.	SECTION	COUNTY	TOTAL SHEETS	SHEET NO.
305	(1920.01,1518,2022&1922.4)R	COOK	919	274
FED. ROAD DIST. NO. 1 ILLINOIS FED. AID PROJECT			CONTRACT NO. 60T35	