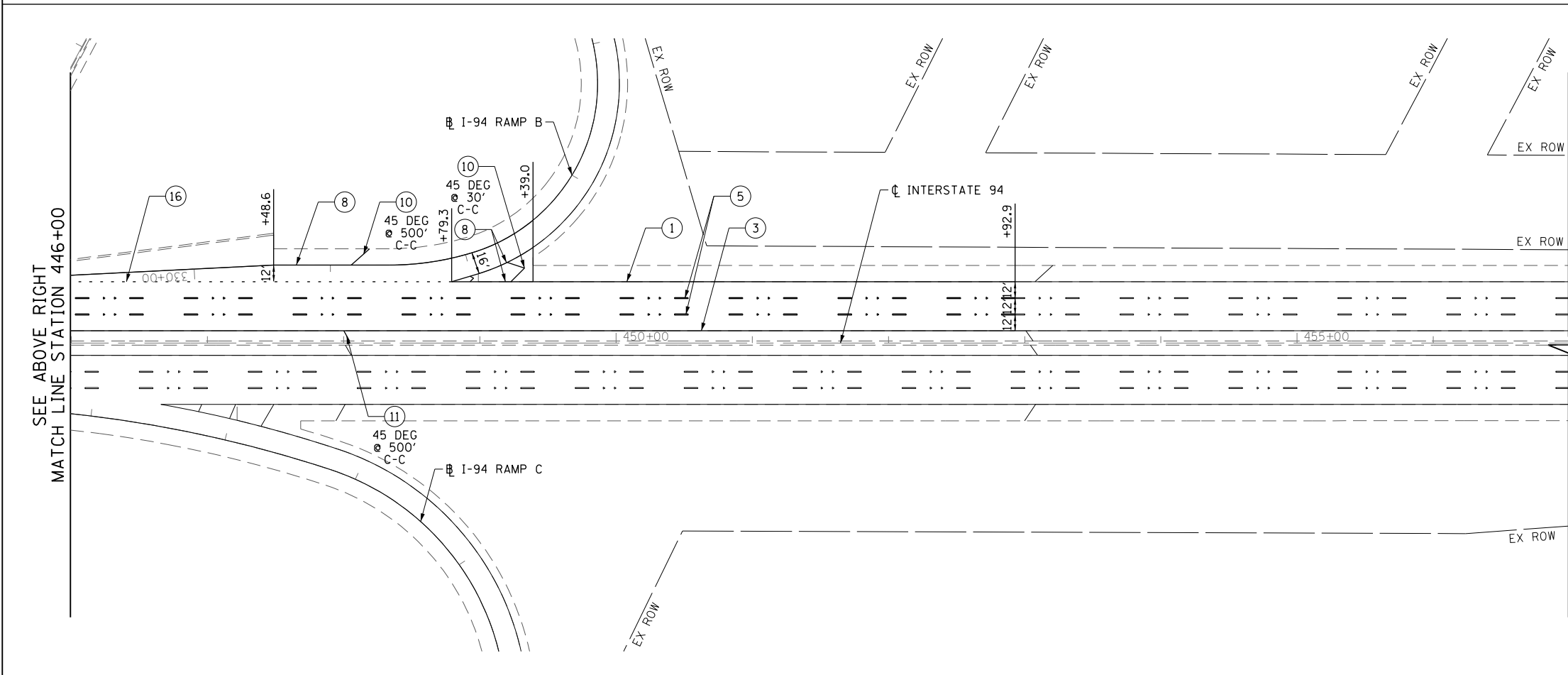
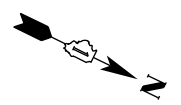


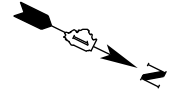
MATCH LINE STATION 446+00
SEE BELOW LEFT

- LEGEND**
- ① 4" WHITE LINE
 - ② 4" WHITE LINE (10' LINE 30" SPACE)
 - ③ 4" YELLOW LINE
 - ④ 4" DOUBLE YELLOW LINE AT 11" C-C
 - ⑤ 5" WHITE LINE (10' LINE 30" SPACE)
 - ⑥ 6" WHITE LINE
 - ⑦ 6" WHITE LINE (2' LINE 6' SPACE)
 - ⑧ 8" WHITE LINE
 - ⑨ 8" WHITE LINE (2' LINE 6' SPACE)
 - ⑩ 12" WHITE LINE
 - ⑪ 12" YELLOW LINE
 - ⑫ 24" WHITE LINE
 - ⑬ ONE WAY CRYSTAL MARKER
 - ⑭ ONE WAY AMBER MARKER
 - ⑮ TWO WAY AMBER MARKER
 - ⑯ 4" WHITE LINE (2' LINE 6' SPACE)



INTERSTATE 94

- NOTE:**
1. POLYUREA PAVEMENT MARKING TYPE 1 SHALL BE USED FOR ALL MARKINGS ON PCC PAVEMENT. THERMOPLASTIC PAVEMENT MARKING SHALL BE USED FOR ALL MARKINGS ON HMA PAVEMENT EXCEPT FOR ALL LANE LINE MARKINGS ALONG INTERSTATE 94 WHICH SHALL BE PREFORMED PLASTIC, TYPE B.
 2. ALL PREFORMED PLASTIC, TYPE B PAVEMENT MARKINGS SHALL BE GROOVED INTO THE PAVEMENT.
 3. FOR ADDITIONAL DETAILS, SEE TYPICAL APPLICATIONS RAISED REFLECTIVE PAVEMENT MARKERS (SNOW-PLOW RESISTANT), MULTI-LANE FREEWAY PAVEMENT MARKING DETAILS TC-12, AND DISTRICT ONE TYPICAL PAVEMENT MARKINGS TC-13.
 4. THE CONTRACTOR SHALL NOTIFY THE ENGINEER 72 HOURS PRIOR TO THE PLACEMENT OF THE PAVEMENT MARKINGS.
 5. ALL MEDIAN NOSES SHALL HAVE YELLOW PAVEMENT MARKINGS.
 6. EXISTING PAVEMENT MARKINGS AND LENSES FOR RAISED REFLECTIVE PAVEMENT MARKERS THAT ARE REMOVED OUTSIDE THE IMPROVEMENT LIMITS FOR STAGING OF CONSTRUCTION SHALL BE REAPPLIED OR REINSTALLED IN THE SAME LOCATION.
 7. THE STATION OR OFFSET FOR STOP BAR LOCATIONS IS GIVEN AT THE MIDDLE OF THE STOP BAR.
 8. A MINIMUM DISTANCE OF 4 FEET SHALL BE MAINTAINED BETWEEN THE EDGE OF THE CROSSWALK AND THE EDGE OF STOP BAR CLOSEST TO IT EXCEPT WHERE OTHERWISE NOTED IN THE PLANS.
 9. PAVEMENT MARKING STATIONS PROVIDED ALONG INTERSTATE 94 ARE BASED ON THE CENTERLINE UNLESS OTHERWISE NOTED.



FILE NAME =	USER NAME = BAW\rtort	DESIGNED - JLV	REVISED -
G:\CH11\0158\Road\Sheets\0160T35-SHT-PM\16.dgn		DRAWN - KAL	REVISED -
	PLOT SCALE = 100.0000' / in.	CHECKED - RCB	REVISED -
	PLOT DATE = 11/1/2012	DATE - 10/31/2012	REVISED -

**STATE OF ILLINOIS
DEPARTMENT OF TRANSPORTATION**

INTERSTATE 94 PAVEMENT MARKING PLAN

SCALE: 1" = 50' SHEET NO. 288 OF 919 SHEETS STA. 435+00 TO STA. 446+00

F.A.P. RTE.	SECTION	COUNTY	TOTAL SHEETS	SHEET NO.
305	(1920.01,1518,2022&1922,4BIR	COOK	919	288
FED. ROAD DIST. NO. 1 ILLINOIS FED. AID PROJECT			CONTRACT NO. 60T35	