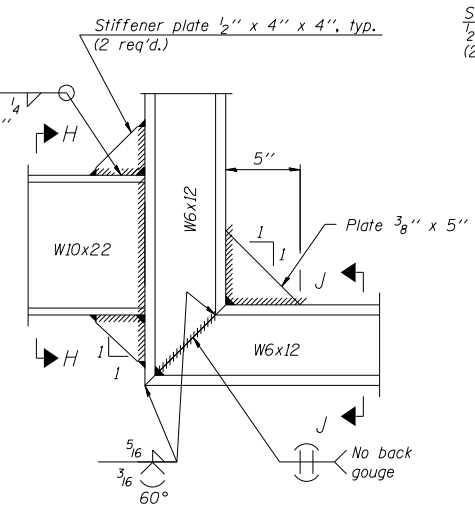
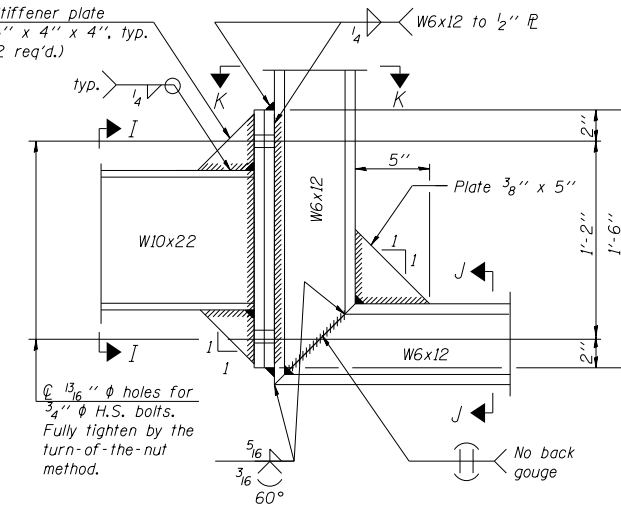


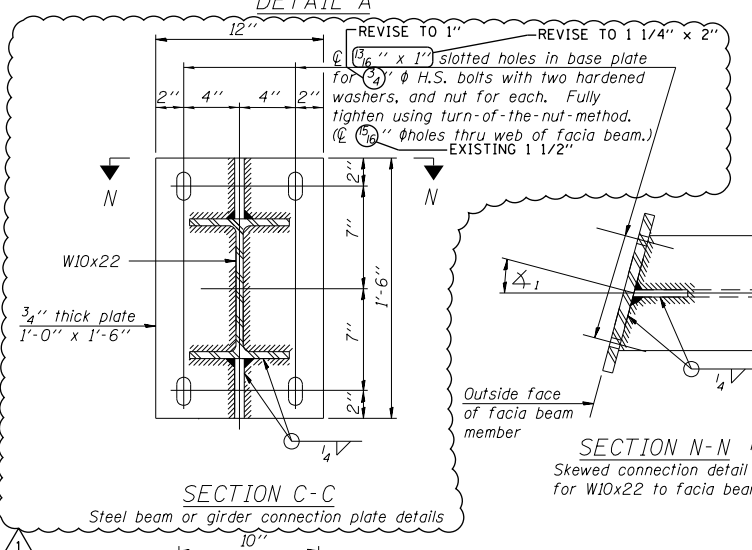
SECTION G-G



DETAIL B - WELDED W10x22 TO W6x12 CONNECTION

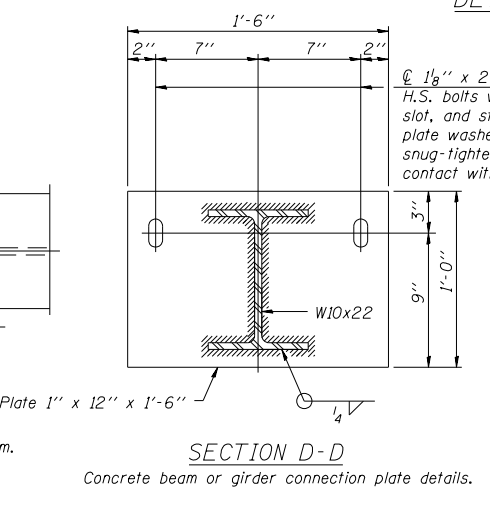


DETAIL B - ALTERNATE BOLTED W10x22 TO W6x12 CONNECTION

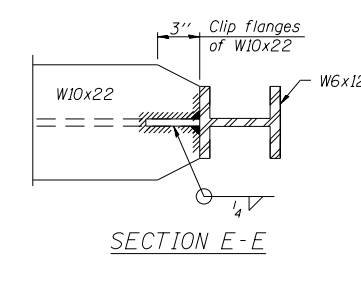


DETAIL A

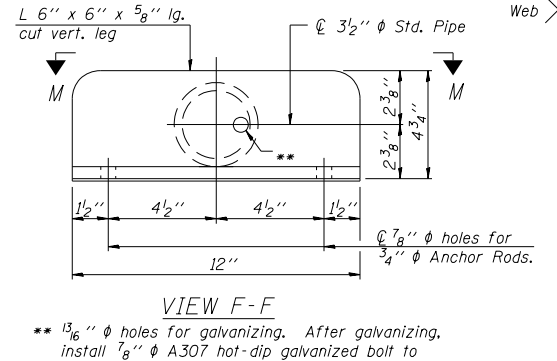
SECTION C-C
Steel beam or girder connection plate details



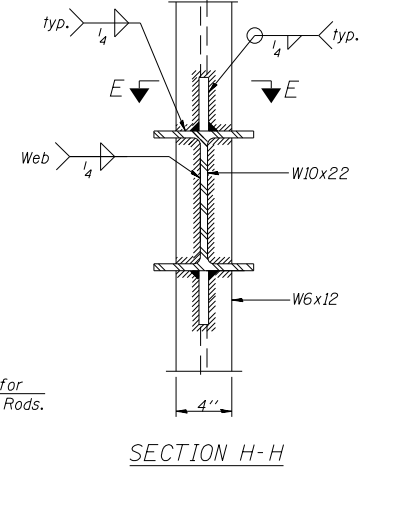
SECTION D-D
Concrete beam or girder connection plate details.



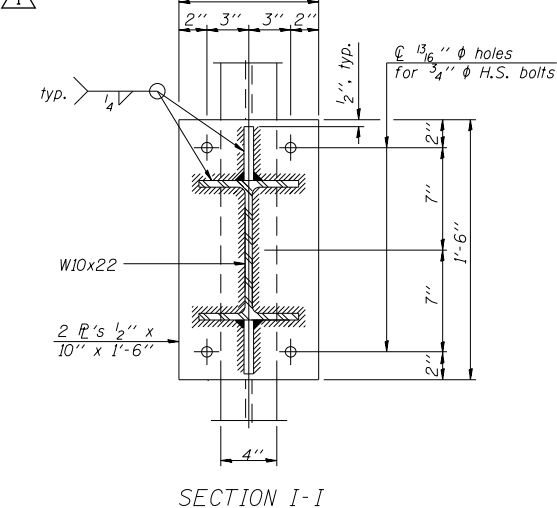
SECTION E-E



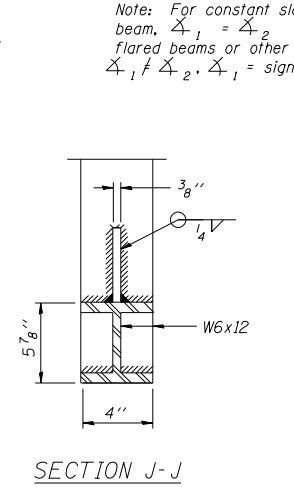
VIEW F-F



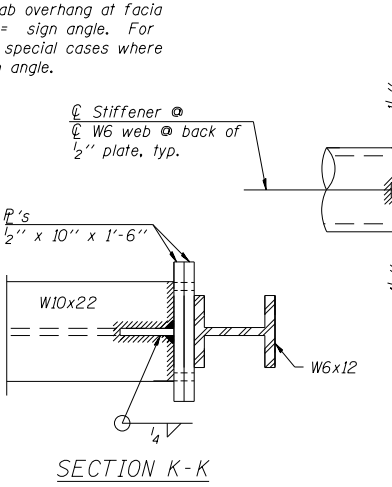
SECTION H-H



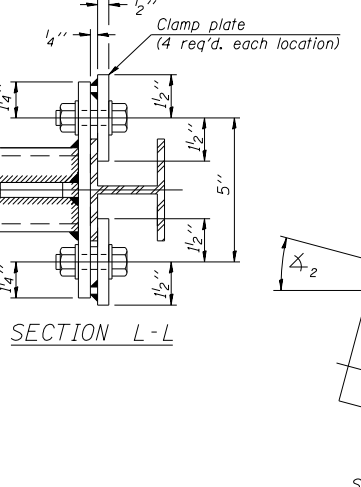
SECTION I-I



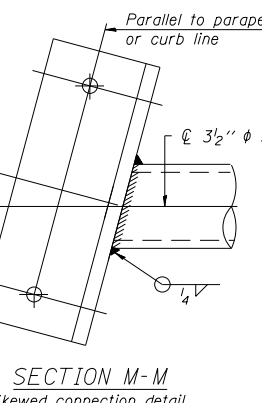
SECTION J-J



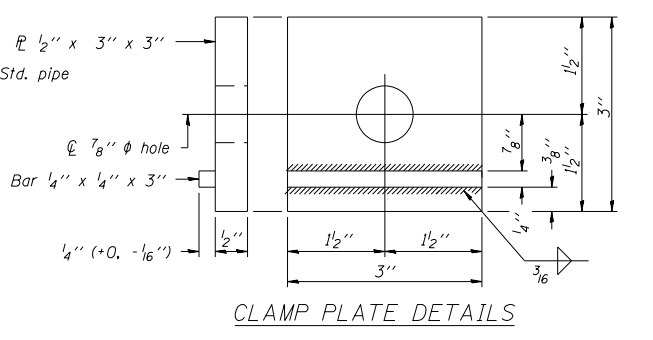
SECTION K-K



SECTION L-L



SECTION M-M
Skewed connection detail for 3/2\"/>



CLAMP PLATE DETAILS

Note: For constant slab overhang at fascia beam, $\Delta_1 = \Delta_2 =$ sign angle. For flared beams or other special cases where $\Delta_1 \neq \Delta_2$, $\Delta_1 =$ sign angle.

** 13/16\"/>

FILE NAME =	USER NAME = BAWtor.t	DESIGNED - JLV	REVISED - 10/31/2012
G:\CH11\0158\Road\Sheets\0160T35-SHT-ST\STRUCT-SIGNDETAILS.dgn		DRAWN - MNB	REVISED -
PLOT SCALE = 10.0000' / in.		CHECKED - RCB	REVISED -
PLOT DATE = 11/1/2012		DATE - 10/31/2012	REVISED -

F.A.P. RTE.	SECTION	COUNTY	TOTAL SHEETS	SHEET NO.
305	(1920.01,1518,2022&1922.4BIR)	COOK	919	331
FED. ROAD DIST. NO. 1 ILLINOIS FED. AID PROJECT			CONTRACT NO. 60T35	