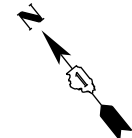
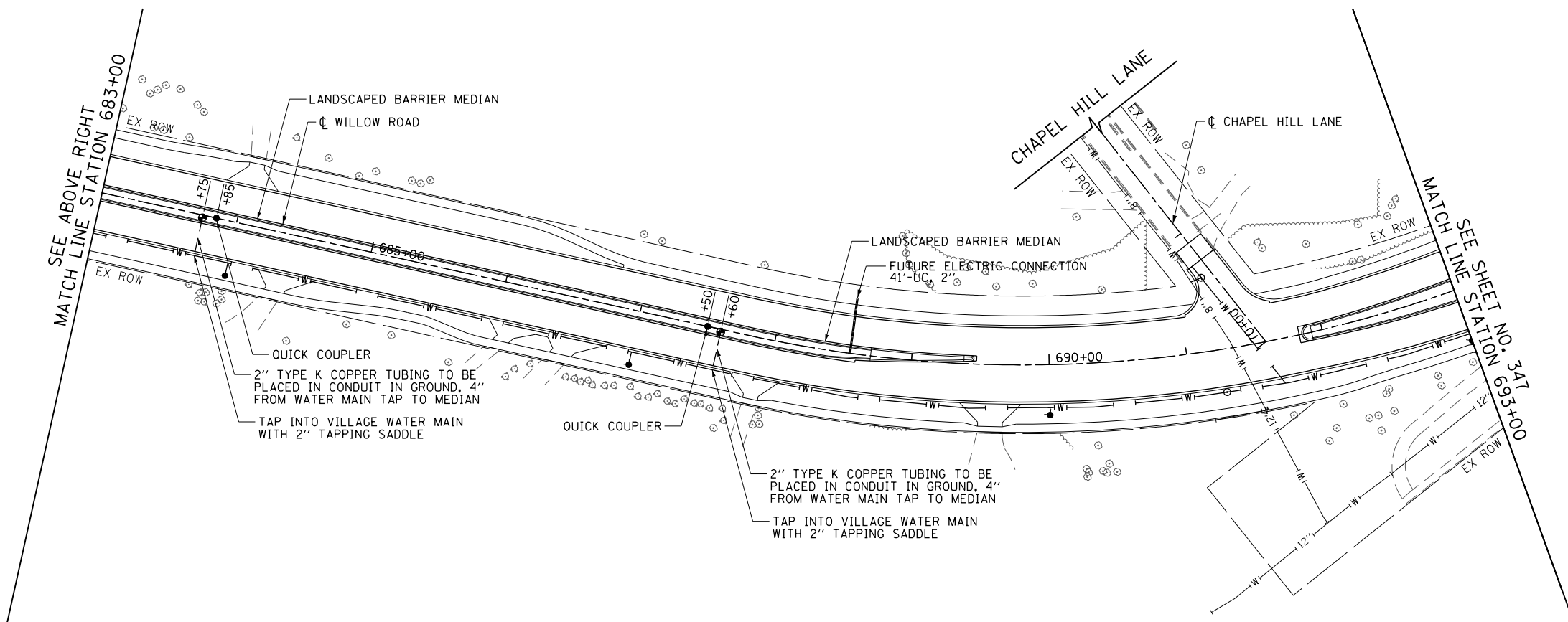


- IRRIGATION LEGEND**
- 10" VALVE IN VALVE BOX
  - CONTROLLER FOR VALVE IN VALVE BOX
  - 2" PVC
  - 1 1/2" PVC
  - 2" UG CONDUIT, GALVANIZED STEEL
  - SPRAY SPRINKLER
  - BACKFLOW PREVENTER IN ENCLOSURE
  - QUICK COUPLER



- NOTES**
1. ALL LABOR AND MATERIALS REQUIRED FOR INSTALLATION OF A COMPLETE IRRIGATION SYSTEM SHALL BE INCLUDED IN THE LUMP SUM CONTRACT PRICE FOR IRRIGATION SYSTEM.
  2. THE CONDUIT FOR FUTURE MEDIAN ELECTRIC CONNECTIONS WILL BE MEASURED FOR PAYMENT SEPARATELY.

|             |                      |                   |           |   |                                    |   |                             |             |              |                |  |
|-------------|----------------------|-------------------|-----------|---|------------------------------------|---|-----------------------------|-------------|--------------|----------------|--|
| FILE NAME = | USER NAME = BAWtor.t | DESIGNED - JLV    | REVISED - | <b>STATE OF ILLINOIS<br/>DEPARTMENT OF TRANSPORTATION</b> | <b>WILLOW ROAD IRRIGATION PLAN</b> | F.A.P. RTE.   | SECTION                     | COUNTY      | TOTAL SHEETS | SHEET NO.      |  |
|             |                      | DRAWN - KAL       | REVISED - |   |                                    | 305   | (1920.01,1518,2022&1922.4)R | COOK        | 919          | 346            |  |
|             |                      | CHECKED - RCB     | REVISED - |   |                                    | CONTRACT NO. 60T35                                  |                             |             |              |                |  |
|             |                      | DATE - 10/31/2012 | REVISED - |   |                                    | FED. ROAD DIST. NO. 1   ILLINOIS   FED. AID PROJECT |                             |             |              |                |  |
|             |                      |                   |           | SCALE: 1" = 50'   |                                    | SHEET NO. 346 OF 919 SHEETS                         |                             | STA. 672+00 |              | TO STA. 693+00 |  |