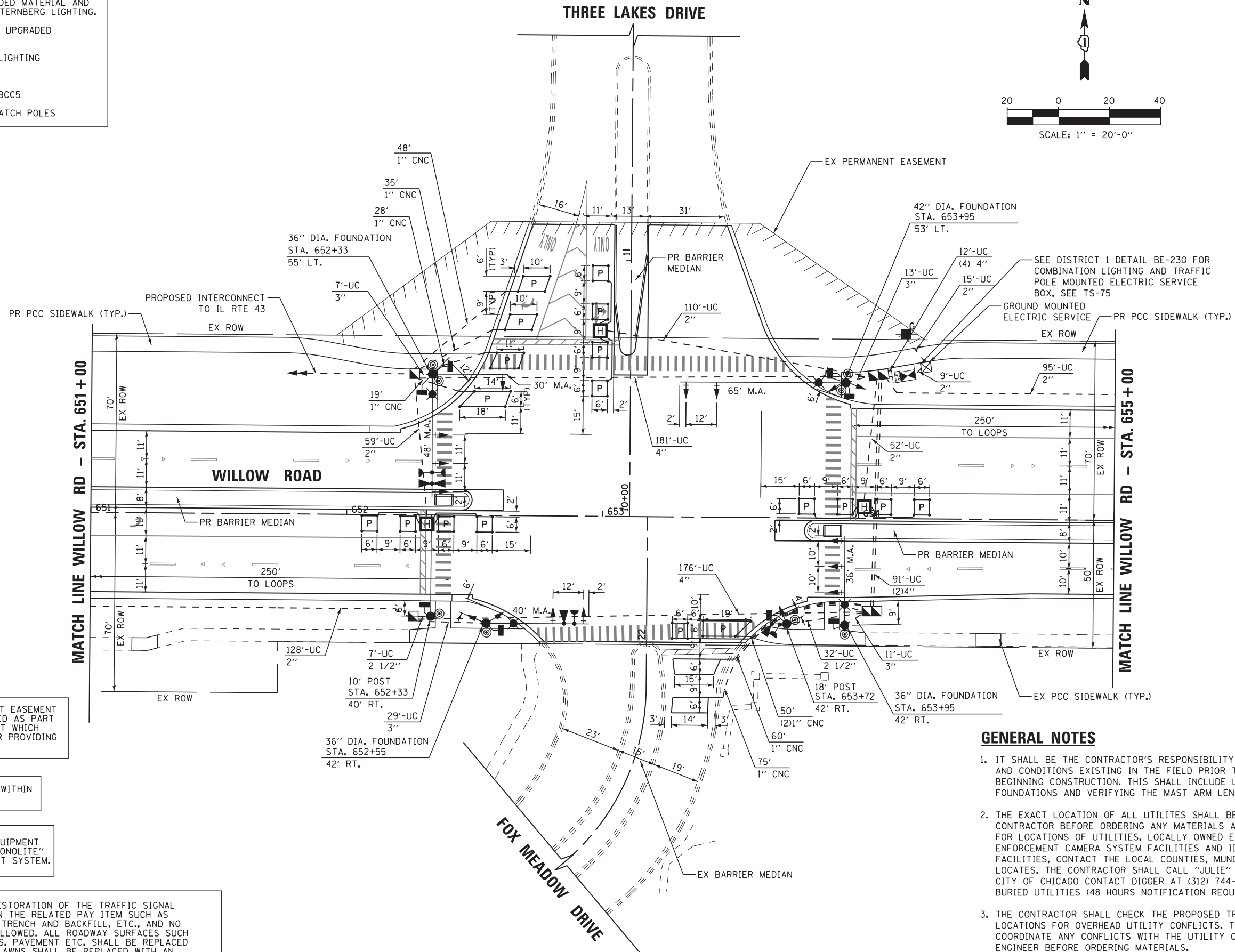
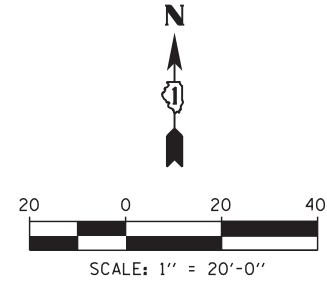


ALL TRAFFIC SIGNAL POLES AT THIS INTERSECTION SHALL BE CONSTRUCTED OF UPGRADED MATERIAL AND SPECIFICATION AS PRODUCED BY STERNBERG LIGHTING.

THE SPECIFICATIONS FOR THE UPGRADED MATERIAL ARE AS FOLLOWS:

MANUFACTURER: STERNBERG LIGHTING  
 COLOR: VERDE GREEN  
 BASE PLATE: BIRMINGHAM  
 POLES: STRAIGHT FLUTE  
 POST CENTER CAP: BCC OR BCC5  
 ROADWAY ARM: CA  
 STRAPS: VERDE GREEN TO MATCH POLES



THERE IS AN EXISTING PERMANENT EASEMENT FOR FOX MEADOW DRIVE DEDICATED AS PART OF THE FOX MEADOW DEVELOPMENT WHICH ALLOWS INGRESS AND EGRESS FOR PROVIDING MUNICIPAL SERVICES.

ALL LOOPS SHALL BE PERFORMED WITHIN LIMITS OF RECONSTRUCTION

THE TRAFFIC SIGNAL CONTROL EQUIPMENT FOR THIS PROJECT SHALL BE "ECONOLITE" TO MATCH THE EXISTING ADJACENT SYSTEM.

**RESTORATION OF WORK AREA.** RESTORATION OF THE TRAFFIC SIGNAL WORK AREA SHALL BE INCLUDED IN THE RELATED PAY ITEM SUCH AS FOUNDATION, CONDUIT, HANDHOLE, TRENCH AND BACKFILL, ETC., AND NO EXTRA COMPENSATION SHALL BE ALLOWED. ALL ROADWAY SURFACES SUCH AS SHOULDERS, MEDIAN, SIDEWALKS, PAVEMENT ETC. SHALL BE REPLACED IN KIND. ALL DAMAGE TO MOWED LAWNS SHALL BE REPLACED WITH AN APPROVED SOD, AND ALL DAMAGE TO UNMOWED FIELDS SHALL BE SEEDED IN ACCORDANCE WITH STANDARD SPECIFICATIONS 252 AND 250 RESPECTIVELY.

**GENERAL NOTES**

- IT SHALL BE THE CONTRACTOR'S RESPONSIBILITY TO VERIFY ALL DIMENSIONS AND CONDITIONS EXISTING IN THE FIELD PRIOR TO ORDERING MATERIALS AND BEGINNING CONSTRUCTION. THIS SHALL INCLUDE LOCATING THE MAST ARM FOUNDATIONS AND VERIFYING THE MAST ARM LENGTHS.
- THE EXACT LOCATION OF ALL UTILITES SHALL BE FIELD VERIFIED BY THE CONTRACTOR BEFORE ORDERING ANY MATERIALS AND STARTING ANY WORK. FOR LOCATIONS OF UTILITIES, LOCALLY OWNED EQUIPMENT, LEASED ENFORCEMENT CAMERA SYSTEM FACILITIES AND IDOT UNDERGROUND FACILITIES, CONTACT THE LOCAL COUNTIES, MUNICIPALITIES AND IDOT FOR LOCATES. THE CONTRACTOR SHALL CALL "JULIE" AT (800) 892-0123 OR 811, IN THE CITY OF CHICAGO CONTACT DIGGER AT (312) 744-7000 FOR FIELD LOCATIONS OF BURIED UTILITIES (48 HOURS NOTIFICATION REQUIRED).
- THE CONTRACTOR SHALL CHECK THE PROPOSED TRAFFIC SIGNAL EQUIPMENT LOCATIONS FOR OVERHEAD UTILITY CONFLICTS. THE CONTRACTOR SHALL COORDINATE ANY CONFLICTS WITH THE UTILITY COMPANIES AND THE RESIDENT ENGINEER BEFORE ORDERING MATERIALS.
- THE CONTRACTOR SHALL COORDINATE CONSTRUCTION ACTIVITIES WITH UTILITY COMPANIES, LOCAL GOVERNMENT AGENCIES AND IDOT.

FILE NAME =	USER NAME = \$USER\$	DESIGNED - KMM	REVISED -	<b>STATE OF ILLINOIS DEPARTMENT OF TRANSPORTATION</b>	<b>TRAFFIC SIGNAL MODERNIZATION PLAN WILLOW ROAD AT THREE LAKES DRIVE /FOX MEADOW DRIVE</b>	F.A. RTE.	SECTION	COUNTY	TOTAL SHEETS	SHEET NO.	
N:\Projects\3\12027\Design\CAD\Sheet Files	D160T35\w\lproTL-1.dgn	DRAWN - CDC	REVISED -			305	(1920, 01, 1518, 2022 & 1922, 4BR)	COOK	919	371	
	PLOT SCALE = \$SCALE\$	CHECKED - JDH	REVISED -			CONTRACT NO. 60T35					
	PLOT DATE = 10/30/2012	DATE - 10/31/2012	REVISED -			ILLINOIS FED. AID PROJECT					