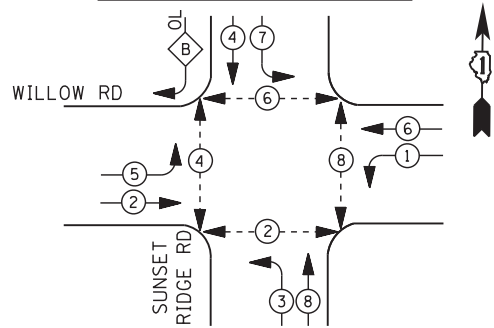


**SCHEDULE OF QUANTITIES**

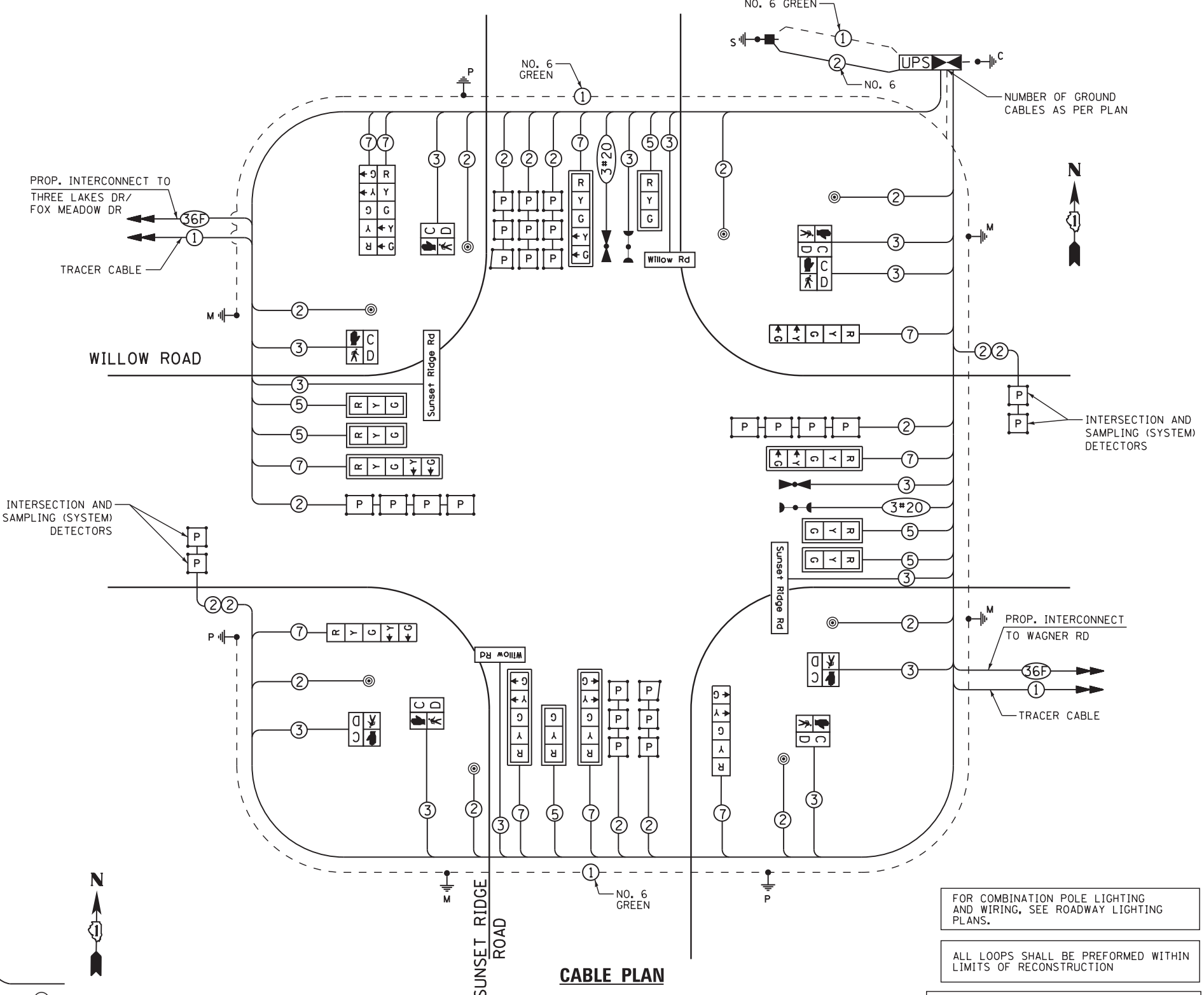
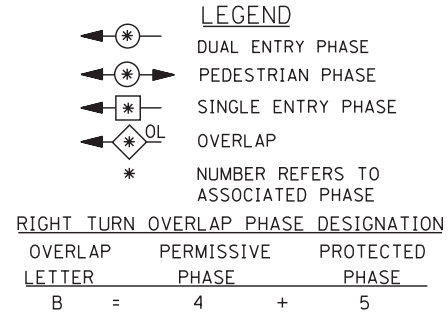
QUANTITY	UNIT	ITEM
1	EACH	SERVICE INSTALLATION - POLE MOUNTED
732	FOOT	UNDERGROUND CONDUIT, GALVANIZED STEEL, 2" DIA.
52	FOOT	UNDERGROUND CONDUIT, GALVANIZED STEEL, 2 1/2" DIA.
75	FOOT	UNDERGROUND CONDUIT, GALVANIZED STEEL, 3" DIA.
411	FOOT	UNDERGROUND CONDUIT, GALVANIZED STEEL, 4" DIA.
4	EACH	HANDHOLE
4	EACH	HEAVY-DUTY HANDHOLE
2	EACH	DOUBLE HANDHOLE
1	EACH	TRANSCEIVER - FIBER OPTIC
1274	FOOT	ELECTRIC CABLE IN CONDUIT, SIGNAL NO. 14 2C
1635	FOOT	ELECTRIC CABLE IN CONDUIT, SIGNAL NO. 14 3C
1197	FOOT	ELECTRIC CABLE IN CONDUIT, SIGNAL NO. 14 5C
1985	FOOT	ELECTRIC CABLE IN CONDUIT, SIGNAL NO. 14 7C
2460	FOOT	ELECTRIC CABLE IN CONDUIT, LEAD-IN, NO. 14 1 PAIR
60	FOOT	ELECTRIC CABLE IN CONDUIT, SERVICE, NO. 6 2 C
669	FOOT	ELECTRIC CABLE IN CONDUIT, EQUIPMENT GROUNDING CONDUCTOR, NO. 6 1C
12	FOOT	CONCRETE FOUNDATION, TYPE A
4	FOOT	CONCRETE FOUNDATION, TYPE C
48	FOOT	CONCRETE FOUNDATION, TYPE E 36-INCH DIAMETER
6	EACH	SIGNAL HEAD, LED, 1-FACE, 3-SECTION, MAST-ARM MOUNTED
3	EACH	SIGNAL HEAD, LED, 1-FACE, 5-SECTION, BRACKET MOUNTED
5	EACH	SIGNAL HEAD, LED, 1-FACE, 5-SECTION, MAST-ARM MOUNTED
1	EACH	SIGNAL HEAD, LED, 2-FACE, 5 SECTION, BRACKET MOUNTED
6	EACH	PEDESTRIAN SIGNAL HEAD, LED, 1-FACE, BRACKET MOUNTED WITH COUNTDOWN TIMER
1	EACH	PEDESTRIAN SIGNAL HEAD, LED, 2-FACE, BRACKET MOUNTED WITH COUNTDOWN TIMER
11	EACH	TRAFFIC SIGNAL BACKPLATE, LOUVERED, ALUMINUM
11	EACH	INDUCTIVE LOOP DETECTOR
1007	FOOT	PERFORMED DETECTOR LOOP
* 2	EACH	LIGHT DETECTOR
* 1	EACH	LIGHT DETECTOR AMPLIFIER
8	EACH	PEDESTRIAN PUSH-BUTTON
1	EACH	TEMPORARY TRAFFIC SIGNAL INSTALLATION
1	EACH	REMOVE EXISTING TRAFFIC SIGNAL EQUIPMENT
10	EACH	REMOVE EXISTING HANDHOLE
9	EACH	REMOVE EXISTING CONCRETE FOUNDATION
* 305	FOOT	EMERGENCY VEHICLE PRIORITY SYSTEM LINE SENSOR CABLE, NO 20 3/C
1	EACH	FULL-ACTUATED CONTROLLER AND TYPE IV CABINET, SPECIAL
1	EACH	UNINTERRUPTIBLE POWER SUPPLY, SPECIAL
1	EACH	STEEL COMBINATION MAST ARM ASSEMBLY AND POLE 34 FT. (SPECIAL)
1	EACH	STEEL COMBINATION MAST ARM ASSEMBLY AND POLE 36 FT. (SPECIAL)
1	EACH	STEEL COMBINATION MAST ARM ASSEMBLY AND POLE 44 FT. (SPECIAL)
1	EACH	STEEL COMBINATION MAST ARM ASSEMBLY AND POLE 46 FT. (SPECIAL)
1	EACH	TEMPORARY TRAFFIC SIGNAL TIMING
3	EACH	TRAFFIC SIGNAL POST, ALUMINUM 16 FT. (SPECIAL)
* 4	EACH	ILLUMINATED STREET NAME SIGN

\* 100% VILLAGE OF NORTHFIELD COST

**CONTROLLER SEQUENCE**



**PHASE DESIGNATION DIAGRAM**



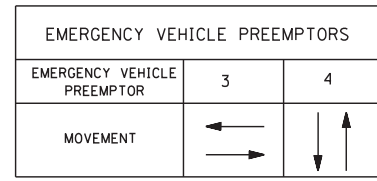
**CABLE PLAN**

FOR COMBINATION POLE LIGHTING AND WIRING, SEE ROADWAY LIGHTING PLANS.

ALL LOOPS SHALL BE PERFORMED WITHIN LIMITS OF RECONSTRUCTION

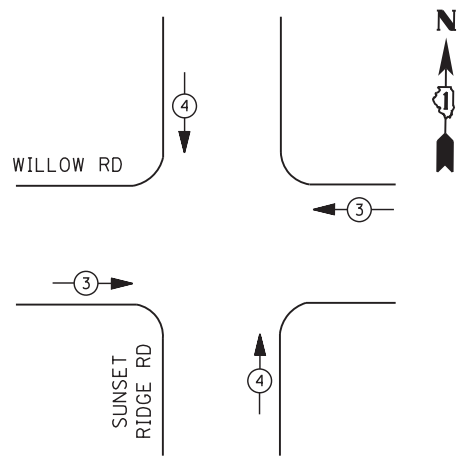
THE TRAFFIC SIGNAL CONTROL EQUIPMENT FOR THIS PROJECT SHALL BE "ECONOLITE" TO MATCH THE EXISTING ADJACENT SYSTEM.

RESTORATION OF WORK AREA. RESTORATION OF THE TRAFFIC SIGNAL WORK AREA SHALL BE INCLUDED IN THE RELATED PAY ITEM SUCH AS FOUNDATION, CONDUIT, HANDHOLE, TRENCH AND BACKFILL, ETC., AND NO EXTRA COMPENSATION SHALL BE ALLOWED. ALL ROADWAY SURFACES SUCH AS SHOULDERS, MEDIAN, SIDEWALKS, PAVEMENT ETC. SHALL BE REPLACED IN KIND. ALL DAMAGE TO MOWED LAWNS SHALL BE REPLACED WITH AN APPROVED SOD, AND ALL DAMAGE TO UNMOWED FIELDS SHALL BE SEEDED IN ACCORDANCE WITH STANDARD SPECIFICATIONS 252 AND 250 RESPECTIVELY.



THE END OF THE TRACER CABLE SHALL BE CONTINUOUS AND EXTEND INTO THE CONTROLLER CABINET.

**EMERGENCY VEHICLE PREEMPTION SEQUENCE**



I. D. O. T.  
 TRAFFIC SIGNAL INSTALLATION  
 ELECTRICAL SERVICE REQUIREMENTS

TYPE	NO. LAMPS	WATTAGE		% OPERATIONS	TOTAL WATTAGE
		INCAND.	LED		
SIGNAL (RED)	16	135	17	0.50	136
(YELLOW)	16	135	25	0.25	100
(GREEN)	16	135	15	0.25	60
ARROW	20	135	12	0.10	24
PED. SIGNAL	8	90	25	1.00	200
CONTROLLER	1	100	100	1.00	100
ILLUM. SIGN	4	--	90	0.50	180
VIDEO SYSTEM		150	-	1.00	--
TOTAL =					800

ENERGY COSTS- BILLED TO: IDOT - DISTRICT 1  
 201 W. CENTER CT.  
 SCHAUMBURG, IL 60196

ENERGY SUPPLY - CONTACT COMED  
 PHONE 630-723-2128