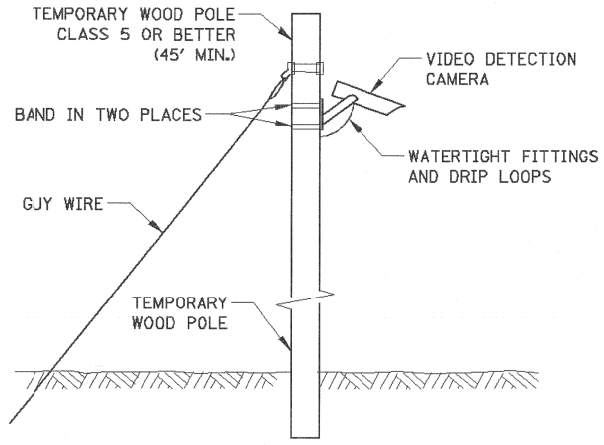
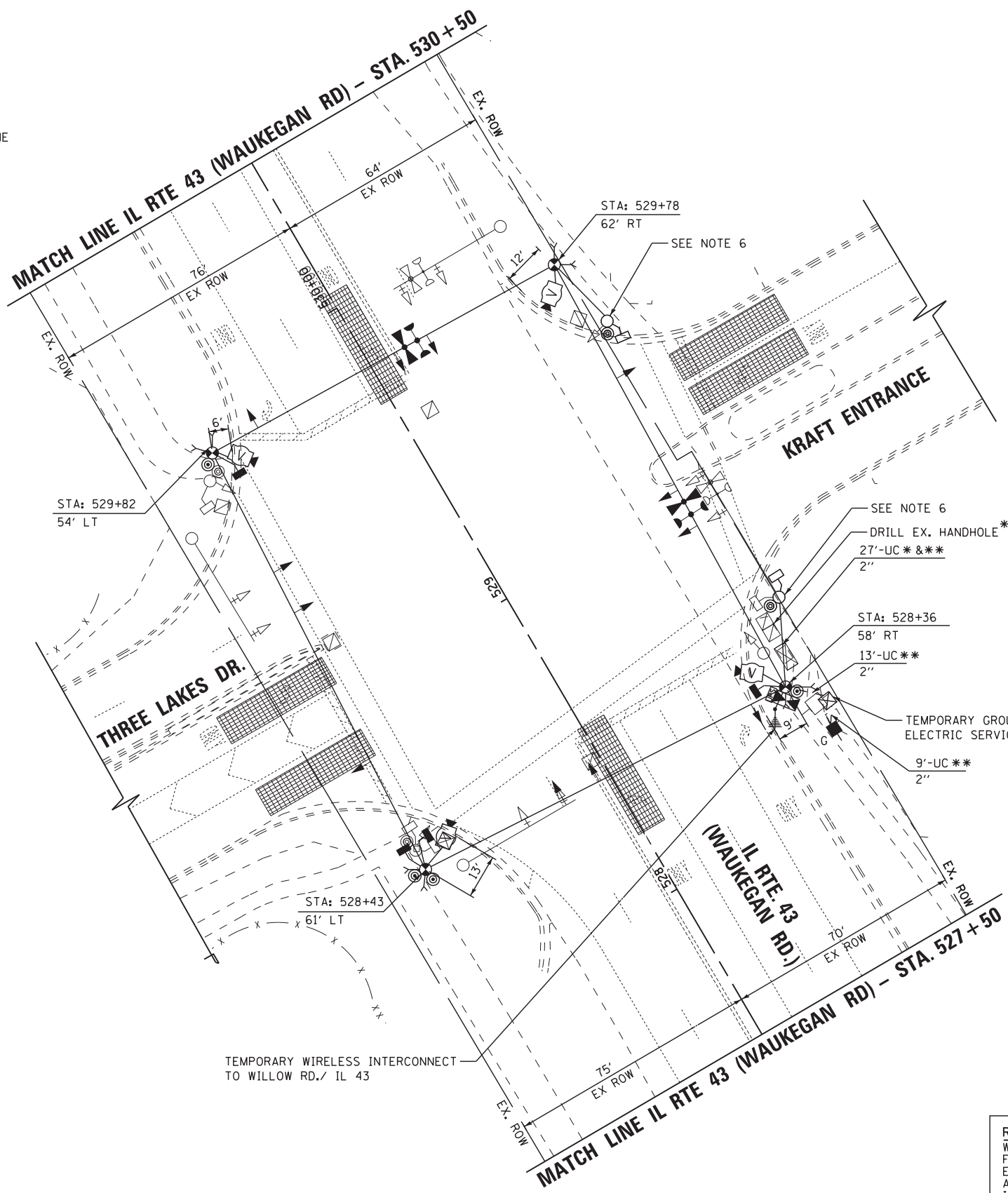
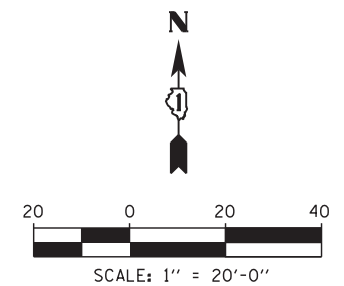


GENERAL NOTES

1. IT SHALL BE THE CONTRACTOR'S RESPONSIBILITY TO VERIFY ALL DIMENSIONS AND CONDITIONS EXISTING IN THE FIELD PRIOR TO ORDERING MATERIALS AND BEGINNING CONSTRUCTION. THIS SHALL INCLUDE LOCATING THE MAST ARM FOUNDATIONS AND VERIFYING THE MAST ARM LENGTHS.
2. THE EXACT LOCATION OF ALL UTILITES SHALL BE FIELD VERIFIED BY THE CONTRACTOR BEFORE ORDERING ANY MATERIALS AND STARTING ANY WORK. FOR LOCATIONS OF UTILITIES, LOCALLY OWNED EQUIPMENT, LEASED ENFORCEMENT CAMERA SYSTEM FACILITIES AND IDOT UNDERGROUND FACILITIES, CONTACT THE LOCAL COUNTIES, MUNICIPALITIES AND IDOT FOR LOCATES. THE CONTRACTOR SHALL CALL "JULIE" AT (800) 892-0123 OR 811, IN THE CITY OF CHICAGO CONTACT DIGGER AT (312) 744-7000 FOR FIELD LOCATIONS OF BURIED UTILITIES (48 HOURS NOTIFICATION REQUIRED).
3. THE CONTRACTOR SHALL CHECK THE PROPOSED TRAFFIC SIGNAL EQUIPMENT LOCATIONS FOR OVERHEAD UTILITY CONFLICTS. THE CONTRACTOR SHALL COORDINATE ANY CONFLICTS WITH THE UTILITY COMPANIES AND THE RESIDENT ENGINEER BEFORE ORDERING MATERIALS.
4. THE CONTRACTOR SHALL COORDINATE CONSTRUCTION ACTIVITIES WITH UTILITY COMPANIES, LOCAL GOVERNMENT AGENCIES AND IDOT.
5. ALL EXISTING SIGNAL HEADS SHALL BE BAGGED & DISCONNECTED DURING TEMPORARY TRAFFIC SIGNAL OPERATIONS. EXCEPT FOR THE PEDESTRIAN SIGNAL HEADS AND PUSHBUTTONS FOR THE KRAFT ENTRANCE CROSSWALK. THIS WORK SHALL BE INCLUDED IN THE CONTRACT UNIT PRICE FOR TEMPORARY TRAFFIC SIGNAL INSTALLATION.
6. TEMPORARY AERIAL CABLES SHALL BE PROVIDED BETWEEN THE WOOD POLE AND EXISTING SIGNAL POST AS SHOWN TO ACTIVATE THE EXISTING PEDESTRIAN HEADS AND PUSHBUTTONS FOR THE KRAFT ENTRANCE CROSSWALK.

* NOTE: CONTRACTOR SHALL PULL THE EXISTING FIBER OPTIC CABLE FROM THE EXISTING CONTROLLER TO THE DOUBLE HANDHOLE AND REINSTALL TO THE TEMPORARY CONTROLLER IN ORDER TO MAINTAIN INTERCONNECT TO IL 43/FOUNDERS TO THE NORTH. THE COST OF THE 2" CONDUIT AND TEMPORARY INTERCONNECT SHALL BE INCLUDED IN THE COST FOR TEMPORARY TRAFFIC SIGNAL INSTALLATION. THE FIBER OPTIC CABLE SHALL BE INSTALLED TO THE EXISTING CONTROLLER AS THE TEMPORARY TRAFFIC SIGNAL IS BEING REMOVED.

** THE COST OF THE 2" CONDUIT AND TEMPORARY GROUND MOUNTED ELECTRIC SERVICE AND DRILL EXISTING HANDHOLE SHALL BE INCLUDED IN THE COST FOR THE TEMPORARY TRAFFIC SIGNAL INSTALLATION.



TEMPORARY VIDEO DETECTION MOUNTING DETAIL
 (NOT TO SCALE)

THE CONTRACTOR SHALL INSTALL A WOOD SUPPORT PLATFORM AS SHOWN ON THE DISTRICT 1 SIGNAL DETAIL SHEETS FOR BOTH THE CONTROLLER CABINET AND UPS.

THE TEMPORARY TRAFFIC SIGNAL CONTROL EQUIPMENT FOR THIS PROJECT SHALL BE "ECONOLITE" TO MATCH THE EXISTING ADJACENT SYSTEM.

RESTORATION OF WORK AREA, RESTORATION OF THE TRAFFIC SIGNAL WORK AREA SHALL BE INCLUDED IN THE RELATED PAY ITEM SUCH AS FOUNDATION, CONDUIT, HANDHOLE, TRENCH AND BACKFILL, ETC., AND NO EXTRA COMPENSATION SHALL BE ALLOWED. ALL ROADWAY SURFACES SUCH AS SHOULDERS, MEDIAN, SIDEWALKS, PAVEMENT ETC. SHALL BE REPLACED IN KIND. ALL DAMAGE TO MOWED LAWNS SHALL BE REPLACED WITH AN APPROVED SOD, AND ALL DAMAGE TO UNMOWED FIELDS SHALL BE SEEDED IN ACCORDANCE WITH STANDARD SPECIFICATIONS 252 AND 250 RESPECTIVELY.

FILE NAME =	USER NAME = \$USER\$	DESIGNED - KMM	REVISED -	STATE OF ILLINOIS DEPARTMENT OF TRANSPORTATION				TEMPORARY TRAFFIC SIGNAL INSTALLATION MAINTENANCE OF TRAFFIC STAGE 1 ILLINOIS ROUTE 43 (WAUKEGAN ROAD) AT THREE LAKES DRIVE				F.A. RTE.	SECTION	COUNTY	TOTAL SHEETS	SHEET NO.
N:\Projects\312027\Design\CAD\Sheet Files\0160135\wa43tempTL-1.dgn	PLOT SCALE = \$SCALE\$	DRAWN - CDC	REVISED -									305	(1920, .01, 1518, 2022 & 1922, 4BIR	COOK	919	402
	PLOT DATE = 10/30/2012	CHECKED - JDH	REVISED -	SCALE: 1"=20'				SHEET NO. 1 OF 2 SHEETS				CONTRACT NO. 60T35				
		DATE - 10/31/2012	REVISED -	STA. TO STA.				ILLINOIS FED. AID PROJECT								