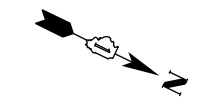
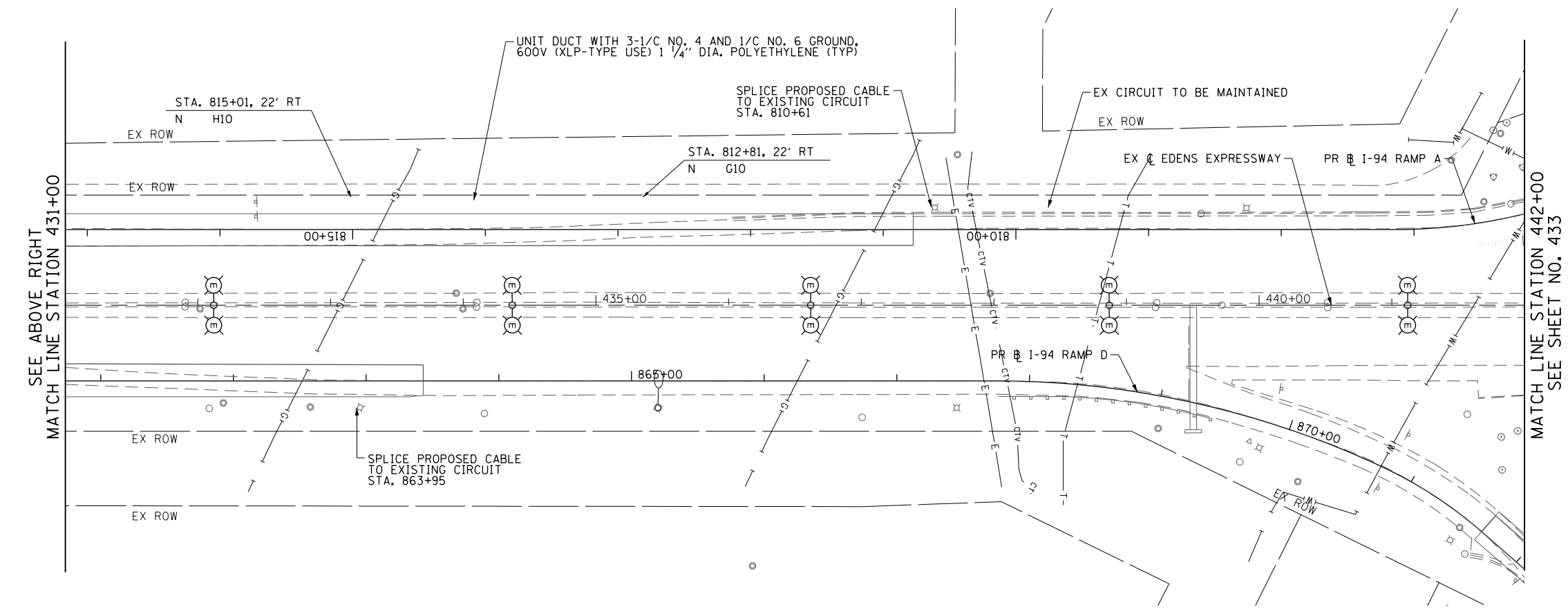


- NOTES:**
- SEE SHEET NO. 424 FOR LEGEND AND GENERAL NOTES.
 - THE COST TO SPLICE PROPOSED CABLE TO EXISTING CIRCUITS AT POLE HANDHOLE SHALL BE INCLUDED IN THE COST FOR UNIT DUCT.



FILE NAME = G:\CH11\0158\Road\Road-CD\Lighting\0160135-SHT-LIGHT-09.dgn	USER NAME = BAW\ort	DESIGNED - SRF	REVISED -
		DRAWN - AJP	REVISED -
		CHECKED - SRF	REVISED -
		DATE - 10/31/2012	REVISED -

**STATE OF ILLINOIS
DEPARTMENT OF TRANSPORTATION**

**LIGHTING PLAN
INTERSTATE 94**

SCALE: 1" = 50' SHEET NO. 432 OF 919 SHEETS STA. 420+00 TO STA. 442+00

F.A.P. RTE.	SECTION	COUNTY	TOTAL SHEETS	SHEET NO.
305	(1920.01,1518,2022&1922.4)R	COOK	919	432
FED. ROAD DIST. NO. 1 ILLINOIS FED. AID PROJECT			CONTRACT NO. 60T35	