

TYPE "T" HINGES REQUIRED ONLY ON ON HEAVY DUTY SPECIAL.

CONDUIT TYP.

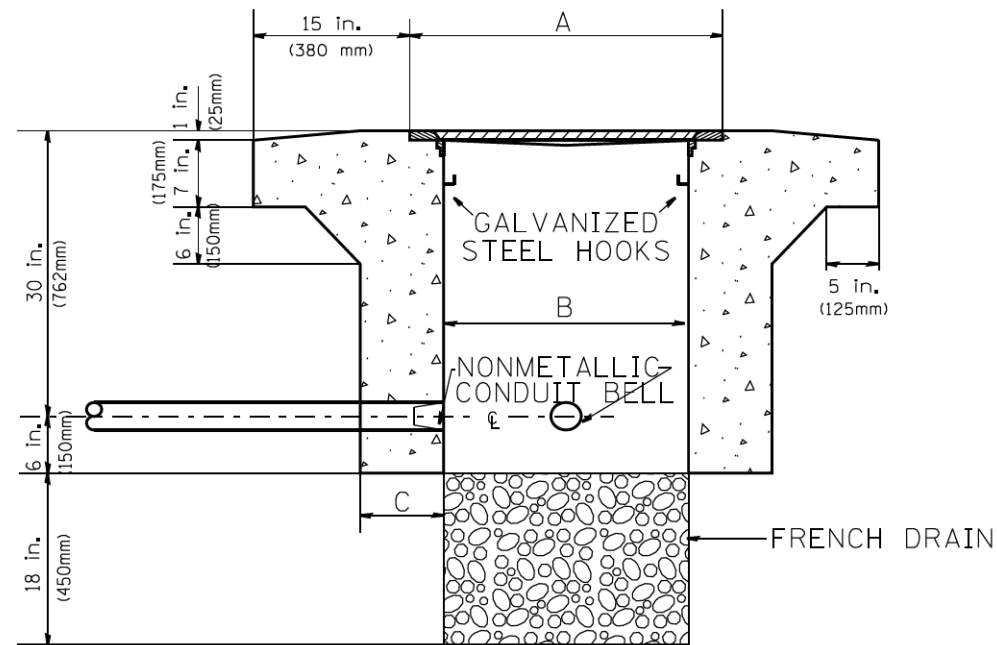
TYPE "G" HANDLE FOR BOTH HDHH AND HDHH SPECIAL

PLAN

HEAVY DUTY HANDHOLE MINIMUM DIMENSIONS (UNHINGED)

A	28" (711 mm)
B	22" (559 mm)
C	8" (200 mm)

(FRAME AND COVER 260 LBS. (118 Kg.) MIN.)



ELEVATION

HEAVY DUTY HANDHOLE SPECIAL MINIMUM DIMENSIONS

A	31.5" (800 mm)
B	30.0" (762 mm)
C	10.0" (250 mm)

(FRAME AND COVER 405 LBS. (184 Kg. (405))

PC CONCRETE - HEAVY DUTY HAND HOLE

FILE NAME = c:\pwork\p\sdot\mezag\0287541\TSCYP.dgn	USER NAME = mezag	DESIGNED - R.L.	REVISIONS - 04/97	STATE OF ILLINOIS DEPARTMENT OF TRANSPORTATION TRAFFIC SYSTEMS CENTER	PC CONCRETE - HEAVY DUTY HAND HOLE			F.A. RTE.	SECTION	COUNTY	TOTAL SHEETS	SHEET NO.
PLOT SCALE = 100.0000 ' / in.	CHECKED - R.L.	REVISIONS -	SCALE: NONE		SHEET NO.	OF	SHEETS	STA.	TO STA.	CONTRACT NO.		
PLOT DATE = 6/11/2012	DATE - 09/11/96	REVISIONS -	FED. ROAD DIST. NO.			ILLINOIS FED. AID PROJECT						
					TRAFFIC SYSTEMS CENTER (TY-1TSC-400#15)							

FILE NAME = G:\CH11\0158\Road\Sheets\0160T35-SHT-LOOP-07.dgn	USER NAME = BAW\ort	DESIGNED - JLV	REVISIONS -	STATE OF ILLINOIS DEPARTMENT OF TRANSPORTATION	DETECTOR LOOP DETAILS			F.A.P. RTE.	SECTION	COUNTY	TOTAL SHEETS	SHEET NO.		
PLOT SCALE = 40.0000 ' / in.	CHECKED - RCB	REVISIONS -	SCALE: N.T.S		SHEET NO.	OF	919	SHEETS	305 (1920.01,1518,2022&1922.4B)R			COOK	919	445
PLOT DATE = 11/1/2012	DATE - 10/31/2012	REVISIONS -	FED. ROAD DIST. NO. 1			ILLINOIS FED. AID PROJECT								
					CONTRACT NO. 60T35									