

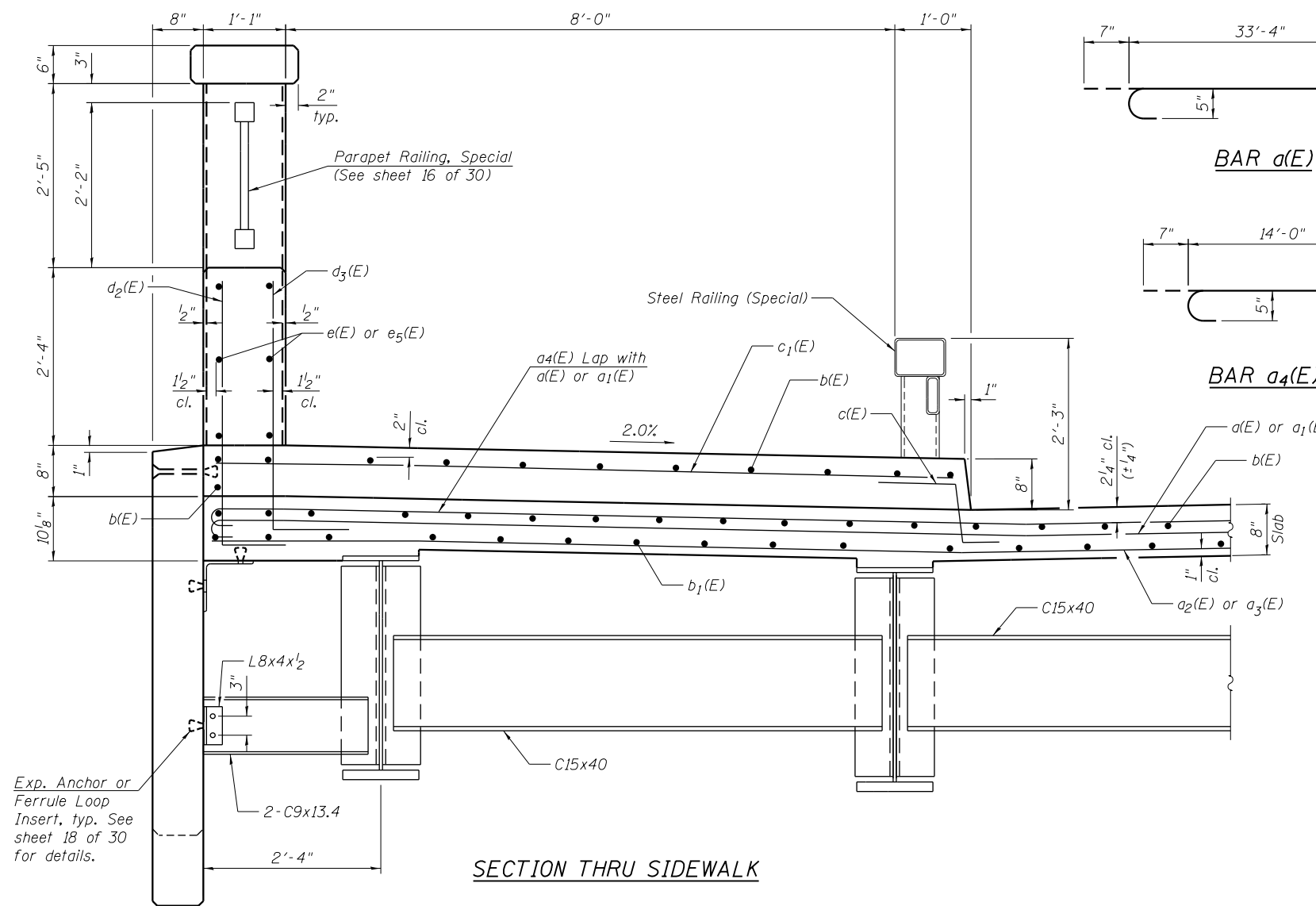
**SUPERSTRUCTURE
BILL OF MATERIAL**

Bar	No.	Size	Length	Shape
a(E)	170	#5	33'-11"	U
a ₁ (E)	170	#5	38'-11"	U
a ₂ (E)	103	#5	33'-4"	—
a ₃ (E)	103	#5	38'-4"	—
a ₄ (E)	340	#5	14'-7"	U
b(E)	432	#5	23'-6"	—
b ₁ (E)	231	#5	30'-3"	—
c(E)	172	#5	2'-4"	┌
c ₁ (E)	172	#5	9'-9"	—
c ₂ (E)	86	#5	7'-7"	—
c ₃ (E)	172	#5	1'-7"	└
d(E)	72	#5	7'-4"	┌
d ₁ (E)	72	#6	7'-6"	┌
d ₂ (E)	128	#5	4'-5"	┌
d ₃ (E)	128	#6	4'-7"	┌
e(E)	84	#5	9'-11"	—
e ₁ (E)	72	#5	7'-7"	□
e ₅ (E)	12	#5	12'-9"	—
m(E)	10	#6	33'-3"	—
m ₁ (E)	10	#6	38'-3"	—
m ₂ (E)	32	#6	10'-7"	—
m ₃ (E)	16	#6	6'-5"	—
m ₄ (E)	4	#6	2'-0"	—
m ₅ (E)	8	#6	7'-6"	—
m ₆ (E)	4	#6	7'-8"	—
m ₇ (E)	4	#6	9'-5"	—
m ₈ (E)	2	#6	3'-11"	—
s(E)	154	#5	6'-10"	└
s ₁ (E)	136	#4	10'-2"	□
v ₁ (E)	150	#5	3'-8"	┌
Concrete Superstructure			Cu. Yd.	294.0
Bridge Deck Grooving			Sq. Yd.	413
Form Liner Textured Surface			Sq. Ft.	1130
Protective Coat			Sq. Yd.	770
Reinforcement Bars, Epoxy Coated			Pound	55,780
Parapet Railing, Special			Foot	118

MINIMUM BAR LAP

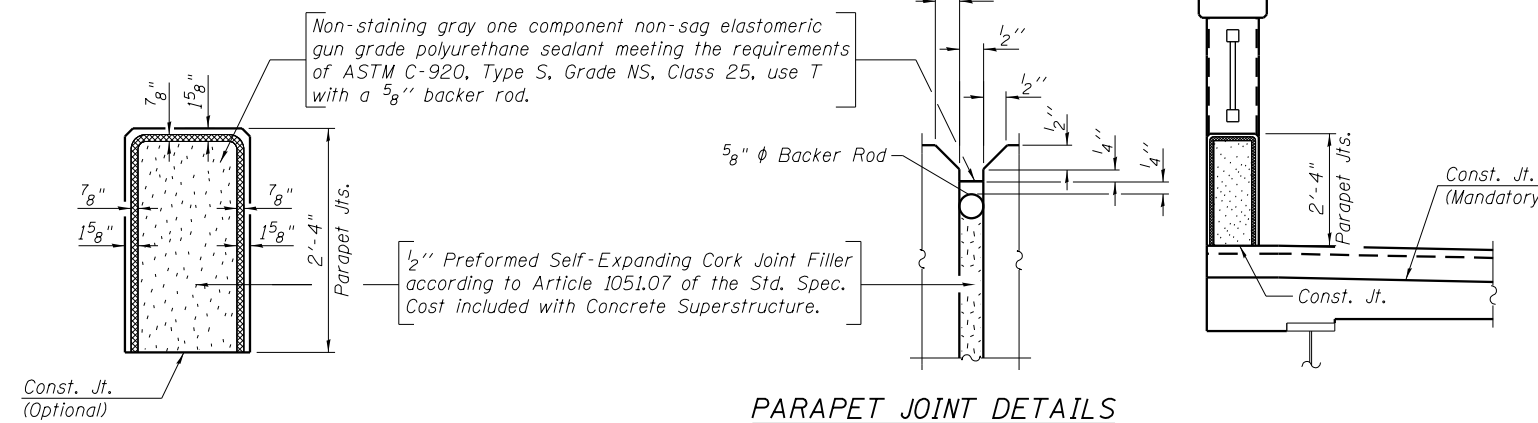
#5 bar = 3'-3"

Note:
For parapet joint locations,
see sheet 16 of 30.

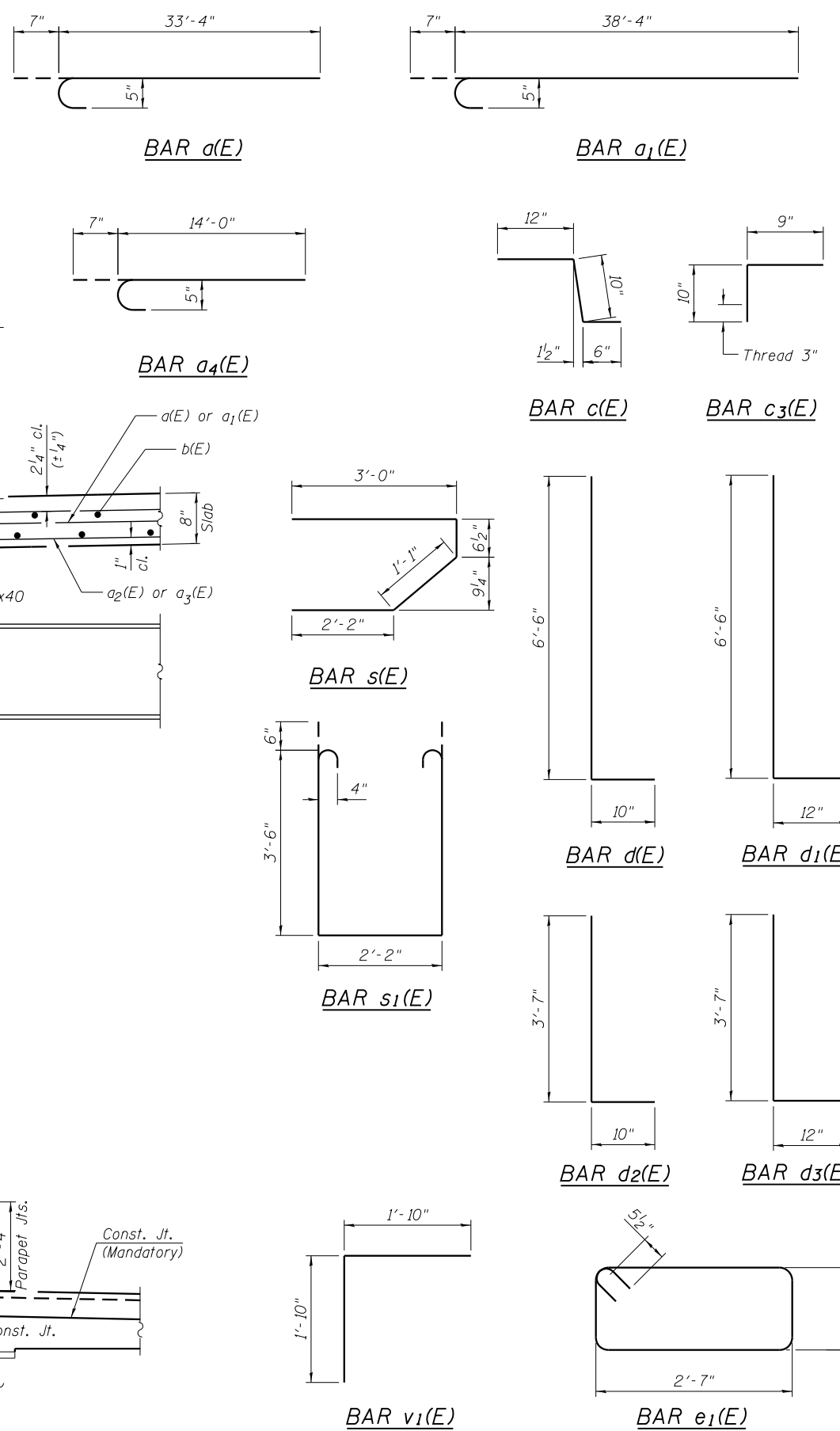


SECTION THRU SIDEWALK

12/5/2012 5:46a2 PM - G:\CHIN\058\Bridges\CADD\Sheets\0162844-D160135-11-SUPDET1.dgn



PARAPET JOINT DETAILS



USER NAME = jrmickow	DESIGNED - JRM	REVISED -
	CHECKED - MDS	REVISED -
PLOT SCALE = 2/8" 1' = 1/8"	DRAWN - DMG	REVISED -
PLOT DATE = 12/5/2012	CHECKED - MDS	REVISED -

**STATE OF ILLINOIS
DEPARTMENT OF TRANSPORTATION**

**SUPERSTRUCTURE DETAILS
STRUCTURE NO. 016-2844**

SHEET NO. 11 OF 30 SHEETS

F.A.P. RT.:	SECTION	COUNTY	TOTAL SHEETS	SHEET NO.
0305	(1920.01,1518,2022&1922,4BIR	COOK	919	461
CONTRACT NO. 60T35			ILLINOIS FED. AID PROJECT	