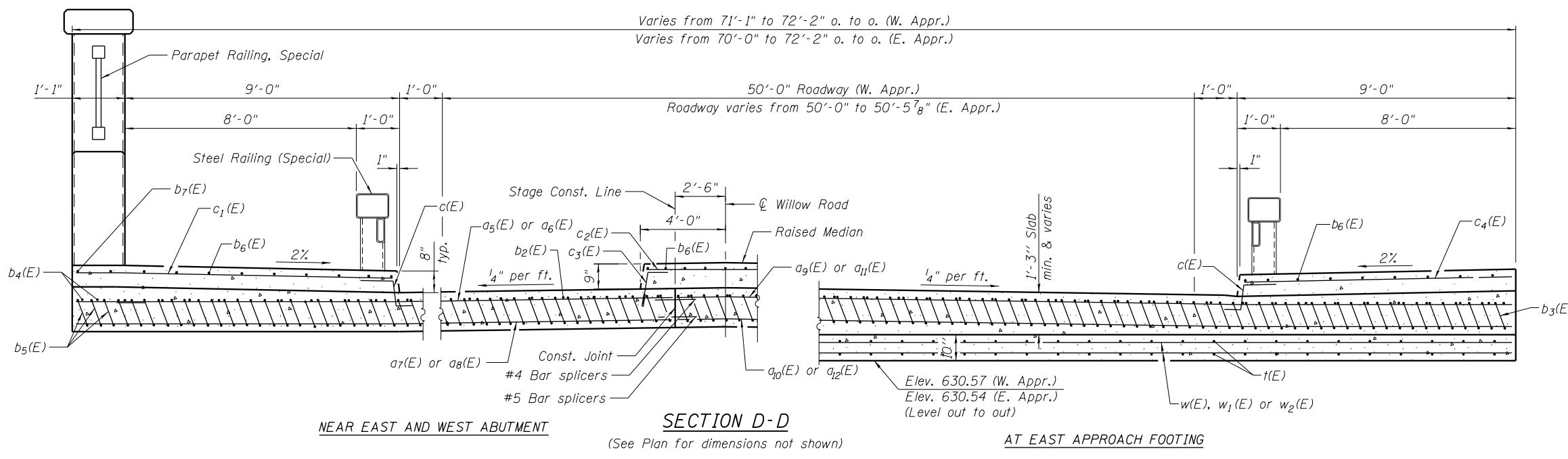


Notes:
 Approach slab and sidewalk concrete shall be paid for as Concrete Superstructure.
 Approach footing concrete shall be paid for as Concrete Structures.
 Reinforcement shall be paid for as Reinforcement Bars, Epoxy Coated.
 For $v_1(E)$ bar details, see sheet 11 of 30.
 The approach footing maximum applied service bearing pressure (Q_{max}) = 2.0 ksf.
 For bar splicer details, see sheet 25 of 30.
 Cost of excavation for approach footing included with Concrete Structures.
 For Porous Granular Backfill and drainage treatment details, see sheet 2 of 30.
 For Parapet Railing, Special, see sheet 16 of 30.
 For approach slab details at the Southwest corner see sheet 15 of 30.

* Tilt #9 $b_3(E)$ bars as required to maintain clearance.
 *** Cost included with Concrete Superstructure.

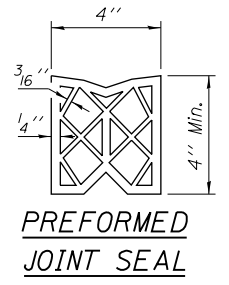
SECTION C-C



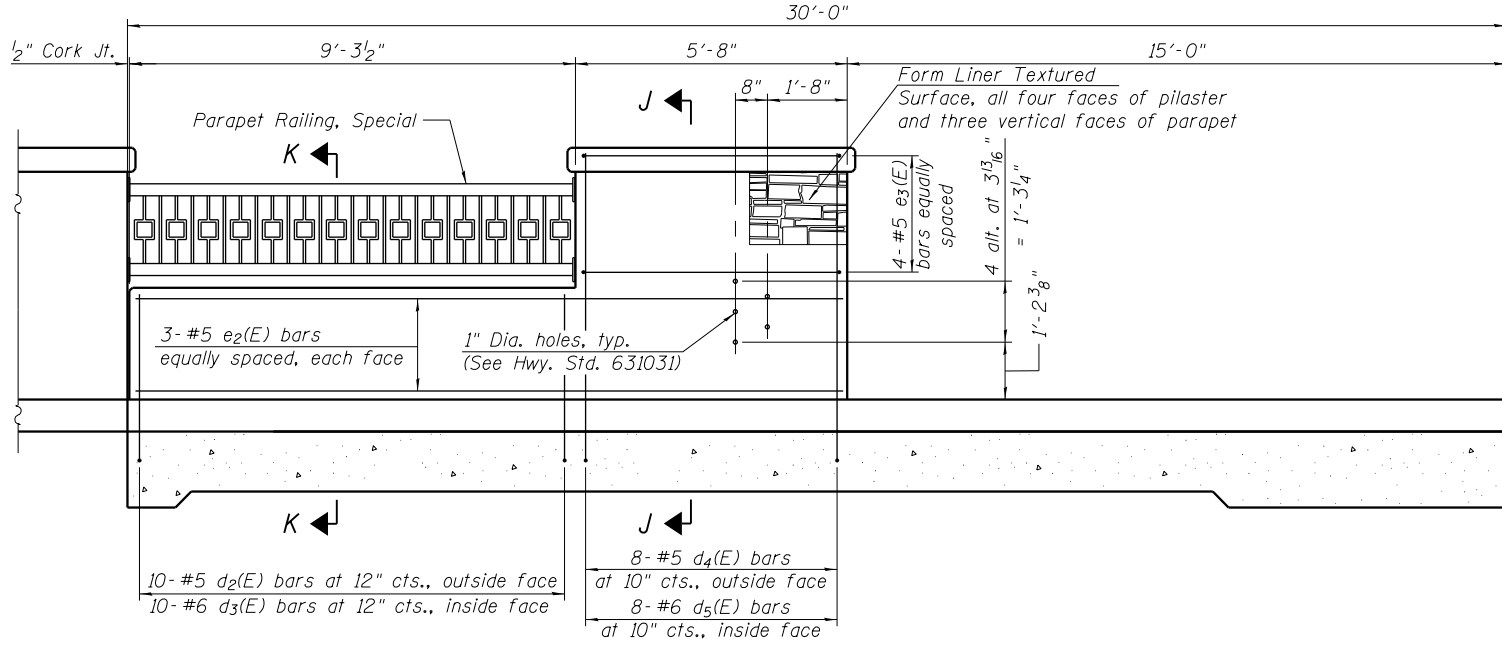
SECTION D-D

(See Plan for dimensions not shown)

AT EAST APPROACH FOOTING

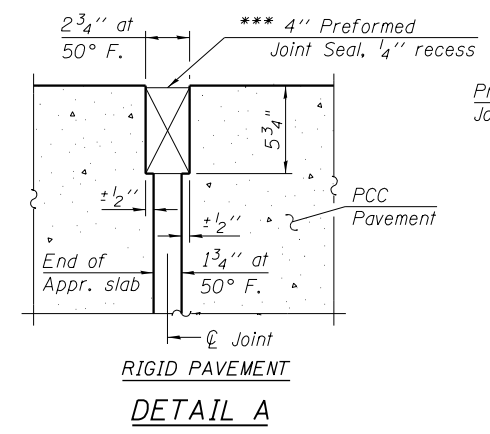


PREFORMED JOINT SEAL



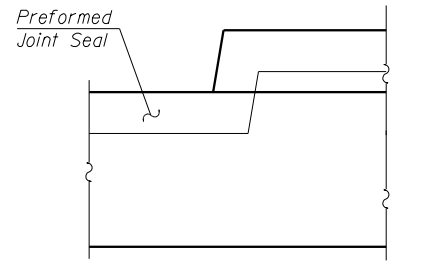
VIEW E-E

(Northeast approach slab parapet shown,
 Northwest and Southeast approach slab parapet opposite hand)
 (Type 6 guardrail connection at Northeast parapet only)



RIGID PAVEMENT DETAIL A

*** Cost included with Concrete Superstructure.



VIEW F-F

Angle Preformed Joint Seal at 45° at curbs when req'd for drainage.

Notes:
 See sheet 15 of 30 for Sections J-J & K-K.

12/5/2012 5:46:14 PM - G:\CHIN\058\Bridges\CADD\Sheets\0162844-D160135-14-APDET2.dgn



USER NAME = jrmickow	DESIGNED - JRM	REVISED -
PLOT SCALE = 8/10 1/4" = 1"	CHECKED - MDS	REVISED -
PLOT DATE = 12/5/2012	DRAWN - DMG	REVISED -
	CHECKED - MDS	REVISED -

STATE OF ILLINOIS DEPARTMENT OF TRANSPORTATION

BRIDGE APPROACH SLAB DETAILS STRUCTURE NO. 016-2844

SHEET NO. 14 OF 30 SHEETS

F.A.P. RTE.	SECTION	COUNTY	TOTAL SHEETS	SHEET NO.
0305	(1920.01,1518,2022&1922.4BIR	COOK	919	464
ILLINOIS FED. AID PROJECT			CONTRACT NO. 60T35	