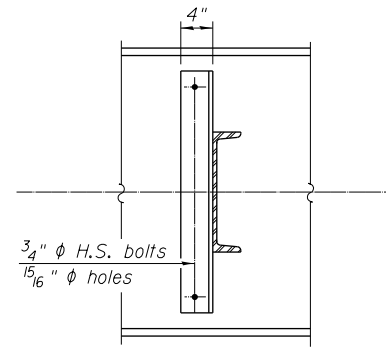
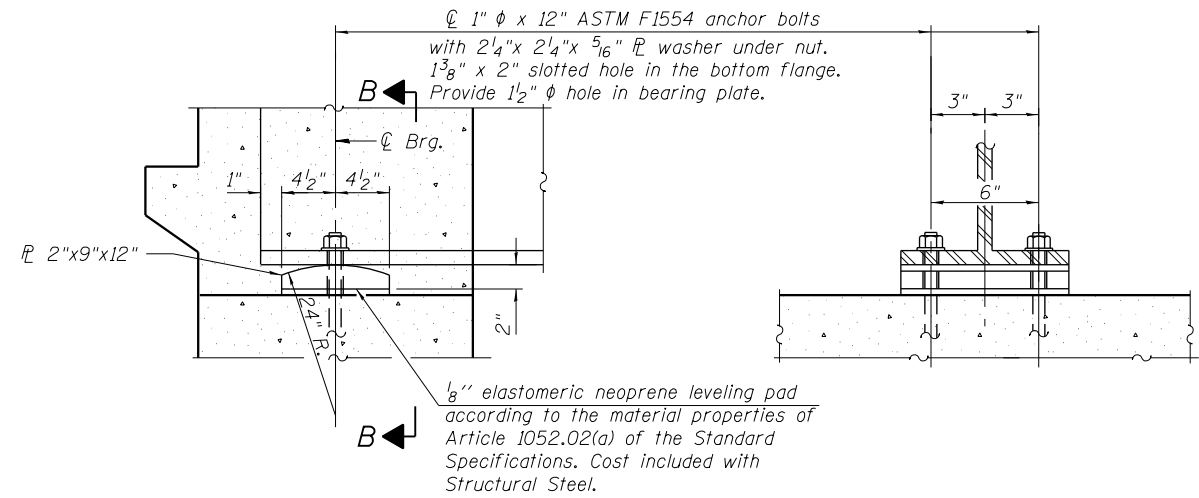


**INTERIOR DIAPHRAGM**

Two hardened washers required for each set of oversized holes.

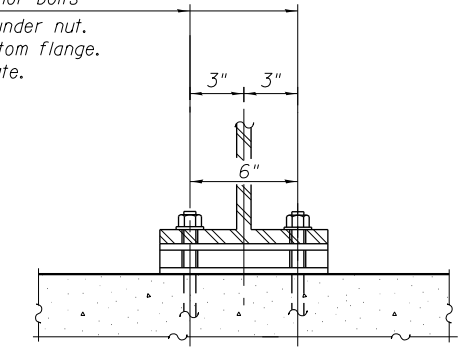


**SECTION C-C**

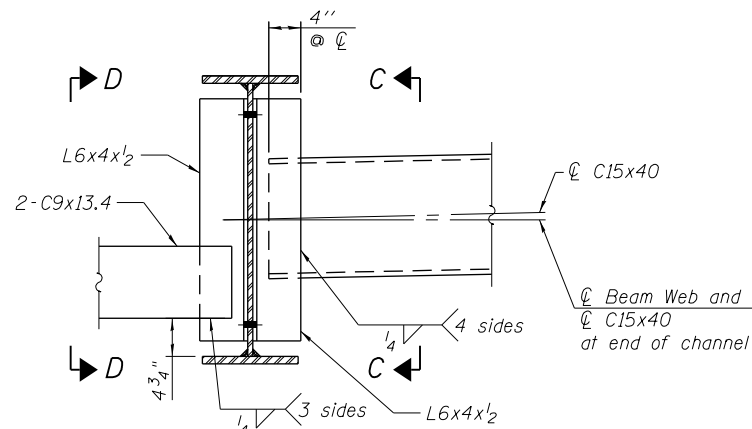


**ELEVATION AT ABUTMENT**

**FIXED BEARING**

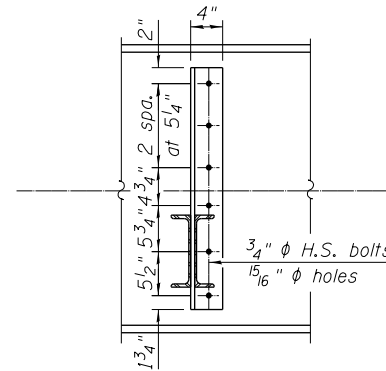


**SECTION B-B**



**EXTERIOR DIAPHRAGM**

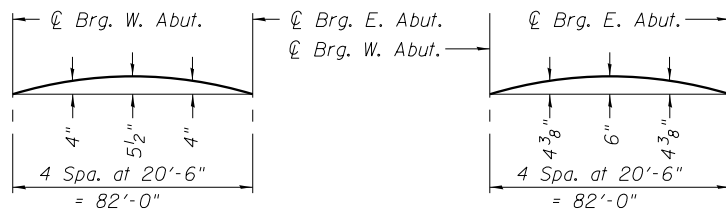
Two hardened washers required for each set of oversized holes.



**SECTION D-D**

**BILL OF MATERIAL**

Item	Unit	Total
Anchor Bolts, 1"	Each	44



**INTERIOR BEAM**

**EXTERIOR BEAM**

**CAMBER DIAGRAM**

(Includes all non-composite dead load, superimposed dead load and vertical profile adjustment.)

**TOP OF WEB ELEVATIONS**

Beam	W. Abut.	E. Abut.
1	632.26	632.24
2	632.08	632.06
3	632.22	632.20
4	632.36	632.34
5	632.50	632.48
6	632.64	632.62
7	632.50	632.48
8	632.36	632.34
9	632.22	632.20
10	632.08	632.06
11	632.26	632.24

"For fabrication only"

**Notes:**

Anchor bolts shall be ASTM F1554 all-thread (or an Engineer-approved alternate material) of the grade(s) and diameter(s) specified. The corresponding specified grade of AASHTO M314 anchor bolts may be used in lieu of ASTM F1554.

Anchor bolts at fixed bearings may be either cast in place or installed in holes drilled after the supported member is in place.

Drilled and set anchor bolts shall be installed according to Article 521.06 of the Standard Specifications.

All diaphragms shall be installed as steel is erected and secured with erection pins and bolts except as otherwise noted. Individual diaphragms at supports may be temporarily disconnected to install bearing anchor rods.

12/5/2012 5:46:18 PM - G:\CHIN\058\Bridges\CADD\Sheets\0162844-D160135-20-BRG.dgn



USER NAME = jrmickow	DESIGNED - JRM	REVISED -
PLOT SCALE = 2:0.0000 1' = 1/4"	CHECKED - MDS	REVISED -
PLOT DATE = 12/5/2012	DRAWN - DMG	REVISED -
	CHECKED - MDS	REVISED -

**STATE OF ILLINOIS  
DEPARTMENT OF TRANSPORTATION**

**STRUCTURAL STEEL DETAILS  
STRUCTURE NO. 016-2844**

SHEET NO. 20 OF 30 SHEETS

F.A.P. RT.E.	SECTION	COUNTY	TOTAL SHEETS	SHEET NO.
0305	(1920.01,1518,2022&1922,4BIR	COOK	919	470
ILLINOIS FED. AID PROJECT			CONTRACT NO. 60T35	