

GENERAL NOTES

1. Reinforcement bars designated (E) shall be epoxy coated.
2. Plan dimensions and details relative to existing plans are subject to nominal construction variations. The Contractor shall field verify existing dimensions and details affecting new construction and make necessary approved adjustments prior to construction or ordering of materials. Such variations shall not be cause for additional compensation for a change in scope of work, however, the Contractor will be paid for the quantity actually furnished at the unit price bid for the work.
3. All construction joints shall be bonded.
4. Minimum bar laps shall be:

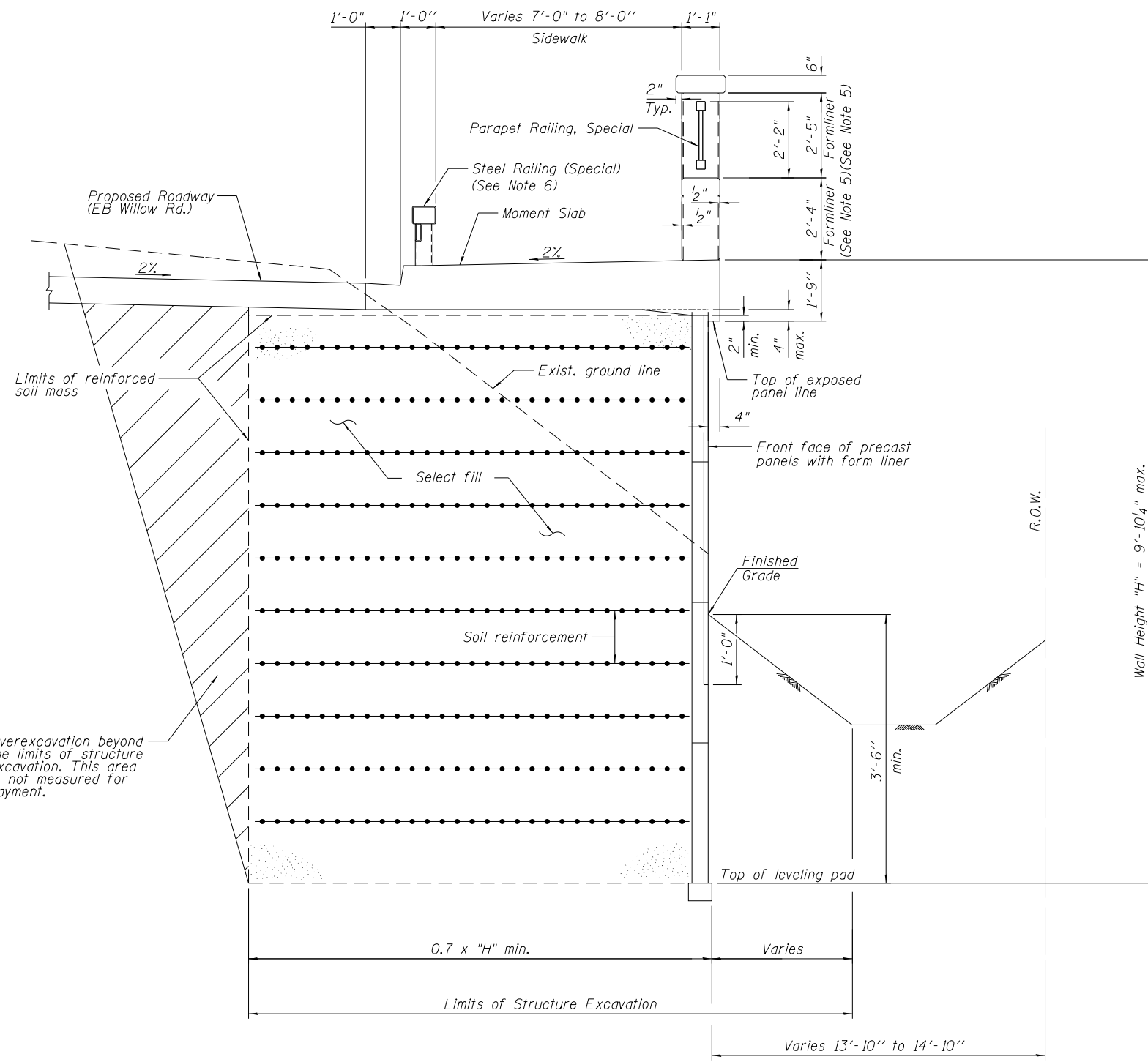
Bar	Min. Lap
#5	3'-3"
#6	3'-10"
5. Formliner textures or patterns of any shape and length shall be inset into the face of the barrier up to 1/2" deep and 1" wide.
6. Steel Railing (Special) shall meet the FHWA requirements for the Washington, DC Historic Bridge Rail Retrofit (Curb Mount) barrier.

TOTAL BILL OF MATERIAL

Item	Unit	Total
Structure Excavation	Cu. Yd.	459
Concrete Superstructure	Cu. Yd.	190.6
Form Liner Textured Surface	Sq. Ft.	3,028
Protective Coat	Sq. Yd.	430
Reinforcement Bars, Epoxy Coated	Pound	23,990
Parapet Railing, Special	Foot	180
Staining Concrete Structures	Sq. Yd.	153
Steel Railing, (Special)	Foot	265
Mechanically Stabilized Earth Retaining Wall	Sq. Ft.	2,036
Temporary Soil Retention System	Sq. Ft.	146

INDEX OF SHEETS

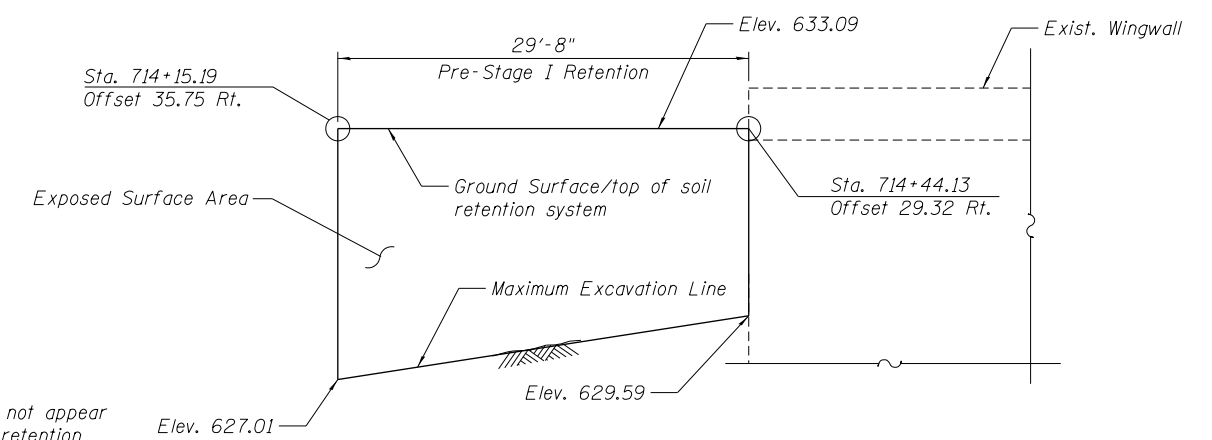
- 1 General Plan and Elevation
- 2 General Data
- 3-5 Moment Slab Plan and Elevation
- 6-8 Details
- 9-10 Soil Boring Logs



TYPICAL SECTION THROUGH MSE WALL

**Backfill overexcavation with same material as used for select fill.

Note:
A cantilevered sheet piling design does not appear feasible and additional members or other retention systems may be necessary. The Contractor shall submit a temporary soil retention system design including plan details and calculations for review and acceptance by the Engineer.



TEMPORARY SOIL RETENTION SYSTEM

(Looking North)

12/5/2012 5:46:36 PM - G:\CHIN\058\Bridges\CADD\Sheets\WALL-A-DIB0135-02-WGD.dgn



USER NAME = jrmickow	DESIGNED - WJC	REVISED -
PLOT SCALE = 4:0 1/2" = 1'	CHECKED - MDS	REVISED -
PLOT DATE = 12/5/2012	DRAWN - WJC	REVISED -
	CHECKED - MDS	REVISED -

**STATE OF ILLINOIS
DEPARTMENT OF TRANSPORTATION**

**GENERAL DATA
RETAINING WALL A**

SHEET NO. 2 OF 10 SHEETS

F.A.P. RTE.	SECTION	COUNTY	TOTAL SHEETS	SHEET NO.
0305	(1920.01,1518,2022&1922.4BIR	COOK	919	482
ILLINOIS FED. AID PROJECT			CONTRACT NO. 60T35	