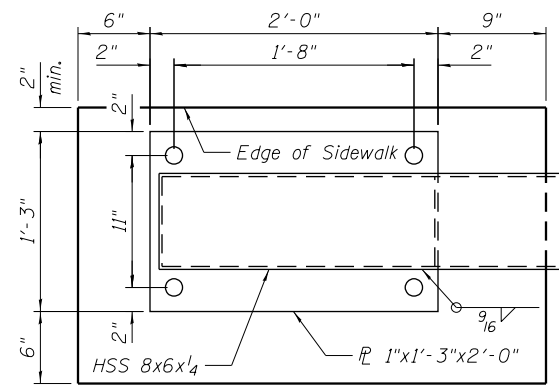
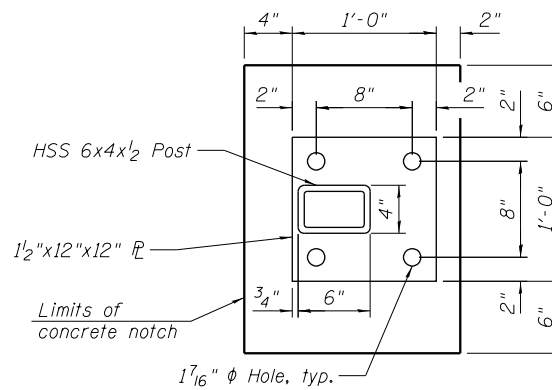


**SLAB CUTOUT DETAIL**

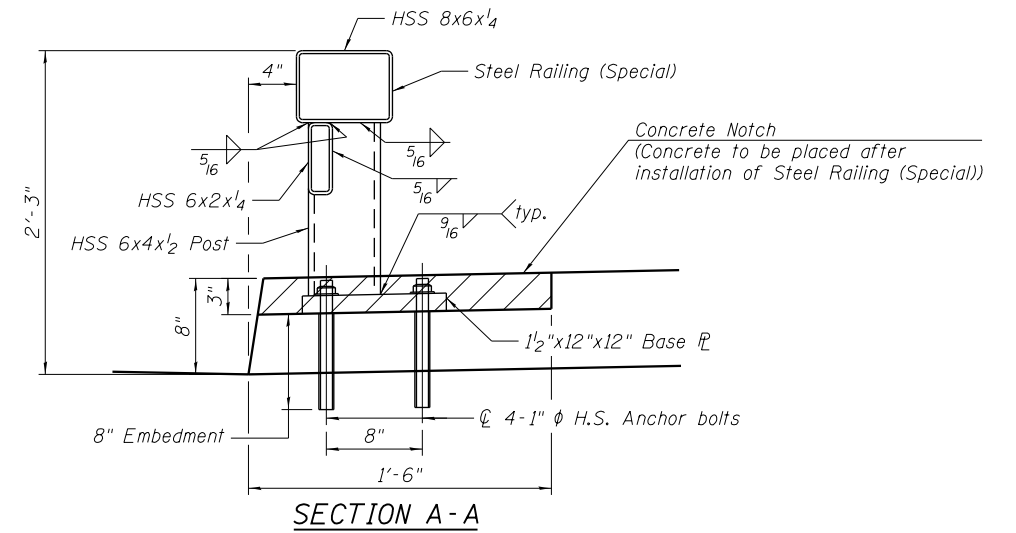
\* Note:  
Concrete around frame and grate, frame and grate, and a7(E) bars shall be constructed in Stage II Construction.



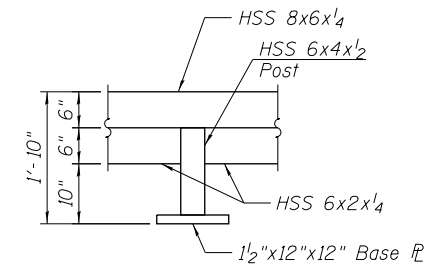
**END SECTION PLATE DETAIL**  
(1 Required)



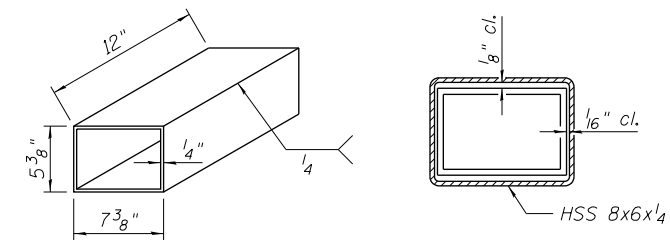
**BASE PLATE DETAIL**



**SECTION A-A**



**RAIL POST DETAIL**



**JOINT SLEEVE DETAIL**

**BILL OF MATERIAL**

Item	Unit	Total
Steel Railing (Special)	Foot	265

Notes:  
All steel railing elements shall be galvanized according to the special provision Steel Railing (Special) and Article 1006.34 of the Standard Specifications.  
The color of the final finish for the steel railing shall be verde green.  
Drill and set anchor bolts according to Article 509.06 of the Standard Specifications.

12/5/2012 5:46:41 PM - G:\CHIN\058\Bridges\CADD\Sheets\WALL-A-DIG0135-01-WDET2.dgn



USER NAME = jrmickow	DESIGNED - JRM	REVISED -
PLOT SCALE = 8:0 1" = 10'	CHECKED - MDS	REVISED -
PLOT DATE = 12/5/2012	DRAWN - MEP	REVISED -
	CHECKED - MDS	REVISED -

**STATE OF ILLINOIS  
DEPARTMENT OF TRANSPORTATION**

**DETAILS  
RETAINING WALL A**

SHEET NO. 7 OF 10 SHEETS

F.A.P. RTE.	SECTION	COUNTY	TOTAL SHEETS	SHEET NO.
0305	(1920.01,1518,2022&1922.4B)R	COOK	919	487
ILLINOIS FED. AID PROJECT			CONTRACT NO. 60T35	