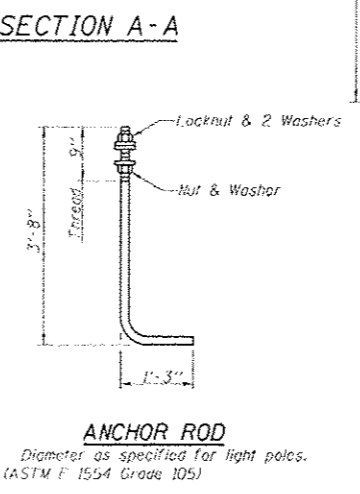
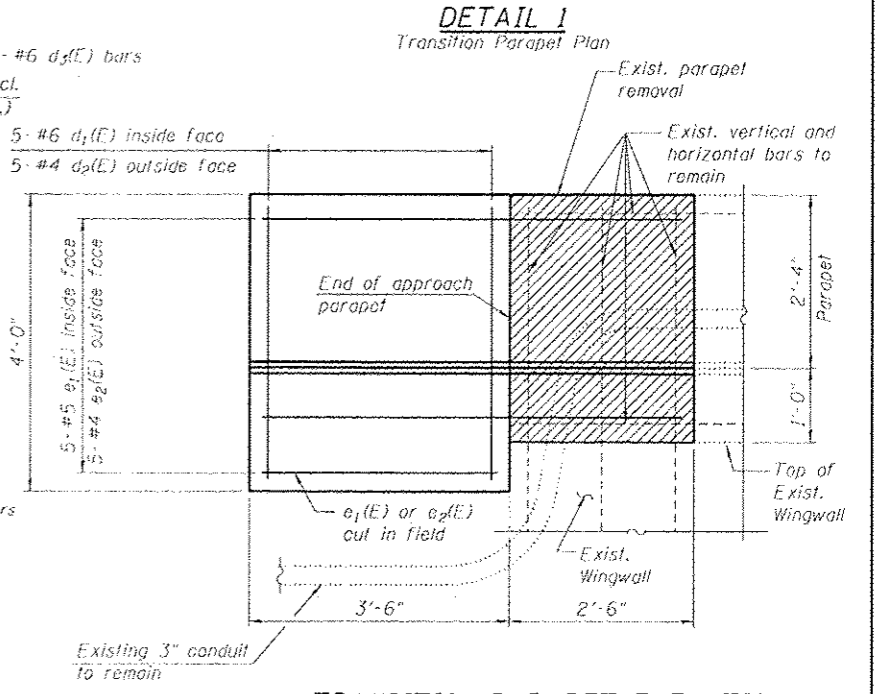
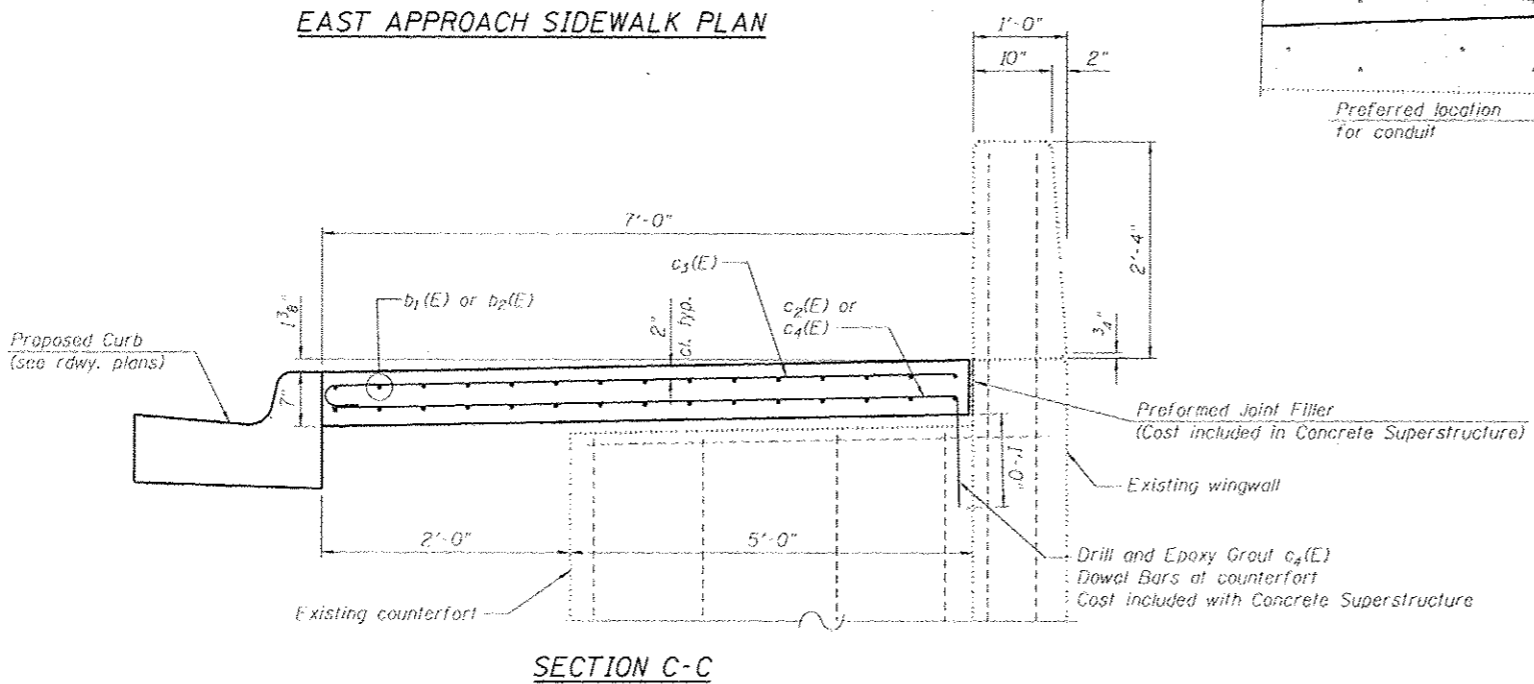
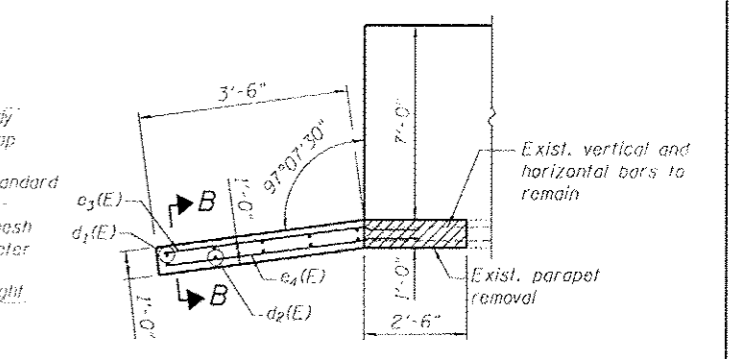
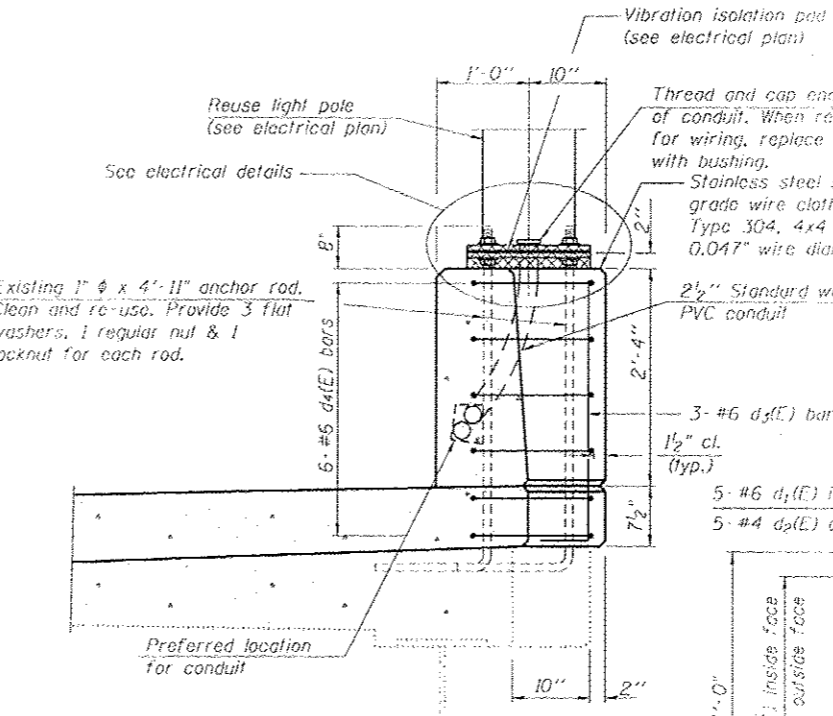
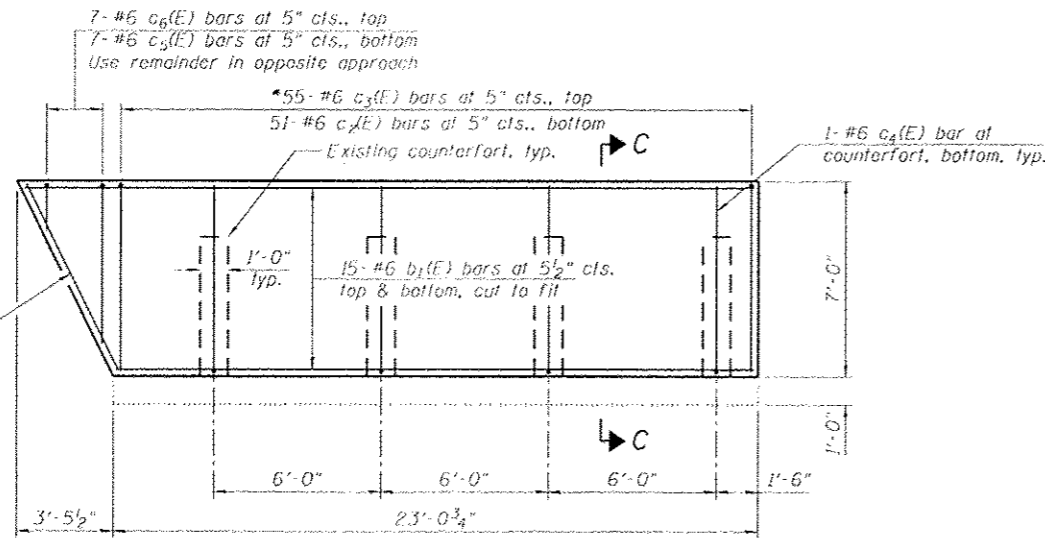


*T11 #6 c (E) bars as required to maintain clearance.



Notes:
Existing reinforcement shall be cleaned and incorporated into the new construction. Cost included with Concrete Removal.

2/2/2012 9:47:04 AM C:\CHANGING\31-1598\CA20\Sheet1\060315-05-CROSS.dwg

	USER NAME: kshastings	DESIGNED: JST	REVISED:	STATE OF ILLINOIS DEPARTMENT OF TRANSPORTATION	REINFORCEMENT DETAILS I STRUCTURE NO. 016-0536	F.A.P. RTE. 0305	SECTION 11920.01, 1518, 2022&1922, 4BR	COUNTY COOK	TOTAL SHEETS 919	SHEET NO. 495
	PLOT SCALE: 200 1/2" = 1'	CHECKED: JRM	REVISED:			CONTRACT NO. 60T35				
	PLOT DATE: 12/5/2012	DRAWN: DMG	REVISED:			ILLINOIS FED. AID PROJECT				
	CHECKED: MSL/DL/KAH	REVISED:		SHEET NO. 5 OF 11 SHEETS						