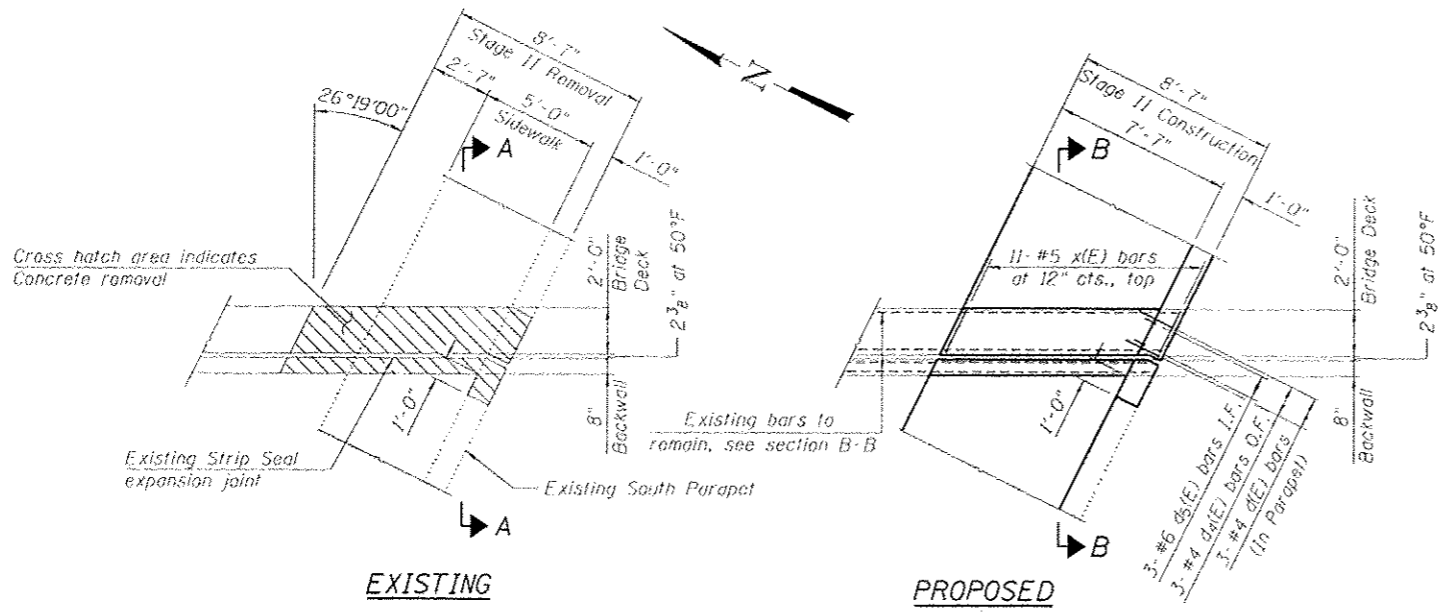
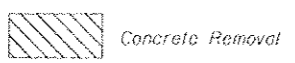


**PARTIAL PLAN AT EAST ABUTMENT**

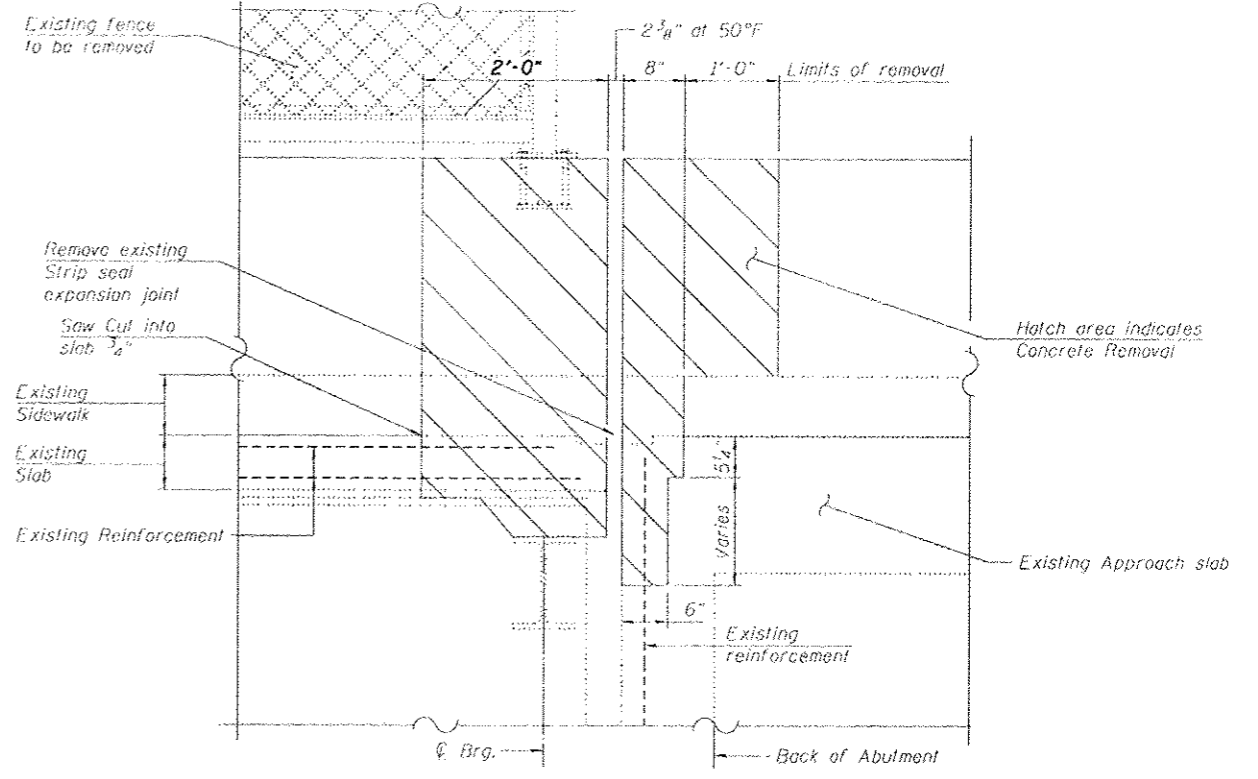


**PARTIAL PLAN AT WEST ABUTMENT**

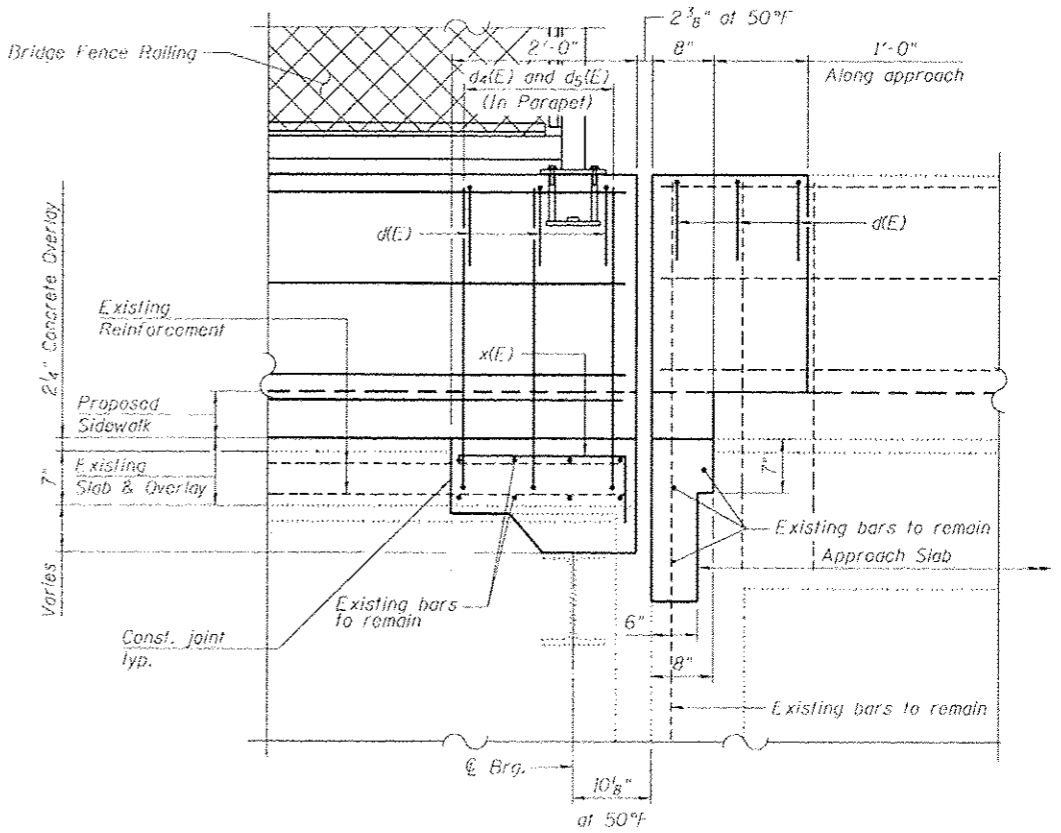
**LEGEND**



**Notes:**  
 Existing reinforcement bars extending into the concrete removal area shall be cleaned, straightened and incorporated into the new construction. Any reinforcement bars that are damaged during concrete removal shall be replaced with an approved bar splicer or anchorage system. Cost included with Concrete Removal.  
 Existing reinforcement bars in the concrete removal area parallel to the expansion joints shall remain.  
 Removal and disposal of the existing expansion joints will not be paid for separately, but shall be included with the cost of Concrete Removal.  
 Contractor may remove and reinstall the existing diaphragm members as necessary to complete the required concrete removal and reconstruction. Cost included with Concrete Removal.  
 I.F. denotes inside face. O.F. denotes outside face.  
 Work this sheet with sheet B of 11.



**SECTION A-A**  
(South Parapet Shown)



**SECTION B-B**  
(South Parapet Shown)

12/27/2012 5:46:58 pm - G:\CH\056\bridge\CD\Sheet\0160316-0160315-07-EXP-IT.dgn

	USER NAME - j.mickow	DESIGNED - JRM	REVISED -	<b>STATE OF ILLINOIS</b> <b>DEPARTMENT OF TRANSPORTATION</b>	<b>EXPANSION JOINT DETAILS</b> <b>STRUCTURE NO. 016-0536</b>	F.A.P. R.T.E. 0305 SECTION (1920.01,1518,2022&1922.4B)R COUNTY COOK TOTAL SHEETS 919 SHEET NO. 497
	PLOT SCALE - 8.00' / 1"	DRAWN - DMG	REVISED -			
	PLOT DATE - 12/9/2012	CHECKED - DL/KAH	REVISED -		SHEET NO. 7 OF 11 SHEETS	ILLINOIS FED. AID PROJECT