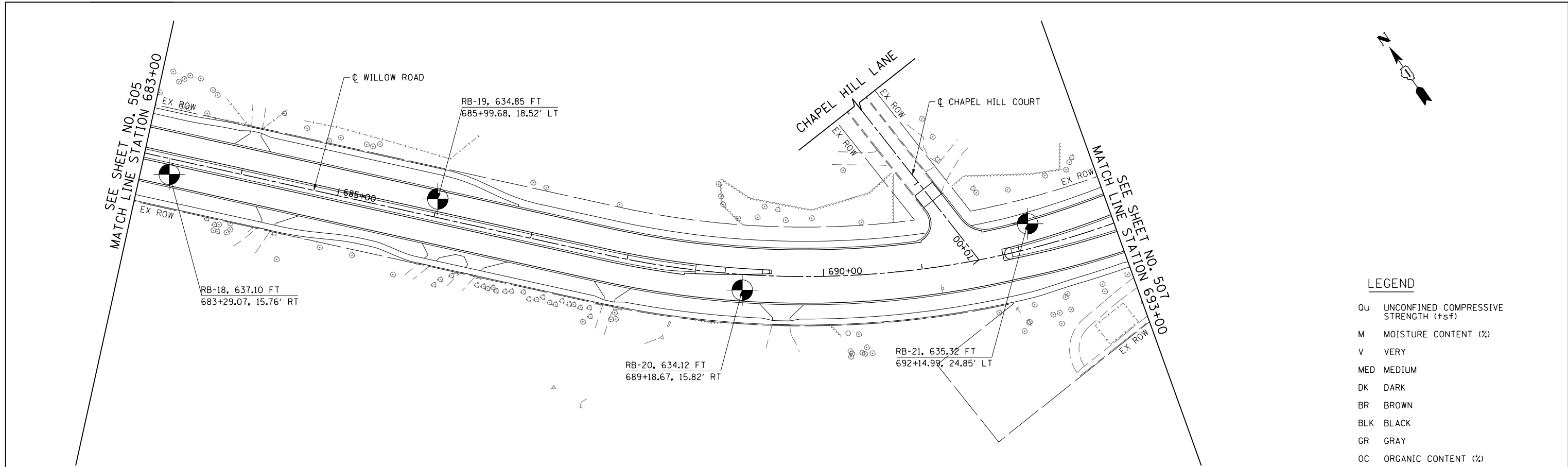


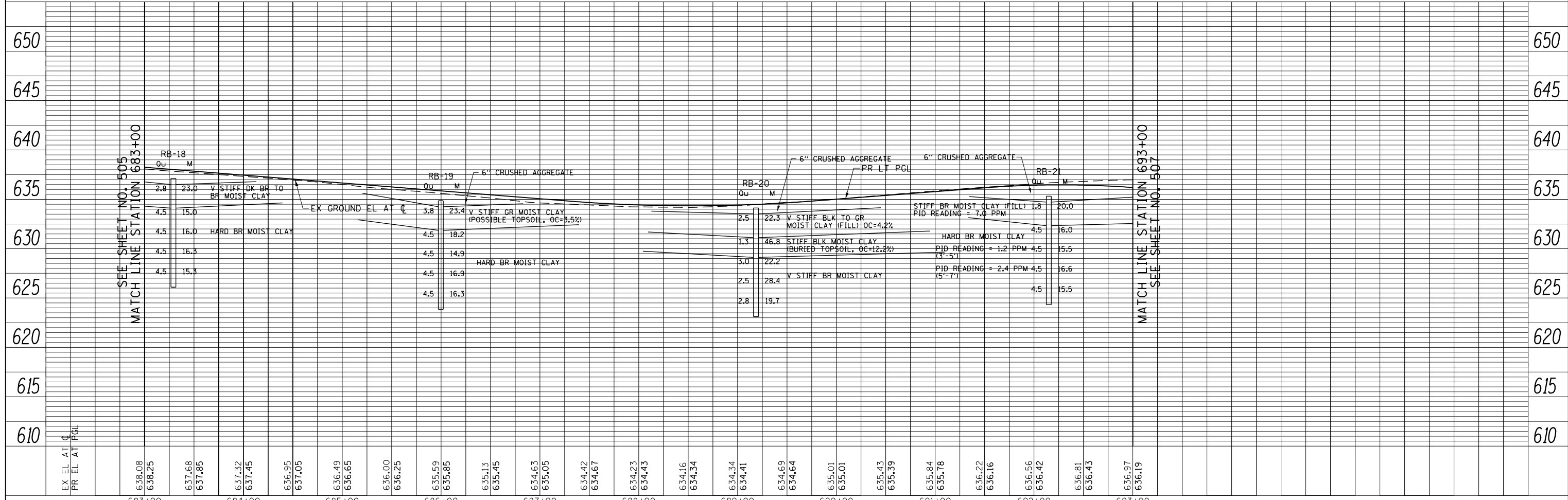
PLAN	SURVEYED	DATE
	PLOTTED	BY
	CHECKED	
	ALIGNED	
	FILED	
	NO.	
	NO.	
	NO.	

PROFILE	SURVEYED	DATE
	PLOTTED	BY
	CHECKED	
	GRADES	
	STRUCTURE	
	NOTATIONS	
	NO.	
	NO.	
	NO.	



LEGEND

- Qu UNCONFINED COMPRESSIVE STRENGTH (tsf)
- M MOISTURE CONTENT (%)
- V VERY
- MED MEDIUM
- DK DARK
- BR BROWN
- BLK BLACK
- GR GRAY
- OC ORGANIC CONTENT (%)



FILE NAME = G:\CH11\158\Road\Sheets\DI60135-SHT-SOIL.dgn	USER NAME = BAW:ort	DESIGNED -	REVISED -	STATE OF ILLINOIS DEPARTMENT OF TRANSPORTATION	WILLOW ROAD SOIL BORING PLAN AND PROFILE	F.A.P. RTE. 305	SECTION (1920.01,1518,2022&1922.4)BR	COUNTY COOK	TOTAL SHEETS 919	SHEET NO. 506		
PLOT SCALE = 100.000' / in.	CHECKED -	REVISED -	SCALE: HORIZ: 1"=50'			SHEET NO. 506 OF 919 SHEETS	STA. 683+00 TO STA. 693+00	CONTRACT NO. 60T35				
PLOT DATE = 11/1/2012	DATE = 10/31/2012	REVISED -	VER: 1"=5'			FED. ROAD DIST. NO. 1 ILLINOIS FED. AID PROJECT						