

ROUTE MARKERS

FOR U.S. ROUTES
M1-40-2424

FOR ILLINOIS ROUTES
M1-50-2424

R.R. UNMARKED ROUTES
SPECIAL 24" x 18" VARIABLE
4" BLACK LETTERS ON WHITE
REFLECTIVE BACKGROUND

ARROWS SIGNS

M5-1L-2115

M5-1R-2115

M6-1-2115

M6-1-2115

M6-3-2115

CARDINAL DIRECTION & DETOUR SIGNS

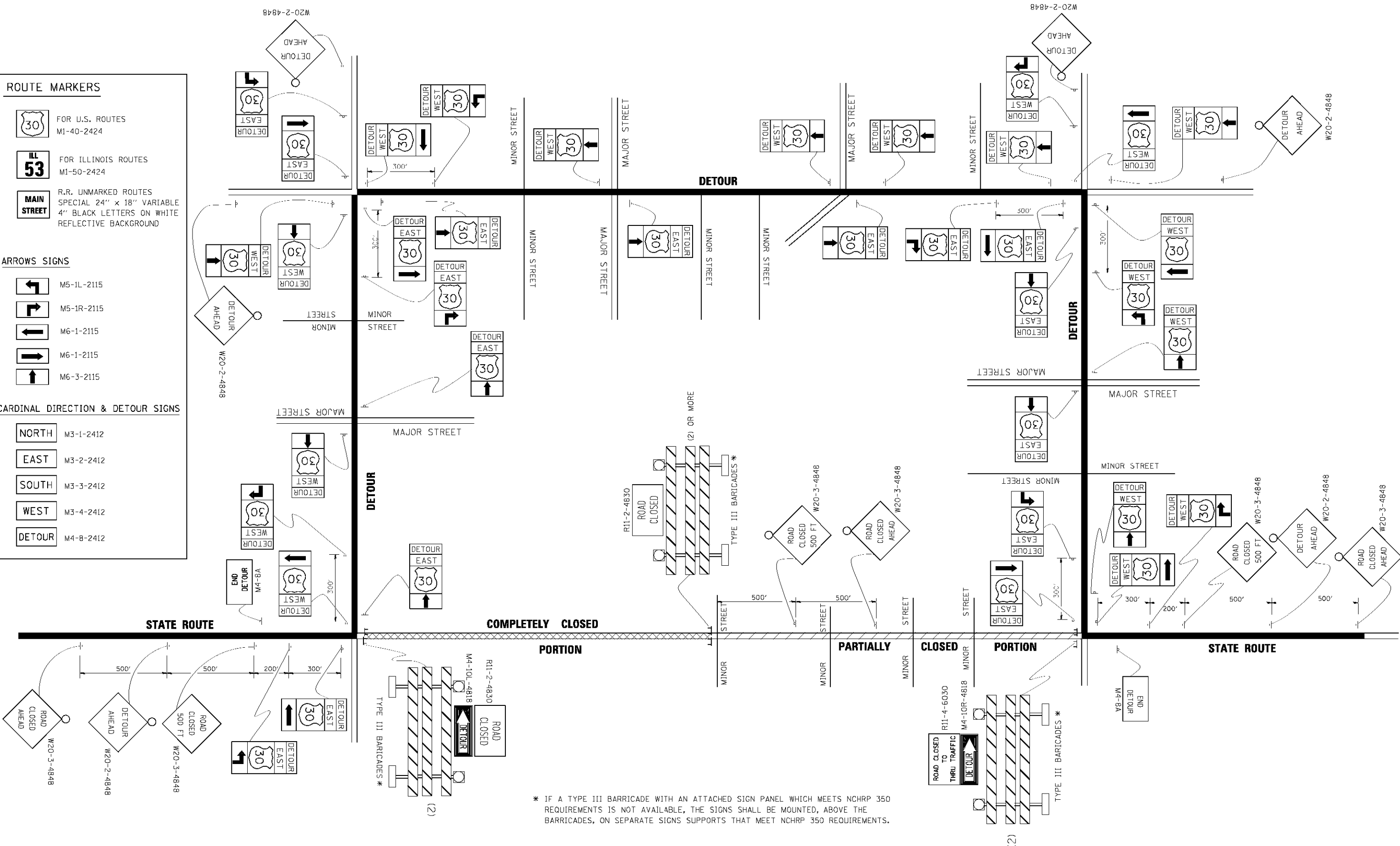
NORTH M3-1-2412

EAST M3-2-2412

SOUTH M3-3-2412

WEST M3-4-2412

DETOUR M4-8-2412



* IF A TYPE III BARRICADE WITH AN ATTACHED SIGN PANEL WHICH MEETS NCHRP 350 REQUIREMENTS IS NOT AVAILABLE, THE SIGNS SHALL BE MOUNTED, ABOVE THE BARRICADES, ON SEPARATE SIGNS SUPPORTS THAT MEET NCHRP 350 REQUIREMENTS.

FILE NAME L:\nonwork\p\WID07\DRG\WKS\GHW\0100315\21.dwg	USER NAME drazakougi	DESIGNED - DRAWN -	REVISED - 10-18-02 REVISED - R. BORO 09-14-09
PLOT SCALE 42.77777777 / IN.	CHECKED -	REVISOR -	REVISOR -
PLOT DATE 2/14/2009	DATE -	REVISOR -	REVISOR -

**STATE OF ILLINOIS
DEPARTMENT OF TRANSPORTATION**

DETOUR SIGNING FOR CLOSING STATE HIGHWAYS	
SCALE: NONE	SHEET NO. 1 OF 1 SHEETS
STA.	TO STA.

F.A.P. RTE. 305	SECTION 1920.01,1518,2022&1922.4BIF	COUNTY COOK	TOTAL SHEETS 919	SHEET NO. 551
TC-21		CONTRACT NO. 60T35		
FED. ROAD DIST. NO. 1 ILLINOIS FED. AID PROJECT				