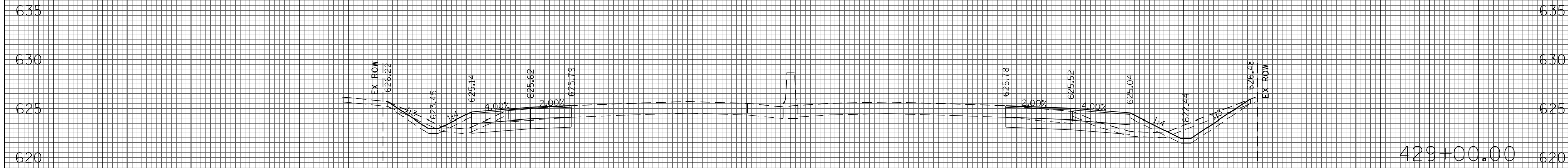
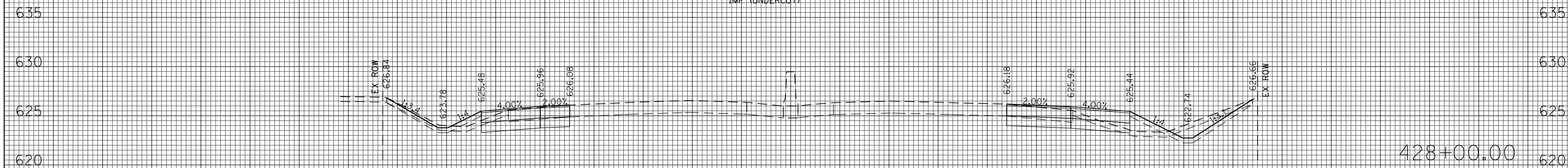


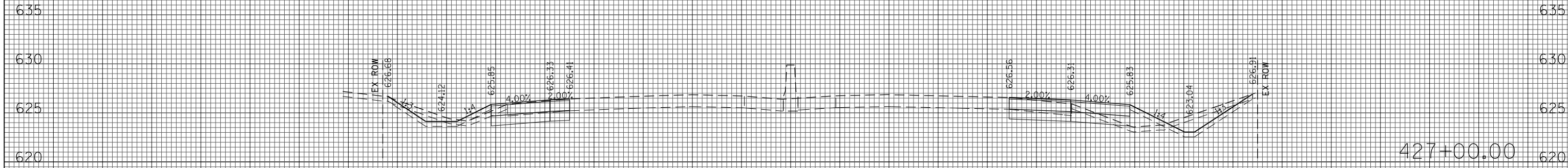
150 140 130 120 110 100 90 80 70 60 50 40 30 20 10 0 10 20 30 40 50 60 70 80 90 100 110 120 130 140 150



(SQ FT) STAGE 2
 EARTH EXC 55
 EMBANKMENT 13
 UNSUITABLE EXC 30
 AGG SUBGRADE 0
 IMP (UNDERCLT)



(SQ FT) STAGE 2
 EARTH EXC 51
 EMBANKMENT 13
 UNSUITABLE EXC 31
 AGG SUBGRADE 0
 IMP (UNDERCLT)



(SQ FT) STAGE 2
 EARTH EXC 56
 EMBANKMENT 13
 UNSUITABLE EXC 31
 AGG SUBGRADE 0
 IMP (UNDERCLT)

150 140 130 120 110 100 90 80 70 60 50 40 30 20 10 0 10 20 30 40 50 60 70 80 90 100 110 120 130 140 150

FILE NAME = G:\CH11\0158\Road\Sheets\160T35-SHT-XSC-6.dgn
 USER NAME = BAW\jort
 PLOT SCALE = 20.000' / in.
 PLOT DATE = 11/1/2012

DESIGNED - JLV
 DRAWN - KAL
 CHECKED - RCB
 DATE - 10/31/2012

REVISED -
 REVISED -
 REVISED -
 REVISED -

STATE OF ILLINOIS
 DEPARTMENT OF TRANSPORTATION

INTERSTATE 94 CROSS SECTIONS

SCALE: 10H : 5V SHEET NO. 909 OF 919 SHEETS STA. 427+00.00 TO STA. 429+00.00

F.A.P. RTE.	SECTION	COUNTY	TOTAL SHEETS	SHEET NO.
305	(1920.01,1518,2022&1922.4)R	COOK	919	909
FED. ROAD DIST. NO. 1 ILLINOIS FED. AID PROJECT			CONTRACT NO. 60T35	