

F.A.P. RTE.	SECTION	COUNTY	TOTAL SHEETS	SHEET NO.
353	13RS-7	WILL	30	1
		ILLINOIS	CONTRACT NO. 60T89	

STATE OF ILLINOIS
DEPARTMENT OF TRANSPORTATION

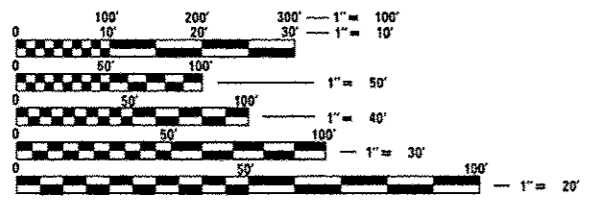
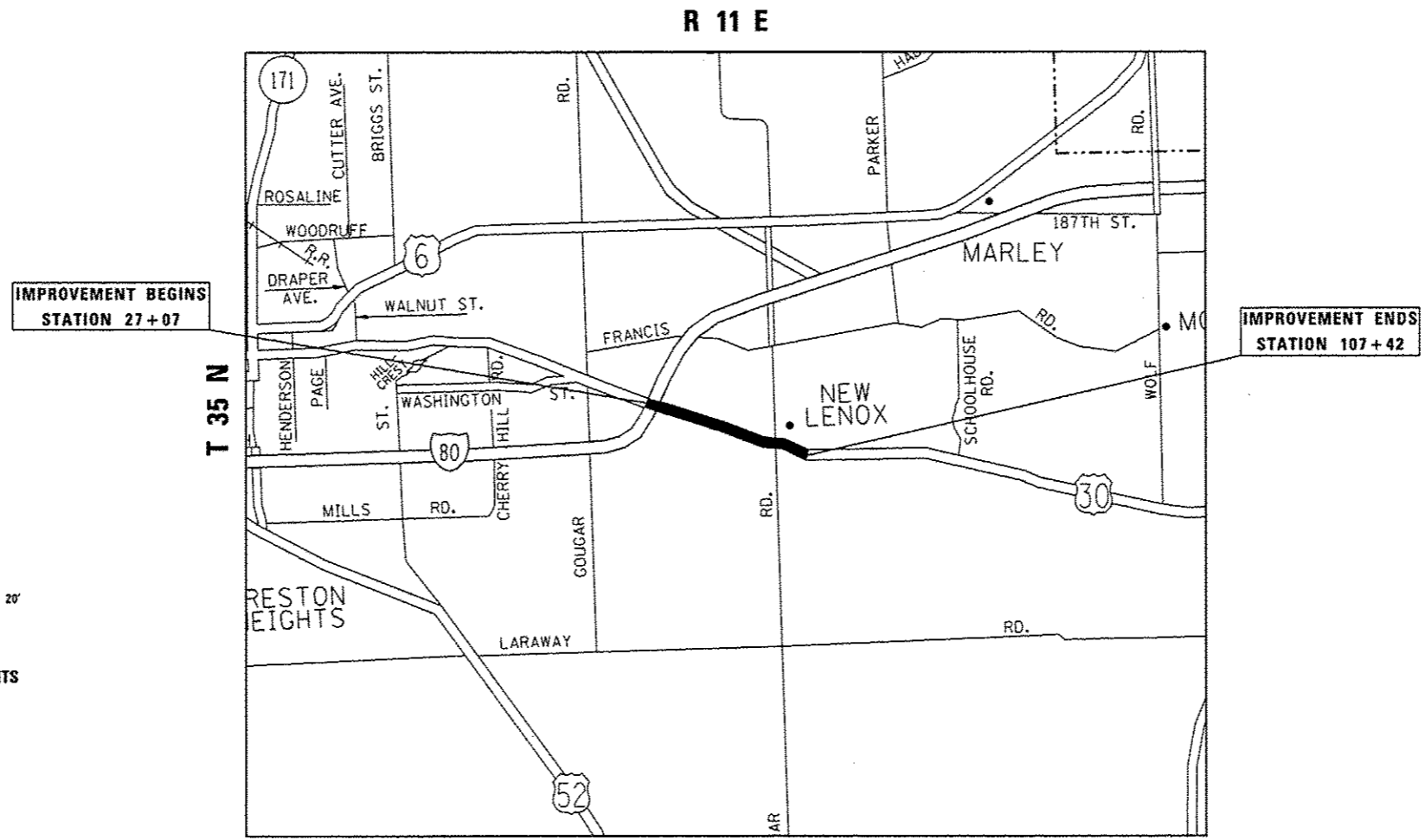
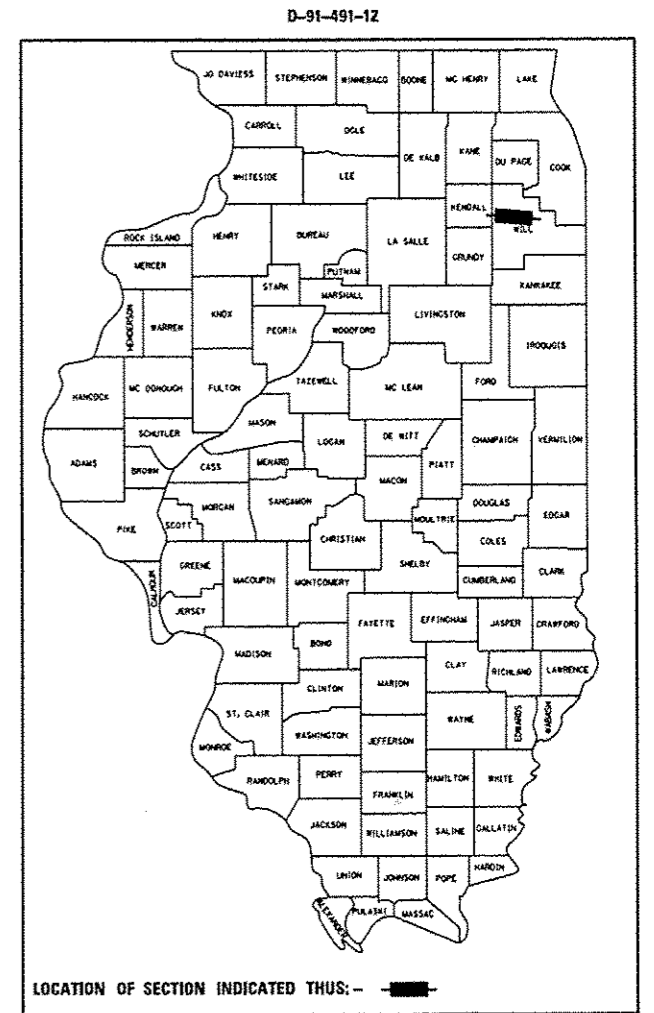
DIVISION OF HIGHWAYS
**PROPOSED
HIGHWAY PLANS**

FAP ROUTE 353 /US 30 (LINCOLN HWY.)
180 TO CHURCH ST.
SECTION 13RS-7
RESURFACING
WILL COUNTY
C-91-491-12

FOR INDEX OF SHEETS, SEE SHEET NO. 2

IMPROVEMENT IS LOCATED IN THE VILLAGE OF NEW LENOX

TRAFFIC DATA:
ADT = 17,400 - 26,500
POSTED SPEED = 35 - 40 MPH



FULL SIZE PLANS HAVE BEEN PREPARED USING STANDARD ENGINEERING SCALES. REDUCED SIZED PLANS WILL NOT CONFORM TO STANDARD SCALES. IN MAKING MEASUREMENTS ON REDUCED PLANS, THE ABOVE SCALES MAY BE USED.

J.U.L.I.E.
JOINT UTILITY LOCATION INFORMATION FOR EXCAVATION
1-800-892-0123
OR 811

PROJECT ENGINEER JENPAI CHANG 847-705-4432
PROJECT MANAGER KENG ENG 847-705-4247

CONTRACT NO. 60T89

NEW LENOX TOWNSHIP
GROSS LENGTH = 8,035 FT. = 1.52 MILE
NET LENGTH = 8,035 FT. = 1.52 MILE

STATE OF ILLINOIS
DEPARTMENT OF TRANSPORTATION
DIVISION OF HIGHWAYS

SUBMITTED October 29, 2012
John Fortmann
DEPUTY DIRECTOR OF HIGHWAYS, REGION ENGINEER

Dec 7 2012
John D. Baranzoli, P.E.
acting ENGINEER OF DESIGN AND ENVIRONMENT

Dec 7 2012
William R. Frey, Jr.
acting DIRECTOR OF HIGHWAYS, CHIEF ENGINEER

PRINTED BY THE AUTHORITY
OF THE STATE OF ILLINOIS