

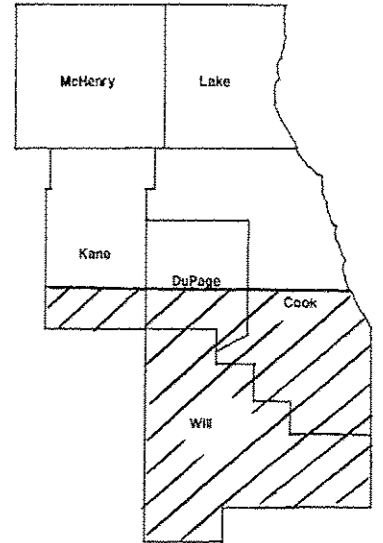
1-18-13 LETTING ITEM 071

ROUTE	SECTION	COUNTY	TOTAL SHEETS	SHEET NUMBER
VARIOUS	2012-062 I	VARIOUS	9	1

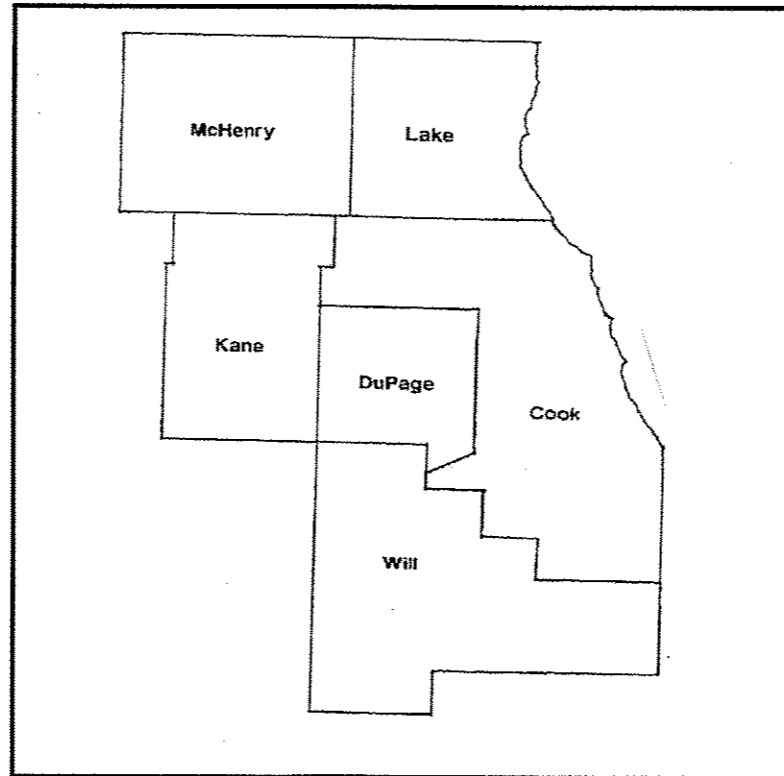
CONTRACT 60V70
D-91-059-13

STATE OF ILLINOIS
DEPARTMENT OF TRANSPORTATION
DIVISION OF HIGHWAYS
DISTRICT ONE
PROPOSED HIGHWAY PLANS

ROUTE: VARIOUS SOUTH
SECTION: 2012-062 I
MOWING
VARIOUS COUNTIES
C-91-059-13



LOCATION OF IMPROVEMENT INDICATED THUS:



IMPROVEMENT IS IN VARIOUS
LOCATIONS WITHIN DISTRICT
ONE

STATE OF ILLINOIS
DEPARTMENT OF TRANSPORTATION
DIVISION OF HIGHWAYS

SUBMITTED: November 2 2012
John Fortman
DEPUTY DIRECTOR OF HIGHWAYS, REGION ENGINEER

Dec 7 2012
John D. Baranzelli, P.E.
acting ENGINEER OF DESIGN AND ENVIRONMENT

Dec 7 2012
William R. Frey
acting DIRECTOR OF HIGHWAYS, CHIEF ENGINEER

**PRINTED BY THE AUTHORITY
OF THE STATE OF ILLINOIS**

J.U.L.I.E.: JOINT UTILITY LOCATION
INFORMATION FOR EXCAVATION
(800) 892-0123 OR 811

DISTRICT ONE BUREAU OF MAINTENANCE: J. STUMPNER
MAINTENANCE LANDSCAPE DESIGNER: R. WANNER / T. JACKSON (847) 705-4171

CONTRACT 60V70

ROUTE	SECTION	COUNTY	TOTAL SHEETS	SHEET NUMBER
VARIOUS	2012-062 I	VARIOUS	9	2

CONTRACT 60V70

INDEX OF SHEETS

- 1) COVER SHEET
- 2) INDEX OF SHEETS, STATE STANDARDS
- 3) SUMMARY OF QUANTITIES
- 4) SAMPLE WORK ORDER
- 5) MOWING MAP TYPICAL
- 6) TRIMMING DETAIL
- 7) MOWING DETAIL #1-3
- 8) MOWING DETAIL #4-5
- 9) TC-17 TRAFFIC CONTROL DETAIL FOR FREEWAY SHOULDER CLOSURES AND PARTIAL RAMP CLOSURES

STATE STANDARDS

701011-03

701101-03

701311-03

701426-05

701901-03

ILLINOIS DEPARTMENT OF TRANSPORTATION
MOWING
INDEX OF SHEETS

ROUTE	SECTION	COUNTY	TOTAL SHEETS	SHEET NUMBER
VARIOUS	2012-062 I	VARIOUS	9	3

CONTRACT 60V70

SUMMARY OF QUANTITIES

PAY ITEM	DESCRIPTION	UNIT	0031	URBAN
			CONTRACT MAINT FUND	100% STATE TOTAL
25000750	MOWING	ACRE	894	894
67100100	MOBILIZATION	L SUM	1	1

ILLINOIS DEPARTMENT OF TRANSPORTATION

MOWING

SUMMARY OF QUANTITIES
STATE STANDARDS

ROUTE	SECTION	COUNTY	TOTAL SHEETS	SHEET NUMBER
VARIOUS	2012-062 I	VARIOUS	9	4



Illinois Department of Transportation

Contract Number: _____
Mowing Work Order Number: _____
Route: _____

CONTRACT 60V70

30-Day Completion Work Order

Cook	DuPage	Kane	Work Order Prepared By	Team Section
Lake	McHenry	Will		

Location:

Refer to attached mow maps, which are hereby made a part of this work order (_____ sheets)

WORK INCLUDED IN THIS WORK ORDER			
Item	Mow Map Qty		
Mowing		acres	

AGREEMENT TO ACCURACY OF WORK ORDER QUANTITIES

The Contractor and Engineer hereby agree that when the work is completed essentially to the lines and dimensions given, no further measurement will be required for any of the above items. Payment will be made for the work order quantities shown.

Engineer Signature and Date

Contractor Signature and Date

AUTHORIZATION OF WORK ORDER

Technician Signature

Start Date

Completion Date

CERTIFICATION OF COMPLETION

Contractor Signature

Date

Number of 33 gallon bags filled with litter and debris

ACCEPTANCE OF COMPLETED WORK

I certify that the work order has been completed in conformance with contract requirements.

Resident Engineer/Technician Signature

Date

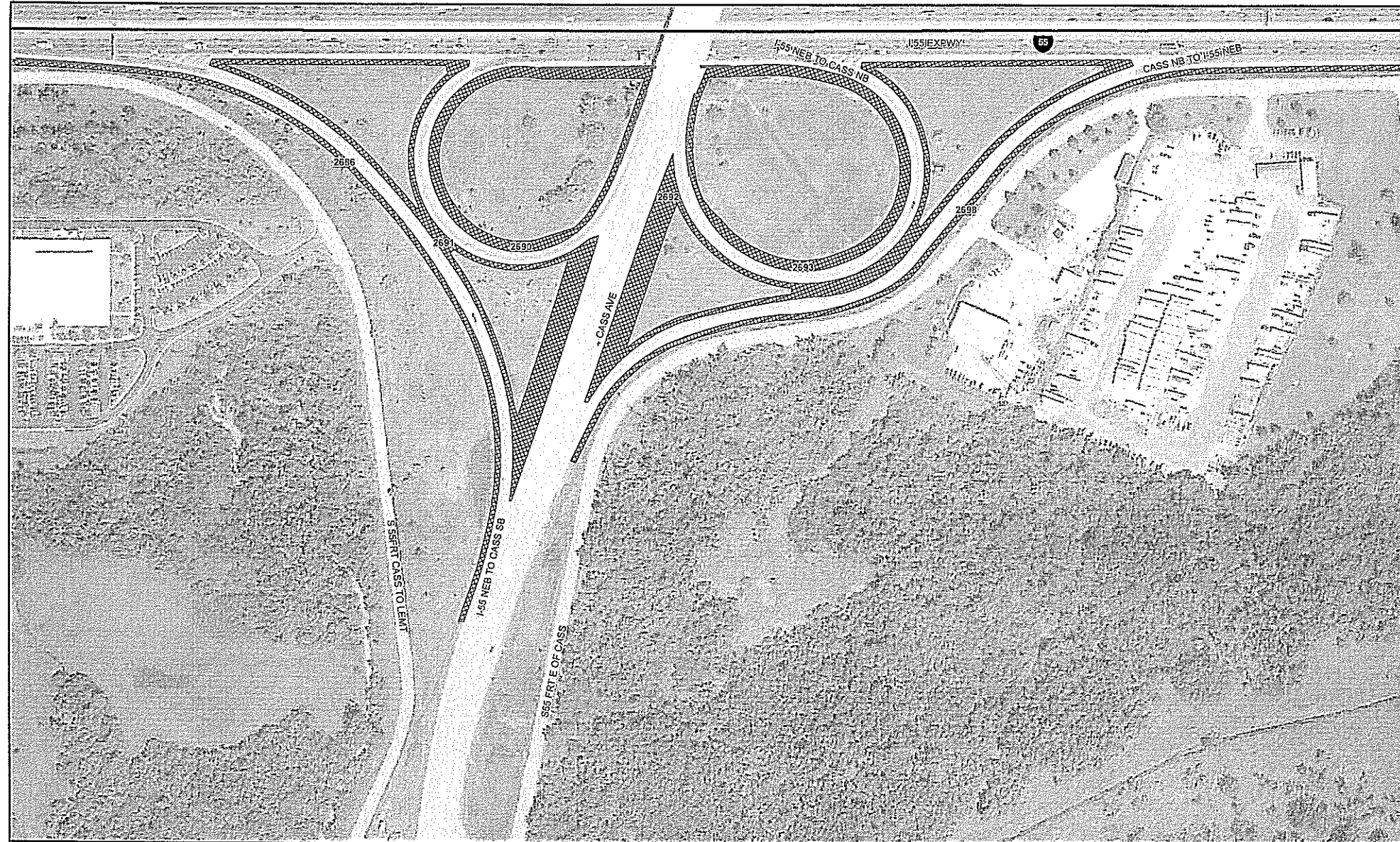
ILLINOIS DEPARTMENT OF TRANSPORTATION

MOWING

SAMPLE WORK ORDER

ROUTE	SECTION	COUNTY	TOTAL SHEETS	SHEET NUMBER
VARIOUS	2012-062 I	VARIOUS	9	5

CONTRACT 60V70



<p>STATE OF ILLINOIS DEPARTMENT OF TRANSPORTATION</p> <p>LANDSCAPE MAINTENANCE</p>	<p>0 100 200</p> <p>Feet</p>	<p>STRUCTURES</p> <ul style="list-style-type: none"> Guardrail Sound Wall Concrete Barrier Wall Other Wall Fence 	<p>MOWING</p> <ul style="list-style-type: none"> Mowing (Acre) 	<p>WEED CONTROL</p> <p>WEED CONTROL</p>	<p>Map Prepared by: <i>Hey and Associates, Inc.</i></p> <p>Team Section: 137 - I-55</p> <p>Route: FAI-55</p> <p>Panel Number: 137-FAI-55-77</p>	<p>Contract #: Yard</p> <p>Work Order #: Y06</p> <p>Sheet #: 32 of 39</p>

ILLINOIS DEPARTMENT OF TRANSPORTATION

MOWING

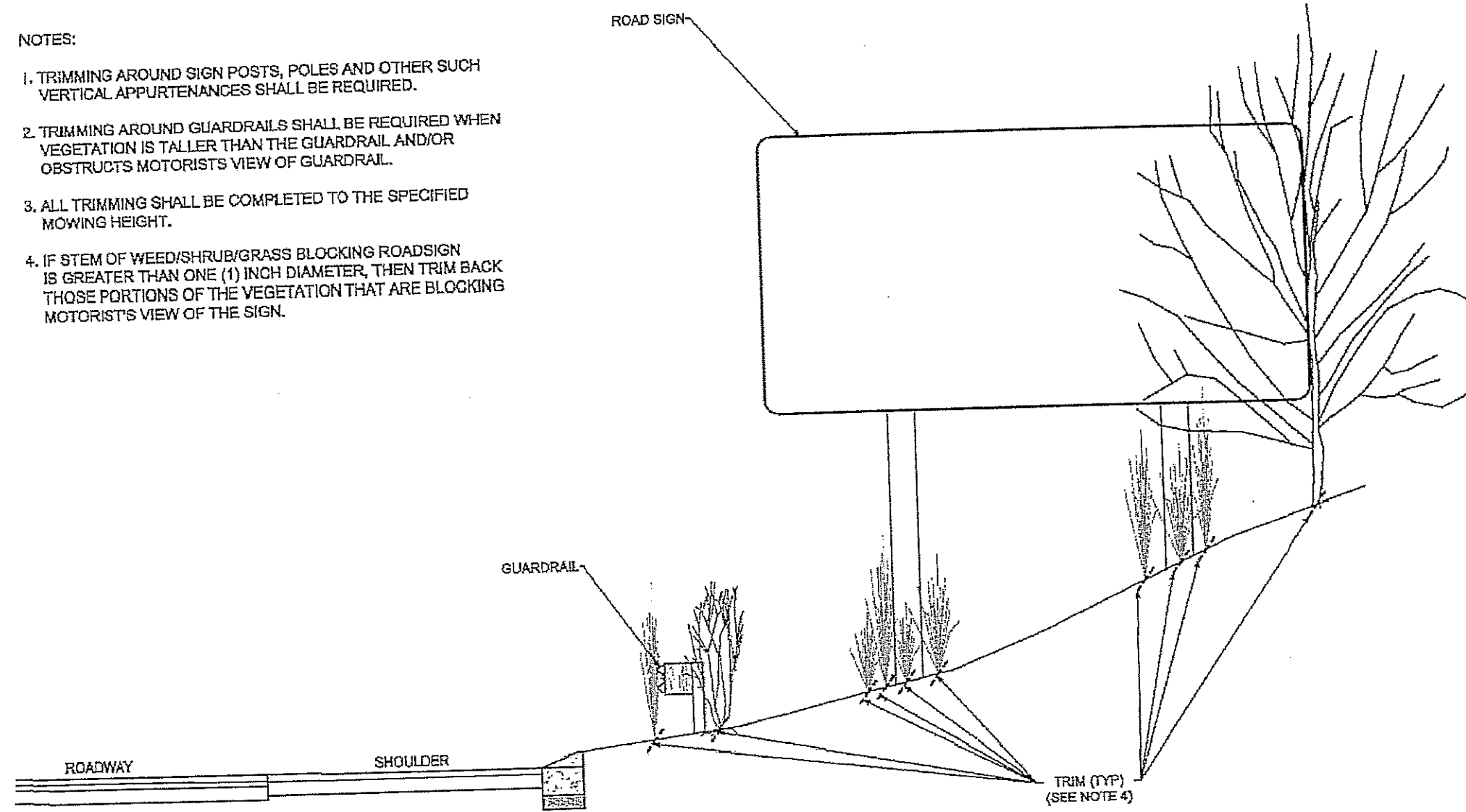
MOWING MAP TYPICAL

ROUTE	SECTION	COUNTY	TOTAL SHEETS	SHEET NUMBER
VARIOUS	2012-062 I	VARIOUS	9	6

CONTRACT 60V70

NOTES:

1. TRIMMING AROUND SIGN POSTS, POLES AND OTHER SUCH VERTICAL APPURTENANCES SHALL BE REQUIRED.
2. TRIMMING AROUND GUARDRAILS SHALL BE REQUIRED WHEN VEGETATION IS TALLER THAN THE GUARDRAIL AND/OR OBSTRUCTS MOTORISTS VIEW OF GUARDRAIL.
3. ALL TRIMMING SHALL BE COMPLETED TO THE SPECIFIED MOWING HEIGHT.
4. IF STEM OF WEED/SHRUB/GRASS BLOCKING ROADSIGN IS GREATER THAN ONE (1) INCH DIAMETER, THEN TRIM BACK THOSE PORTIONS OF THE VEGETATION THAT ARE BLOCKING MOTORIST'S VIEW OF THE SIGN.

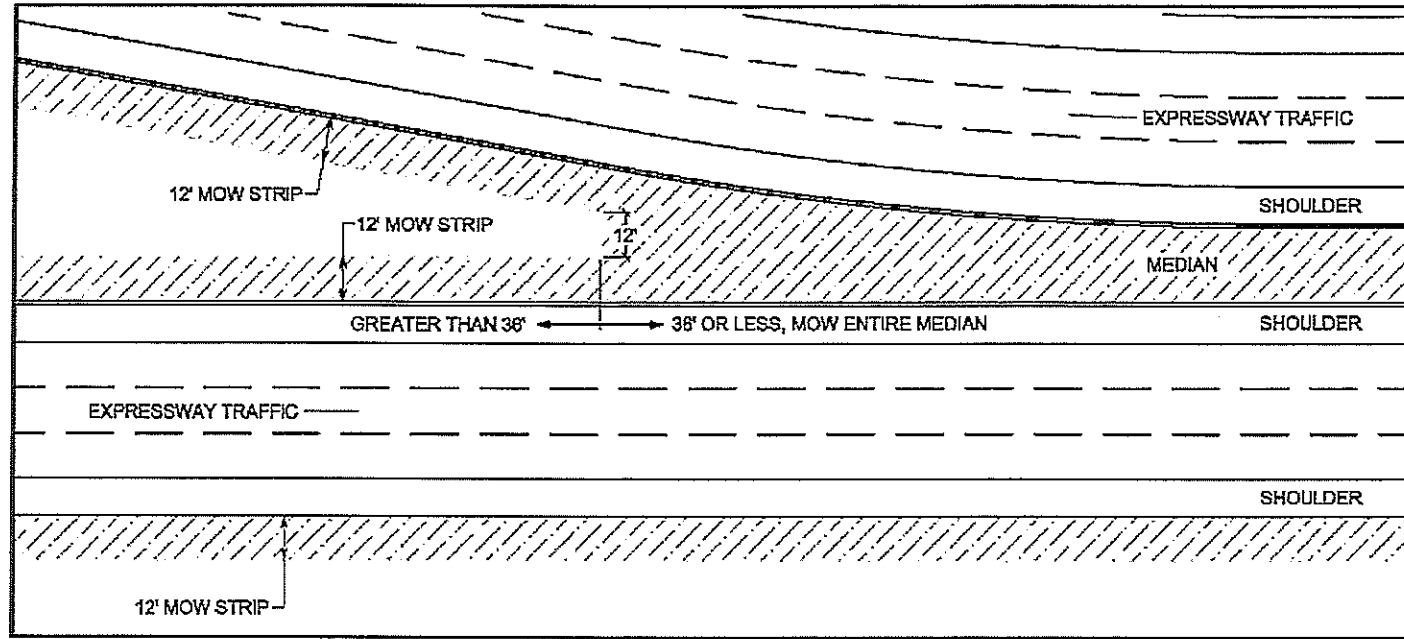


Mowing Detail
Not to Scale
Trimming

ILLINOIS DEPARTMENT OF TRANSPORTATION

MOWING
TRIMMING DETAIL

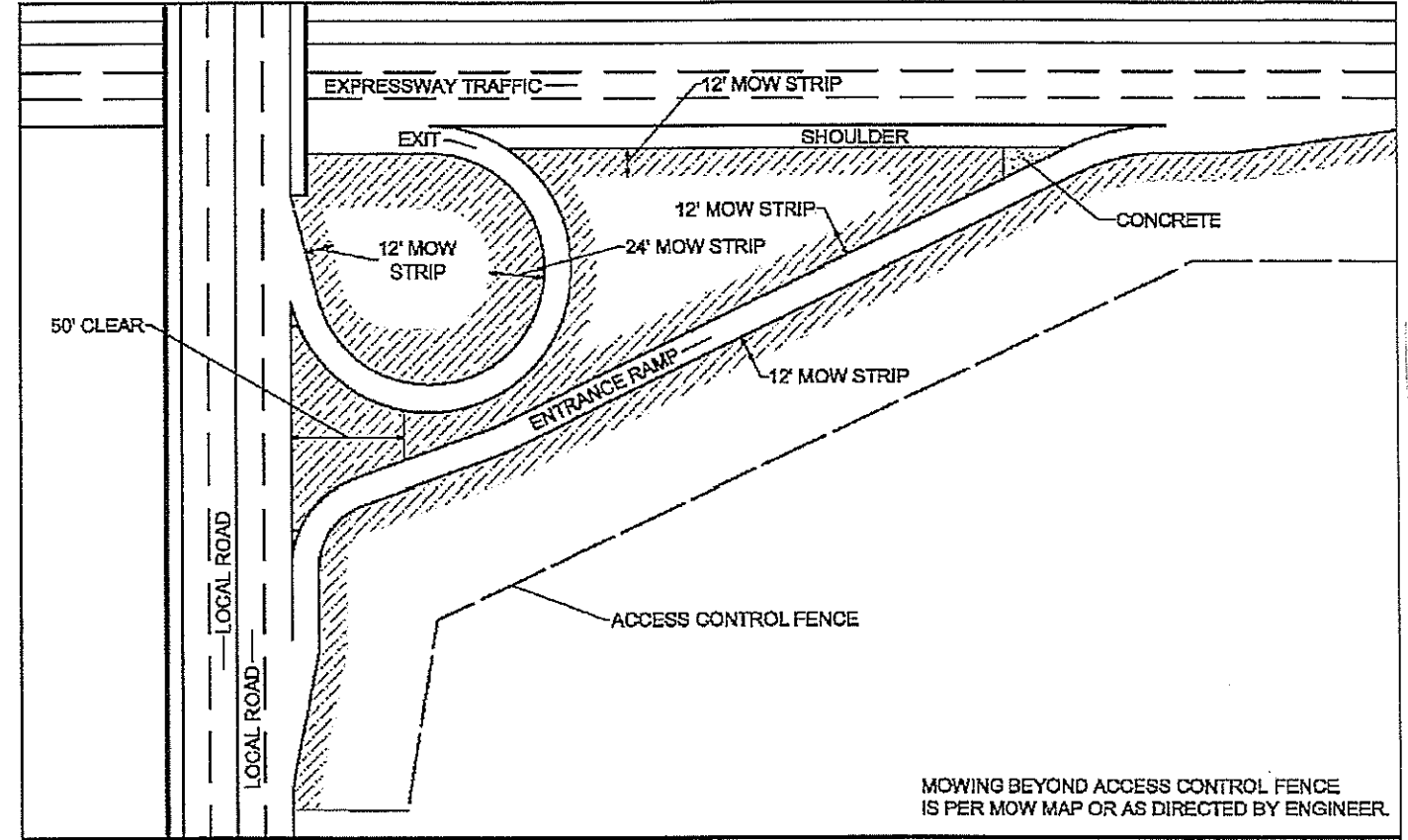
ROUTE	SECTION	COUNTY	TOTAL SHEETS	SHEET NUMBER
VARIOUS	2012-062 I	VARIOUS	9	7



Mowing Detail #1

Not to Scale

Medians

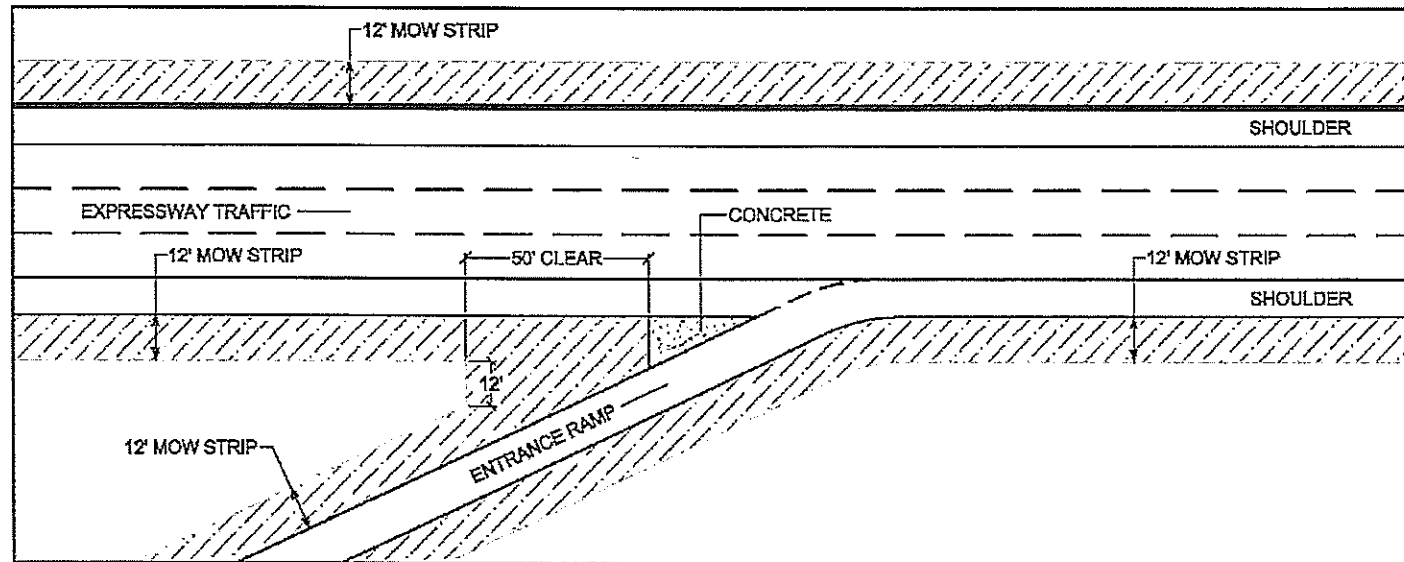


Mowing Detail #2

Not to Scale

Circular Ramp and Local Road

MOWING BEYOND ACCESS CONTROL FENCE IS PER MOW MAP OR AS DIRECTED BY ENGINEER.



Mowing Detail #3

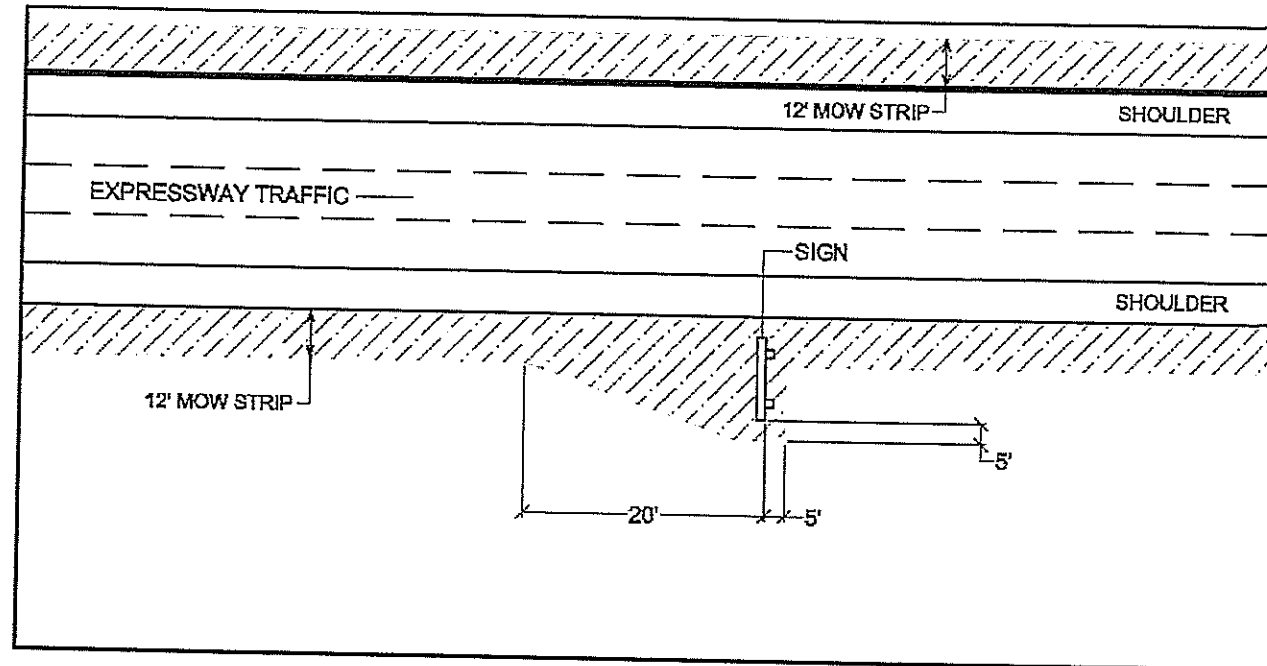
Not to Scale

Straight Merge Ramp

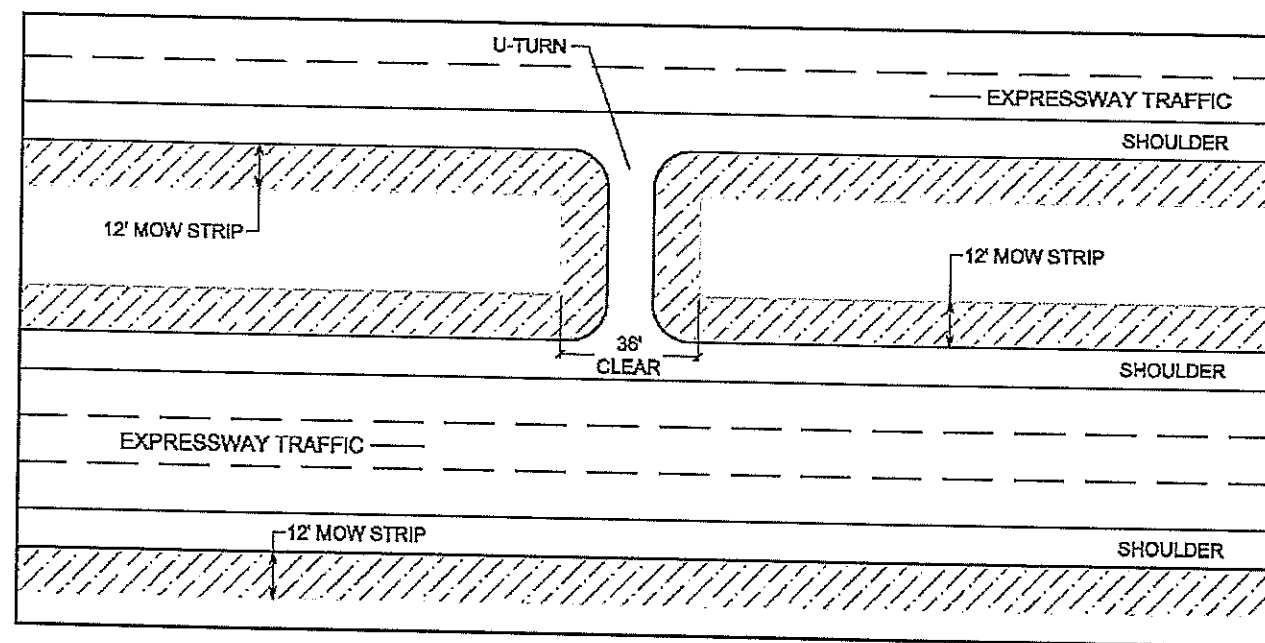
ILLINOIS DEPARTMENT OF TRANSPORTATION
MOWING
MOWING DETAILS #1 #2 & #3

ROUTE	SECTION	COUNTY	TOTAL SHEETS	SHEET NUMBER
VARIOUS	2012-062 I	VARIOUS	9	8

CONTRACT 60V70



Not to Scale Mowing Detail #4
Roadway Signs



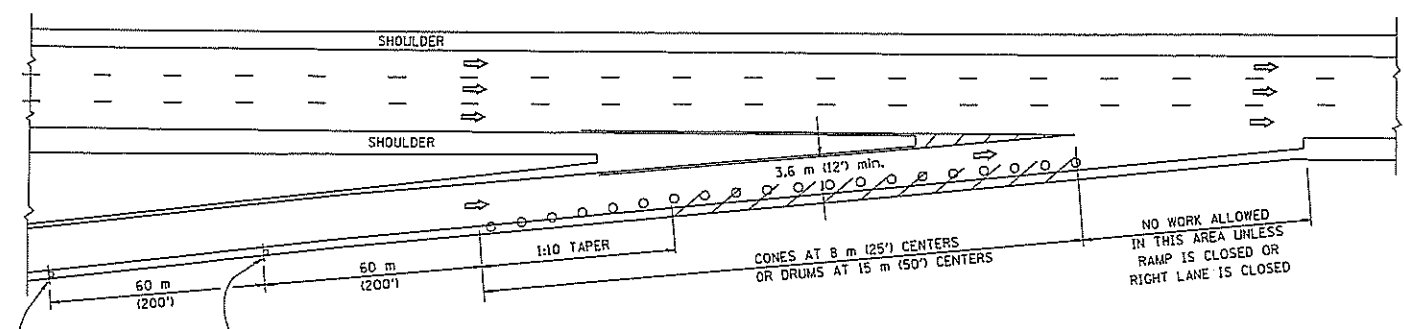
Not to Scale Mowing Detail #5
U-Turns

ILLINOIS DEPARTMENT OF TRANSPORTATION
MOWING
MOWING DETAILS #4 & #5

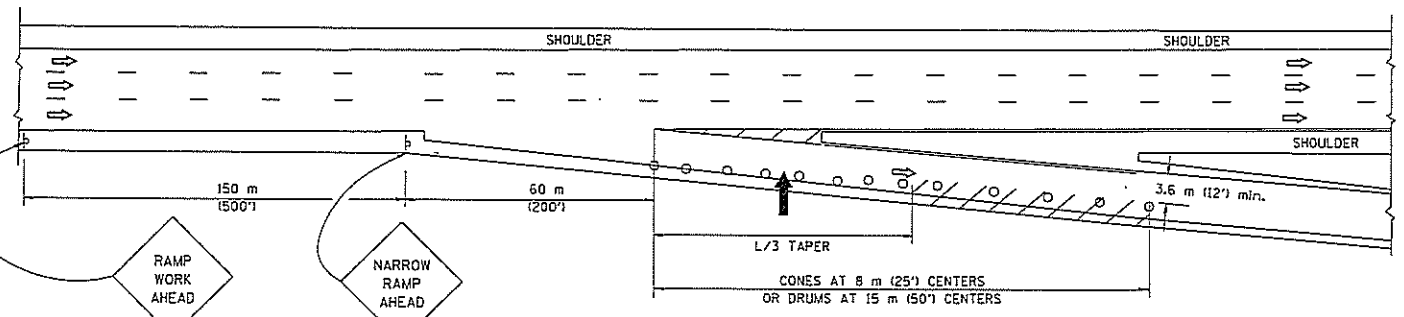
PARTIAL RAMP CLOSURE DETAILS

SHOULDER CLOSURE DETAILS

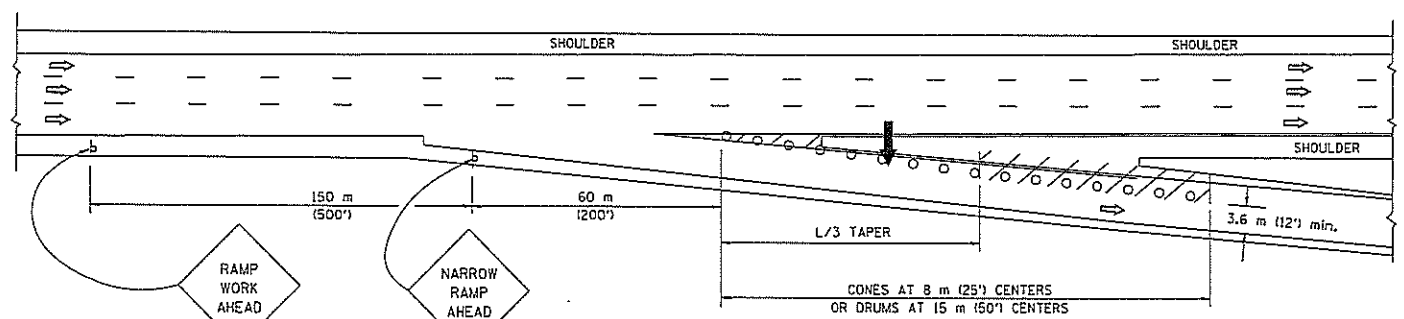
F.A. RTE.	SECTION	COUNTY	TOTAL SHEETS	SHEET NO.
	2012-1002	WAR.	9	9
STA.	TO STA.			
FED. ROAD DIST. NO.	ILLINOIS	FED. AID PROJECT		



TYPICAL ENTRANCE RAMP



TYPICAL EXIT RAMP



TYPICAL EXIT RAMP

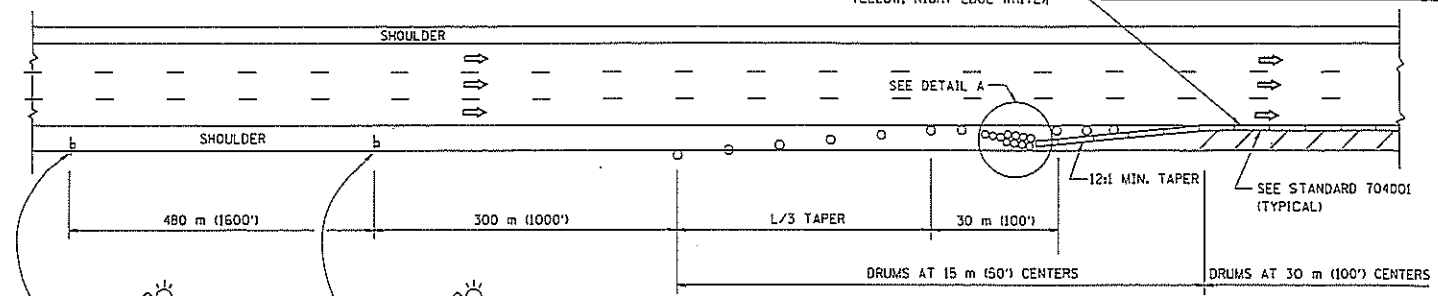
SYMBOLS

- ARROWBOARD
- WORK AREA
- SIGN ON PORTABLE OR PERMANENT SUPPORT
- FLAGGER WITH CONTROL SIGN
- DRUM WITH MONO-DIRECTIONAL STEADY BURNING LIGHT
- CONES - 700 (28) IN HEIGHT

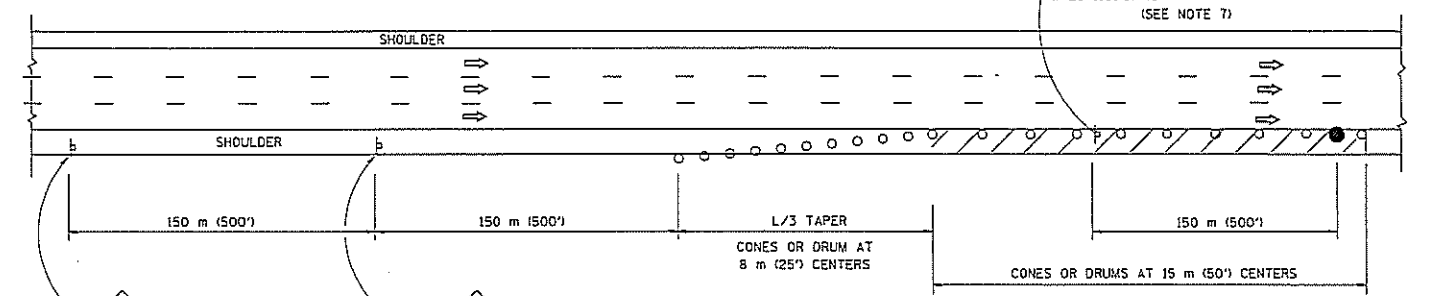
GENERAL NOTES

1. THE "L" DISTANCE EQUALS:

SPEED LIMIT	FORMULAS
80 km/h (45 mph) OR GREATER:	METRIC $L=0.65(W)(S)$ ENGLISH $L=(W)(S)$
	W = WIDTH OF OFFSET IN METERS (FEET)
	S = NORMAL POSTED SPEED KM/H (MPH)
2. PLASTIC DRUMS WITH HIGH PERFORMANCE REFLECTIVE SHEETING AND STEADY BURNING LIGHTS ARE REQUIRED FOR ALL NIGHTTIME CLOSURES.
3. ALL SIGNS SHALL BE POST MOUNTED IF THE CLOSURE TIME EXCEEDS FOUR DAYS.
4. FLASHING LIGHTS SHALL BE USED DURING THE HOURS OF DARKNESS AND SHALL BE INSTALLED ABOVE THE FIRST TWO SETS OF SIGNS.
5. THE IMPACT ATTENUATOR, TEMPORARY IS NOT REQUIRED WHEN THE TEMPORARY CONCRETE BARRIER WALL IS PROTECTED BY OR IS TIED INTO THE EXISTING GUARDRAIL. IF OFFSET IS LESS THAN 5 FEET USE "TRAFFIC BARRIER TERMINAL, TYPE III, TEMPORARY" DEVICE TO MEET NCHRP350 FOR POSTED SPEED.
6. AUTHORIZATION FROM THE DISTRICT'S BUREAU OF TRAFFIC IS REQUIRED FOR ALL FREEWAY CLOSURES.
7. THE FLAGGER AND FLAGGER SIGN ARE REQUIRED AT THE ABOVE WORK SITES WHEN:
 - a. FOUR OR MORE WORK VEHICLES ENTER THE TRAFFIC LANES IN A ONE HOUR PERIOD.
 - b. THE WORK ACTIVITY REQUIRES FREQUENT ENCROACHMENT INTO THE LANE OPEN TO TRAFFIC.
 THE FLAGGER SHALL BE STATIONED APPROXIMATELY 30 m (100') TO 60 m (200') IN ADVANCE OF THE WORKERS.

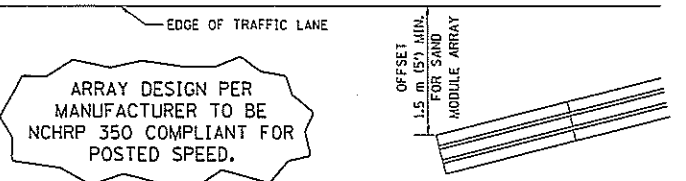


PERMANENT SHOULDER CLOSURE



DAYTIME SHOULDER CLOSURE

THIS DETAIL IS USED WHERE:
 1. VEHICLES, EQUIPMENT, WORKERS OR THEIR ACTIVITIES ENCROACH IN AN AREA CLOSER THAN 4.5 m (15') TO THE EDGE OF PAVEMENT FOR A PERIOD IN EXCESS OF 15 MINUTES.



ARRAY DESIGN PER MANUFACTURER TO BE NCHRP 350 COMPLIANT FOR POSTED SPEED.

DETAIL "A"
 IMPACT ATTENUATOR, TEMPORARY
 (SEE NOTE 5)

ALL DIMENSIONS ARE IN MILLIMETERS (INCHES) UNLESS OTHERWISE SHOWN.

REVISIONS	
NAME	DATE
DWS	11/96
JAF	12/02
NCHRP 350	04/03
JAF	2/05

ILLINOIS DEPARTMENT OF TRANSPORTATION
 TRAFFIC CONTROL DETAILS
 FOR FREEWAY
 SHOULDER CLOSURES
 PARTIAL RAMP CLOSURES

SCALE: NONE
 DATE: 3/1/2006

DESIGNED BY: DWS
 DRAWN BY:
 CHECKED BY:

PLOT DATE = 3/1/2006
 FILE NAME = K:\dws\11417.dgn
 PLOT SCALE = 800000 / 1 IN.
 USER NAME = jayga