

1-18-13 LETTING ITEM 013

STATE OF ILLINOIS
DEPARTMENT OF TRANSPORTATION
DIVISION OF HIGHWAYS

**PROPOSED
HIGHWAY PLANS**

VARIOUS ROUTES
VARIOUS LOCATIONS
SECTION 2012-074BP
BRIDGE PAINTING
COOK COUNTY
C-91-086-13

| | | | | |
|-----------------------------|------------|--------|--------------|-----------|
| F.A.J. RTE. | SECTION | COUNTY | TOTAL SHEETS | SHEET NO. |
| VAR. | 2012-074BP | COOK | 27 | 1 |
| ILLINOIS CONTRACT NO. 60V84 | | | | |

D-91-086-13



FOR INDEX OF SHEETS, SEE SHEET NO. 2

IMPROVEMENTS ARE LOCATED IN THE CITIES OF MARKHAM AND CHICAGO HEIGHTS; AND THE VILLAGES OF FLOSSMOOR, WORTH AND THORNTON.

LOCATION #1 - F.A.I. ROUTE 57 (I-57)
AT F.A.U. ROUTE 3778 (CRAWFORD AVENUE)
SN 016-1015

LOCATION #2 - F.A.I. ROUTE 57 (I-57)
AT FLOSSMOOR RD.
SN 016-1099

LOCATION #3 - F.A.U. ROUTE 1620 (THORNTON LANSING RD.)
OVER THORN CREEK
SN 016-0573

LOCATION #4 - F.A.U. ROUTE 1631 (JOE ORR RD.)
OVER THORN CREEK
SN 016-0919

LOCATION #5 - F.A.P. ROUTE 348; IL 43 (HARLEM AVE.)
OVER STONY CREEK
SN 016-0322

J.U.L.I.E.
JOINT UTILITY LOCATION INFORMATION FOR EXCAVATION
1-800-892-0123
OR 811

PROJECT ENGINEER: ROBERT BORO (847)705-4237
PROJECT MANAGER: ISSAM RAYYAN

CONTRACT NO. 60V84

FOR LOCATION MAPS SEE SHEETS 5 TO 8

STATE OF ILLINOIS
DEPARTMENT OF TRANSPORTATION
DIVISION OF HIGHWAYS

SUBMITTED October 19 20 12
John Feltman AS
DEPUTY DIRECTOR OF HIGHWAYS, REGION ENGINEER

Dec 7 20 12
John D. Baranzelli, P.E. /bc
acting ENGINEER OF DESIGN AND ENVIRONMENT

Dec 7 20 12
William R. Frey /bc
acting DIRECTOR OF HIGHWAYS, CHIEF ENGINEER

**PRINTED BY THE AUTHORITY
OF THE STATE OF ILLINOIS**

INDEX OF SHEETS

| SHEET NO. | DESCRIPTION |
|-----------|--|
| 1 | COVER SHEET |
| 2 | INDEX OF SHEETS |
| 3 | NOTES FOR BRIDGE PAINTING |
| 4 | SUMMARY OF QUANTITIES |
| 5-8 | LOCATION MAPS |
| 9-12 | BRIDGE PAINTING PLANS LOC) 1 (SN 016-1015) |
| 13-15 | BRIDGE PAINTING PLANS LOC) 2 (SN 016-1099) |
| 16-18 | BRIDGE PAINTING PLANS LOC) 3 (SN 016-0573) |
| 19-21 | BRIDGE PAINTING PLANS LOC) 4 (SN 016-0919) |
| 21-23 | BRIDGE PAINTING PLANS LOC) 5 (SN 016-0322) |
| 24 | ENTRANCE AND EXIT RAMP CLOSURE DETAILS (TC-08) |
| 25 | SINGLE LANE WEAVE AND MULTI-LANE WEAVE (TC-09) |
| 26 | TRAFFIC CONTROL DETAILS FOR FREEWAYS SHOULDER CLOSURES AND PARTIAL RAMP CLOSURES (TC-17) |
| 27 | ARTERIAL ROAD INFORMATION SIGN (TC-22) |

STATE STANDARDS

| | |
|-----------|---|
| 701101-03 | OFF-RD OPERATIONS, MULTILANE, 15' TO 24' FROM PAVEMENT EDGE |
| 701301-04 | LANE CLOSURE, 2L, 2W, SHORT TIME OPERATIONS |
| 701400-06 | APPROACH TO LANE CLOSURE, FREEWAY/EXPRESSWAY |
| 701401-07 | LANE CLOSURE, FREEWAY/EXPRESSWAY |
| 701411-08 | MULTI-LANE, TRAFFIC CONTROL AT ENTRANCE OR EXIT RAMPS |
| 701422-05 | LANE CLOSURE, MULTILANE, FOR SPEEDS > 45 MPH TO 55 MPH |
| 701426-05 | MULTI-LANE, INTERMITTENT OR MOVING OPERATION |
| 701446-04 | TWO LANE CLOSURE FREEWAY/EXPRESSWAY |
| 701501-06 | URBAN LANE CLOSURE, 2L, 2W, UNDIVIDED |
| 701602-06 | URBAN LANE CLOSURE, MULTILANE, 2W WITH BIDIRECTIONAL LEFT TURN LANE |
| 701606-08 | URBAN LANE CLOSURE, MULTILANE, 2W WITH MOUNTABLE MEDIAN |
| 701801-05 | SIDEWALK, CORNER OR CROSSWALK CLOSURE |
| 701901-03 | TRAFFIC CONTROL DEVICES |

GENERAL NOTES

BEFORE STARTING ANY EXCAVATION, THE CONTRACTOR SHALL CALL "J.U.L.I.E." AT (800) 892-0123 OR 811 FOR FIELD LOCATIONS OF BURIED ELECTRIC, TELEPHONE AND GAS UTILITIES. 48 HOUR NOTIFICATION IS REQUIRED.

THE CONTRACTOR SHALL COORDINATE CONSTRUCTION ACTIVITIES WITH UTILITY COMPANIES, THE CITIES OF MARKHAM AND CHICAGO HEIGHTS; AND THE VILLAGES OF FLOSSMOOR, WORTH AND THORNTON.

THE CONTRACTOR WILL NOT BE ALLOWED TO SET UP A YARD OR FIELD OFFICE ON STATE PROPERTY WITHOUT WRITTEN PERMISSION FROM THE DEPARTMENT.

IT SHALL BE THE CONTRACTOR'S RESPONSIBILITY TO VERIFY ALL DIMENSIONS AND CONDITIONS EXISTING IN THE FIELD PRIOR TO CONSTRUCTION AND ORDERING OF MATERIALS.

THE CONTRACTOR SHALL CONTACT THE DISTRICT ONE TRAFFIC CONTROL SUPERVISOR FOR EXPRESSWAYS AT (847)705-4151 AND FOR ARTERIALS AT (847)705-4470, A MINIMUM OF 72 HOURS IN ADVANCE OF BEGINNING WORK.

THESE PLANS HAVE BEEN PREPARED FROM NOTES RECEIVED FROM THE BUREAU OF MAINTENANCE BRIDGE INSPECTORS.

THE CONTRACTOR SHALL BE REQUIRED TO PROVIDE ACCESS TO ABUTTING PROPERTY AT ALL TIMES DURING THE CONSTRUCTION OF THIS PROJECT.

DO NOT SCALE PLANS FOR CONSTRUCTION DIMENSIONS.

IT SHALL BE THE CONTRACTOR'S RESPONSIBILITY TO PROTECT AND PRESERVE THE EXISTING BRIDGE LIGHTING AT ANY LOCATIONS THAT LIGHTING IS ENCOUNTERED ADJACENT TO AN AREA TO BE CLEANED AND PAINTED.

THE "ARTERIAL ROAD INFORMATION SIGN (TC-22)" AND THE SPECIAL PROVISION FOR "PUBLIC CONVENIENCE AND SAFETY" ARE APPLICABLE ONLY TO ARTERIAL ROADS AND SHALL NOT BE APPLIED TO EXPRESSWAYS.

| | | | | | | | | | | | |
|--|-----------------------------|------------|-----------|---|---|---------------------------------|------------|--------|--------|-------|----|
| FILE NAME * | USER NAME * r10sfj | DESIGNED - | REVISED - | STATE OF ILLINOIS DEPARTMENT OF TRANSPORTATION | INDEX OF SHEETS, GENERAL NOTES & STATE STANDARDS | F.A.* | SECTION | COUNTY | TOTAL | SHEET | |
| cr:\p\work\p\10sfj\10sfj\08319437\018061 | ahp\plan.dgn | DRAWN - | REVISED - | | | VAR. | 2012-074BP | COOK | 27 | 2 | |
| #MODELNAME# | PLOT SCALE * 100.0000' / 1" | CHECKED - | REVISED - | | | CONTRACT NO. 60V84 | | | | | |
| | PLOT DATE * 11/9/2012 | DATE - | REVISED - | | | SCALE: | SHEET | OF | SHEETS | STA. | TO |
| | | | | | | ILLINOIS NON - FED. AID PROJECT | | | | | |

GENERAL NOTES (BRIDGE PAINTING)

CLEANING AND PAINTING OF THE EXISTING STRUCTURAL STEEL SHALL BE AS SPECIFIED IN THE SPECIAL PROVISION FOR "CLEANING AND PAINTING EXISTING STEEL STRUCTURES"

THE AREAS DESIGNATED TO BE CLEANED PER NEAR WHITE BLAST CLEANING SSPC-SP10 SHALL BE PAINTED ACCORDING TO THE REQUIREMENTS OF PAINT SYSTEM 1-OZ/E/U. THE COLOR OF THE FINAL FINISH COAT FOR ALL INTERIOR STEEL SURFACES SHALL BE GRAY, MUNSELL NO. 5B 7/1.

THE COLOR OF THE FINAL FINISH COAT FOR THE EXTERIOR AND BOTTOM FLANGE OF THE FASCIA BEAMS SHALL MATCH THE REDDISH BROWN, MUNSELL NO. 2.5YR 3/4. THE COLOR OF THE FINAL FINISH COAT FOR THE HANDRAIL (LOC 4 & LOC 5) SHALL BE GRAY, MUNSELL NO 5B 7/1.

A MINIMUM OF ONE (1) AIR MONITOR WILL BE REQUIRED TO MONITOR ABRASIVE BLASTING OPERATIONS FOR ALL STRUCTURES. SEE SPECIAL PROVISION FOR "CONTAINMENT AND DISPOSAL OF LEAD PAINT CLEANING RESIDUE"

LOC 1) SN 016-1015

ALL BEAMS, DIAPHRAGMS, BEARINGS AND OTHER STRUCTURAL STEEL WITHIN FIVE (5) FEET, (MEASURED ALONG THE BEAM) OF EITHER SIDE OF ALL DECK JOINTS, SHALL BE CLEANED PER NEAR WHITE BLAST CLEANING SSPC -SP10. FOR LOC 1) THE EXTERIOR SURFACES AND TOP AND BOTTOM OF THE BOTTOM FLANGE OF THE FASCIA BEAMS (SEE FIGURE 1) SHALL BE CLEANED PER NEAR WHITE BLAST CLEANING SSPC-SP10.

LOC 2) SN 016-1099

ALL BEAMS, DIAPHRAGMS, BEARINGS AND OTHER STRUCTURAL STEEL WITHIN FIVE (5) FEET, (MEASURED ALONG THE BEAM) OF EITHER SIDE OF ALL DECK JOINTS, SHALL BE CLEANED PER NEAR WHITE BLAST CLEANING SSPC -SP10. FOR LOC 2) THE EXTERIOR SURFACES AND TOP AND BOTTOM OF THE BOTTOM FLANGE OF THE FASCIA BEAMS (SEE FIGURE 2) SHALL BE CLEANED PER NEAR WHITE BLAST CLEANING SSPC-SP10.

LOC 3) SN 016-0573

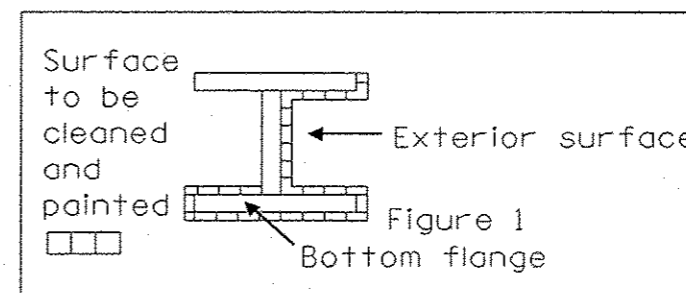
ALL EXISTING STEEL SHALL BE CLEANED PER NEAR WHITE BLAST CLEANING SSPC-SP10.

LOC 4) SN 016-0919

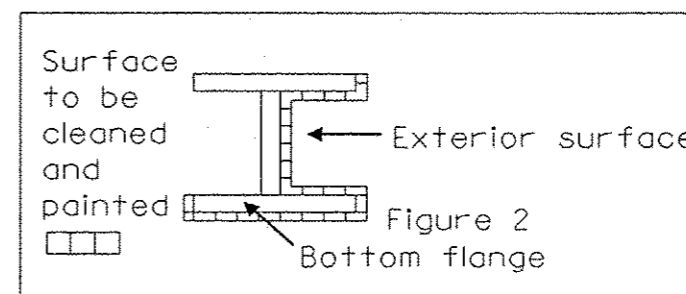
ALL EXISTING STEEL SHALL BE CLEANED PER NEAR WHITE BLAST CLEANING SSPC-SP10. ALL EXISTING STEEL HANDRAIL SHALL BE CLEANED PER NEAR WHITE BLAST CLEANING SSPC-SP10.

LOC 5) SN 016-0322

ALL EXISTING STEEL HANDRAIL SHALL BE CLEANED PER NEAR WHITE BLAST CLEANING SSPC-SP10.



FASCIA BEAM PAINTING DETAIL FOR LOCATION 1
FIGURE 1



FASCIA BEAM PAINTING DETAIL FOR LOCATION 2
FIGURE 2

| | | | | | | | | | | | | | |
|--------------------------------------|-------------------------------|------------|-----------|---|----------------------------|-------|----|--------|--------|------------|--------|---------------------------------|-----------|
| FILE NAME * | USER NAME * r10sfj | DESIGNED - | REVISED - | STATE OF ILLINOIS DEPARTMENT OF TRANSPORTATION | GENERAL PAINT NOTES | | | | F.A. # | SECTION | COUNTY | TOTAL SHEETS | SHEET NO. |
| c:\pwork\pwork\10sfj\10319439\DI0861 | shtripion.dgn | DRAWN - | REVISED - | | | | | | VAR. | 2012-074BP | COOK | 27 | 3 |
| #MODEL NAME # | PLOT SCALE * 100.0000 * / in. | CHECKED - | REVISED - | | SCALE: | SHEET | OF | SHEETS | STA. | TO | STA. | CONTRACT NO. 60V84 | |
| | PLOT DATE * 11/9/2012 | DATE - | REVISED - | | | | | | | | | ILLINOIS NON - FED. AID PROJECT | |

| SUMMARY OF QUANTITIES | | | URBAN 100% STATE TOTAL QUANTITIES | CONSTRUCTION TYPE CODE: 0014 | | | | | URBAN 100% STATE TOTAL QUANTITIES | CONSTRUCTION TYPE CODE: 0014 | | | | | |
|-----------------------|--|--------|--|------------------------------|-----------------------|-----------------------|-----------------------|-----------------------|--|------------------------------|------|------|-----------------------|-----------------------|-----------------------|
| CODE NO | ITEM | UNIT | | LOC. 1 SN 016-1015 | LOC. 2 SN 016-1099 | LOC. 3 SN 016-0573 | LOC. 4 SN 016-0919 | LOC. 5 SN 016-0322 | | CODE NO | ITEM | UNIT | LOC. 1 SN 016-1015 | LOC. 2 SN 016-1099 | LOC. 3 SN 016-0573 |
| 67000400 | ENGINEER'S FIELD OFFICE, TYPE A | CAL MO | 6 | 2 | 2 | 1 | 0.5 | 0.5 | | | | | | | |
| 67100100 | MOBILIZATION | L SUM | 1 | 0.2 | 0.2 | 0.2 | 0.2 | 0.2 | | | | | | | |
| 70102620 | TRAFFIC CONTROL AND PROTECTION, STANDARD 701501 | L SUM | 1 | | 1 | | | | | | | | | | |
| 70102625 | TRAFFIC CONTROL AND PROTECTION, STANDARD 701606 | L SUM | 1 | | | 0.5 | 0.5 | | | | | | | | |
| 70102632 | TRAFFIC CONTROL AND PROTECTION, STANDARD 701602 | L SUM | 1 | | | | | 1 | | | | | | | |
| 70102640 | TRAFFIC CONTROL AND PROTECTION, STANDARD 701801 | L SUM | 1 | 0.2 | 0.2 | 0.2 | 0.2 | 0.2 | | | | | | | |
| 70200100 | NIGHTTIME WORK ZONE LIGHTING | L SUM | 1 | 0.5 | 0.5 | | | | | | | | | | |
| XT011015 | TRAFFIC CONTROL AND PROTECTION (EXPRESSWAYS) | L SUM | 1 | 0.5 | 0.5 | | | | | | | | | | |
| Z0007112 | CONTAINMENT AND DISPOSAL OF LEAD PAINT CLEANING RESIDUES | L SUM | 1 | 0.2 | 0.2 | 0.2 | 0.2 | 0.2 | | | | | | | |
| Z0010501 | CLEANING AND PAINTING STEEL BRIDGE NO.1 | L SUM | 1 | 1 | | | | | | | | | | | |
| Z0010502 | CLEANING AND PAINTING STEEL BRIDGE NO.2 | L SUM | 1 | | 1 | | | | | | | | | | |
| Z0010503 | CLEANING AND PAINTING STEEL BRIDGE NO.3 | L SUM | 1 | | | 1 | | | | | | | | | |
| Z0010504 | CLEANING AND PAINTING STEEL BRIDGE NO.4 | L SUM | 1 | | | | 1 | | | | | | | | |
| Z0010505 | CLEANING AND PAINTING STEEL BRIDGE NO.5 | L SUM | 1 | | | | | 1 | | | | | | | |
| Z0030850 | TEMPORARY INFORMATION SIGNING | SO FT | 154.2 | | | 51.4 | 51.4 | 51.4 | | | | | | | |

FILE NAME:
C:\work\pilot\test\p00359439-000603-sm-plns.dwg

USER NAME: j1007j
PLOT SCALE: 1/320000 / 1"=
PLOT DATE: 11/15/2012

DESIGNED -
DRAWN -
CHECKED -
DATE -

REVISED -
REVISED -
REVISED -
REVISED -

**STATE OF ILLINOIS
DEPARTMENT OF TRANSPORTATION**

SUMMARY OF QUANTITIES

SCALE: SHEET NO. OF SHEETS STA. TO STA.

| | | | | |
|---|------------|--------|--------------|-----------|
| F.A. RTE. | SECTION | COUNTY | TOTAL SHEETS | SHEET NO. |
| VAR. | 2012-074BP | COOK | 27 | 4 |
| CONTRACT NO. | | | | |
| FED. ROAD DIST. NO. 1 ILLINOIS NON-FED. AID PROJECT | | | | |

15

LOCATION 1) - F.A.I. ROUTE 57 (I-57)
 AT F.A.U. ROUTE 3778 (CRAWFORD
 AVENUE)
 SN 016-1015
 CITY OF MARKHAM

LOCATION 2) - F.A.I. ROUTE 57 (I- 57)
 AT FLOSSMOOR RD.
 SN 016-1099
 VILLAGE OF COUNTRY CLUB HILLS

TRAFFIC DATA

LOC. 1:
 I-57
 ADT (2010) =91,700
 POSTED SPEED LIMIT =55 MPH
 CRAWFORD AVE.
 ADT (2010) =13,300
 POSTED SPEED LIMIT =45 MPH

LOC. 2:
 I-57
 ADT (2010) =87,900
 POSTED SPEED LIMIT =55 MPH
 FLOSSMOOR AVE.
 ADT (2010) =2,350
 POSTED SPEED LIMIT =45 MPH



RICH & BREMEN TOWNSHIPS

| | | | |
|---|------------------------------|------------|-----------|
| FILE NAME = | USER NAME = r1osfj | DESIGNED - | REVISED - |
| et:\pw\work\p1dot\r1osfj\d0319439\0108613\shht-plan.dgn | | DRAWN - | REVISED - |
| \$MODELNAME\$ | PLOT SCALE = 100.0000' / in. | CHECKED - | REVISED - |
| | PLOT DATE = 11/9/2012 | DATE - | REVISED - |

STATE OF ILLINOIS
 DEPARTMENT OF TRANSPORTATION

LOCATION MAP
 LOC 1 & 2

SCALE: SHEET OF SHEETS STA. TO STA.

| | | | | |
|---------------------------------|------------|--------|--------------|-----------|
| F.A. RTE. | SECTION | COUNTY | TOTAL SHEETS | SHEET NO. |
| VAR. | 2012-074BP | COOK | 27 | 5 |
| CONTRACT NO. 60V84 | | | | |
| ILLINOIS NON - FED. AID PROJECT | | | | |

LOCATION #3 - F.A.U. 1620
 (THORNTON LANSING RD.)
 OVER THORN CREEK
 SN 016-0573
 VILLAGE OF THORNTON

R14E

T36N

T35N



THORNTON TOWNSHIP

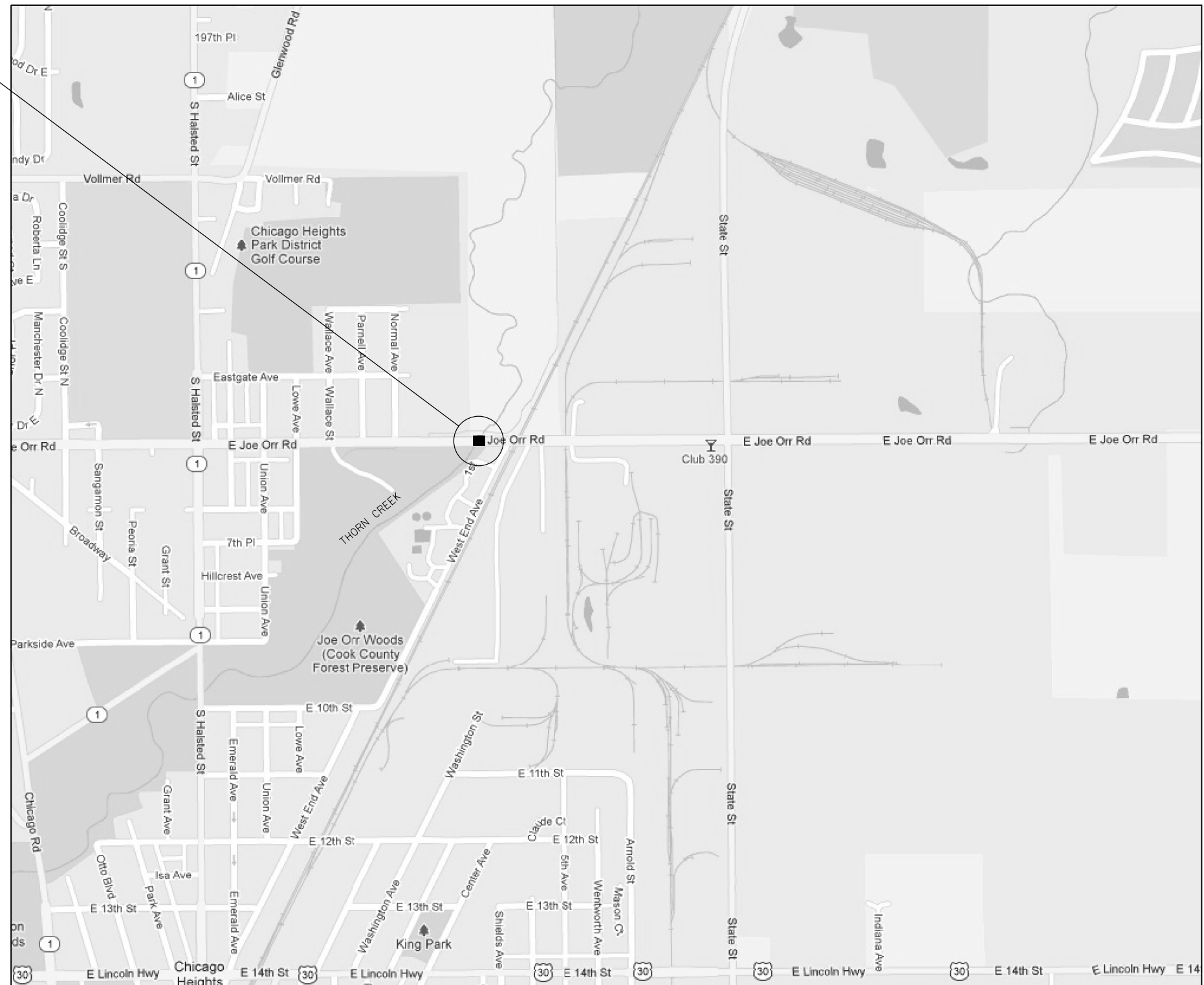
TRAFFIC DATA
 LOC. 3:
 THORNTON LANSING RD.
 ADT (2010) = 7,200
 POSTED SPEED LIMIT = 30 MPH

| | | | | | | | | | | | | | | | | |
|---|--------------------|------------|-----------|---|-------------------------------|-------|----|-----------|---------|--------|--------------|-----------|---------------------------------|------|----|---|
| FILE NAME = | USER NAME = r10sfj | DESIGNED - | REVISED - | STATE OF ILLINOIS DEPARTMENT OF TRANSPORTATION | LOCATION MAP LOC 3 | | | F.A. RTE. | SECTION | COUNTY | TOTAL SHEETS | SHEET NO. | | | | |
| ci:\pw\work\p10sfj\d0319439\0108613\shht-plan.dgn | | DRAWN - | REVISED - | | SCALE: | SHEET | OF | SHEETS | STA. | TO | STA. | VAR. | 2012-074BP | COOK | 27 | 6 |
| \$MODELNAME\$ | | CHECKED - | REVISED - | | | | | | | | | | CONTRACT NO. 60V84 | | | |
| | | DATE - | REVISED - | | | | | | | | | | ILLINOIS NON - FED. AID PROJECT | | | |

LOCATION #4 - F.A.U. 1631
 (JOE ORR RD.)
 OVER THORN CREEK
 SN 016-0919
 CITY OF CHICAGO HEIGHTS

R14E

T35N

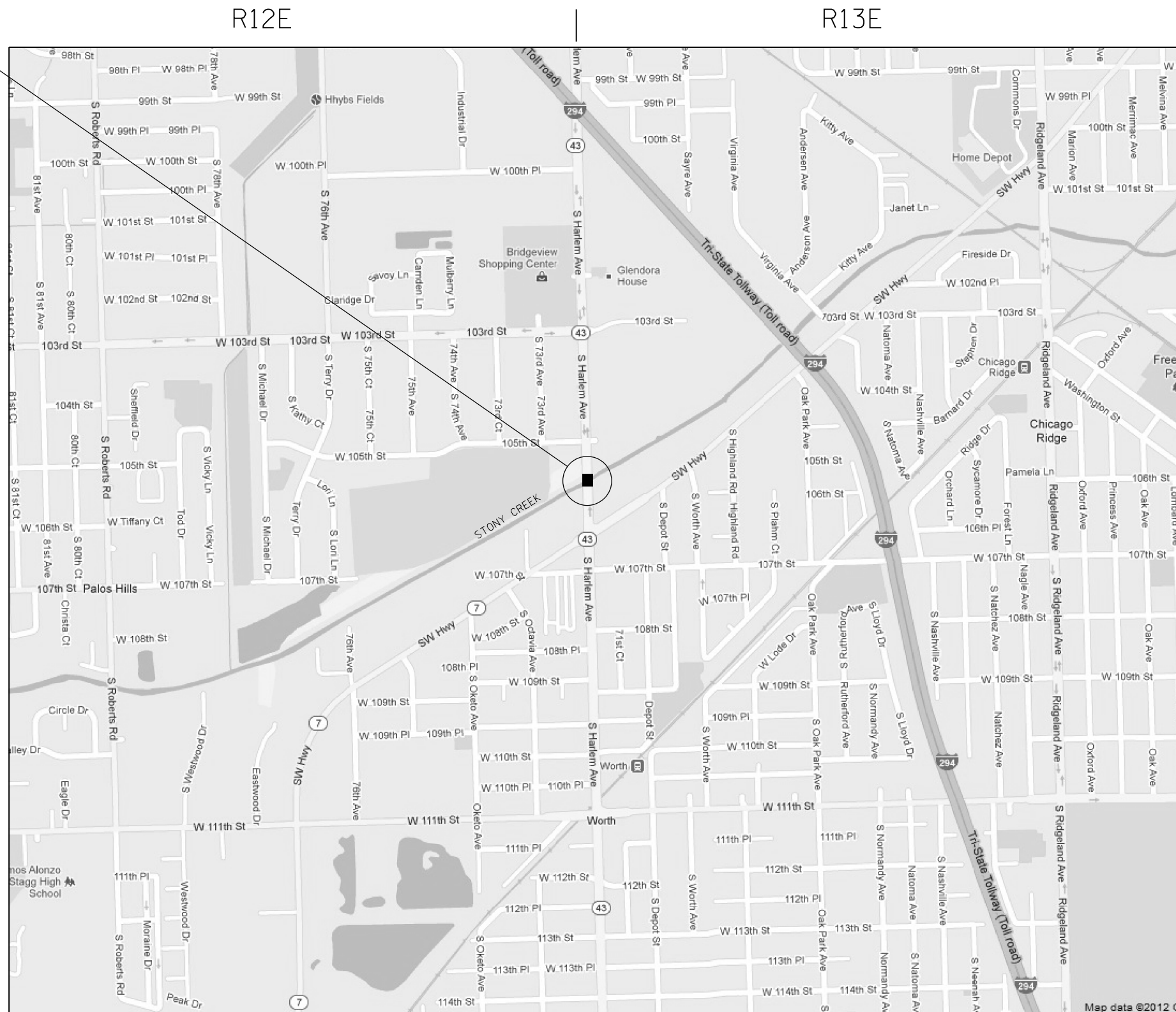


TRAFFIC DATA
 LOC. 4:
JOE ORR RD.
 ADT (2010) = 17,400
 POSTED SPEED LIMIT = 40 MPH

BLOOM TOWNSHIP

| | | | | | | | | | | | | | | | | |
|--|------------------------------|------------|-----------|---|-------------------------------|-------|----|-----------|---------|--------|--------------|-----------|---------------------------------|------|----|---|
| FILE NAME = | USER NAME = r1osfj | DESIGNED - | REVISED - | STATE OF ILLINOIS DEPARTMENT OF TRANSPORTATION | LOCATION MAP LOC 4 | | | F.A. RTE. | SECTION | COUNTY | TOTAL SHEETS | SHEET NO. | | | | |
| ct:\pw\work\p1dot\r1osfj\d0319439\0108613\sheet-plan.dgn | | DRAWN - | REVISED - | | SCALE: | SHEET | OF | SHEETS | STA. | TO | STA. | VAR. | 2012-074BP | COOK | 27 | 7 |
| \$MODELNAME\$ | PLOT SCALE = 100.0000' / in. | CHECKED - | REVISED - | | | | | | | | | | CONTRACT NO. 60V84 | | | |
| | PLOT DATE = 11/9/2012 | DATE - | REVISED - | | | | | | | | | | ILLINOIS NON - FED. AID PROJECT | | | |

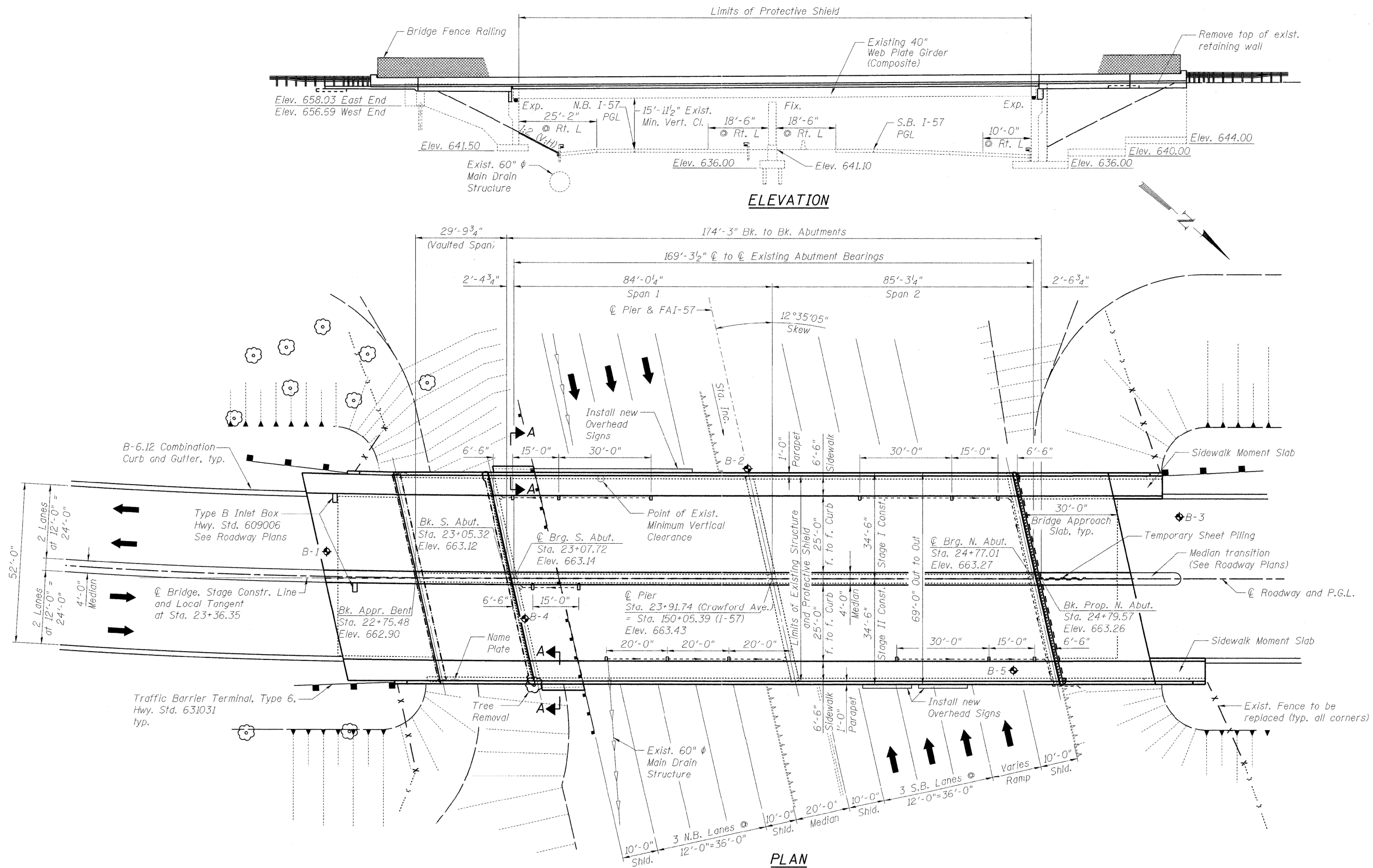
LOCATION #5 - F.A.P. ROUTE 348:
 IL 43 (HARLEM AVE.)
 OVER STONY CREEK
 SN 016-0322
 VILLAGE OF WORTH



TRAFFIC DATA
 LOC. 5:
 IL 43 (HARLEM AVE.)
 ADT (2009) = 37,100
 POSTED SPEED LIMIT = 40 MPH

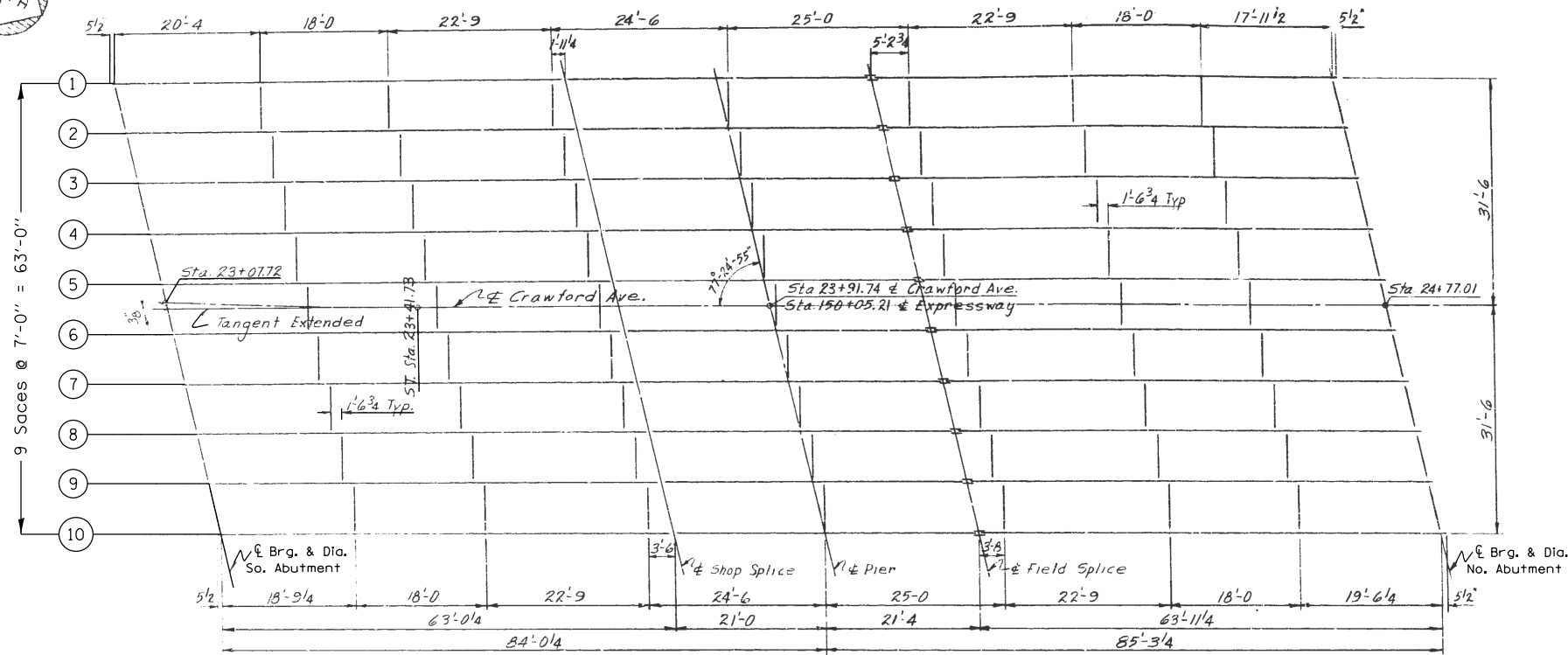
PALOS & WORTH TOWNSHIP

| | | | | | | | | | | | | | | |
|--|-----------------------|------------|-----------|---|-------------------------------|-------|----|--------|-----------|---------|--------|--------------------|-----------|---|
| FILE NAME = | USER NAME = r10sfj | DESIGNED - | REVISED - | STATE OF ILLINOIS DEPARTMENT OF TRANSPORTATION | LOCATION MAP LOC 5 | | | | F.A. RTE. | SECTION | COUNTY | TOTAL SHEETS | SHEET NO. | |
| ci:\pw_work\p1dot\rosfj\0319439\0108613\sheet-plan.dgn | | DRAWN - | REVISED - | | SCALE: | SHEET | OF | SHEETS | STA. | TO | STA. | ILLINOIS | 27 | 8 |
| \$MODELNAME\$ | | CHECKED - | REVISED - | | | | | | | | | COOK | | |
| | PLOT DATE = 11/9/2012 | DATE - | REVISED - | | | | | | | | | CONTRACT NO. 60V84 | | |

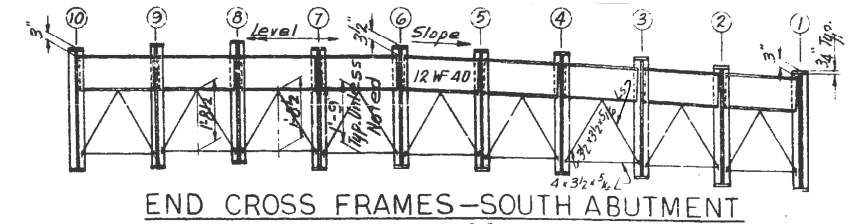


FOR INFORMATION ONLY

| | | | | | | | | | | | |
|---|------------------------------|------------|-----------|---|---------------------------------|--|--------------------|---------|-------------|--------------|-----------|
| FILE NAME = | USER NAME = riosfj | DESIGNED - | REVISED - | STATE OF ILLINOIS DEPARTMENT OF TRANSPORTATION | LOCATION 1 (SN 016-1015) | | F.A. RTE. | SECTION | COUNTY | TOTAL SHEETS | SHEET NO. |
| et:\pw\work\p\dot\riosfj\d0319439\0108613-shft-plan.dgn | DRAWN - | REVISED - | VAR. | | | | 2012-074BP | COOK | 27 | 9 | |
| #MODELNAME# | PLOT SCALE = 100.0335' / in. | CHECKED - | REVISED - | | | | CONTRACT NO. 60V84 | | | | |
| | PLOT DATE = 11/9/2012 | DATE - | REVISED - | | | | SCALE: | SHEET 1 | OF 4 SHEETS | STA. | TO STA. |

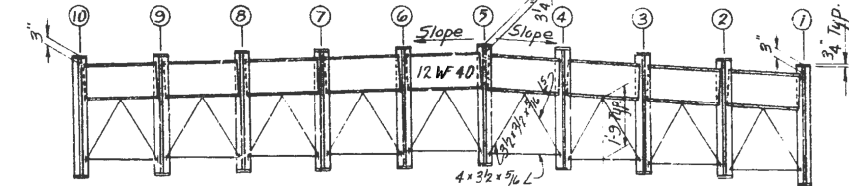


FRAMING PLAN
Scale: 3/32" = 1'-0"



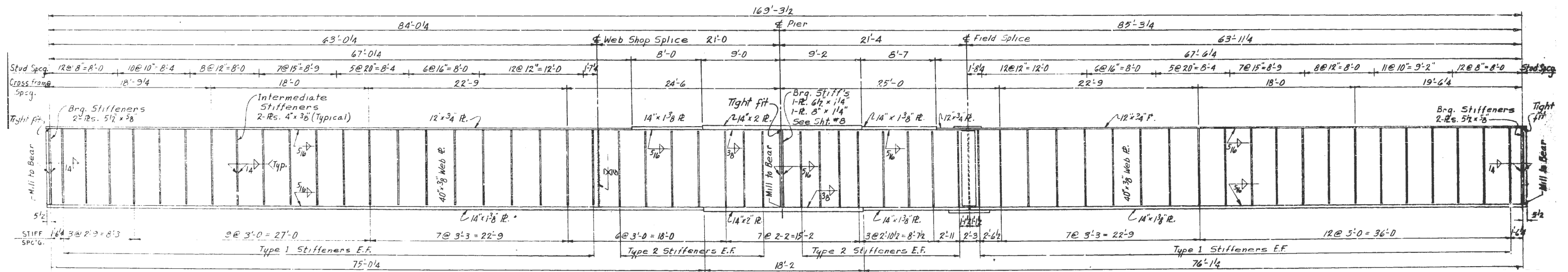
END CROSS FRAMES - SOUTH ABUTMENT

Vert. Scale: 3/8" = 1'-0"
Hor. Scale: 1/8" = 1'-0"



END CROSS FRAMES - NORTH ABUTMENT

Vert. Scale: 3/8" = 1'-0"
Hor. Scale: 1/8" = 1'-0"



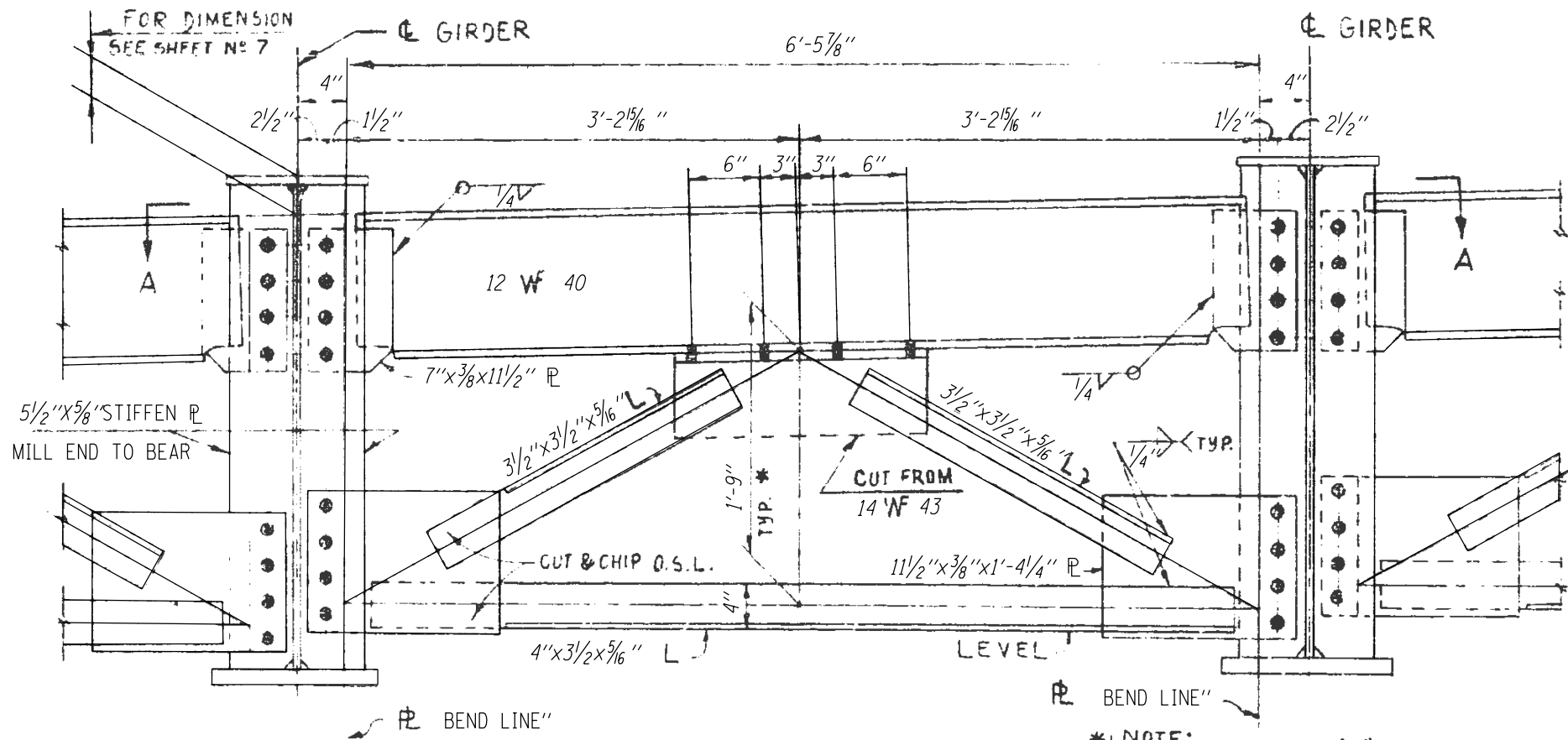
| | | | |
|---|------------------------------|------------|-----------|
| FILE NAME = | USER NAME = riosfj | DESIGNED - | REVISED - |
| et:\pw\work\p1dot\riosfj\d0319439\0108613\shft-plan.dgn | | DRAWN - | REVISED - |
| | PLOT SCALE = 100.0000' / in. | CHECKED - | REVISED - |
| *MODELNAME* | PLOT DATE = 11/9/2012 | DATE - | REVISED - |

STATE OF ILLINOIS
DEPARTMENT OF TRANSPORTATION

LOCATION 1 (SN 016-1015)

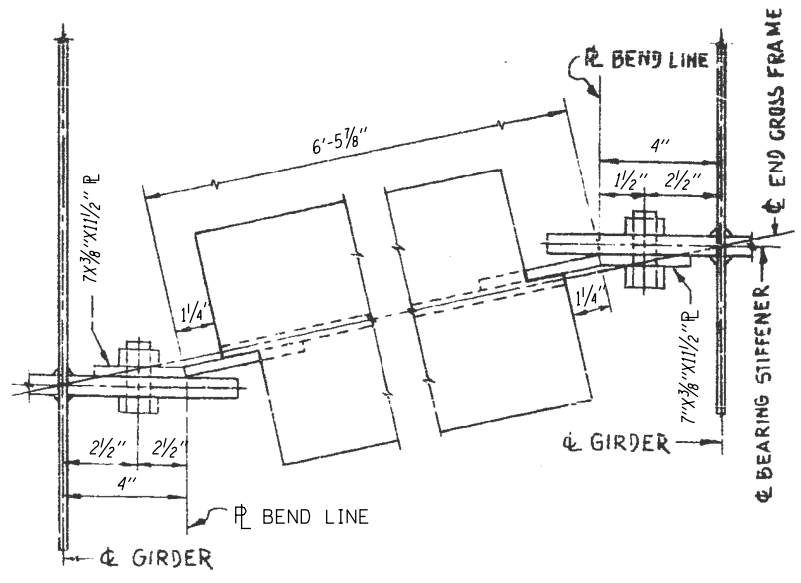
SCALE: SHEET 2 OF 4 SHEETS STA. TO STA.

| | | | | |
|--------------|------------|--------|---------------------------------|-----------|
| F.A. RTE. | SECTION | COUNTY | TOTAL SHEETS | SHEET NO. |
| VAR. | 2012-074BP | COOK | 27 | 10 |
| CONTRACT NO. | | | ILLINOIS NON - FED. AID PROJECT | |



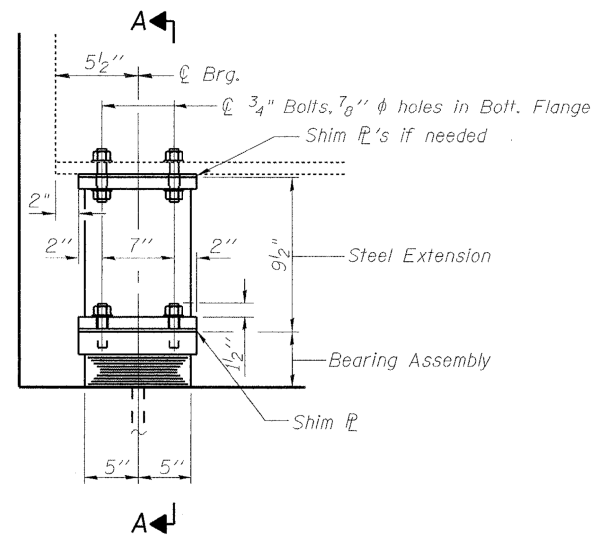
* NOTE: DIMENSION 1'-9" TYPICAL EXCEPT FOR FRAMES ON BOTH SIDES OF GIRDER NO 8 AT SOUTH ABUTMENT FOR LAY-OUT SEE SHEET NO 7.

END CROSS FRAME

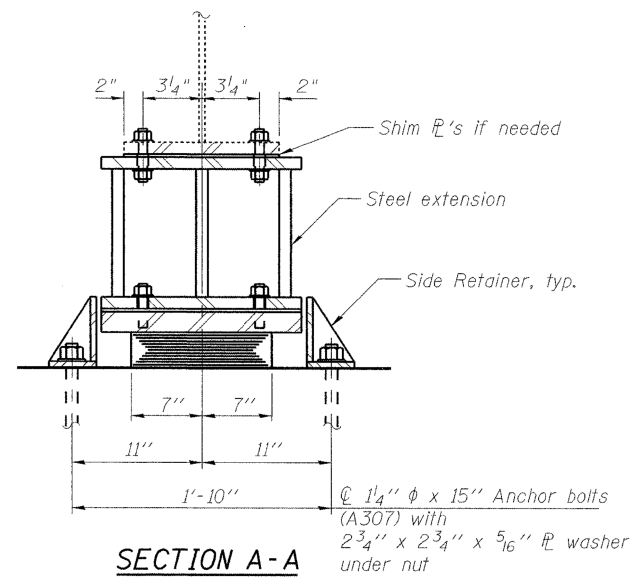


SECTION A-A

| | | | | | | | | | | | | | | | |
|--|-----------------------|------------|-----------|---|---------------------------------|---------|------|-----------|---------|---------|--------------|------------|------|----|----|
| FILE NAME = | USER NAME = r1osfj | DESIGNED - | REVISED - | STATE OF ILLINOIS DEPARTMENT OF TRANSPORTATION | LOCATION 1 (SN 016-1015) | | | F.A. RTE. | SECTION | COUNTY | TOTAL SHEETS | SHEET NO. | | | |
| ct:\pw\work\p1dot\rosfj\d0319439\0108613\shht-plan.dgn | | DRAWN - | REVISED - | | SCALE: | SHEET 3 | OF 4 | SHEETS | STA. | TO STA. | VAR. | 2012-074BP | COOK | 27 | 11 |
| *MODELNAME* | PLOT DATE = 11/9/2012 | CHECKED - | REVISED - | | CONTRACT NO. 60V84 | | | | | | | | | | |
| | | DATE - | REVISED - | | ILLINOIS NON - FED. AID PROJECT | | | | | | | | | | |

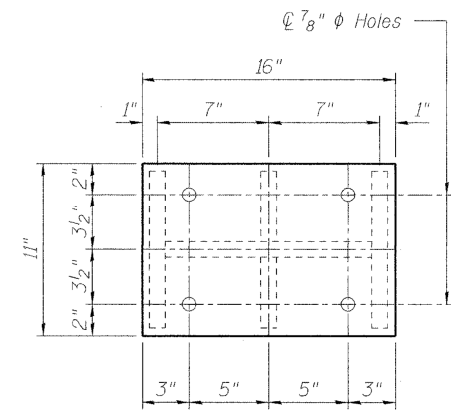


ELEVATION AT ABUT.

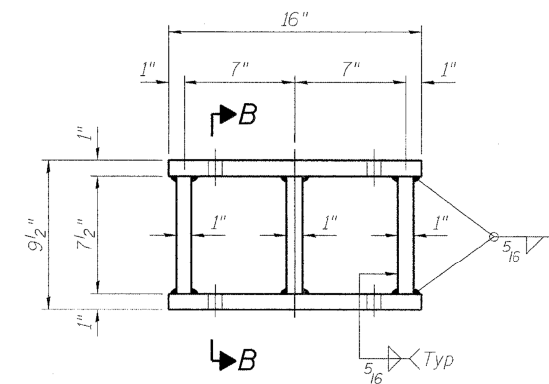


SECTION A-A

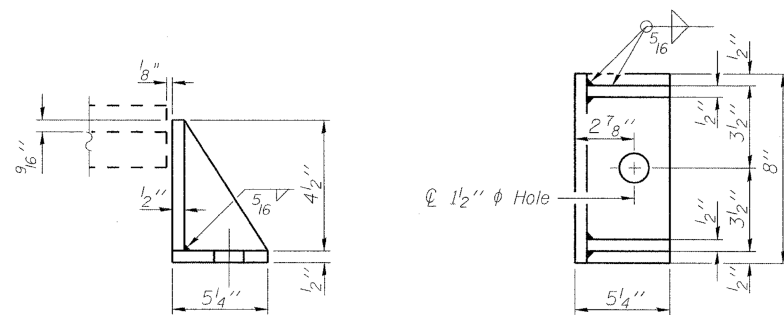
TYPE I ELASTOMERIC EXP. BRG.



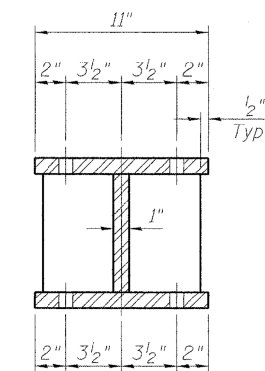
PLAN TOP AND BOTTOM PLATE



STEEL EXTENSION DETAIL

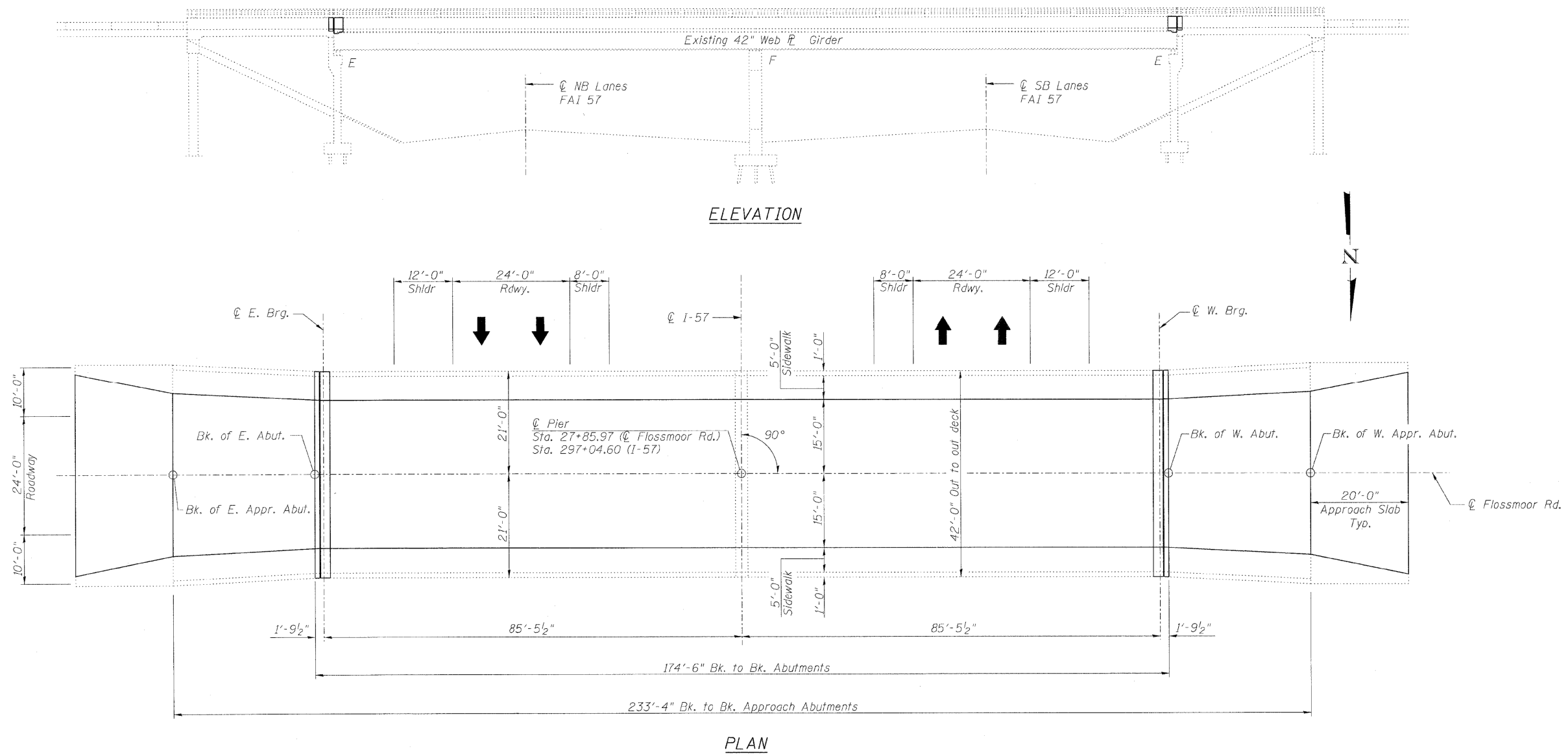


SIDE RETAINER



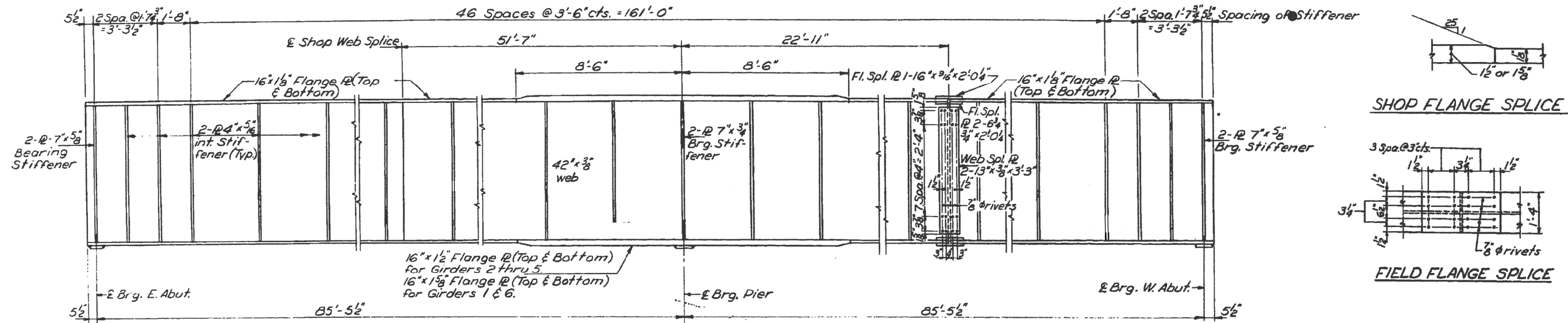
SECTION B-B

| | | | | | | | | | | | | |
|---|------------------------------|------------|-----------|---|---|--|--|--------------------|------------|--------|--------------|-----------|
| FILE NAME = | USER NAME = r1osfj | DESIGNED - | REVISED - | STATE OF ILLINOIS DEPARTMENT OF TRANSPORTATION | LOCATION 1 (SN 016-1015) | | | F.A. RTE. | SECTION | COUNTY | TOTAL SHEETS | SHEET NO. |
| et:\pw\work\p1dot\r1osfj\d0319439\0108613\shht-plan.dgn | | DRAWN - | REVISED - | | | | | VAR. | 2012-074BP | COOK | 27 | 12 |
| \$MODELNAME\$ | PLOT SCALE = 100.0000' / in. | CHECKED - | REVISED - | | SCALE: SHEET 4 OF 4 SHEETS STA. TO STA. | | | CONTRACT NO. 60V84 | | | | |
| | PLOT DATE = 11/9/2012 | DATE - | REVISED - | | ILLINOIS NON - FED. AID PROJECT | | | | | | | |

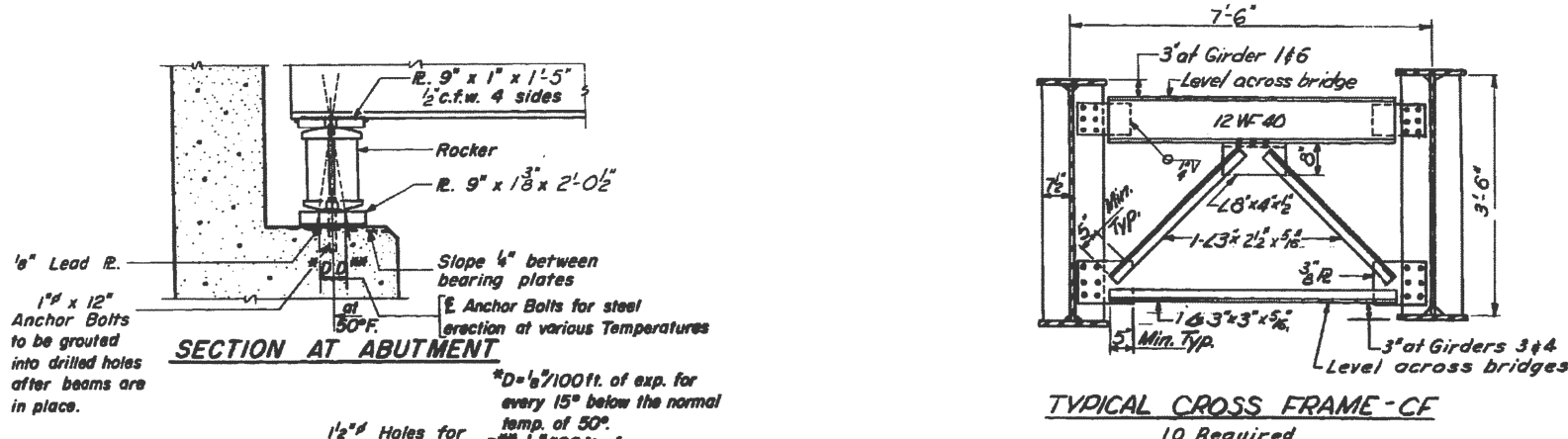
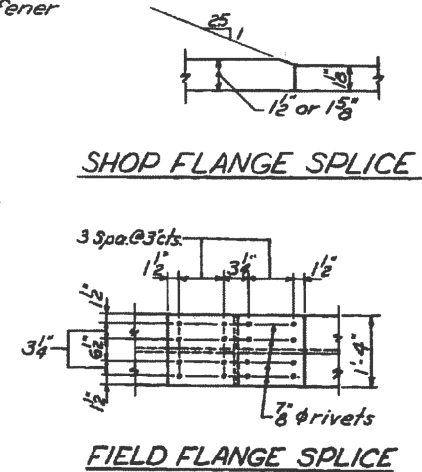


FOR INFORMATION ONLY

| | | | | | | | | | | | | | |
|---|------------------------------|------------|-----------|---|---------------------------------|---------------------------------|---------|-----------|------------|--------|--------------|--------------------|--|
| FILE NAME = | USER NAME = r1osfj | DESIGNED - | REVISED - | STATE OF ILLINOIS DEPARTMENT OF TRANSPORTATION | LOCATION 2 (SN 016-1099) | | | F.A. RTE. | SECTION | COUNTY | TOTAL SHEETS | SHEET NO. | |
| ei:\pwork\work\p1dot\rosfj\d0319439\0108613\shht-plan.dgn | | DRAWN - | REVISED - | | | | | VAR. | 2012-074BP | COOK | 27 | 13 | |
| *MODELNAME* | PLOT SCALE = 100.0000' / in. | CHECKED - | REVISED - | | | SCALE: | SHEET 1 | OF 3 | SHEETS | STA. | TO STA. | CONTRACT NO. 60V84 | |
| | PLOT DATE = 11/9/2012 | DATE - | REVISED - | | | ILLINOIS NON - FED. AID PROJECT | | | | | | | |

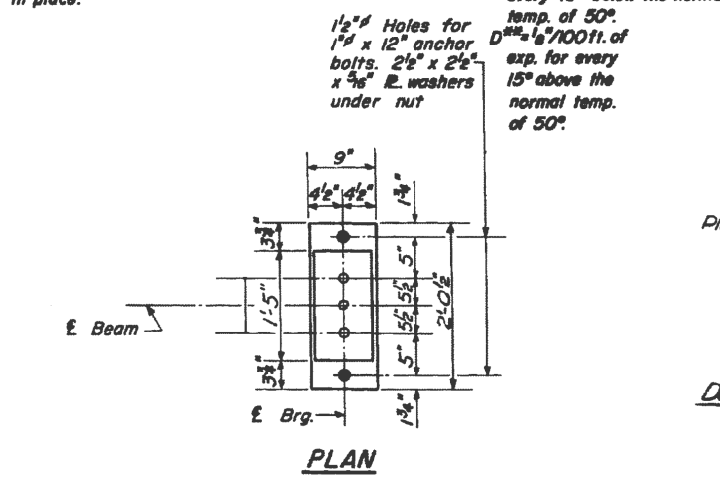


ELEVATION

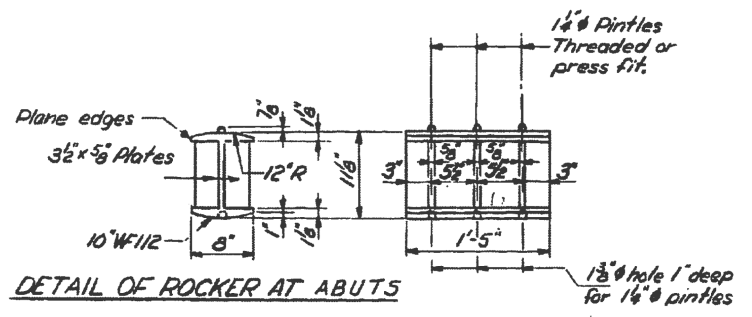


SECTION AT ABUTMENT

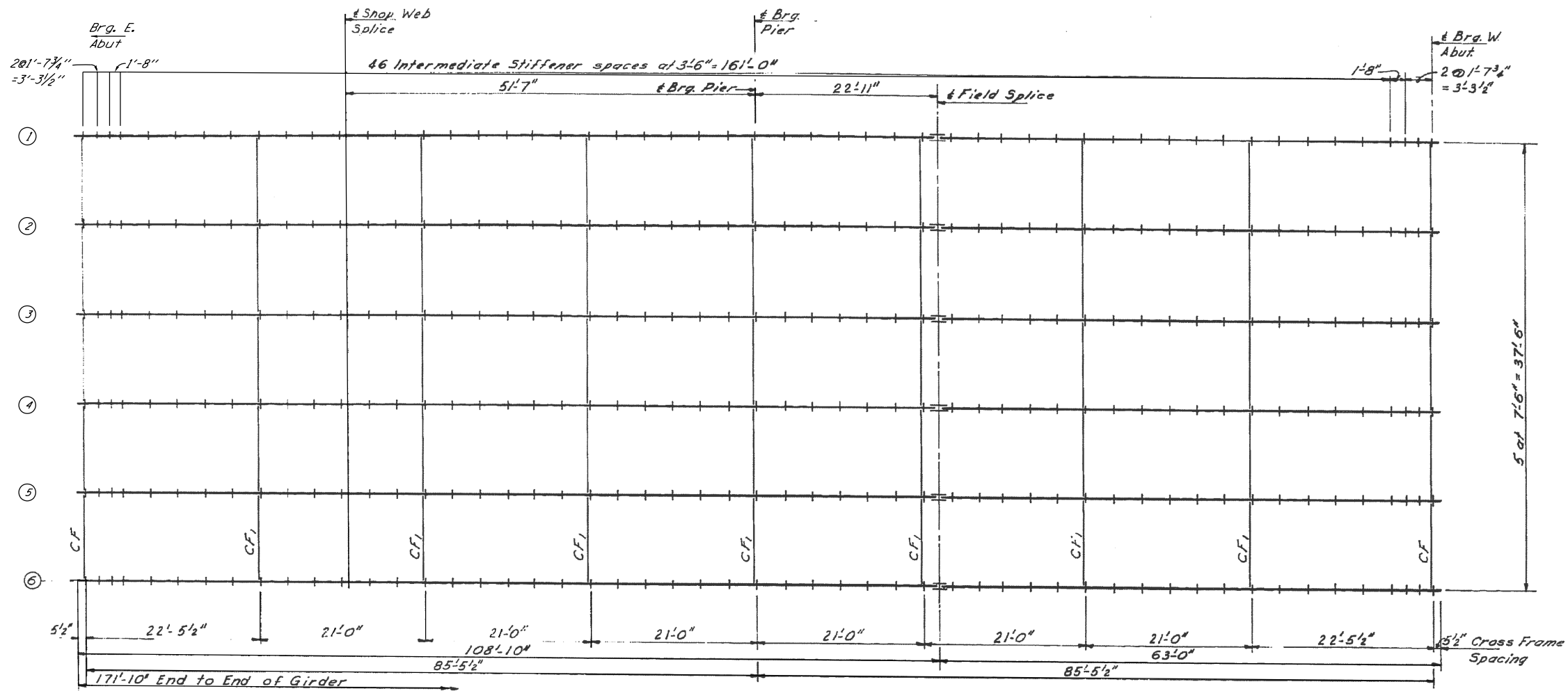
TYPICAL CROSS FRAME - CF
10 Required



PLAN

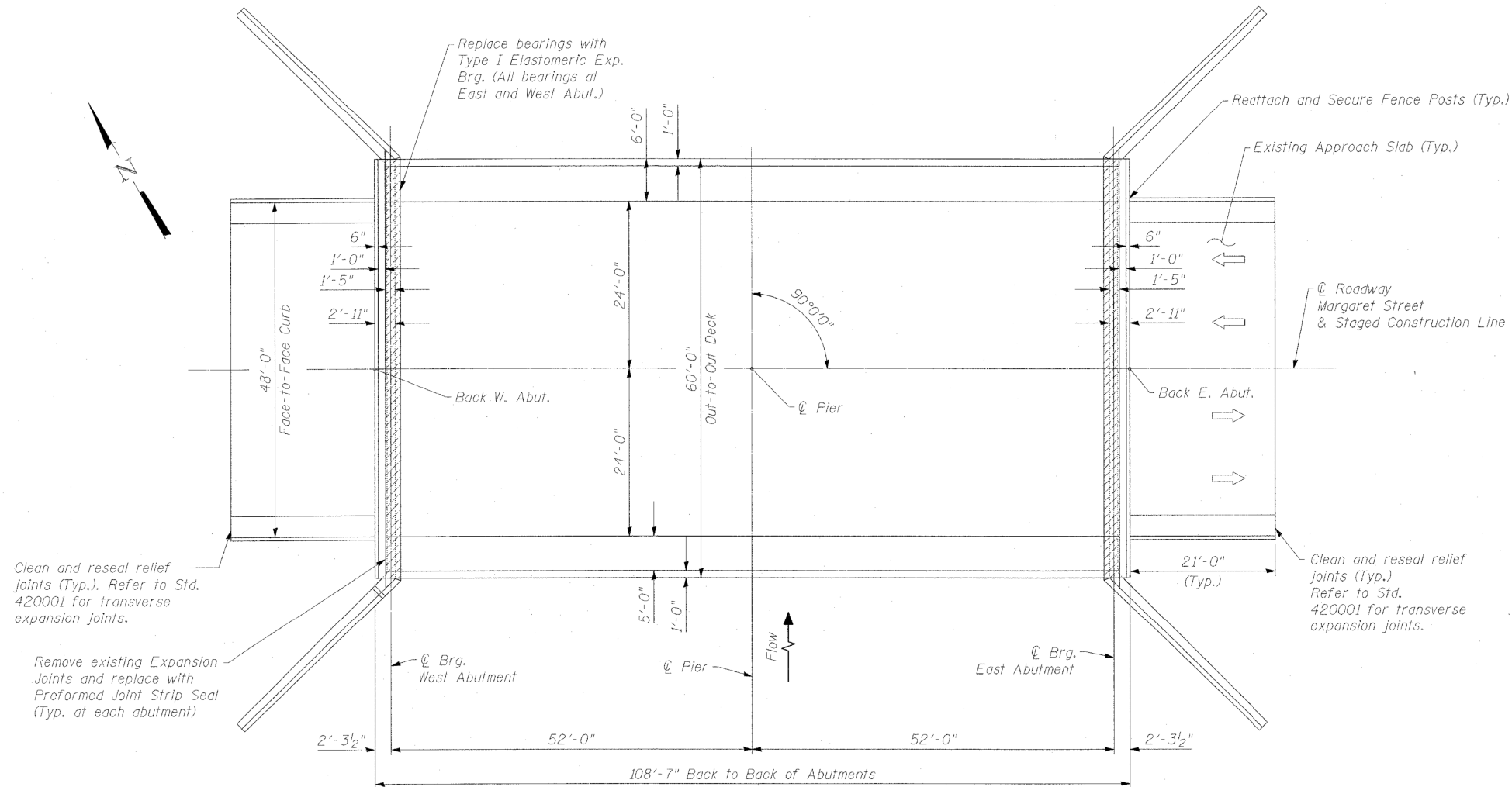


DETAIL OF ROCKER AT ABUTS

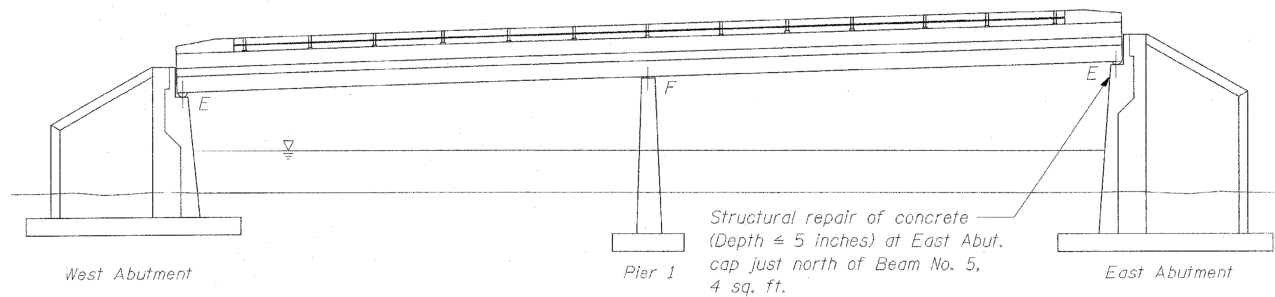


PLAN

| | | | | | | | | | | | | |
|--|------------------------------|------------|-----------|---|---------------------------------|---------|------|---------------------------------|---------|---------|--------------|-----------|
| FILE NAME = | USER NAME = r1osfj | DESIGNED - | REVISED - | STATE OF ILLINOIS DEPARTMENT OF TRANSPORTATION | LOCATION 2 (SN 016-1099) | | | F.A. RTE. | SECTION | COUNTY | TOTAL SHEETS | SHEET NO. |
| c:\pwwork\p1dot\r1osfj\d0319439\0108613\sheet-plan.dgn | DRAWN - | REVISED - | VAR. | | | | | 2012-074BP | COOK | 27 | 15 | |
| *MODELNAME* | PLOT SCALE = 100.0000' / in. | CHECKED - | REVISED - | | CONTRACT NO. 60V84 | | | ILLINOIS NON - FED. AID PROJECT | | | | |
| | PLOT DATE = 11/9/2012 | DATE - | REVISED - | | SCALE: | SHEET 3 | OF 3 | SHEETS | STA. | TO STA. | | |



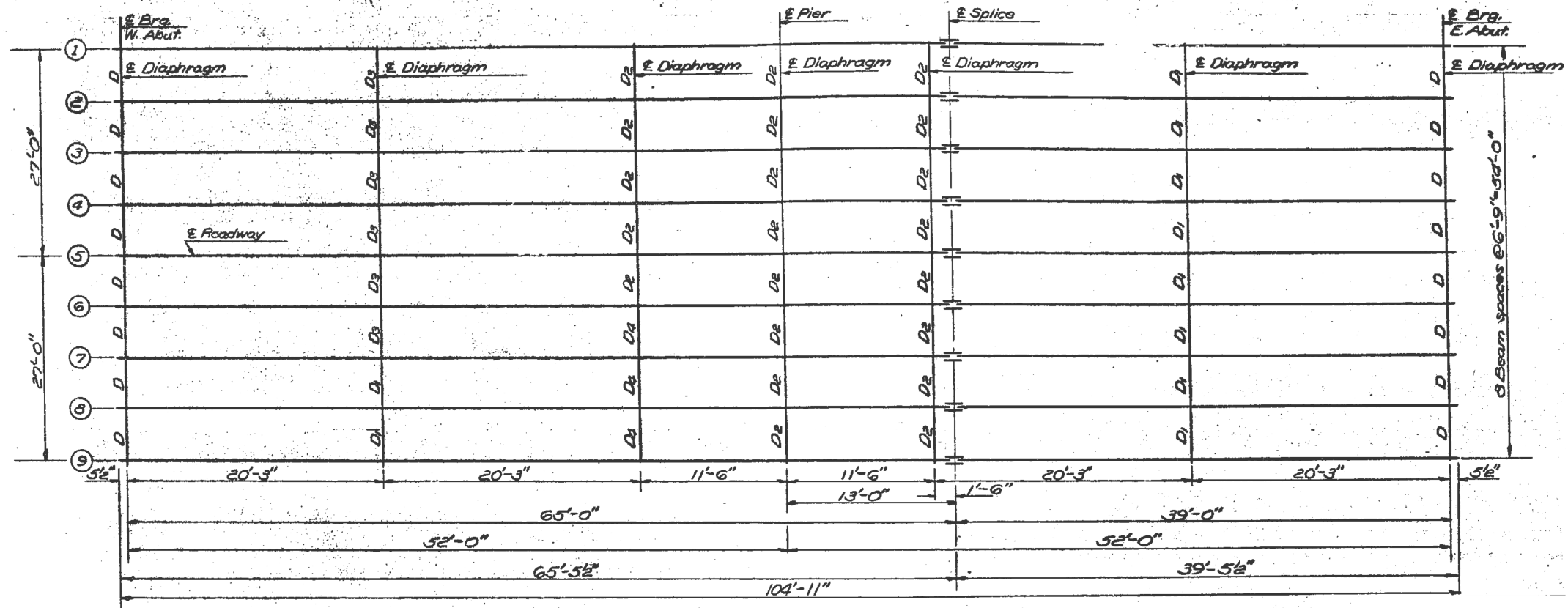
PLAN



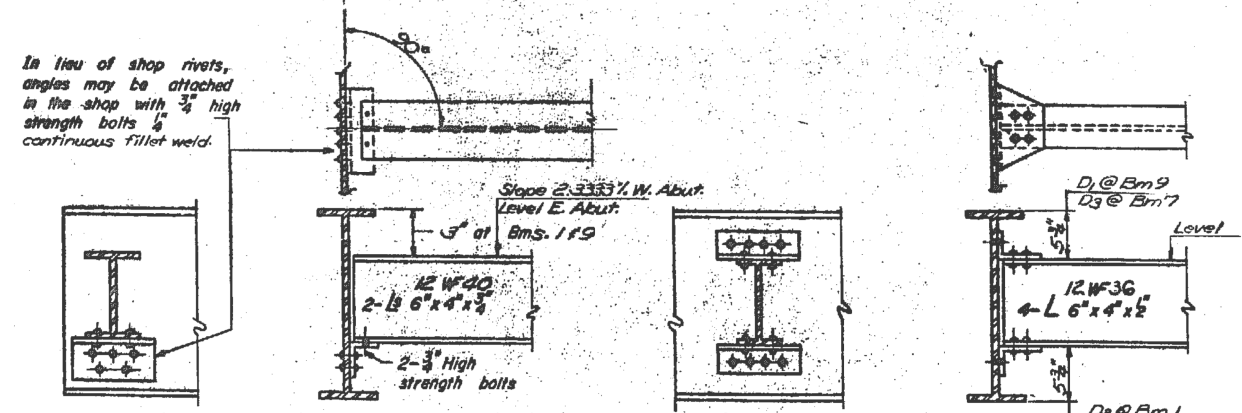
ELEVATION

FOR INFORMATION ONLY

| | | | | | | | | | | | | |
|--|------------------------------|------------|-----------|---|---|--|--|--------------------|---------|--------|--------------|-----------|
| FILE NAME = | USER NAME = r1osfj | DESIGNED - | REVISED - | STATE OF ILLINOIS DEPARTMENT OF TRANSPORTATION | LOCATION 3 (SN 016-0573) | | | F.A. RTE. | SECTION | COUNTY | TOTAL SHEETS | SHEET NO. |
| ct:\pw\work\p1dot\r1osfj\d0319439\0108613\sheet-plan.dgn | DRAWN - | REVISED - | VAR. | | | | | 2012-074BP | COOK | 27 | 16 | |
| \$MODELNAME\$ | PLOT SCALE = 100.0000' / in. | CHECKED - | REVISED - | | SCALE: SHEET 1 OF 3 SHEETS STA. TO STA. | | | CONTRACT NO. 60VB4 | | | | |
| | PLOT DATE = 11/9/2012 | DATE - | REVISED - | | ILLINOIS NON - FED. AID PROJECT | | | | | | | |



FRAMING PLAN
(All Beams 30 WF132)

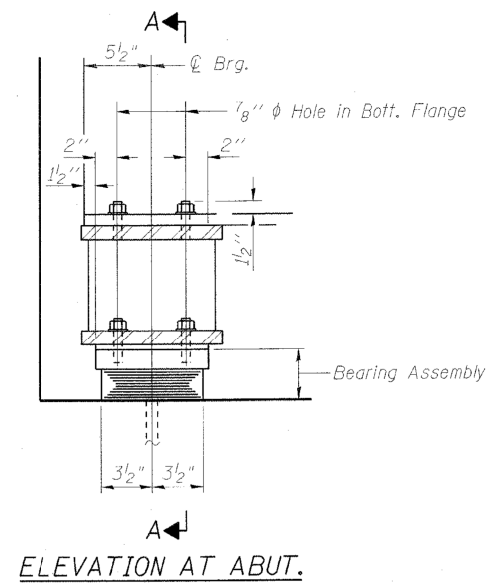


DIAPHRAGM D
16 Required

DIAPHRAGMS D1 THRU D8

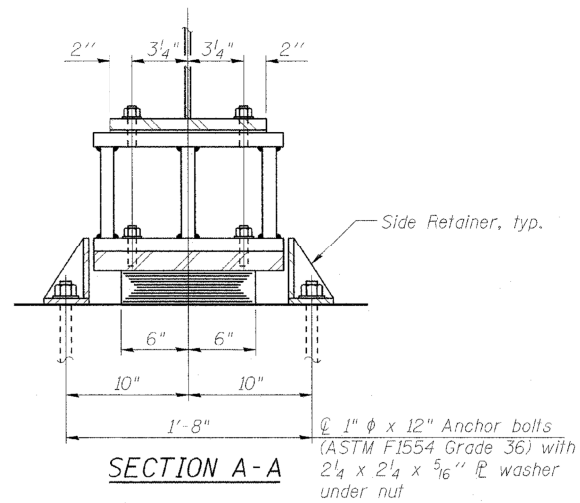
- D1 Required - 10
- D2 Required - 21
- D3 Required - 6
- D8 Required - 3

| | | | | | | | | | | | | |
|--|------------------------------|------------|-----------|---|---------------------------------|--|--|--------------------|------------|--------|---------------------------------|-----------|
| FILE NAME = | USER NAME = r1osfj | DESIGNED - | REVISED - | STATE OF ILLINOIS DEPARTMENT OF TRANSPORTATION | LOCATION 3 (SN 016-0573) | | | F.A. RTE. | SECTION | COUNTY | TOTAL SHEETS | SHEET NO. |
| et:\pw\work\p1dot\rosfj\d0319439\0108613\shht-plan.dgn | | DRAWN - | REVISED - | | | | | VAR. | 2012-074BP | COOK | 27 | 17 |
| \$MODELNAME\$ | PLOT SCALE = 100.0000' / in. | CHECKED - | REVISED - | | | | | CONTRACT NO. 60V84 | | | ILLINOIS NON - FED. AID PROJECT | |
| | PLOT DATE = 11/9/2012 | DATE - | REVISED - | | | | | SCALE: | SHEET 2 | OF 3 | SHEETS | STA. |

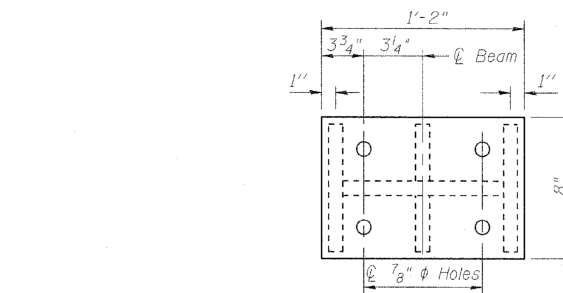


ELEVATION AT ABUT.

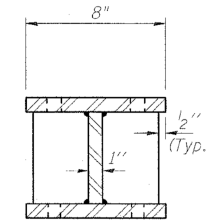
TYPE I ELASTOMERIC EXP. BRG.



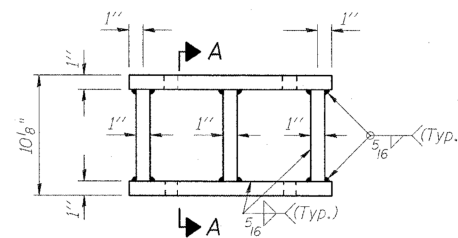
SECTION A-A



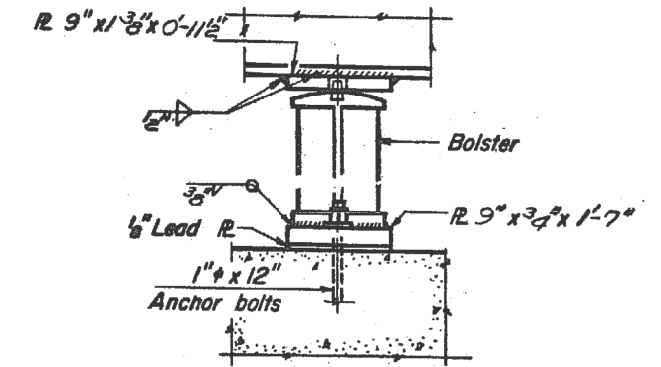
PLAN STEEL EXTENSION



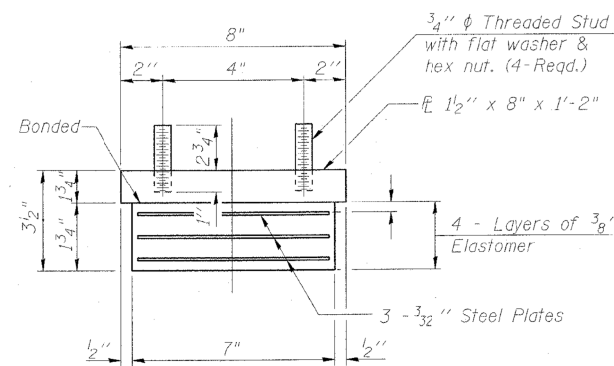
SECTION A-A



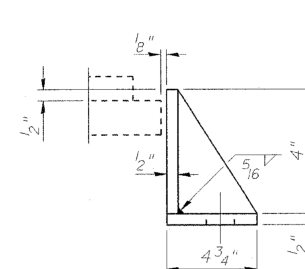
ELEVATION STEEL EXTENSION



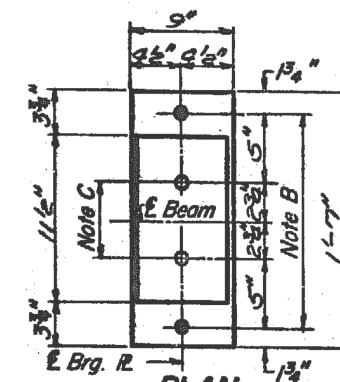
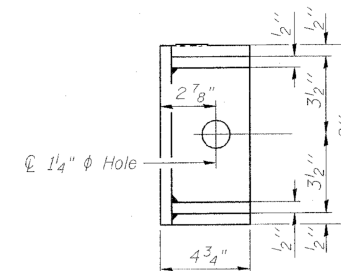
ELEVATION



BEARING ASSEMBLY



SIDE RETAINER



PLAN

AT PIER

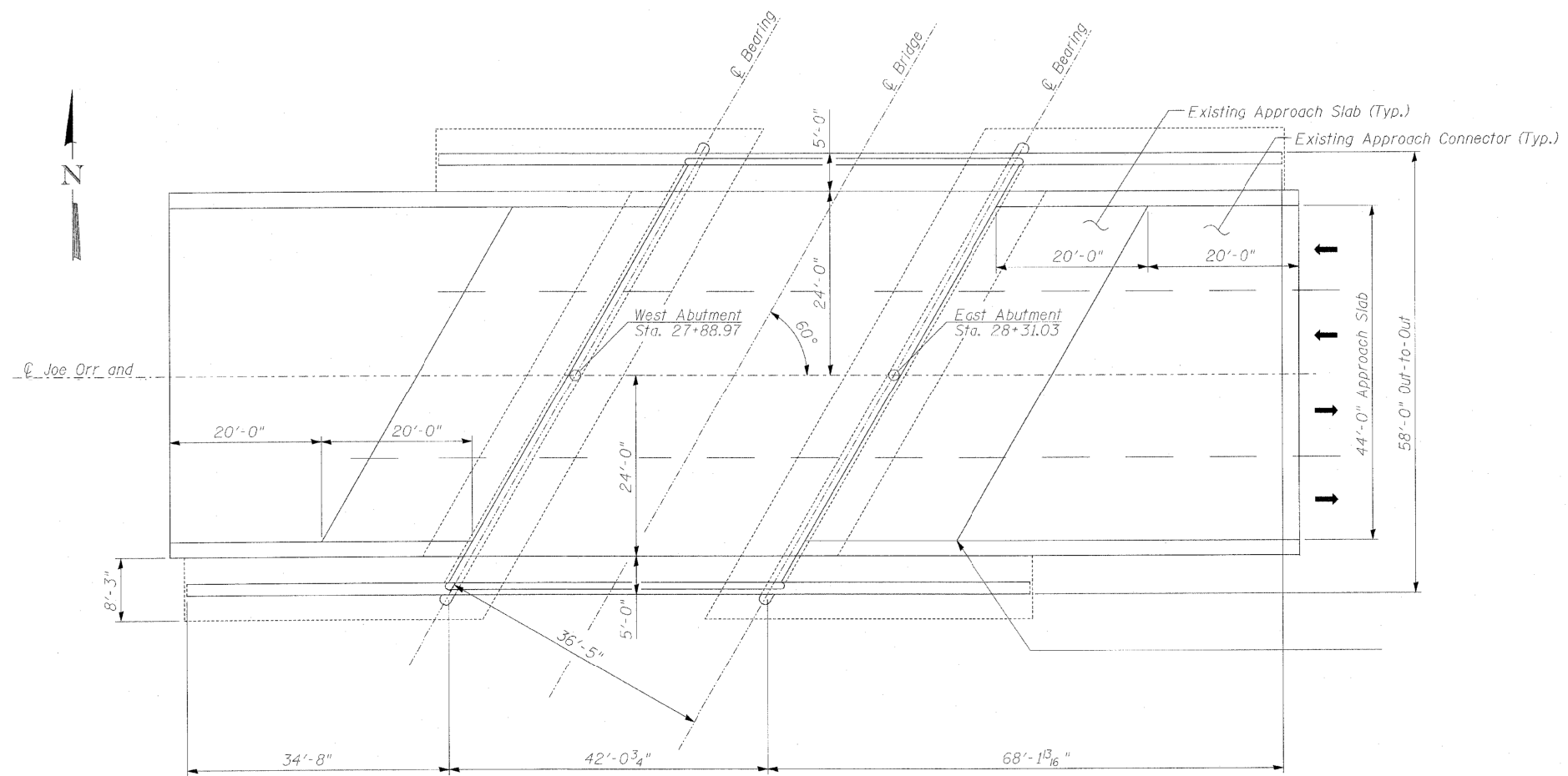
| | | | |
|--|------------------------------|------------|-----------|
| FILE NAME = | USER NAME = r1osfj | DESIGNED - | REVISED - |
| ei:\pw\work\p1dot\r1osfj\d0319439\0108613\sheet-plan.dgn | | DRAWN - | REVISED - |
| | PLOT SCALE = 100.0000' / in. | CHECKED - | REVISED - |
| \$MODELNAME\$ | PLOT DATE = 11/9/2012 | DATE - | REVISED - |

STATE OF ILLINOIS
DEPARTMENT OF TRANSPORTATION

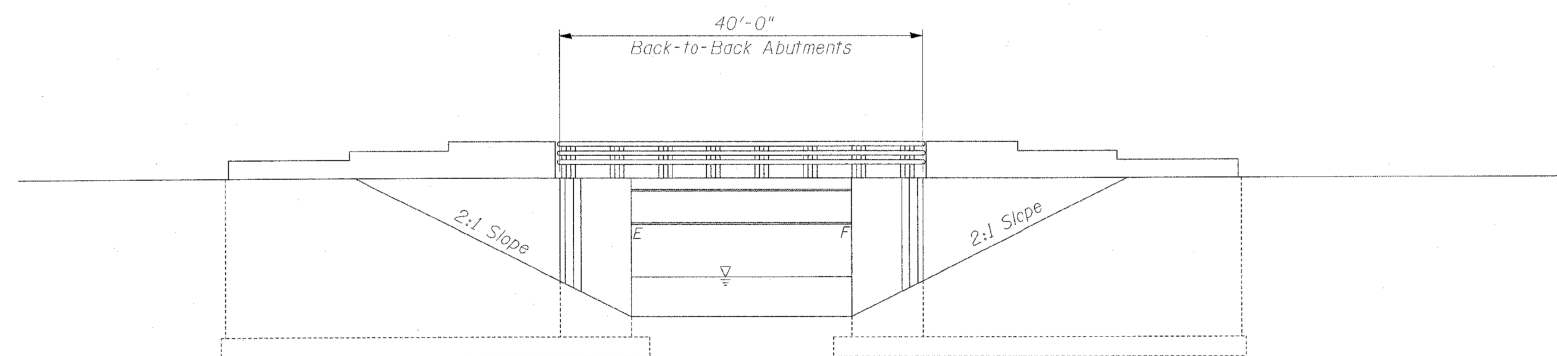
LOCATION 3 (SN 016-0573)

SCALE: SHEET 3 OF 3 SHEETS STA. TO STA.

| | | | | |
|---------------------------|------------|--------|--------------------|-----------|
| F.A. RTE. | SECTION | COUNTY | TOTAL SHEETS | SHEET NO. |
| VAR. | 2012-074BP | COOK | 27 | 18 |
| | | | CONTRACT NO. 60V84 | |
| ILLINOIS FED. AID PROJECT | | | | |



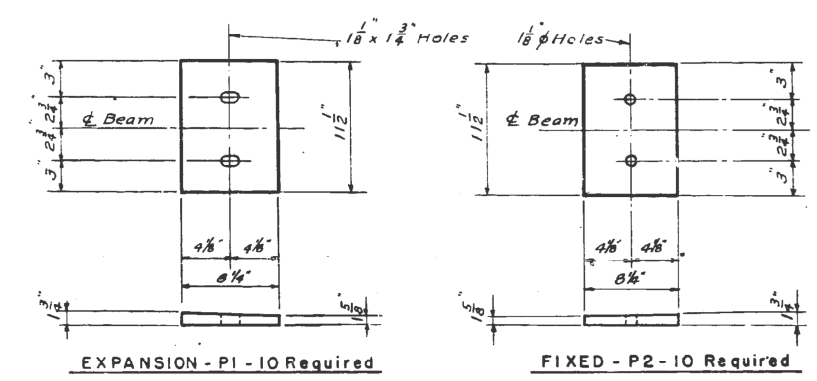
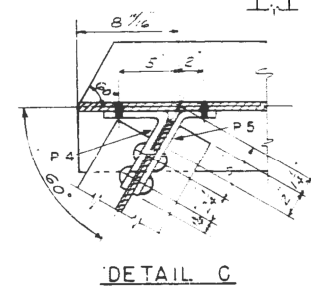
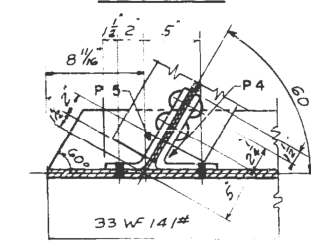
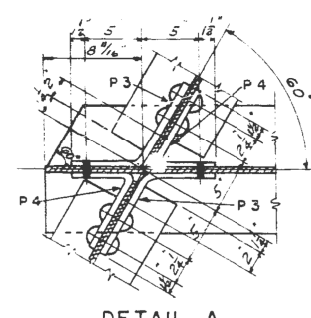
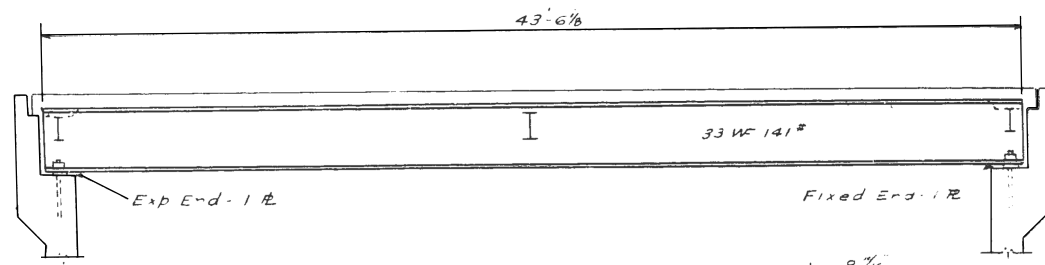
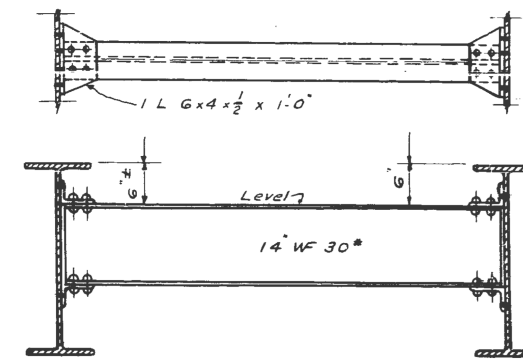
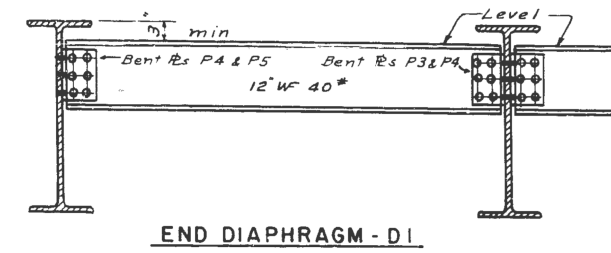
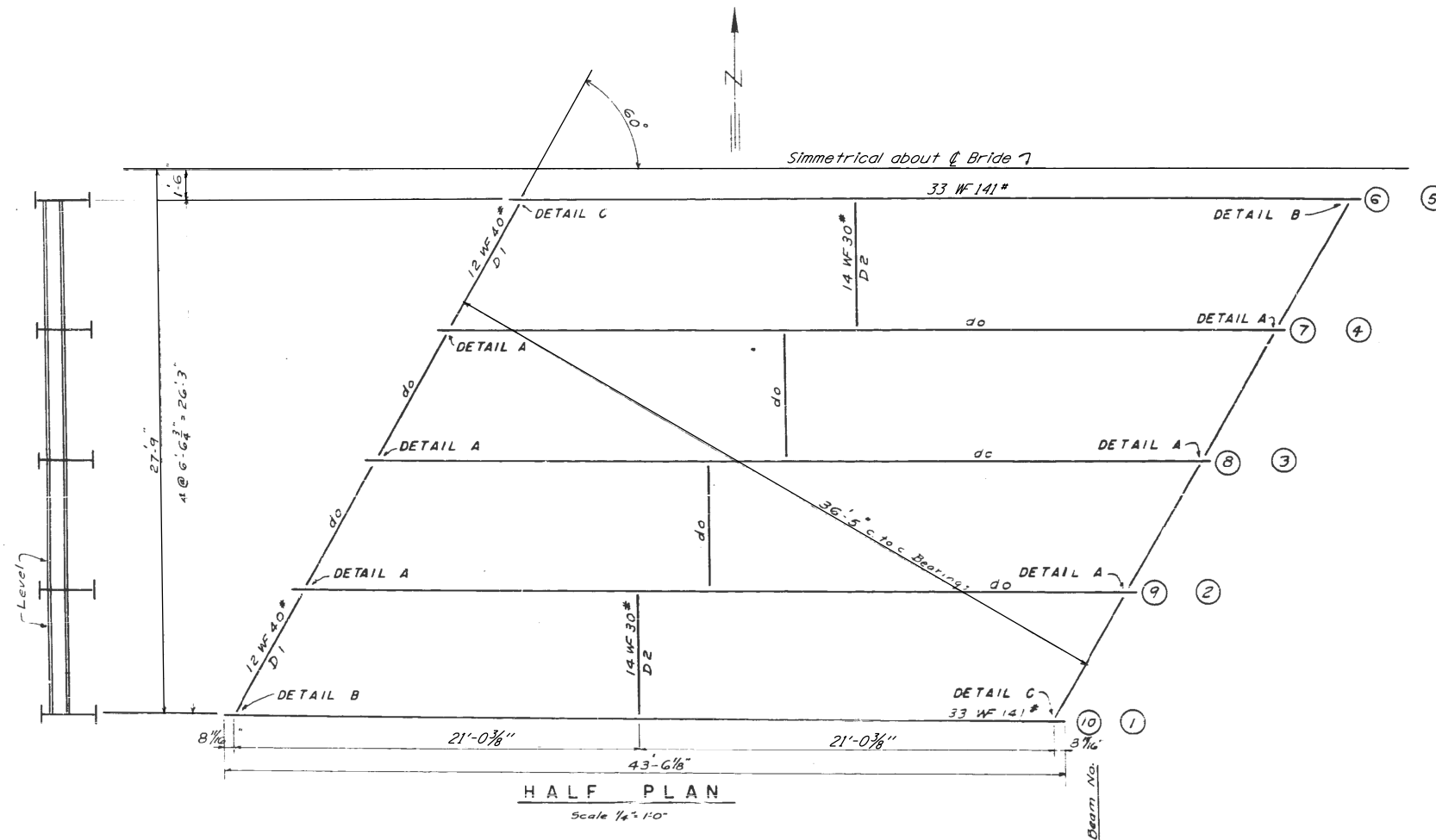
PLAN



ELEVATION

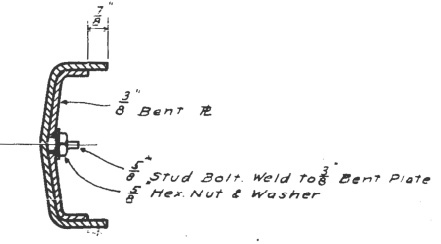
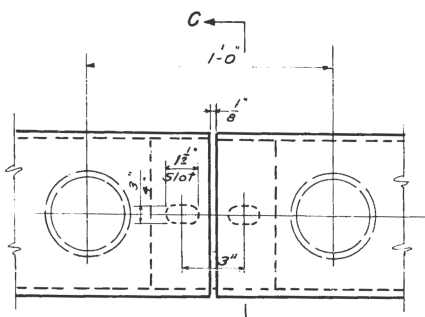
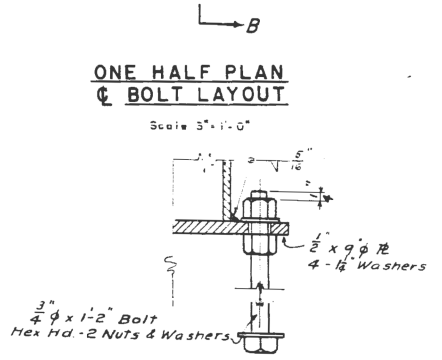
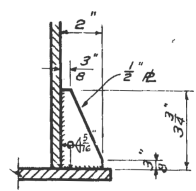
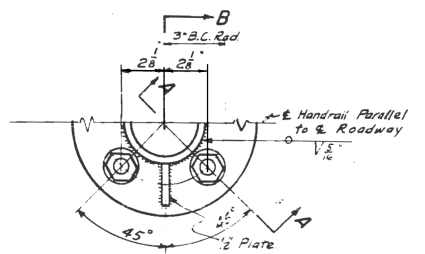
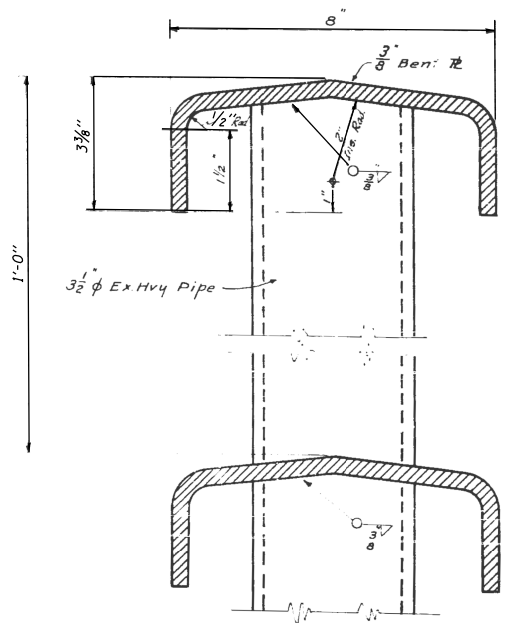
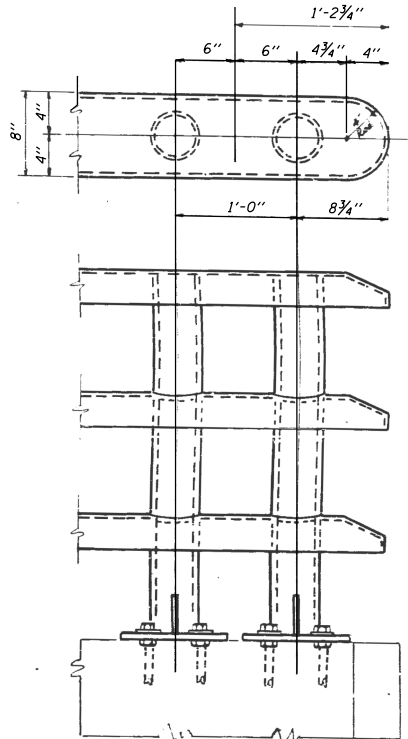
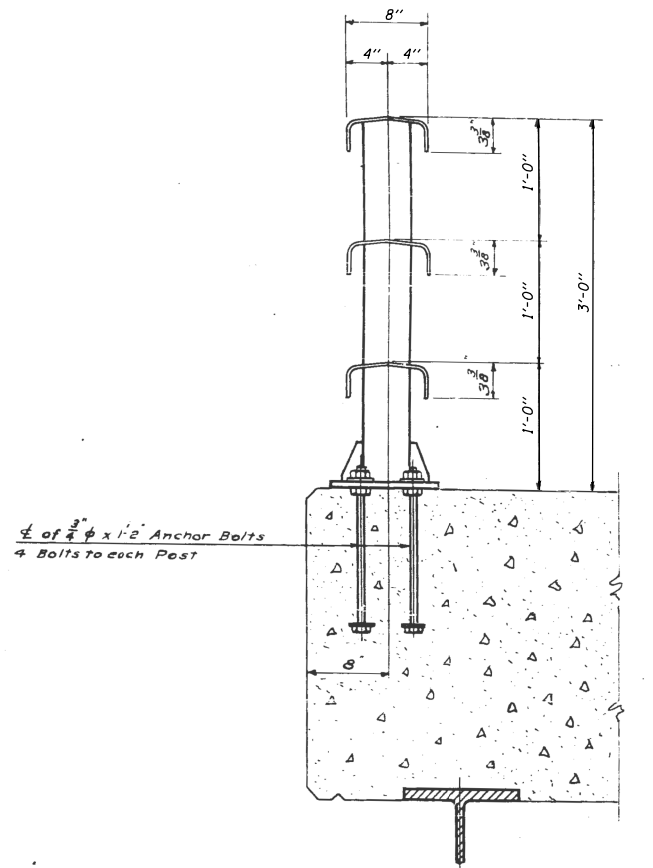
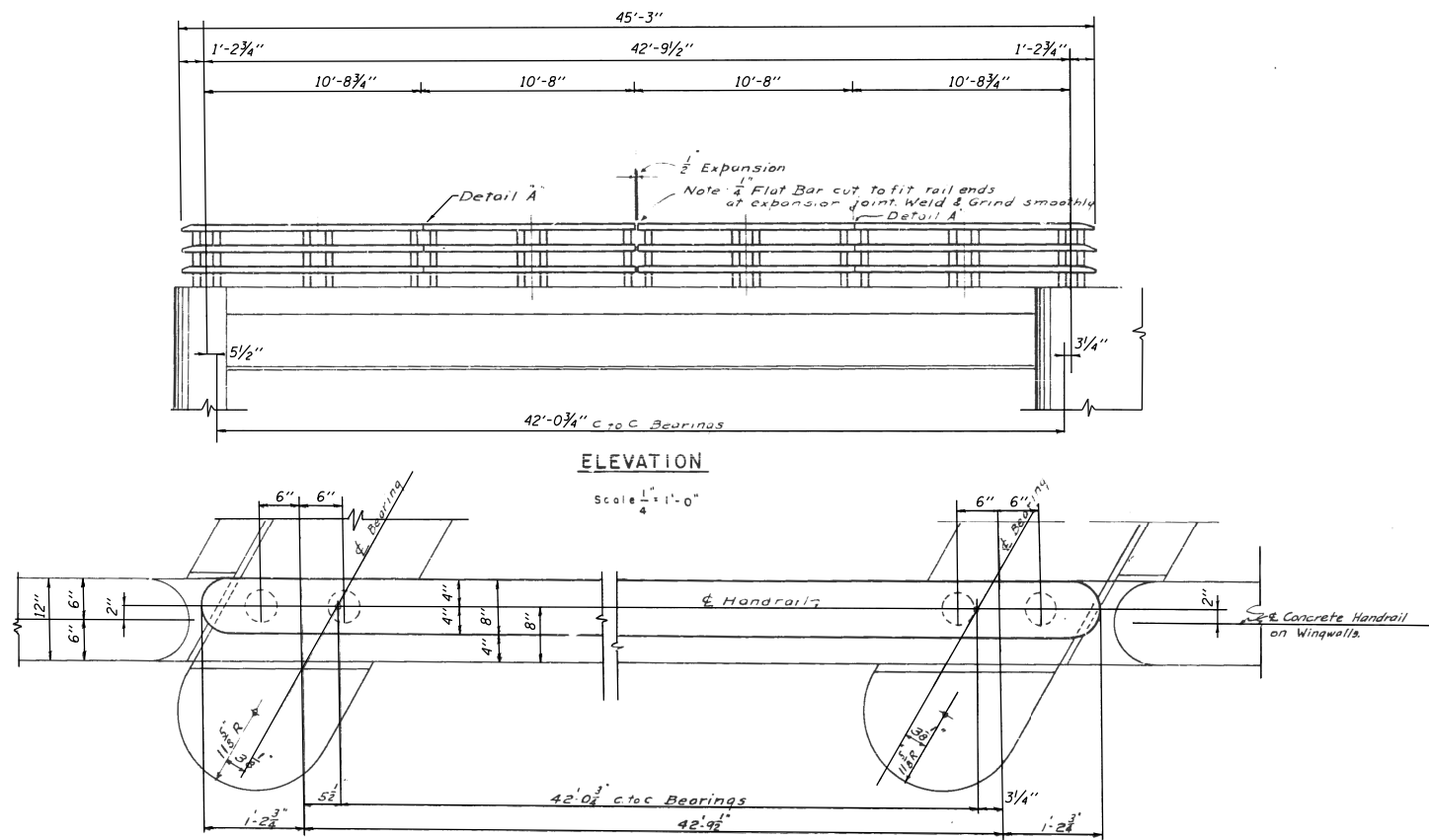
FOR INFORMATION ONLY

| | | | | | | | | | | | | | | | |
|--|------------------------------|------------|-----------|---|---------------------------------|---------|------|--------|-----------|---------|--------|--------------|-----------|----|----|
| FILE NAME = | USER NAME = r1osfj | DESIGNED - | REVISED - | STATE OF ILLINOIS DEPARTMENT OF TRANSPORTATION | LOCATION 4 (SN 016-0919) | | | | F.A. RTE. | SECTION | COUNTY | TOTAL SHEETS | SHEET NO. | | |
| c:\pwwork\p1dot\r1osfj\d0319439\0108613\sheet-plan.dgn | | DRAWN - | REVISED - | | SCALE: | SHEET 1 | OF 2 | SHEETS | STA. | TO STA. | VAR. | 2012-074BP | COOK | 27 | 19 |
| \$MODELNAME\$ | PLOT SCALE = 100.0000' / in. | CHECKED - | REVISED - | | CONTRACT NO. 60V84 | | | | | | | | | | |
| | PLOT DATE = 11/9/2012 | DATE - | REVISED - | | ILLINOIS NON-FED. AID PROJECT | | | | | | | | | | |



Scale for Details A, B & C
1/8" = 1'-0"

| | | | | | | | | | | | | | |
|---|------------------------------|------------|-----------|---|---------------------------------|--|--|---|------------|--------|--------------------|-----------|--|
| FILE NAME = | USER NAME = riosfj | DESIGNED - | REVISED - | STATE OF ILLINOIS DEPARTMENT OF TRANSPORTATION | LOCATION 4 (SN 016-0919) | | | F.A. RTE. | SECTION | COUNTY | TOTAL SHEETS | SHEET NO. | |
| et:\pwork\work\pidot\riosfj\d0319439\0108613\sheet-plan.dgn | | DRAWN - | REVISED - | | | | | VAR. | 2012-074BP | COOK | 27 | 20 | |
| \$MODELNAME\$ | PLOT SCALE = 100.0000' / in. | CHECKED - | REVISED - | | | | | SCALE: SHEET 2 OF 2 SHEETS STA. TO STA. | | | CONTRACT NO. 60V84 | | |
| | PLOT DATE = 11/9/2012 | DATE - | REVISED - | | | | | ILLINOIS NON - FED. AID PROJECT | | | | | |



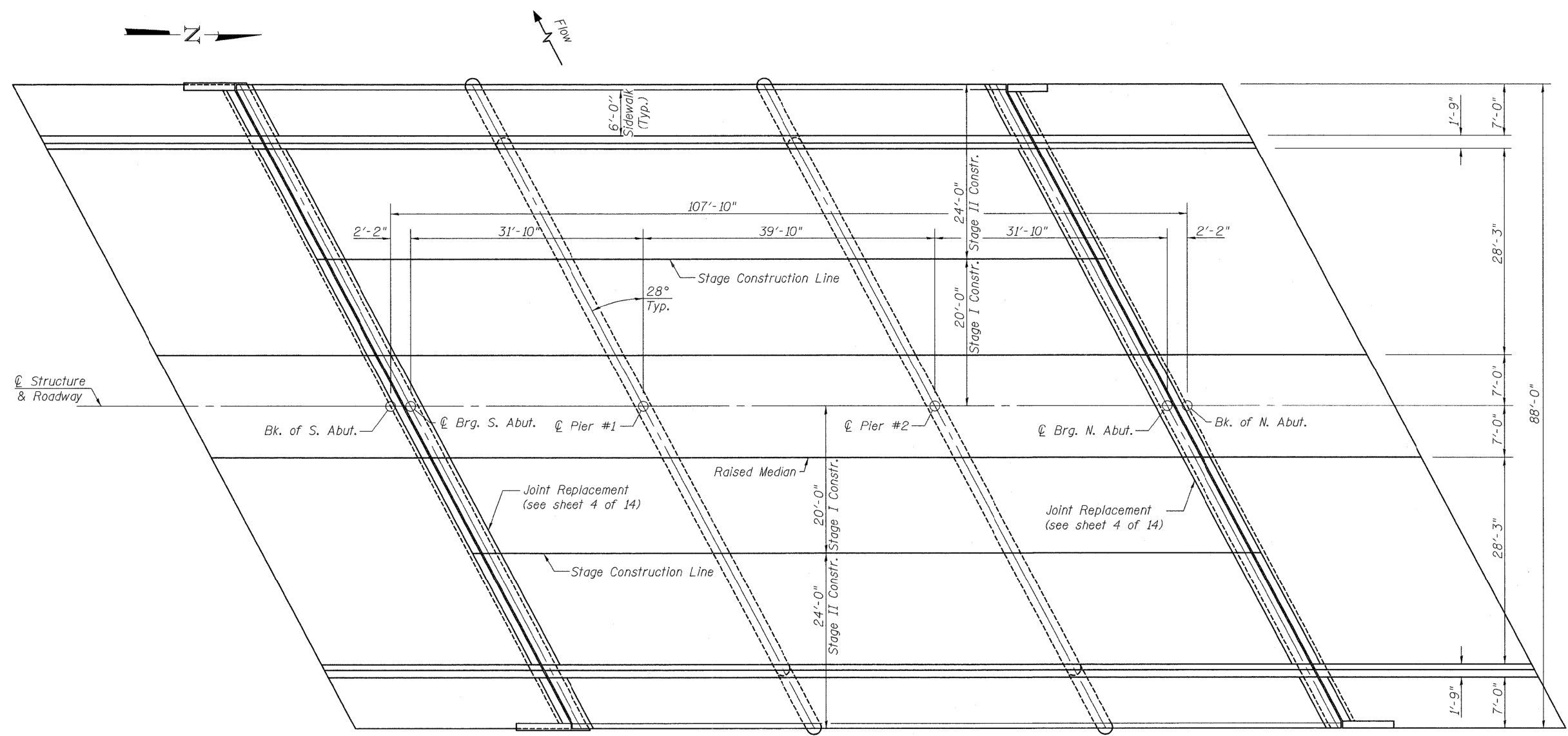
| | | | |
|---|------------------------------|------------|-----------|
| FILE NAME = | USER NAME = riosfj | DESIGNED - | REVISED - |
| et:\pw\work\pmdot\riosfj\d0319439\0108613\shht-plan.dgn | | DRAWN - | REVISED - |
| \$MODELNAME\$ | PLOT SCALE = 100.0000' / in. | CHECKED - | REVISED - |
| | PLOT DATE = 11/9/2012 | DATE - | REVISED - |

STATE OF ILLINOIS
DEPARTMENT OF TRANSPORTATION

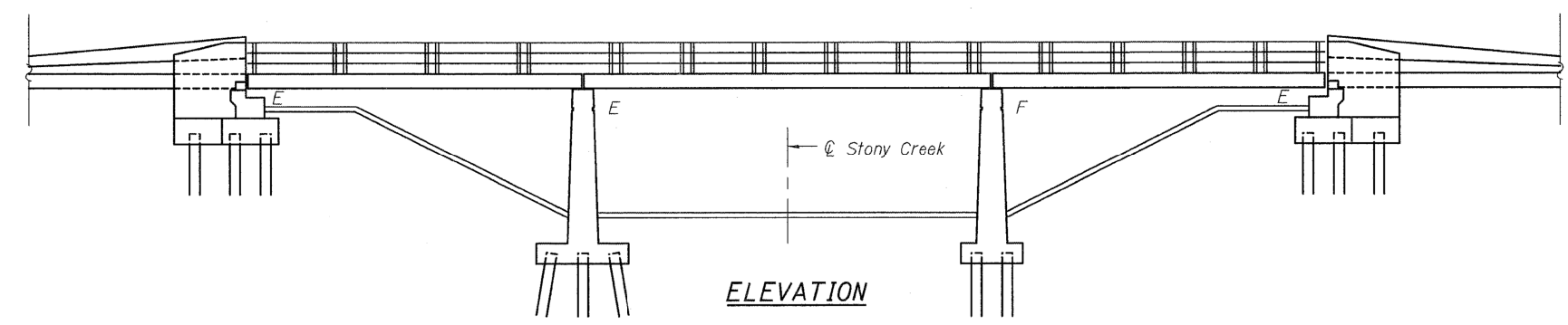
LOCATION 4 (SN 016-0919)

SCALE: SHEET 2 OF 2 SHEETS STA. TO STA.

| | | | | |
|-------------------------------|------------|--------|--------------|-----------|
| F.A. RTE. | SECTION | COUNTY | TOTAL SHEETS | SHEET NO. |
| VAR. | 2012-074BP | COOK | 27 | 21 |
| CONTRACT NO. 60V84 | | | | |
| ILLINOIS NON-FED. AID PROJECT | | | | |



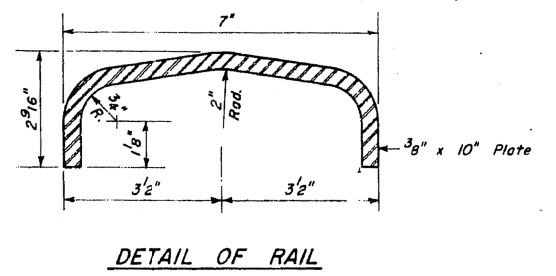
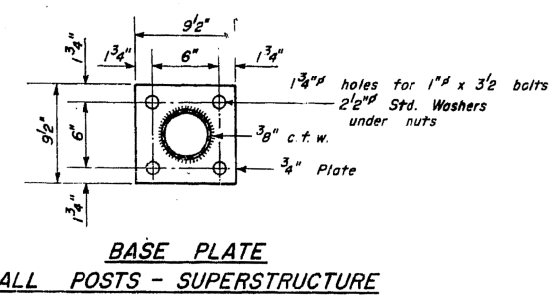
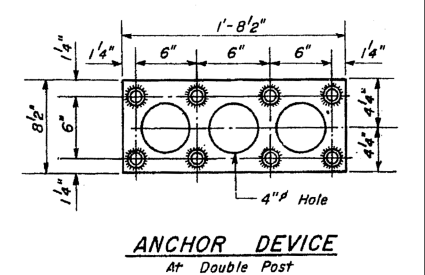
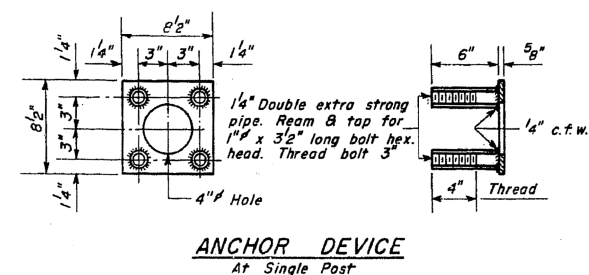
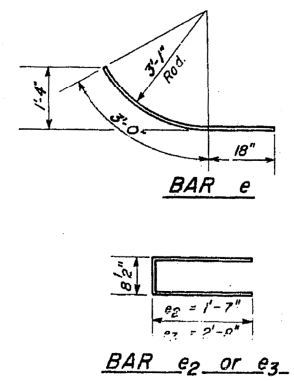
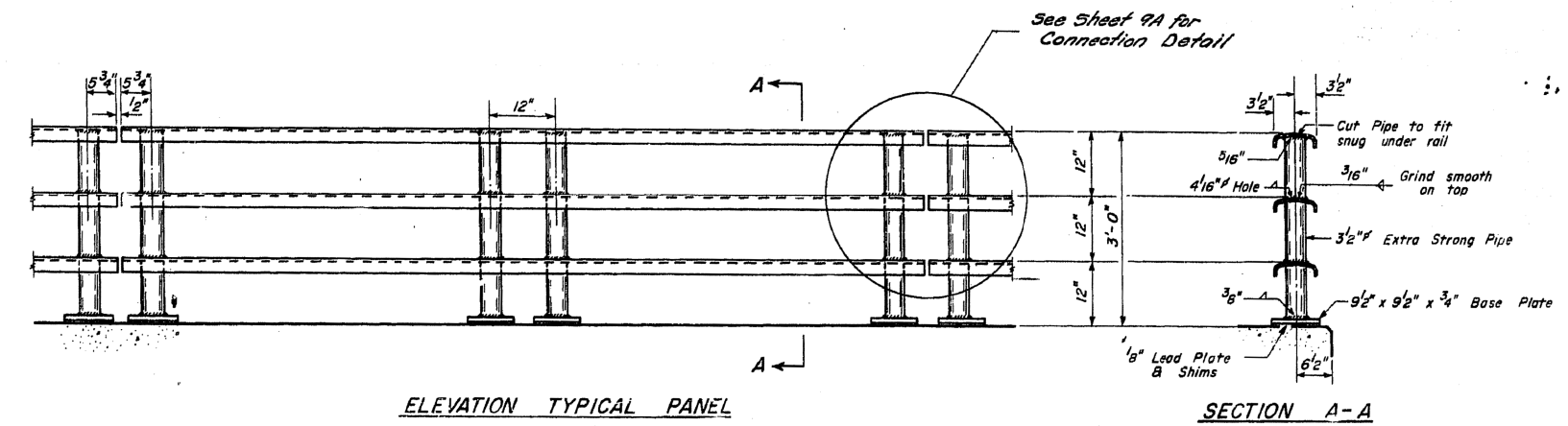
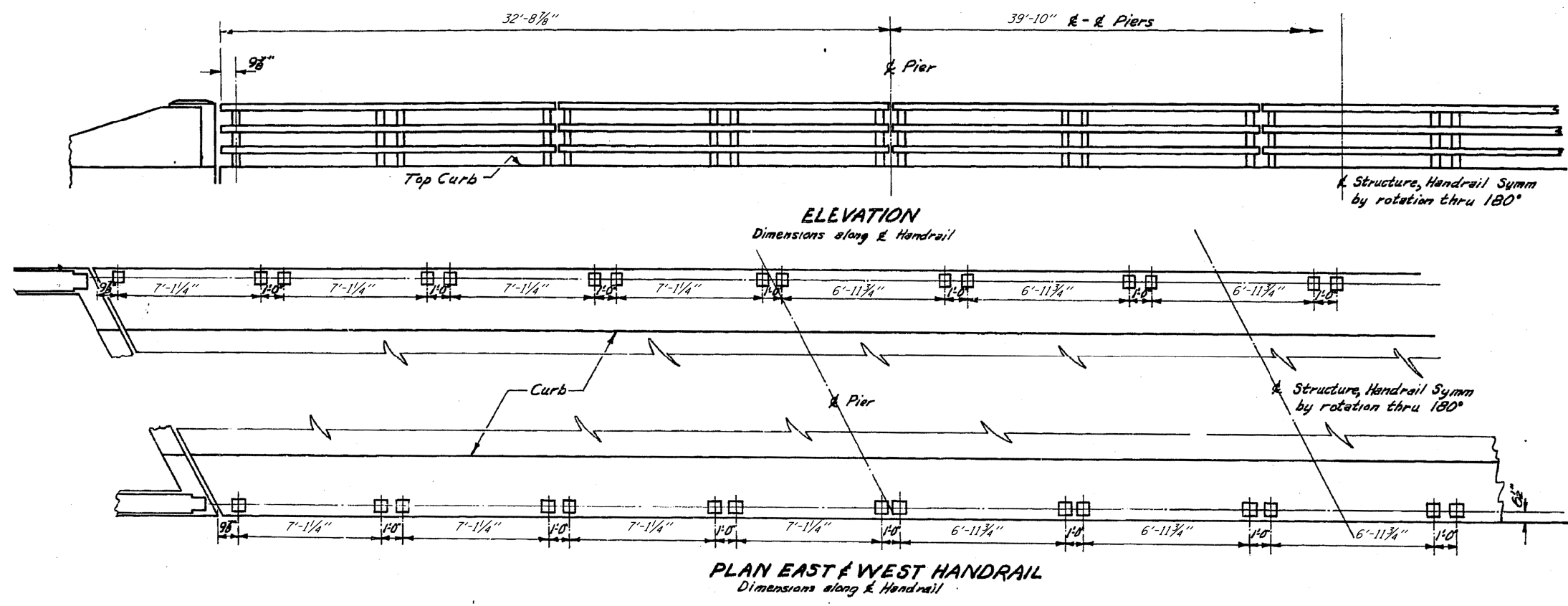
PLAN



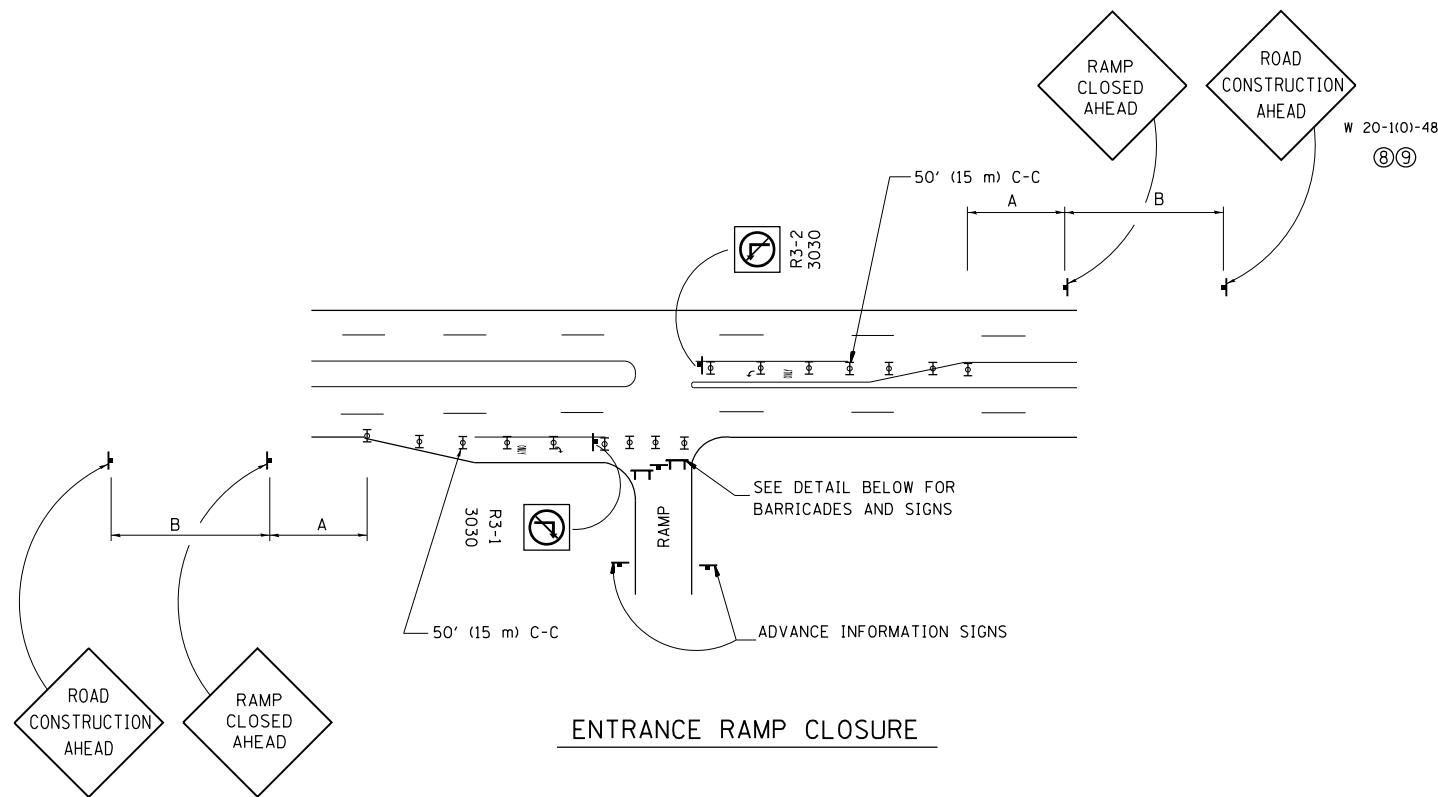
ELEVATION

FOR INFORMATION ONLY

| | | | | | | | | | | | | |
|--|------------------------------|------------|-----------|---|---|--|--|--------------------|---------|--------|--------------|-----------|
| FILE NAME = | USER NAME = r1osfj | DESIGNED - | REVISED - | STATE OF ILLINOIS DEPARTMENT OF TRANSPORTATION | LOCATION 5 (SN 016-0322) | | | F.A. RTE. | SECTION | COUNTY | TOTAL SHEETS | SHEET NO. |
| c:\pwwork\pwwork\rosfj\d0319439\0108613\sheet-plan.dgn | DRAWN - | REVISED - | VAR. | | | | | 2012-074BP | COOK | 27 | 22 | |
| *MODELNAME* | PLOT SCALE = 100.0000' / in. | CHECKED - | REVISED - | | SCALE: SHEET 1 OF 2 SHEETS STA. TO STA. | | | CONTRACT NO. 60V84 | | | | |
| | PLOT DATE = 11/9/2012 | DATE - | REVISED - | | ILLINOIS NON - FED. AID PROJECT | | | | | | | |



| | | | | | | | | | | | | |
|--|------------------------------|------------|-----------|---|---------------------------------|---------|-------------|---------------------------------|------------|--------|--------------|-----------|
| FILE NAME = | USER NAME = riosfj | DESIGNED - | REVISED - | STATE OF ILLINOIS DEPARTMENT OF TRANSPORTATION | LOCATION 5 (SN 016-0322) | | | F.A. RTE. | SECTION | COUNTY | TOTAL SHEETS | SHEET NO. |
| ce:\pwwork\pwwork\riosfj\d0319439\0108613\sheet-plan.dgn | PLOT SCALE = 100.0000' / in. | DRAWN - | REVISED - | | | | | VAR. | 2012-074BP | COOK | 27 | 23 |
| \$MODELNAME\$ | PLOT DATE = 11/9/2012 | CHECKED - | REVISED - | | CONTRACT NO. 60V84 | | | ILLINOIS NON - FED. AID PROJECT | | | | |
| | | DATE - | REVISED - | | SCALE: | SHEET 2 | OF 2 SHEETS | STA. | TO STA. | | | |



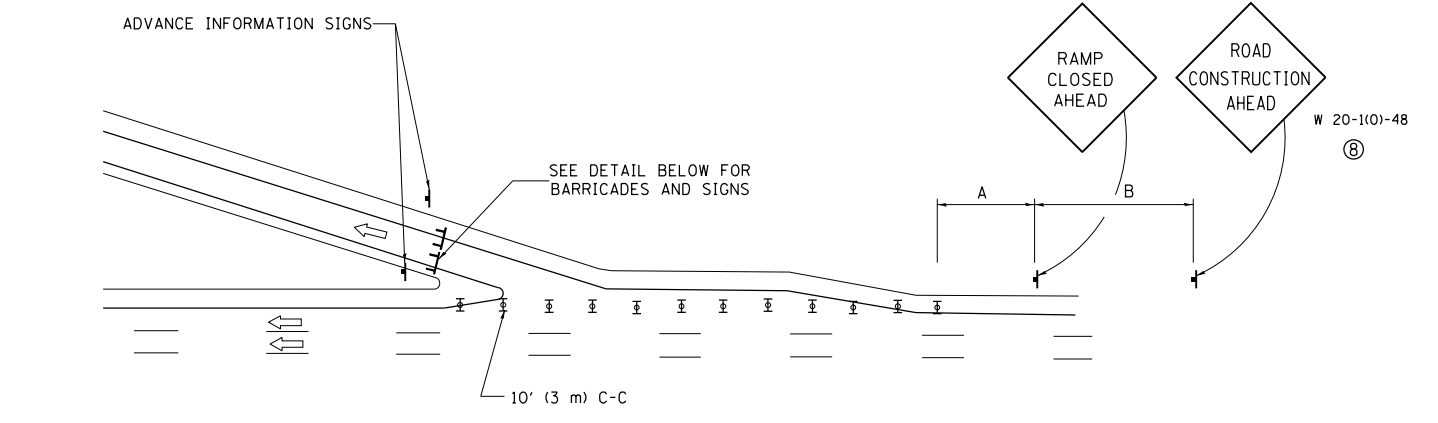
ENTRANCE RAMP CLOSURE

SIGN SPACING TABLE

| FACILITY | DISTANCE BETWEEN SIGNS | |
|----------------------|------------------------|---------------|
| | A | B |
| EXPRESSWAY >24 HOURS | 1000' (300 m) | 1500' (450 m) |
| EXPRESSWAY <24 HOURS | 500' (150 m) | 500' (150 m) |
| ARTERIAL ≥45 MPH | 350' (100 m) | 350' (100 m) |
| ARTERIAL <45 MPH | 150' (45 m) | 150' (45 m) |

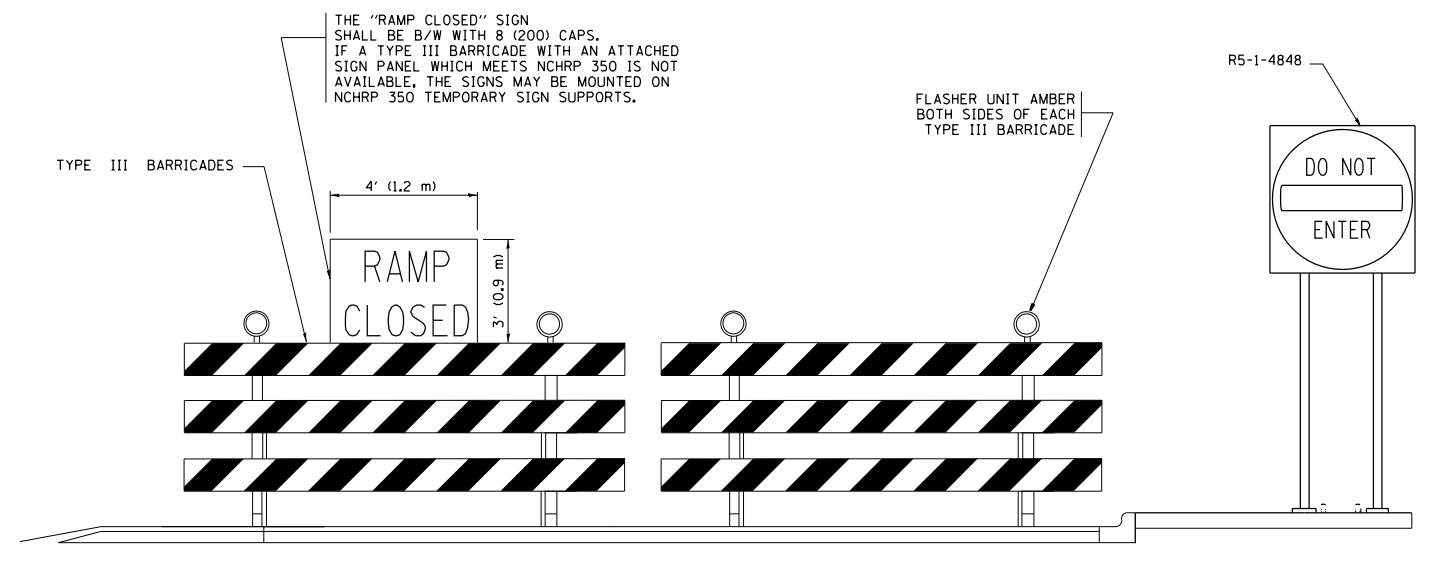
DISTANCES MAY BE SHORTENED DEPENDING UPON THE PROXIMITY OF ADJACENT RAMPS OR INTERSECTIONS.

W 20-1(0)-48
⑧⑨

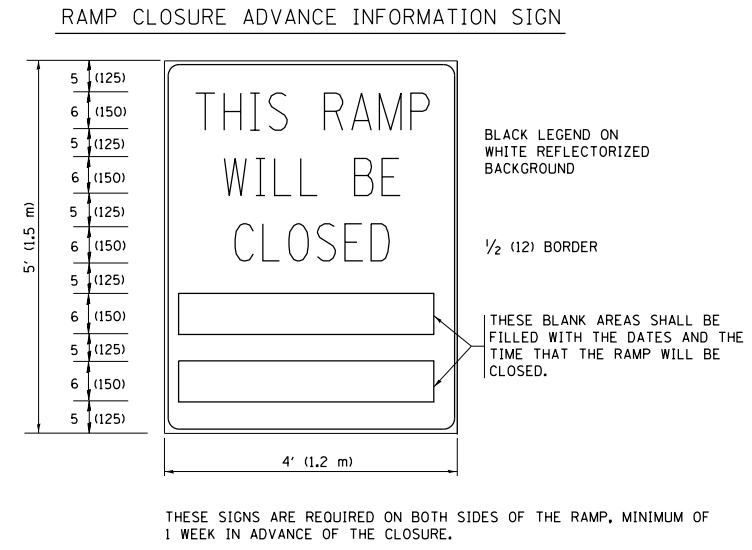
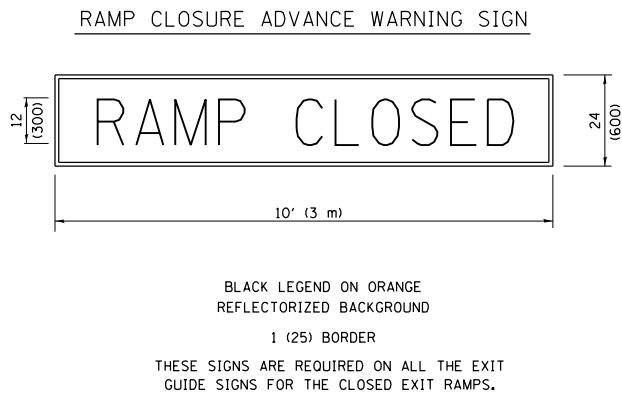


EXIT RAMP CLOSURE

- SYMBOLS**
- ⊥ TYPE II BARRICADE, DRUM OR VERTICAL BARRICADE WITH STEADY BURN MONO-DIRECTIONAL LIGHT
 - ⊓ TYPE III BARRICADE WITH FLASHING LIGHT



DETAIL FOR REQUIRED BARRICADES & SIGNS



GENERAL NOTES:

- ① CONES MAY BE SUBSTITUTED FOR DRUMS OR TYPE II BARRICADES DURING DAY OPERATIONS. CONES SHALL BE A MINIMUM OF 28 (700) HIGH.
- ② STEADY BURN LIGHTS WILL NOT BE REQUIRED FOR DAY OPERATIONS.
- ③ A FLAGGER SHALL BE POSITIONED AT EACH CLOSED RAMP THAT IS OPEN TO CONSTRUCTION VEHICLES.
- ④ ALL ROUTE MARKERS AND TRAILBLAZER ASSEMBLIES WHICH DIRECT MOTORISTS TO A CLOSED ENTRANCE RAMP SHALL BE COVERED.
- ⑤ THE SIGNING AND BARRICADING WHICH IS REQUIRED BY THIS DETAIL SHALL BE INCLUDED IN THE COST OF TRAFFIC CONTROL AND PROTECTION (EXPRESSWAYS).
- ⑥ AUTHORIZATION FROM THE DISTRICT'S BUREAU OF TRAFFIC IS REQUIRED FOR ALL RAMP CLOSURES.
- ⑦ THE RAMP CLOSURE ADVANCE INFORMATION SIGNS SHALL BE ERECTED IF THE CLOSURE TIME EXCEEDS TWENTY-FOUR (24) HOURS. ADDITIONAL ADVANCE WARNING SIGNS ON EXIT GUIDE SIGNING WILL BE REQUIRED FOR EXIT RAMP CLOSURES THAT EXCEED TWENTY-FOUR (24) HOURS IN LENGTH.
- ⑧ ROAD CONSTRUCTION AHEAD SIGNS MAY BE OMITTED WHEN THIS DETAIL IS USED IN CONJUNCTION WITH OTHER TRAFFIC CONTROL THAT ALREADY INCLUDES A ROAD CONSTRUCTION AHEAD SIGN.
- ⑨ ARTERIAL ROAD CONSTRUCTION AHEAD SIGNS MAY BE OMITTED ON CLOSURES LESS THAN 24 HOURS IN DURATION.

ALL DIMENSIONS ARE IN INCHES (MILLIMETERS) UNLESS OTHERWISE SHOWN.

| | | | |
|--|-----------------------------|----------------|-------------------------|
| FILE NAME = | USER NAME = r1osfj | DESIGNED - DWS | REVISED - DWS/JAF 12-02 |
| et:\pw\work\p1dot\rosfj\d0319439\DistStd.dgn | | DRAWN - | REVISED - JAF 02-06 |
| | PLOT SCALE = 100.0000' / 1" | CHECKED - | REVISED - SPB 01-07 |
| | PLOT DATE = 11/9/2012 | DATE - 02-83 | REVISED - SPB 12-09 |

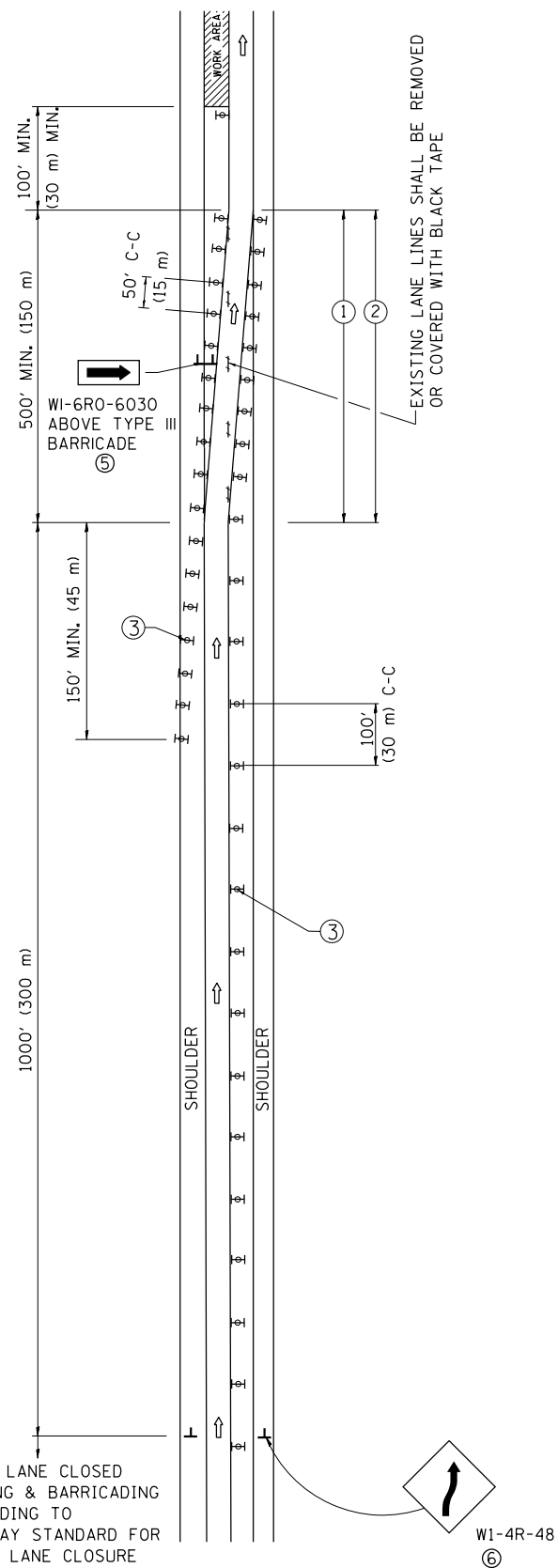
**STATE OF ILLINOIS
DEPARTMENT OF TRANSPORTATION**

**FREEWAY ENTRANCE AND EXIT RAMP
CLOSURE DETAILS**

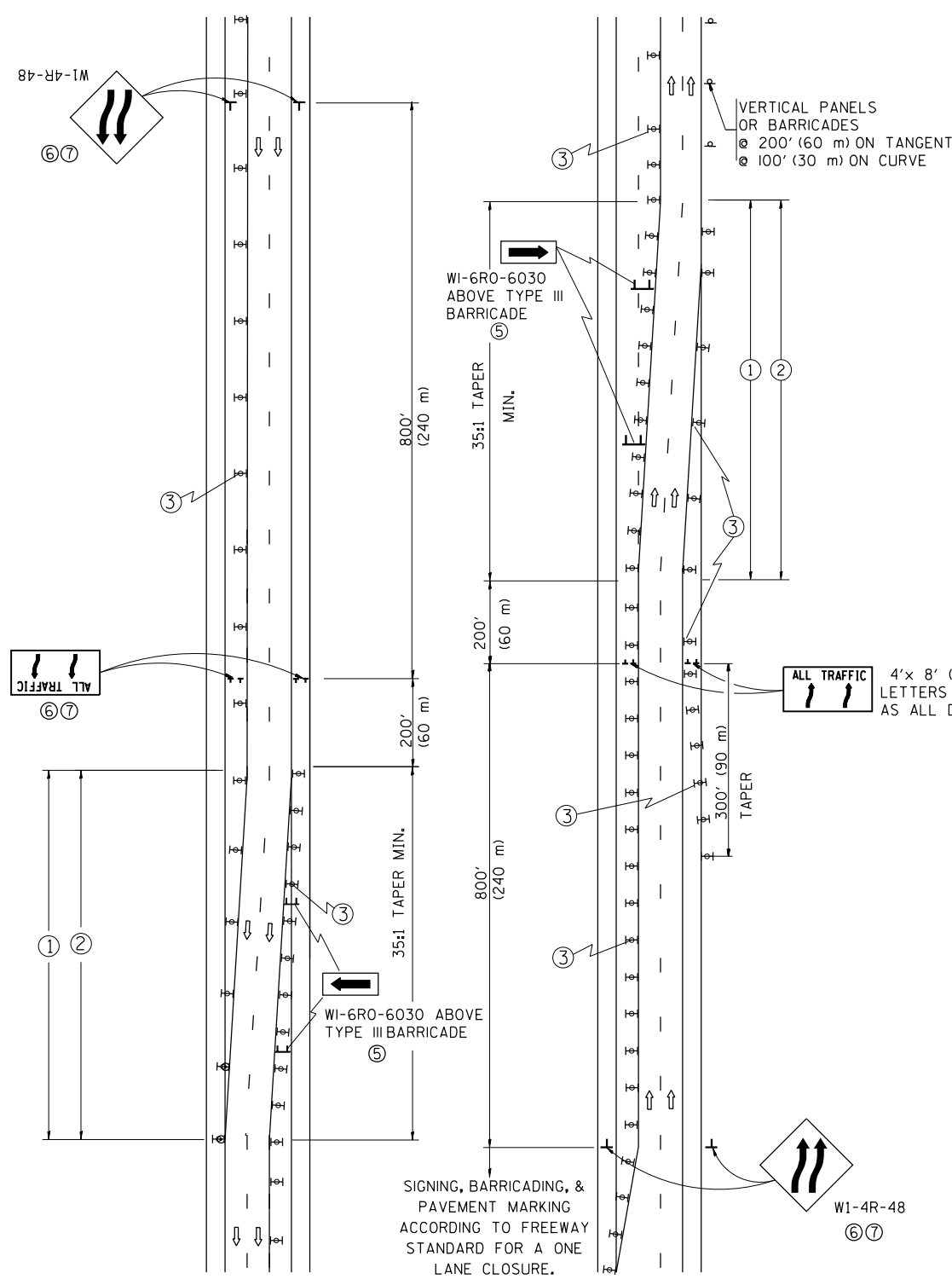
SCALE: NONE SHEET NO. 1 OF 1 SHEETS STA. TO STA.

| | | | | |
|---|------------|--------------------|--------------|-----------|
| F.A. RTE. | SECTION | COUNTY | TOTAL SHEETS | SHEET NO. |
| VAR. | 2012-074BP | COOK | 27 | 24 |
| TC-08 | | CONTRACT NO. 60V84 | | |
| FED. ROAD DIST. NO. 1 ILLINOIS / NON FED. AID PROJECT | | | | |

SINGLE LANE WEAVE



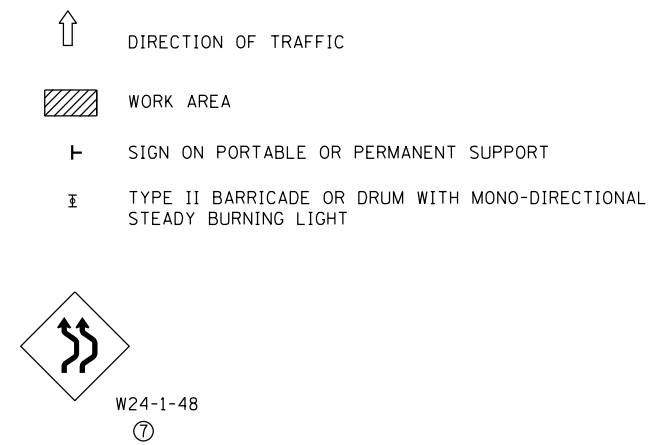
MULTI-LANE WEAVE



GENERAL NOTES

- ① EXISTING CONFLICTING PAVEMENT MARKING LINES SHALL BE REMOVED. PAVEMENT MARKING REMOVAL SHALL NOT BE REQUIRED FOR SINGLE LANE WEAVES UNDER 24 HOURS IN DURATION.
- ② CONTINUOUS REFLECTIVE TEMPORARY PAVEMENT MARKING TAPE SHALL BE PLACED THROUGHOUT THE TAPER AND FOR 300' (90 m) ALONG SIDE THE WORK AREA WHERE THE CLOSURE TIME IS GREATER THAN FOURTEEN DAYS. THE LEFT EDGE LINE SHALL BE YELLOW AND THE RIGHT EDGE LINE SHALL BE WHITE. FOR MULTI-LANE WEAVES LANE LINES SHALL BE 5 INCH, 10'-30' (3 m-9 m) SKIP DASH, WHITE.
- ③ PLASTIC DRUMS WITH STEADY BURN LIGHTS AT 50' (15 m) C-C SPACING IN TAPERS AND 100' (30 m) C-C SPACING IN TANGENTS.
- ④ ALL SIGNS SHALL BE POST MOUNTED IF THE CLOSURE TIME EXCEEDS FOUR DAYS.
- ⑤ IF A TYPE III BARRICADE WITH AN ATTACHED SIGN PANEL WHICH MEETS NCHRP 350 IS NOT AVAILABLE, THE SIGNS MAY BE MOUNTED ON NCHRP 350 TEMPORARY SIGN SUPPORTS. TYPE III BARRICADES MAY BE OMITTED FOR SINGLE-LANE WEAVES UNDER 24-HOURS IN DURATION. W1-6 SIGNS WILL STILL BE REQUIRED. IF THE WIDTH OF OFFSET IS LESS THAN 6' THEN THE TYPE III BARRICADE WITH ATTACHED ARROW SIGN PANEL CAN BE ELIMINATED IN THE TAPER AREAS.
- ⑥ WHEN THE LENGTH OF THE SHIFTED SEGMENT (DISTANCE BETWEEN WEAVE POINTS) IS LESS THAN 1500', DOUBLE REVERSE CURVE SIGNS (W24-1) SHOULD BE USED INSTEAD OF THE REVERSE CURVE (W1-4) SIGNS. ARROWS ON THE 4'X8' "ALL TRAFFIC" SIGNS SHALL BE THE SAME SHAPE.
- ⑦ THE NUMBER OF ARROWS ON THESE SIGNS SHALL MATCH THE NUMBER OF LANES OPEN TO TRAFFIC.

SYMBOLS

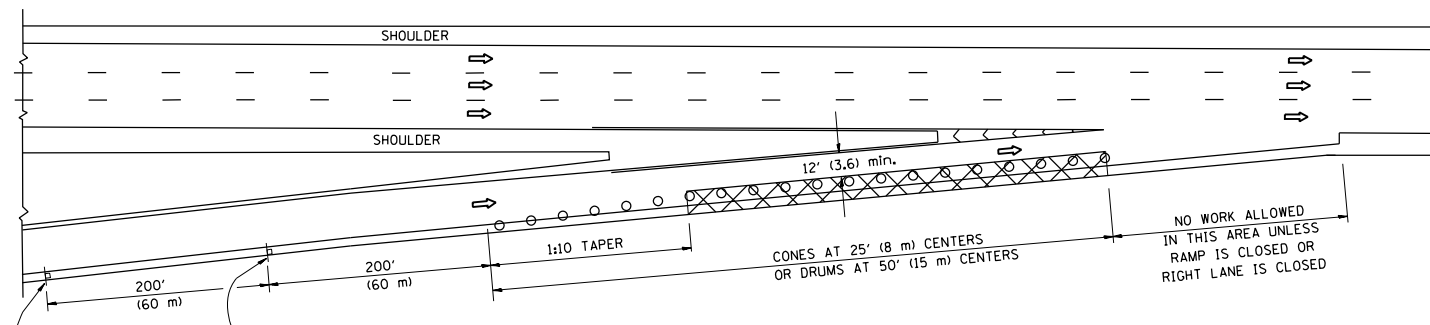


ALL DIMENSIONS ARE IN INCHES (MILLIMETERS) UNLESS OTHERWISE SHOWN

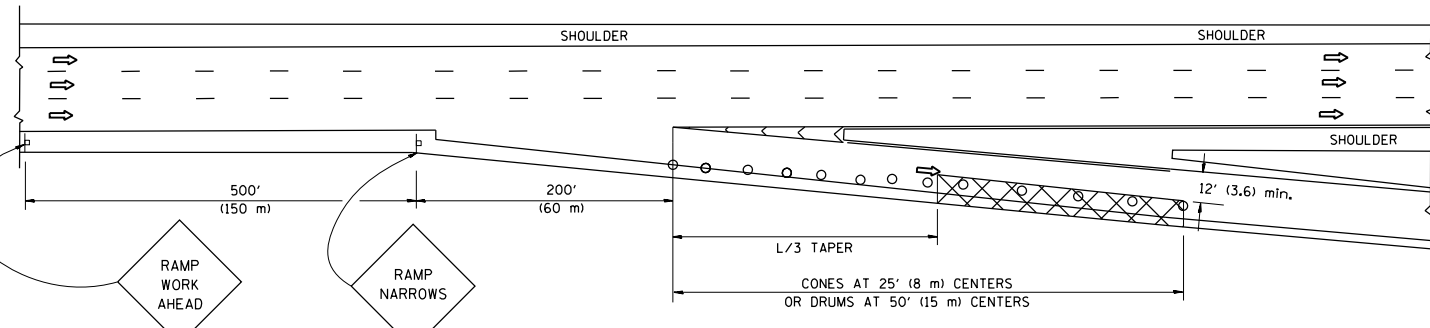
| | | | | | | | | | | | | |
|---|-------------------------------|----------------|---------------------|---|--|-------------------------|---------------------------|-----------|--------------------------------|----------------------|--------------|-----------|
| FILE NAME = | USER NAME = r10sfj | DESIGNED - DWS | REVISED - JAF 01-03 | STATE OF ILLINOIS DEPARTMENT OF TRANSPORTATION | TRAFFIC CONTROL DETAILS FOR FREEWAY SINGLE & MULTI-LANE WEAVE | | | F.A. RTE. | SECTION | COUNTY | TOTAL SHEETS | SHEET NO. |
| et:\pw\work\p1dot\r10sfj\d0319439\DistStd.dgn | | DRAWN - | REVISED - JAF 02-06 | | | | | VAR. | 2012-074BP | COOK | 27 | 25 |
| | PLOT SCALE = 100.0000' / 1in. | CHECKED - | REVISED - SPB 01-07 | | TC-09 | | CONTRACT NO. 60V84 | | | | | |
| | PLOT DATE = 11/9/2012 | DATE - 02-87 | REVISED - SPB 12-09 | | SCALE: NONE | SHEET NO. 1 OF 1 SHEETS | STA. | TO STA. | FED. ROAD DIST. NO. 1 ILLINOIS | NON FED. AID PROJECT | | |

PARTIAL RAMP CLOSURE DETAILS

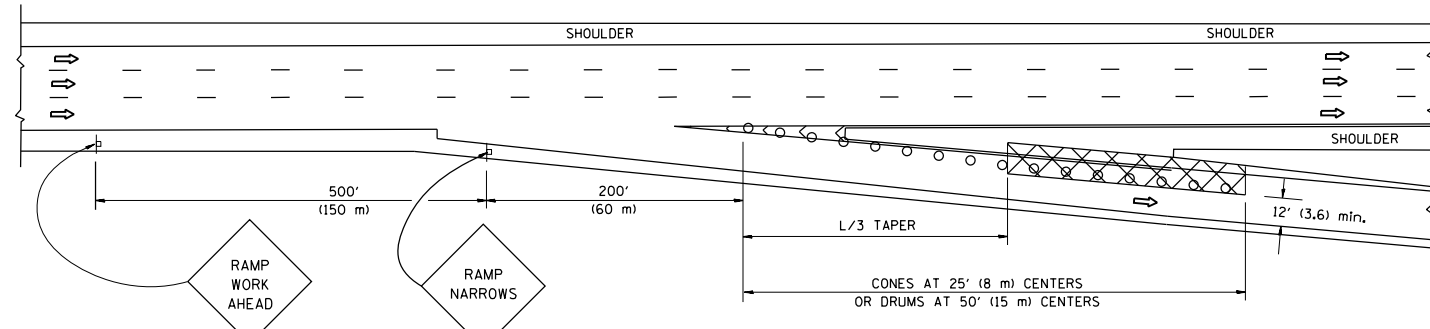
SHOULDER CLOSURE DETAILS



TYPICAL ENTRANCE RAMP



TYPICAL EXIT RAMP



TYPICAL EXIT RAMP

SYMBOLS

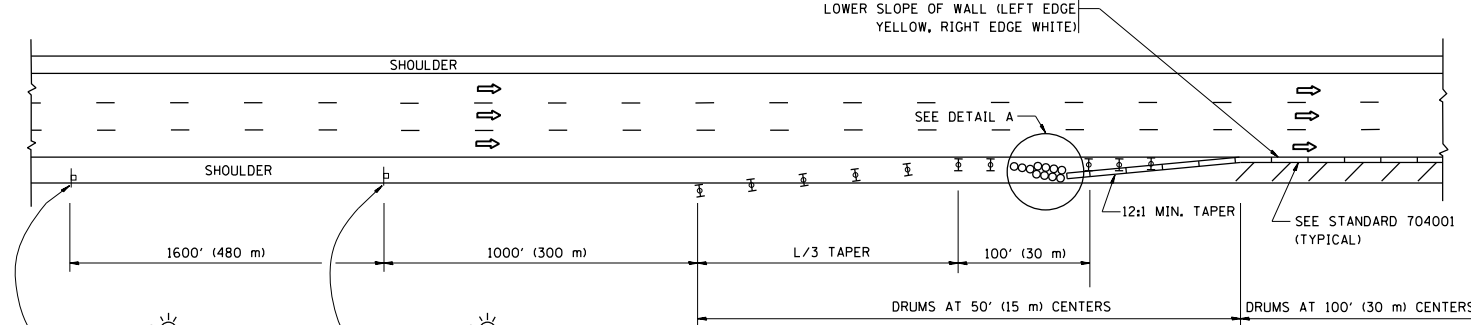
- ACTIVE WORK AREA
- SIGN ON PORTABLE OR PERMANENT SUPPORT
- FLAGGER WITH CONTROL SIGN
- TYPE II BARRICADE, DRUM OR VERTICAL BARRICADE WITH STEADY BURN MONO-DIRECTIONAL LIGHT
- CONE, DRUM OR BARRICADE

GENERAL NOTES

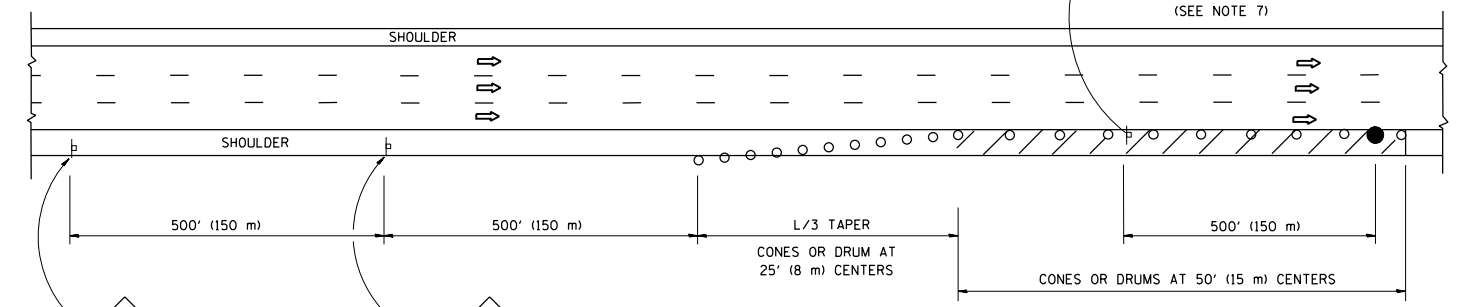
1. THE "L" DISTANCE EQUALS:

| | |
|---------------------------------|---------------------------|
| SPEED LIMIT | FORMULAS |
| 45 mph (80 km/h) OR GREATER: | METRIC ENGLISH |
| | $L=0.65(W)(S)$ $L=(W)(S)$ |

W = WIDTH OF OFFSET IN FEET (METERS)
S = NORMAL POSTED SPEED MPH (KM/H)
2. PLASTIC DRUMS WITH HIGH PERFORMANCE REFLECTIVE SHEETING AND STEADY BURNING LIGHTS ARE REQUIRED FOR ALL NIGHTTIME CLOSURES.
3. ALL SIGNS SHALL BE POST MOUNTED IF THE CLOSURE TIME EXCEEDS FOUR DAYS.
4. FLASHING LIGHTS SHALL BE USED DURING THE HOURS OF DARKNESS AND SHALL BE INSTALLED ABOVE THE FIRST TWO SETS OF SIGNS.

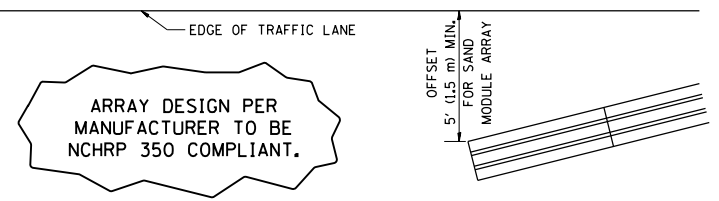


PERMANENT SHOULDER CLOSURE



DAYTIME SHOULDER CLOSURE

THIS DETAIL IS USED WHERE:
1. VEHICLES, EQUIPMENT, WORKERS OR THEIR ACTIVITIES ENCR OACH IN AN AREA CLOSER THAN 15' (4.5 m) TO THE EDGE OF PAVEMENT FOR A PERIOD IN EXCESS OF 15 MINUTES.



DETAIL "A"
IMPACT ATTENUATOR, TEMPORARY
(SEE NOTE 5)

5. THE IMPACT ATTENUATOR, TEMPORARY IS NOT REQUIRED WHEN THE TEMPORARY CONCRETE BARRIER WALL IS PROTECTED BY OR IS TIED INTO THE EXISTING GUARDRAIL. IF OFFSET IS LESS THAN 5 FEET USE NARROW USE TYPE DEVICE TO MEET NCHRP350.
6. AUTHORIZATION FROM THE DISTRICT'S BUREAU OF TRAFFIC IS REQUIRED FOR ALL FREEWAY CLOSURES.
7. THE FLAGGER AND FLAGGER SIGN ARE REQUIRED AT THE ABOVE WORK SITES WHEN:
 - a. FOUR OR MORE WORK VEHICLES ENTER THE TRAFFIC LANES IN A ONE HOUR PERIOD.
 - b. THE WORK AVTIVITY REQUIRES FREQUENT ENCR OACHMENT INTO THE LANE OPEN TO TRAFFIC.

THE FLAGGER SHALL BE STATIONED APPROXIMATELY 100' (30 m) TO 200' (60 m) IN ADVANCE OF THE WORKERS.

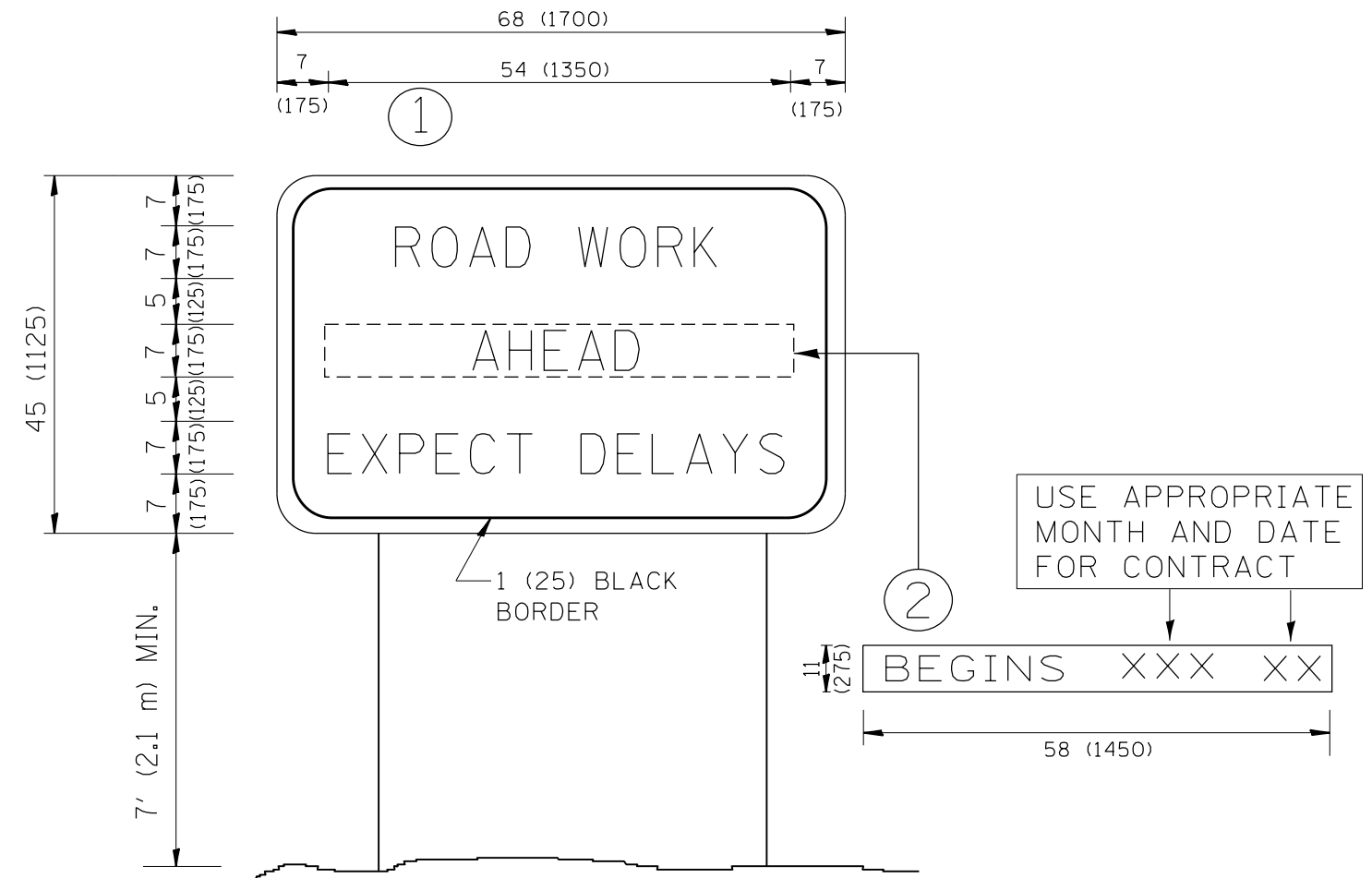
ALL DIMENSIONS ARE IN INCHES (MILLIMETERS) UNLESS OTHERWISE SHOWN.

| | | | |
|---|------------------------------|----------------|------------------------|
| FILE NAME = | USER NAME = r10sfj | DESIGNED - | REVISED - 04-03 |
| et:\pw\work\p10sfj\d0319439\DistStd.dgn | | DRAWN - D.W.S. | REVISED - J.A.F. 12-06 |
| | PLOT SCALE = 100.0000' / in. | CHECKED - | REVISED - S.P.B. 01-07 |
| | PLOT DATE = 11/9/2012 | DATE - 11-96 | REVISED - S.P.B. 12-09 |

STATE OF ILLINOIS
DEPARTMENT OF TRANSPORTATION

| TRAFFIC CONTROL DETAILS FOR FREEWAY | | | |
|---|-------------------------|------|---------|
| SHOULDER CLOSURES AND PARTIAL RAMP CLOSURES | | | |
| SCALE: NONE | SHEET NO. 1 OF 1 SHEETS | STA. | TO STA. |

| | | | | |
|---|------------|--------------------|--------------|-----------|
| F.A. RTE. | SECTION | COUNTY | TOTAL SHEETS | SHEET NO. |
| VAR. | 2012-074BP | COOK | 27 | 26 |
| TC-17 | | CONTRACT NO. 60V84 | | |
| FED. ROAD DIST. NO. 1 ILLINOIS NON FED. AID PROJECT | | | | |



NOTES:

1. USE BLACK LETTERING ON ORANGE BACKGROUND.
2. ERECT SIGNS IN ADVANCE OF THE LOCATION FOR THE "ROAD CONSTRUCTION AHEAD" SIGN AT LOCATIONS AS DIRECTED BY THE ENGINEER.
3. ERECT SIGN ① WITH INSTALLED PANEL ② ONE WEEK PRIOR TO THE START OF CONSTRUCTION.
4. REMOVE PANEL ② SOON AFTER THE START OF CONSTRUCTION.
5. SEE SPECIAL PROVISION FOR "TEMPORARY INFORMATION SIGNING" FOR ADDITIONAL INFORMATION.
6. ONE SIGN ASSEMBLY EQUALS 25.70 SQ. FT. (2.3 SQ. M.)
7. SHALL BE PAID FOR AS TEMPORARY INFORMATION SIGNING.

ALL DIMENSIONS ARE IN INCHES (MILLIMETERS) UNLESS OTHERWISE SHOWN.

| | | | | | | | | | | |
|--|------------------------------|----------------------------|---------------------------------|---|---|--------------|-------------------------|---------------------------|--------------|---|
| FILE NAME = | USER NAME = r1osfj | DESIGNED - | REVISED - R. MIRS 09-15-97 | STATE OF ILLINOIS DEPARTMENT OF TRANSPORTATION | ARTERIAL ROAD INFORMATION SIGN | F.A. RTE. | SECTION | COUNTY | TOTAL SHEETS | SHEET NO. |
| et:\pw\work\p1dot\rosfj\d0319439\DistStd.dgn | DRAWN - | REVISED - R. MIRS 12-11-97 | VAR. | | | 2012-074BP | COOK | 27 | 27 | |
| | PLOT SCALE = 100.0000' / in. | CHECKED - | REVISED - T. RAMMACHER 02-02-99 | | | TC-22 | | CONTRACT NO. 60V84 | | |
| | PLOT DATE = 11/9/2012 | DATE - | REVISED - C. JUCIUS 01-31-07 | | | SCALE: NONE | SHEET NO. 1 OF 1 SHEETS | STA. | TO STA. | FED. ROAD DIST. NO. 1 ILLINOIS NON FED. AID PROJECT |