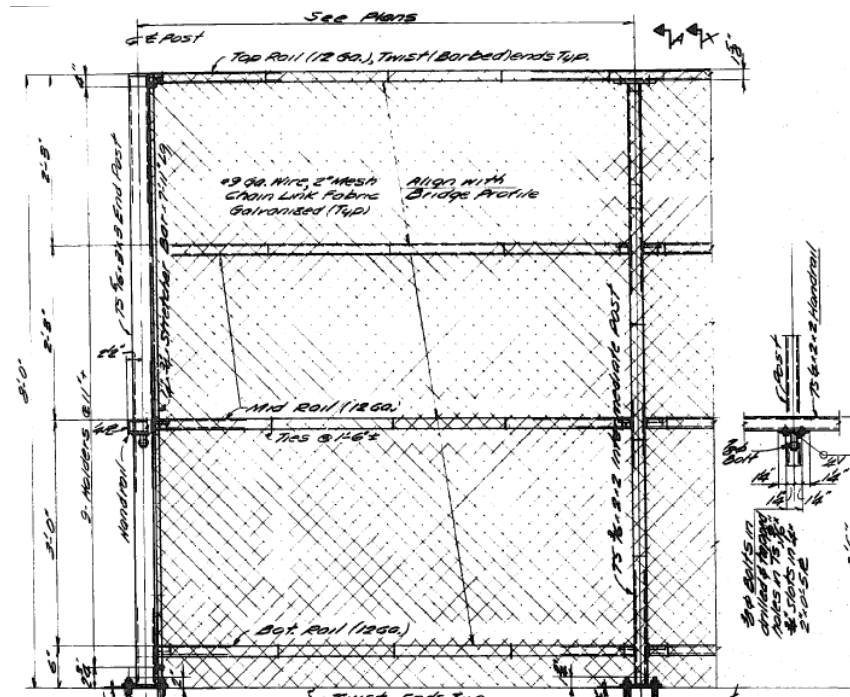
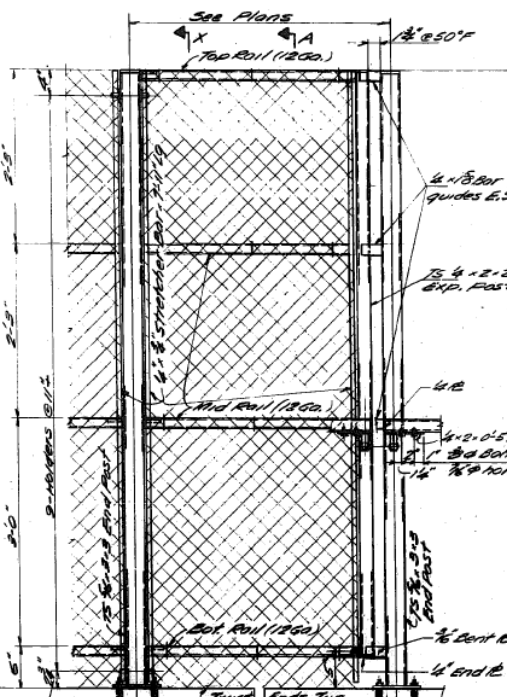


ROUTE	SECTION	COUNTY	TOTAL SHEETS	SHEET NUMBER
VARIOUS	2012-076BP	COOK	34	18

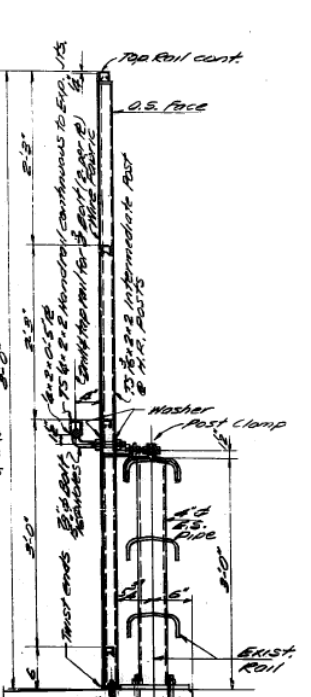
CONTRACT NO. 60V86



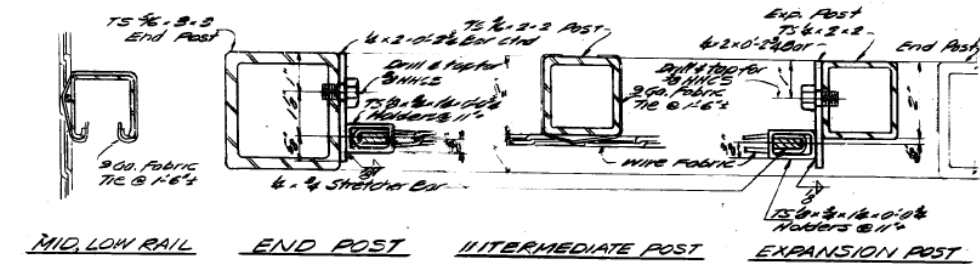
ELEVATION - TYPICAL



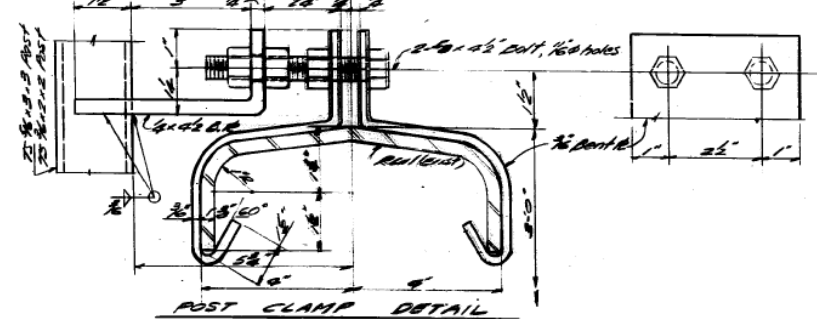
ELEVATION - EXPANSION



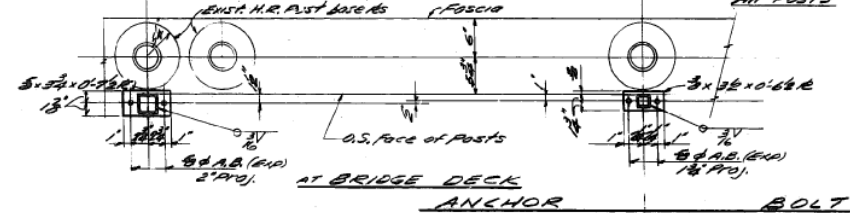
SECTION A-A AT BRIDGE DECK



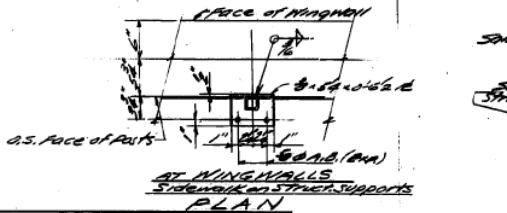
FASTENING OF WIRE FABRIC



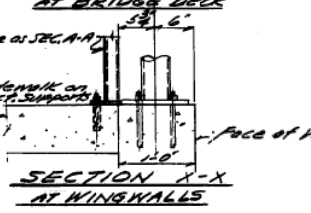
POST CLAMP DETAIL



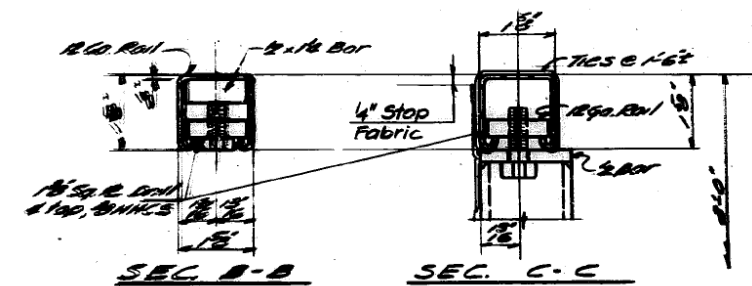
ANCHOR BOLT



PLAN AT WINGWALLS

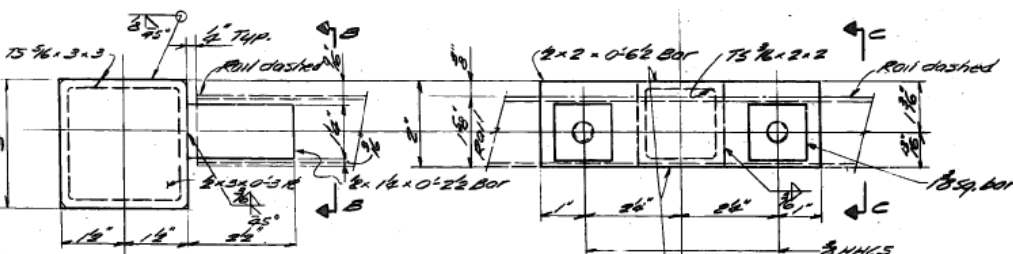


SECTION X-X AT WINGWALLS

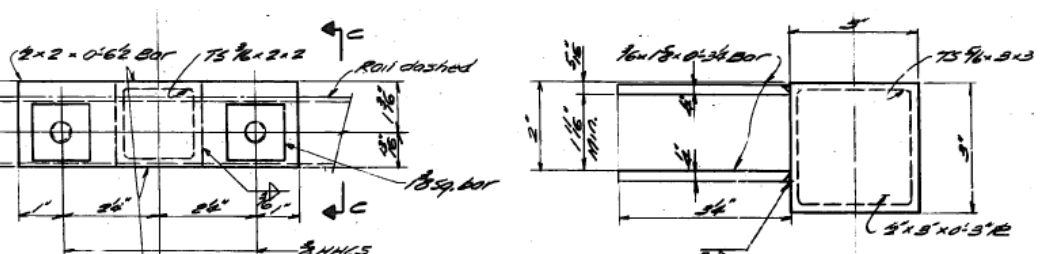


SEC. B-B

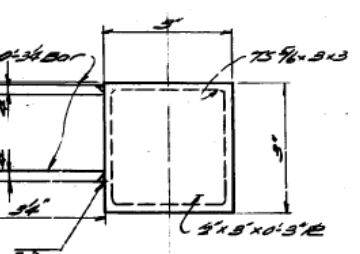
SEC. C-C



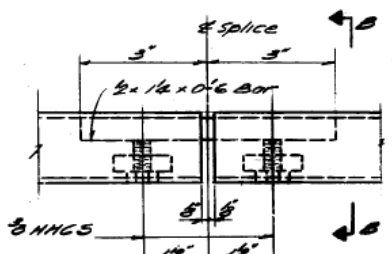
TOP RAIL END POST



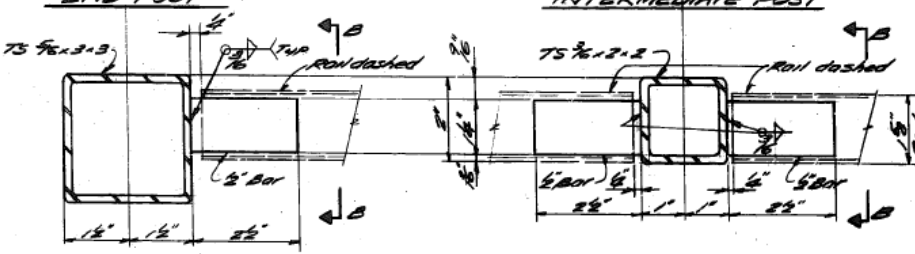
TOP RAIL INTERMEDIATE POST



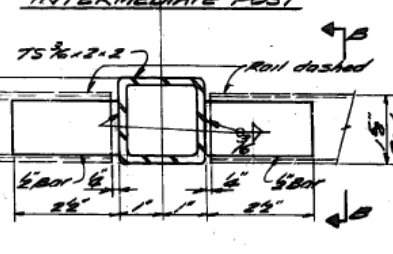
TOP RAIL TIP RAIL



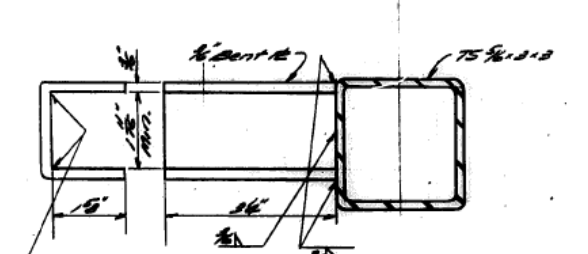
TOP RAIL SPLICE



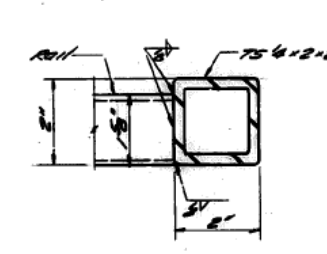
MID & BOT RAIL END POST



MID & BOT RAIL INTERMEDIATE POST



BOT RAIL EXPANSION POST



RAIL AT EXPANSION POST

ILLINOIS DEPARTMENT OF TRANSPORTATION
 EXISTING BRIDGE PLAN
 LOCATION 3
 SN 016-0610
 Elston Ave. over I-94 Eden's